



**Fairbanks
North
Star
Borough**

**Community Research Center
PO Box 71267
Fairbanks, Alaska 99707-1267
(907) 459-1000**

COMMUNITY RESEARCH QUARTERLY

A Socio - Economic Review



Fall 2011

Volume XXXIV, No. 3

COMMUNITY RESEARCH CENTER

The Community Research Center is located on the second floor
of the Borough Administration Building
at 809 Pioneer Road.

Office and Research Library hours are Monday through Friday
8:00 a.m. to Noon and 1:00 p.m. to 5:00 p.m.



CITATION

Tabular and summary information contained herein may be reproduced without special permission. It is requested that any information reproduced be cited as follows: Fairbanks North Star Borough, Community Research Center, *Community Research Quarterly*, Vol. XXXIV, No. 3, 2011

ACKNOWLEDGMENTS

The Community Research Center would like to thank the many persons, businesses, government agencies and organizations who contributed to this report. FNSB has established a policy of equal opportunity in employment, service, programs and activities.

COVER PAGE

Cover page photo "flying a kite" taken by Janet R. Davison, ed..

FAIRBANKS NORTH STAR BOROUGH
COMMUNITY RESEARCH QUARTERLY
A Review of Socio - Economic Trends

Volume XXXIV, Number 3
Fall 2011

BOROUGH MAYOR
Luke Hopkins

COMMUNITY PLANNING DEPARTMENT
Bernardo Hernandez, Director

COMMUNITY RESEARCH CENTER
Janet R. Davison, (ed.) Documentation Coordinator II

Fairbanks North Star Borough, Community Research Center
PO Box 71267, Fairbanks, Alaska 99707-1267
Phone: (907) 459-1212; e-mail: jdavison@fnsb.us
WEBSITE: <http://co.fairbanks.ak.us/CommunityPlanning/CRC>

Table of Contents


	<u>Page</u>
A Spotlight on Community Economic Trends	i-vi
	
Fairbanks Economy at a Glance	1-2
Economic Indicators	3-16
Bank Deposit & Loan Summary	3
Bankruptcies Filed	4
Notices of Default	5
Foreclosures	6
Fairbanks International Airport Freight	7
Fairbanks International Airport Transit Freight	8
Fairbanks International Airport Revenue Landings	9
Fairbanks International Airport Passengers	10
Alaska Highway Statewide Entering Passengers	11
Alaska Highway Statewide Exiting Passengers	11
Alaska Highway Statewide Net Annual Migration Trends	12
Alaska Highway Statewide Net Monthly Migration	12
Hotel / Motel Room Receipts	13
Quarterly Hotel / Motel Room Receipts	13
Annual Hotel / Motel Room Receipts	14
University of Alaska Museum Visitors	15
Morris Thompson Cultural and Visitor Center	15
Value of Agricultural Production, Tanana Valley	16
Employment	17-23
Civilian Labor Force Unemployment Rates	17-18
Average Monthly Employment Estimates by Sector	18
Average Monthly Employment Estimates by Industry	19
Annual Average Monthly Employment	20
Annual Average Monthly Employment by Industry	21
Annual Average Monthly Wage by Industry	22
Quarterly Census of Employment and Wages by Industry	23
Housing	24-29
Apartment/Multi-Plex Vacancy Rates	24
Rental Housing Units Available	25
Average Monthly Rents for Available Housing Units	26
Residential Housing Sales	27
Annual Average Residential Housing Sales	28
New Structures Annual Report	29

Table of Contents

	<u>Page</u>
Cost of Living	30-36
ACCRA Cost of Living Index	30-31
Consumer Price Index-U for All Items	31
Consumer Price Index-U (Anchorage)	32
Consumer Price Index-U for All Items (U.S. City Average)	32
Cost of Food at Home for a Week	33
Natural Gas Customers and Rates	34
Heating Oil Prices	35
Residential Heating Fuel Comparison	36
Comparison Pricer Per 100,000 BTU's of Useful Heat	36
Population & Social Conditions	37-44
Population Counts & Estimates	37
Military Population	38
Alaska Temporary Assistance Program (ATAP)	39
Adult Public Assistance	40
Food Stamps	41
General Relief	42
Registered Voters by Affiliation	43
Annual Registered Voters by Party Affiliation	44
US Census	45-49
Population Comparisons By Age, Sex, Tract & 60 years >	45-46
Population Trends: 1910-2010	47
Historical Population Trends for Interior, AK: 1880-1970	48
American Community Survey Map: Percentage of People in Poverty by State	49



NOTE FROM THE EDITOR:

If you have a change in your address information and wish to continue to receive the hard copy of the *Community Research Quarterly* please advise this office as soon as possible so the database can be altered before the next mailing. In an effort to conserve on postage costs, if your issue of the *Community Research Quarterly* is returned for any reason, we will not attempt to resend. Thank you for your cooperation.

A SPOTLIGHT
ON
COMMUNITY ECONOMIC TRENDS*

***SPOTLIGHT SOURCE:** Fairbanks economy stable, though challenges lie ahead. By Tim Bradner, *Alaska Journal of Commerce*, July 7, 2011, Tim Bradner can be reached at tim.bradner@alaskajournal.com.



Fairbanks economy stable, though challenges lie ahead

By Tim Bradner

Alaska Journal of Commerce

The Tanana Valley Farmers' Market offers locally grown produce and meats as well as hand-made crafts and art. *Photo/Angie Cerny/Courtesy of Fairbanks Convention and Visitors Bureau.*

FAIRBANKS — Life and the economy overall are steady in the Interior city. And that's a good thing in these uncertain times.

Jobs are stable, though retail is down a bit because of the overseas deployment of Fort Wainwright soldiers. North Slope work is also down for Fairbanks area-contractors and unions. Still, the twin pillars of the region's economy, the military and the University of Alaska, are stable.

The problem is energy. It is getting so expensive that it's increasingly tough for people to live in Fairbanks, local people say, despite the good employment situation.

"It is costing some people \$1,000 to \$1,500 a month to heat their homes in winter, and that's just unaffordable," said Jeff Cook, a longtime Fairbanks resident. Electricity rates are going up too, because power is generated mostly with fuel oil.

Still, Fairbanks has a lot to be thankful for

"We've been fortunate over the last two years because much of the effects of the national recession missed us," said Jerry Cleworth, mayor of the city of Fairbanks. "Half of our working people here are employed by government, which seems almost immune from recession. That gave us a buffer."

Employment data paints a picture of a steady economy. In April there were 38,700 wage and salary worker in the Fairbanks North Star Borough, according to information from the state Department of Labor and Workforce Development. That's actually up a bit from 38,200 employed during April 2010 and April 2009.

Deployment overseas of the U.S. Army's 1st Stryker Brigade Combat Team, 25th Infantry, from Fort Wainwright, is having a negative impact on retail sales in Fairbanks this year, but this is being offset by increases in tourism over last year and growth in health care and government jobs, according to the latest issue of the Boroughs' Community Research Quarterly.

Still, there are some serious issues facing Fairbanks over the next five to 10 years, Mayor Cleworth said.

Fuel price is the main worry, but a second concern is Fairbanks' non-attainment of air quality levels during winter, which will lead to sanctions and possible restrictions on federal permits for new projects by the U.S. Environmental Protection Agency unless a way is found to deal with it.

The Fairbanks North Star Borough is working on a plan for that and the broader energy dilemma as well, and the answer is natural gas, according to Fairbanks Borough Mayor Luke Hopkins.

Trucking of liquefied natural gas from the North Slope, which is now being studied by two local utilities, is the near-term solution, Hopkins said. Golden Valley Electric Association and Fairbanks Natural Gas Co. are working on the LNG trucking proposal. The gas company trucks LNG from Southcentral Alaska and regasifies it in Fairbanks for customers.

Another possibility is the natural gas discoveries in the Nenana Basin, an area west of the city where Doyon Ltd. is exploring, Cleworth said.

Hopkins and Cleworth said the energy dilemma is now affecting business expansion in Fairbanks. Fairbanks still depends mainly on fuel oil for space heating. Aside from the cost, that is not something that fits the business model of retailers looking to build in the Interior city, Hopkins said.

Those companies are concerned over the expense and potential liabilities of building underground fuel tanks for large new buildings, which may become stranded investment if natural gas becomes available sometime soon. Many standardized building designs that large retail firms use assume natural gas will be available, as is the case in the Lower 48.

Target, for example, has submitted building plans to the borough but has put the project on hold, Hopkins said.

Military might

Cleworth said the two military bases near the city, Fort Wainwright and Eielson Air Force Base, appear relatively secure for now. Fort Wainwright is a primary support base for rapid-deployment of Army forces and nearby land available for advanced training is a big plus for the installation.

The city mayor complimented the federal Environmental Protection Agency and U.S. Army Corps of Engineers for approving permits for a new \$180 million bridge across the Tanana River that will create year-round access to Army training area on the south side of the river.

The ample space available for air combat training helps anchor Eielson, where large international air training exercises have become annual events. Eielson also supports aerial refueling of Air Force planes over the Arctic and northern regions of North America.

However, the bases can't be taken for granted.

"If we continue with serious deficits at the federal level, the Department of Defense will take some budget hits," and Fort Wainwright and Eielson may share some of that pain, Cleworth said.

An important signal, however, is that the Defense Department continues to invest in infrastructure. Fort Wainwright recently upgraded its coal-fired power plants, and the Air Force is now making a substantial investment in upgrading capabilities and power generation at the Clear missile early warning radar station south of Fairbanks.

One thing to watch for is whether the Air Force moves ahead with plans to upgrade the Eielson AFB power plant, Cleworth said.

Tours galore

As for this year, the community's mayors are happy to see the upswing in tourism numbers. Visitor levels are still not back to where they were three years ago, but are a lot better than last year.

Some downtown merchants and restaurant owners are unhappy with a decision by major tour companies to not bus visitors downtown at mid-day — they are instead taking tourists to the Riverboat Discovery for lunch — but the tour companies say they try to take the sting out of this by allowing time for local shopping later in the day.

Fairbanks also has a spirited downtown merchants' association that is working to liven up the downtown core of the city with special events. A downtown Solstice festival packed in the people, locals and visitors, Cleworth said, and the next event coming is Fairbanks' annual Golden Days summer festival.

Winter festivals, mainly in the spring when harsh temperatures soften, add life to a normally slow time of year.

Fairbanks did well with winter tourism last spring, almost all of it driven by special events. The North Star Borough's hotel/motel bed tax collections, an indicator of tourism, were up 14 percent for January through March of this year. Revenues totaled \$6.2 million for the quarter, up from \$5.53 million for the same months of 2010.

Mining for jobs

The brightest new prospect for Fairbanks, however, is in mining. International Tower Hills, a mining company, is engaged in advanced exploration of a major gold prospect near Livengood, north of Fairbanks. It appears to be substantial, but the question is whether the gold can be extracted profitably.

The mining company hopes to have that answer later in the year. If it is developed, it would be a surface operation similar to Fort Knox, northwest of Fairbanks.

Fort Knox is a major employer and taxpayer in the borough, and a similar mine in Livengood would only add to regional employment.

Energy woes

These are positive developments, but Borough Mayor Hopkins returns to the energy dilemma as the central problem for Fairbanks. It relates not only to the cost of living and the cost of operating mines, like Fort Knox and proposed at Livengood, but also the air pollution issue.

If trucking LNG could work financially as a short-term solution, an aggressive program to bring natural gas to 13,000 Fairbanks-area homes could result in a 50 percent reduction in winter air pollution levels, enough to bring the community into federal compliance, Hopkins said. Doing this would take two summers and about \$46 million, the mayor estimated.

The "anchor" tenants of the LNG trucking project would be at North Pole, east of Fairbanks, where Golden Valley Electric Association's oil-fired power plant is located along with two refineries, the Flint Hills and PetroStar plants, that now burn oil to heat crude oil to make products. Lowering the energy costs of the refineries would help them remain viable and in operation, Hopkins said.

Given this, the North Pole community would likely see a build-out of a local gas distribution system with the LNG storage tanks and regasification equipment nearby. There would also be a gradual expansion of the existing distribution system in Fairbanks itself that is now operated by Fairbanks Natural Gas, Hopkins said.

Eventually natural gas will come to Fairbanks from the North Slope, but even an accelerated project to build a pipeline has gas delivered in eight or nine years. LNG trucking would be a short-term "bridge" to when North Slope gas would be available.

Meanwhile, Doyon Ltd. believes there could be undiscovered natural gas closer to Fairbanks than the North Slope. The Fairbanks-based Alaska Native regional corporation has high hopes for the Nenana Basin about 60 miles west of Fairbanks, even though an exploration well drilled recently had inconclusive results.

Doyon owns lands in the area but is also part of a consortium holding a state exploration license covering the basin, which also includes state and University of Alaska lands.

Jim Mery, Doyon's vice president for resources, said the corporation hopes to do seismic work in the northern part of the Nenana Basin this winter. The area is considered to be the most prospective part of the basin but is also remote, posing logistics challenges.

Doyon is also engaged in an evaluation of its own and village corporation lands near the Yukon River north of Fairbanks, an area also close to the Trans-Alaska Pipeline System and on the route of proposed natural gas pipelines from the North Slope. Geologists have long felt the large Interior Alaska sedimentary basins are prone to gas, but have also recently concluded that there is oil potential in some areas too, Mery said.

Seismic work has been done in the area, and Doyon is working to interest an oil and gas company in further investigation.

Tim Bradner can be reached at

tim.bradner@alaskajournal.com.

THIS PAGE INTENTIONALLY BLANK

ECONOMY AT-A-GLANCE

Fairbanks North Star Borough

Economic Indicator	Current Data Period	One Period Ago	One Year Ago
Reporting Period	3rd Qtr. '11	% Change from 2nd Qtr. '11	% Change from 3rd Qtr. '10
BANKING			
Total Bank Deposits (millions of \$)	\$966.3	4.0%	4.2%
Total Bank Loans (millions of \$)	\$636.1	-2.4%	-3.0%
BANKRUPTCIES			
Business	0	0.0%	0.0%
Non-Business	35	-5.4%	-7.9%
TRANSPORTATION			
Fairbanks International Airport			
Incoming Freight (thousands of lbs.)	2,197	17.9%	-5.3%
Outgoing Freight (thousands of lbs.)	9,900	17.7%	-7.1%
Transit Freight (thousands of lbs.)	967	-1.6%	-89.7%
Revenue Landings	7,663	22.0%	-0.1%
Incoming Passengers	150,827	21.8%	-0.3%
Outgoing Passengers	151,081	30.5%	-1.2%
Alaska Highway (statewide)			
Entering Passengers	50,928	29.9%	17.4%
Exiting Passengers	53,454	115.0%	12.7%
EMPLOYMENT			
Total Employment	39,100	-0.8%	-0.8%
Mining and Logging	1,300	8.3%	30.0%
Construction	3,200	18.5%	6.7%
Manufacturing	800	14.3%	33.3%
Trade/Transportation/Utilities.	8,400	6.3%	7.7%
Information	500	0.0%	0.0%
Financial Activities	1,500	0.0%	-6.3%
Professional & Business Services	2,900	16.0%	26.1%
Education & Health Services	5,000	0.0%	0.0%
Leisure & Hospitality	4,700	9.3%	2.2%
Other Services	1,200	0.0%	0.0%
Government	11,600	-2.5%	-1.7%

NOTE: Employment numbers rounded to nearest 100.

Fairbanks Economy at a Glance

(continued)
Fairbanks North Star Borough

Economic Indicator	Current Data Period	One Period Ago	One Year Ago
Reporting Period (annual/by qtr.)			
CONSTRUCTION	Annual		
New Structures Annual Report	481	0.0%	11.3%
Reporting Period (annual/by qtr.)	3rd Qtr. '11	2nd Qtr. '11	3rd Qtr. '10
REAL ESTATE			
Single Family Houses			
Number Sold	174	-17.5%	-32.0%
Average Price	\$215,141	-1.7%	-3.7%
RENTALS			
Residential Rentals			
Rental Units Advertised	751	22.9%	49.9%
Average Rent (2 bdrm. apartment)	\$1,073	-5.5%	-4.5%
MILITARY			
Military Active Duty Personnel	na	na	na
Military Dependents	na	na	na
POPULATION++			
FNSB (Census annual)*	97,581	0.0%	-1.1%
City of Fairbanks* (annual)	31,535	0.0%	-10.5%
City of North Pole* (annual)	2,117	0.0%	-4.9%
FNSB (DCCED annual)^	97,581	0.0%	-1.1%
FNSB (ADOL annual)**	97,581	0.0%	1.0%
City of Fairbanks** (annual)	31,535	0.0%	-2.5%
City of North Pole** (annual)	2,117	0.0%	-3.7%

SOURCE: (1) U.S. Census Bureau, Population Division, July 1st estimates. Table 1: Annual Estimates of the Resident Population for Counties in Alaska: April 1, 2000 to July 1, 2009, March 2010. Table 4: Annual Estimates of the Resident Population for Incorporated Places in Alaska: April 1, 2000 to July 1, 2009, September 2010. Reflecting Census 2000 and Census 2010 data. Census website: <http://www.census.gov>.

(2) Alaska Department of Labor and Workforce Development, Research and Analysis Section, and US Census Bureau. Reflecting (*) Preliminary Intercensal 2000-2009, and 2010 Census. Vintage 2010. All numbers are based on 2010 Census geography. ADOL website: <http://almis.labor.state.ak.us>.

(3) Alaska Department of Commerce, Community and Economic Development (DCCED), Division of Community and Regional Affairs, certified 2009 municipal population, June 1, 2010. DCCED Certified numbers may vary from ADOL population estimates as a result of the Population Estimate Appeal process available to incorporated communities on a yearly basis. Once certified, DCCED numbers may be applied for two consecutive calendar years. DCCED website: http://www.commerce.state.ak.us/dca/commdb/CF_COMDB.htm.state.ak.us.

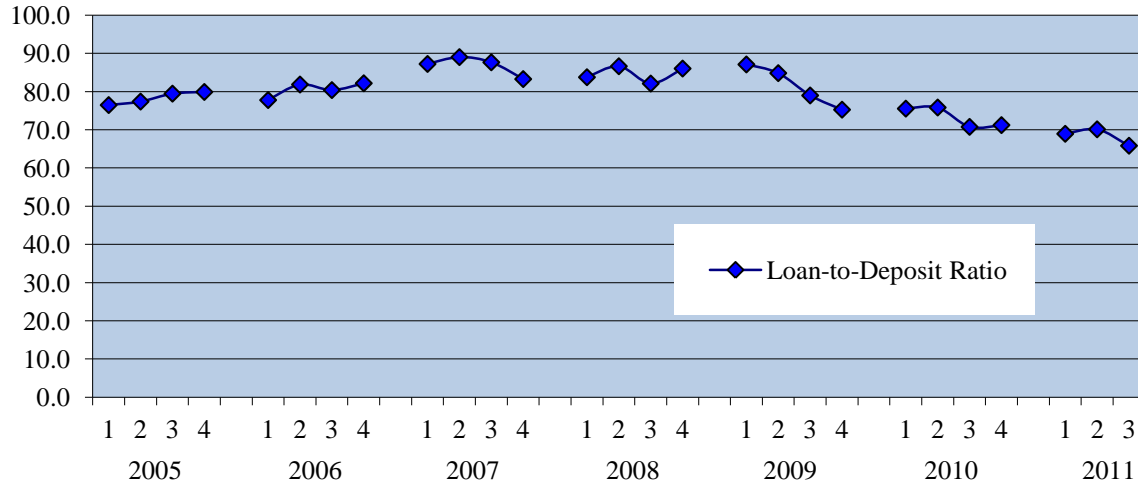
NOTE: The FNSB numbers include population for all communities within the Borough plus Fort Wainwright Army Base and Eielson Air Force Base.

** U.S. Census estimated numbers may be revised annually. Alaska Department of Labor and Workforce Development numbers are provisional.

ECONOMIC INDICATORS

BANK DEPOSIT & LOAN SUMMARY

Fairbanks North Star Borough
2005-2011, End of Quarter



BANK DEPOSIT & LOAN SUMMARY

Fairbanks North Star Borough
2004-2011

	2004	2005	2006	2007	2008*	2009	2010	2011
Deposits	-----Millions of Dollars-----							
March 31	\$695.5	\$657.9	\$698.4	\$699.9	\$751.1	\$786.9	\$873.8	\$938.3
June 30*	\$625.0	\$682.1	\$717.2	\$731.2	\$754.6	\$826.9	\$889.4	\$929.3
Sept. 30	\$642.4	\$700.9	\$747.3	\$752.7	\$807.4	\$847.0	\$927.1	\$966.3
Dec. 31	\$648.2	\$703.9	\$741.1	\$762.1	\$782.3	\$887.0	\$949.2	
Loans	-----Millions of Dollars-----							
March 31^	\$488.8	\$503.1	\$543.2	\$610.5	\$629.1	\$685.4	\$660.0	\$646.9
June 30*	\$478.1	\$527.8	\$587.0	\$650.9	\$653.7	\$701.4	\$674.4	\$651.6
Sept. 30	\$490.9	\$556.9	\$600.7	\$659.8	\$662.9	\$669.0	\$656.0	\$636.1
Dec. 31*	\$499.1	\$562.4	\$608.9	\$634.6	\$673.0	\$667.6	\$676.0	

SOURCE: Denali State Bank, (Interior City Branch) 1st National Bank of Anchorage, Mt. McKinley Bank, Northrim Bank included in survey March 31, 1997, Key Bank of Alaska 1991 through June 30, 1997, Wells Fargo Bank Alaska, N.A. purchased and replaced National Bank of Alaska 2nd quarter 2001, personal communications 2004-2011.

NOTE: As of June 30, 2004, Wells Fargo Bank, N.A. will reflect the following 5 branches: Bentley Mall, College, Cushman, Gaffney and North Pole.

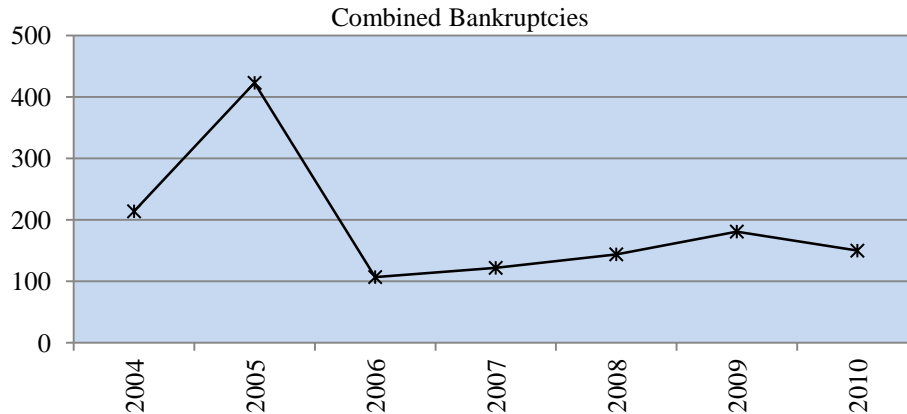
* Adjustment made to data entered March-June 2008 in October 2008.

^ Calculation adjusted loan value only, November 2007.

Economic Indicators

TOTAL BANKRUPTCIES FILED

Alaska Fourth Judicial District, Fairbanks Office
2004-2010



BANKRUPTCIES FILED

Alaska Fourth Judicial District, Fairbanks Office
2004-2011

	2004	2005	2006	2007	2008	2009	2010*	2011*
Nonbusiness								
1st Quarter	41	50	9	20	20	31	38	40
2nd Quarter	47	65	20	25	22	54	39	37
3rd Quarter	49	91	24	21	41	42	38	35
4th Quarter	65	161	37	32	40	48	33	
Total	202	367	90	98	123	175	148	
% Change from Previous Year	12%	82%	-75%	9%	26%	42%	-15%	-
Business								
1st Quarter	2	5	1	3	6	0	1	0
2nd Quarter	2	12	3	9	6	2	1	1
3rd Quarter	1	12	7	8	7	2	0	0
4th Quarter	7	27	6	4	2	2	0	
Total	12	56	17	24	21	6	2	
% Change from Previous Year	-33%	367%	-70%	41%	-13%	-71%	-67%	-
Combined Annual Total	214	423	107	122	144	181	150	0

SOURCE: U.S. Courts website: <http://www.akb.uscourts.gov>, and personal communications with FNSB Collections Department, 2010.

NOTE: S. 256, the Bankruptcy Abuse Prevention and Consumer Protection Act of 2005 (the "Act") provides, at Section 1501, a general effective date of 180 days from the date of enactment. Section 1501 further provides that the Act's amendments are applicable only to cases filed on or after the effective date. Attorneys anticipate a rush of clients in the months leading up to October 17, trying to file before the changes take effect. Those who do not make that deadline will face a longer, more difficult process, involving more paperwork and, possibly, less relief at the end. The Act is expected to discourage consumers from filing personal bankruptcies and for those who file, to be more expensive in terms of attorneys' fees as well as more being paid to creditors due to the means test.

Beginning in January 2009 the U.S. Bankruptcy Court changed the way they report bankruptcy cases. Due to staffing changes the information is no longer individually entered. They now use the nationwide formatting which does not sort business and non-business categories. FNSB will research the cases reported in effort to separate the two categories.

* Beginning First Quarter 2010 bankruptcy records reflect refined research documenting through FNSB Collections Department who utilizes PACER (Public Access To Court Electronic Records).

Economic Indicators

NOTICES OF DEFAULT

Fairbanks Recording District*

2005-2011 ^

	2005	2006	2007	2008	2009	2010	2011	% Change 2010-11
January	2	9	14	18	17	17	14	-18%
February	9	5	5	17	26	21	26	24%
March	6	17	8	8	19	10	21	110%
April	8	10	14	15	12	20	21	5%
May	10	8	18	15	14	18	13	-28%
June	7	14	12	18	10	22	15	-32%
July	11	11	6	19	29	20	13	-35%
August	6	7	10	11	20	16	25	56%
September	10	10	13	17	15	20	21	5%
October	4	3	8	24	12	13		
November [^]	5	13	10	13	13	8		
December [^]	14	6	6	20	15	9		
Total	92	113	124	195	202	194		

SOURCE: Alaska Department of Natural Resources website: <http://www.dnr.alaska.gov>, 2005-2011.

NOTE: Notices of default indicate mortgage delinquencies of at least 30 days. The notices need not result in foreclosures because deficiencies can be corrected. There can be multiple notices if a default is corrected but the mortgage falls behind again in the future. A single notice can be for more than one parcel. Notices are tabulated by date of initiation.

[^] Current data supersedes previous figures reported.

* Fairbanks Recording District includes (*bolded communities may reside in the FNSB*) **A.G.M.(Camp)**; **Alaska Lodge**; Alatna; **Alder Creek**; **Alder Creek Camp**; Alexanders Village; Allakaket; **Amy Creek**; Arctic City (Aband); **Aurora Lodge**; Barlett; **P.O. (Ester)**; Bear Paw; Bearman Cabin; Beaver; Beaver Cr. Yukon; Bend S.C.; Berry; Berry Camp; Bettles; Bettles Field (Evansville); Biedermans Camp; Big Delta; Big Horn; Big Lake; Birch Creek; Black Jack Cabin; Bonanza; Bonanza Bar; Boundary; Burnt Paw; **Cache**; Canyon Creek Camp; Canyon Vil; Caribou; Caribou Bar; Caro; Cathedral Bluffs; Cathedral Rapids; Central; Chalkyitsik; Chandalar; Chapman; **Chatanika**; **Chena**; **Chena Hot Springs**; Chicken; Chisana; Christian; Circle; Circle Hot Springs; **Cleary Summit**; Coal Creek; Cold Foot; **College**; Crooked Creek; Dahten; Dall; Dalton; Delta Junction; Demarcation Pt; Diamond; Dome; Dome Creek; Donnelly; Doran; Dot Lake; Eagle; Eagle Creek; Eagle Village; **Eielson Air Force Base**; **Ester (Bartlett; P.O.)**; Evansville (Bettles Field); **Fairbanks**; **Fairbanks Creek Camp**; **Fiftysix Mile Cabin**; Fish Camp; Fishhook; Flume Creek; Fort Greely; Fort Hamlin; **Fort Wainwright**; Fort Yukon; Forty-Mile R.H. (Tetlin Junction); Fortysix Mile Cabin; Fossil Cr. S.C.; **Fox**; Franklin; Glacier; Glacier (Mine); Gold Bench; **Goldstream**; **Graehl**; Healy Lake; Heinie Creek; Henshaw Cabin; Horsfeld; Jack Wade; Joe Ward Camp; John Herbert Village; Johnnie Frog Cabin; Johnson River; Joseph; Kantishna; Kochumstuk; **Lake Harding Store**; Lake Minchumina; Larson Cabin; Liberty; Lilywig Creek; Livengood; Log Cabin Inn; Mansfield Village; **Martin**; McCallum; Miller House; Millers Camp (Aband); Millers R.H.; Montana Creek Camp; **Moose Creek**; Mudbank Cabin; **Murphy Dome**; Muskeg; Myrtle Creek; Nabesna; Nabesna Village; Nation (Aband); Ninemile Cabin; Nineteen Mile; Nolan; **North Pole**; North Slope; Northway; Northway Junction; Old Camp; Old Rampart; **Old Saulich**; **Olnes**; Oscars Cabin; Poker Creek; Yukon Post & Scoby; Richardson; **Riverside**; **Roosevelt**; **Salcha**; **Salchakat**; Salmon; Salmon River; Sam Creek; **Saulich**; Scottie Creek; Seventeen mile; Shaw Creek Lodge; Shuman House; **Silver Fox R.H.**; Sixtymile (Glacier P.O.) Yukon; Sourdough Camp; **South Fork**; Standard; **Steele Creek**; Stephens (Stevens); Swede Boys Camp; Tanacross; Ten Mile; Tenderfoot; Tetlin; Tetlin Jct; Thirtysix Mile; Cabin Tok (Junction); Toklat; Tolovana; Tramway Bar; Tsukon Cabin; Twentyfour Mile Cabin; Twentytwo Mile Village; **Two Rivers**; United States Camp; Venetie; Venetie Landing; Wallen; **West Fork (Aband)**; White Eye; Wild Lake; Willow House; Wiseman; Woodchopper (Aband); Woodchopper Creek.

Economic Indicators

FORECLOSURES Fairbanks Recording District* 2005-2011 ^

	2005	2006	2007	2008	2009	2010	2011	% Change 2010-11
January	4	1	7	5	12	15	11	-27%
February	11	2	6	9	20	12	10	-17%
March	4	5	3	6	16	13	10	-23%
April	5	3	3	7	14	14	14	0%
May	2	5	6	10	12	13	7	-46%
June	7	9	3	10	13	10	15	50%
July	7	7	13	5	20	13	12	-8%
August	5	7	8	8	10	16	12	-25%
September	5	4	6	11	14	21	11	-48%
October	7	4	8	14	20	13		
November	10	3	3	4	15	10		
December	9	9	3	13	15	15		
Total	76	59	69	102	181	165		

SOURCE: Alaska Department of Natural Resources website: <http://www.dnr.alaska.gov>, 2005-2011.

NOTE: Foreclosures in this table indicate the loss of property by a borrower as a result of an Affidavit of Foreclosure, Deed in Lieu of Foreclosure, Relinquishment, Trustee Deed, or Judicial Deed of Foreclosure. More than a single parcel may be affected by the foreclosure. Foreclosures are tabulated by date of initiation.

^ Current data supersedes previous figures reported.

CORRECTION: 2004-2006 adjustments occurred and are reflected because Patents were collected/reflected in error, January 2007. Patents are not foreclosures but rather a transfer of property between governments or from a government to an individual.

* Fairbanks Recording District includes (*bolded communities may reside in the FNSB*) **A.G.M. (Camp)**; **Alaska Lodge**; Alatna; **Alder Creek**; **Alder Creek Camp**; Alexanders Village; Allakaket; **Amy Creek**; Arctic City (Aband); **Aurora Lodge**; Barlett; **P.O. (Ester)**; Bear Paw; Bearman Cabin; Beaver; Beaver Cr. Yukon; Bend S.C.; Berry; Berry Camp; Bettles; Bettles Field (Evansville); Biedermans Camp; Big Delta; Big Horn; Big Lake; Birch Creek; Black Jack Cabin; Bonanza; Bonanza Bar; Boundary; Burnt Paw; **Cache**; Canyon Creek Camp; Canyon Vil; Caribou; Caribou Bar; Caro; Cathedral Bluffs; Cathedral Rapids; Central; Chalkyitsik; Chandalar; Chapman; **Chatanika**; **Chena**; **Chena Hot Springs**; Chicken; Chisana; Christian; Circle; Circle Hot Springs; **Cleary Summit**; Coal Creek; Cold Foot; **College**; Crooked Creek; Dahten; Dall; Dalton; Delta Junction; Demarcation Pt; Diamond; Dome; Dome Creek; Donnelly; Doran; Dot Lake; Eagle; Eagle Creek; Eagle Village; **Eielson Air Force Base**; **Ester (Bartlett; P.O.)**; Evansville (Bettles Field); **Fairbanks**; **Fairbanks Creek Camp**; **Fiftysix Mile Cabin**; Fish Camp; Fishook; Flume Creek; Fort Greely; Fort Hamlin; **Fort Wainwright**; Fort Yukon; Forty-Mile R.H. (Tetlin Junction); Fortysix Mile Cabin; Fossil Cr. S.C.; **Fox**; Franklin; Glacier; Glacier (Mine); Gold Bench; **Goldstream**; **Graehl**; Healy Lake; Heinie Creek; Henshaw Cabin; Horsfeld ; Jack Wade; Joe Ward Camp; John Herbert Village; Johnnie Frog Cabin; Johnson River; Joseph; Kantishna; Kochumstuk; **Lake Harding Store**; Lake Minchumina; Larson Cabin; Liberty; Lilywig Creek; Livengood; Log Cabin Inn; Mansfield Village; **Martin**; McCallum; Miller House; Millers Camp (Aband); Millers R.H.; Montana Creek Camp; **Moose Creek**; Mudbank Cabin; **Murphy Dome**; Muskeg; Myrtle Creek; Nabesna; Nabesna Village; Nation (Aband); Ninemile Cabin; Nineteen Mile; Nolan; **North Pole**; North Slope; Northway; Northway Junction; Old Camp; Old Rampart; **Old Saulich**; **Olmes**; Oscars Cabin; Poker Creek; Yukon Post & Scoby; Richardson; **Riverside**; **Roosevelt**; **Salcha**; **Salchakat**; Salmon; Salmon River; Sam Creek; **Saulich**; Scottie Creek; Seventeen mile; Shaw Creek Lodge; Shuman House; **Silver Fox R.H.**; Sixtymile (Glacier P.O.) Yukon; Sourdough Camp; **South Fork**; Standard; **Steele Creek**; Stephens (Stevens); Swede Boys Camp; Tanacross; Ten Mile; Tenderfoot; Tetlin; Tetlin Jct; Thirtysix Mile; Cabin Tok (Junction); Toklat; Tolovana; Tramway Bar; Tsukon Cabin; Twentyfour Mile Cabin; Twentytwo Mile Village; **Two Rivers**; United States Camp; Venetie; Venetie Landing; Wallen; **West Fork (Aband)**; White Eye; Wild Lake; Willow House; Wiseman; Woodchopper (Aband); Woodchopper Creek.

Economic Indicators

FAIRBANKS INTERNATIONAL AIRPORT FREIGHT*^
2005-2011

	2005	2006	2007	2008	2009	2010	2011	% Change 2010-11
Incoming	----- Thousands of Pounds -----							
January	1031	671	764	710	616	477	1,007	111%
February	949	794	907	724	647	482	459	-5%
March	1252	976	994	802	6,189	637	1,120	76%
April	1,768	890	1,041	879	627	739	597	-19%
May	893	1,009	1,102	914	657	1,752	652	-63%
June	64,151	1,061	1,002	1,557	633	1,810	615	-66%
July	1,131	883	968	983	658	709	678	-4%
August	1,277	1,211	1,065	1,045	673	754	716	-5%
September	1,267	1,088	1,036	1,035	706	857	803	-6%
October	1010	701	880	930	947	611		
November	894	934	868	714	529	574		
December	827	774	570	552	529	501		
Total	76,450	10,992	11,197	10,845	13,411	9,903		
Outgoing	----- Thousands of Pounds -----							
January	4,168	4,113	3,368	2,182	1,806	2,189	2,883	32%
February	4,111	3,708	3,156	2,681	2,257	2,760	1,539	-44%
March	5,115	4,197	3,992	2,677	5,667	3,191	2,776	-13%
April	5,223	4,151	3,552	2,935	3,216	2,929	2,482	-15%
May	4,200	4,790	3,324	3,077	2,836	1,863	2,587	39%
June	69,684	4,285	4,096	3,126	3,188	2,511	3,340	33%
July	5,723	4,038	3,754	3,595	3,624	3,600	3,017	-16%
August	5,966	7,663	4,726	2,930	3,513	3,402	3,650	7%
September	6,887	4,285	3,311	2,768	3,202	3,652	3,233	-11%
October	4,550	3,794	2,617	3,407	2,951	3,023		
November	4,173	3,664	2,982	2,479	2,595	2,254		
December	4,196	2,996	2,314	2,866	2,017	2,542		
Total	123,996	51,684	41,192	34,723	36,872	33,916		

SOURCE: Alaska Department of Transportation and Public Facilities, Fairbanks International Airport, "Fairbanks International Airport Statistical Report", 2005-2011.

NOTE: Marked decrease in outgoing freight directly related to Evergreen International Airlines moving Anchorage construction materials in June 2005. USPS began shipping bypass mail to Barrow via truck rather than air as of March 2006. UPS made a sizeable stop in March 2009. Everts Air Fuel notable stop in May-June 2010. Sizeable stop by a domestic carrier in January 2011. Kalitta Air stopped at FAI March 2011.

^ June-August 2005 Evergreen International Airlines is moving Anchorage construction materials.

* Numbers are preliminary and may be subject to revision.

Economic Indicators

FAIRBANKS INTERNATIONAL AIRPORT TRANSIT FREIGHT*^
2005-2011

	2005	2006	2007	2008	2009	2010	2011	% Change 2010-11
	-----Thousands of Pounds-----							
January	10,472	6,428	575	299	463	572	886	55%
February	11,083	7,078	1,410	341	298	1,543	235	-85%
March	13,479	6,379	483	335	14,296	1,118	258	-77%
April	11,958	4,888	650	338	302	296	297	0%
May	9,515	5,173	699	261	245	342	344	1%
June	13,271	1,434	823	307	361	1,574	342	-78%
July	22,060	1,059	371	4,334	359	327	341	4%
August	12,981	910	572	5,168	350	593	321	-46%
September	13,064	1,543	376	329	292	8,508	305	-96%
October	8,251	428	805	1,294	268	451		
November	9,365	400	577	317	748	993		
December	6,757	304	1,362	553	940	364		
Total	142,256	36,024	8,703	13,876	18,922	16,681		

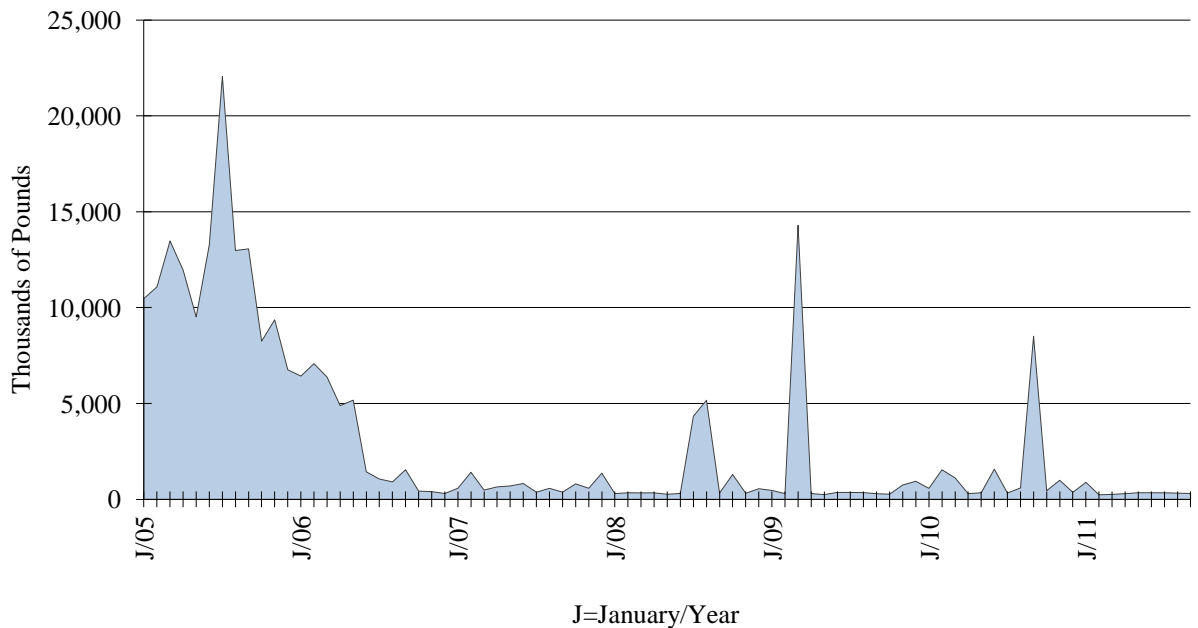
SOURCE: Alaska Department of Transportation and Public Facilities, Fairbanks International Airport, "Fairbanks International Airport Statistical Report", 2005-2011.

NOTE: *Lufthansa German Air Cargo* reduced frequency of service to FAI starting October 2005 and terminated service May 2006. *Cargolux* reduced frequency of service to FAI starting January 2005 and terminated service October 2006. *Volga-Dnepr Airlines* started routing their AN124 tech stop charter operations through FAI as of September 2006. On average FAI should see between 70-100 operations from *Volga-Dnepr Airlines* per year. Ukraine-based *Antonov Design Bureau*, made transit landings Feb-Mar 2010.

^ International Airlines: Evergreen and Volga-Dnepr made non-routine stops at FAI in July-August 2008. UPS made a sizeable stop in March 2009. Asiana, Cathay Pacific, China Air, Nippon Cargo, Atlas Air, China Cargo, and Evergreen International plus domestic carriers Fed Ex and UPS had transit landings in September and November 2010.

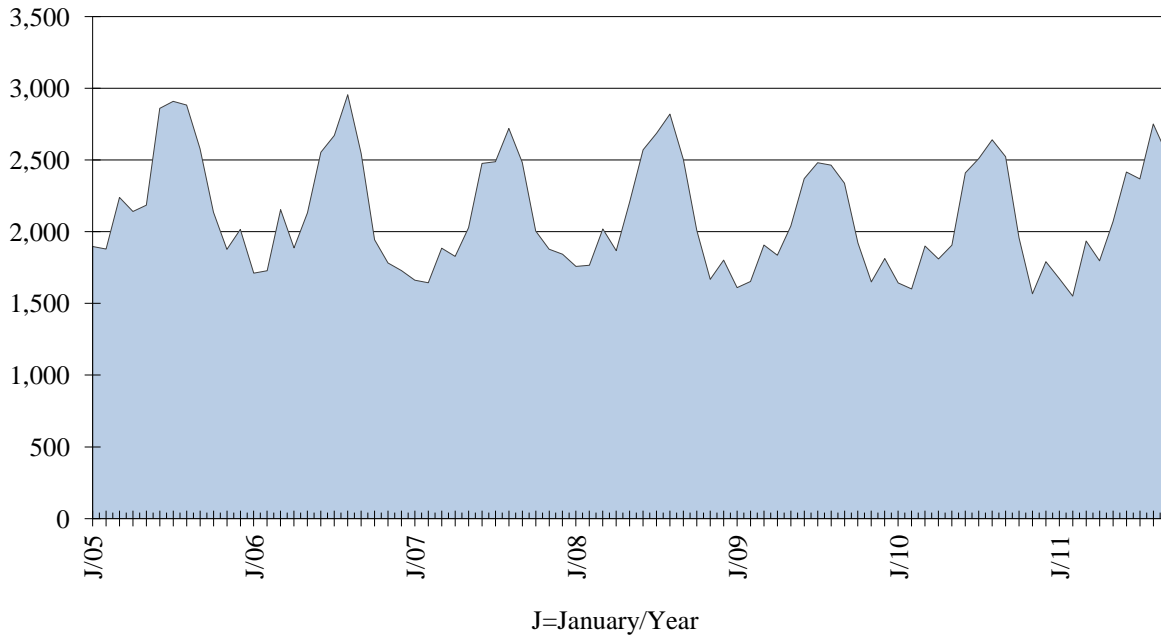
* Numbers are preliminary and may be subject to revision.

FAIRBANKS INTERNATIONAL AIRPORT TRANSIT FREIGHT
2005-2011



Economic Indicators

FAIRBANKS INTERNATIONAL AIRPORT REVENUE LANDINGS
2005-2011



FAIRBANKS INTERNATIONAL AIRPORT REVENUE LANDINGS*
2005-2011

	2005	2006	2007	2008	2009	2010	2011	% Change 2010-11
January	1,897	1,711	1,662	1,758	1,610	1,643	1,673	2%
February	1,879	1,728	1,644	1,766	1,653	1,601	1,551	-3%
March	2,239	2,154	1,885	2,019	1,907	1,900	1,935	2%
April	2,141	1,887	1,828	1,868	1,836	1,810	1,797	-1%
May	2,185	2,132	2,028	2,208	2,039	1,906	2,070	9%
June	2,860	2,554	2,476	2,571	2,370	2,410	2,416	0%
July	2,909	2,671	2,488	2,686	2,481	2,510	2,368	-6%
August	2,883	2,955	2,720	2,820	2,464	2,641	2,751	4%
September	2,578	2,545	2,483	2,503	2,338	2,523	2,544	1%
October	2,136	1,944	2,005	2,009	1,922	1,957		
November	1,877	1,782	1,878	1,668	1,650	1,567		
December	2,016	1,729	1,843	1,802	1,813	1,791		
Total	27,600	25,792	24,940	25,678	24,083	24,259		

SOURCE: Alaska Department of Transportation and Public Facilities, Fairbanks International Airport, "Fairbanks International Airport Statistical Report", 2005-2011.

* Numbers are preliminary and may be subject to revision.

Economic Indicators

FAIRBANKS INTERNATIONAL AIRPORT PASSENGERS*
2005-2011

	2005	2006	2007	2008	2009	2010	2011	% Change 2010-11
Incoming								
January	31,480	31,035	33,903	33,333	32,118	32,275	33,897	5%
February	27,554	27,305	28,548	31,801	29,051	29,677	30,763	4%
March	33,276	30,352	33,825	35,869	33,266	34,689	39,085	13%
April	27,323	27,373	29,406	30,386	28,065	29,191	30,449	4%
May	38,176	41,968	49,863	45,270	40,536	40,531	41,461	2%
June	57,662	57,856	58,926	60,012	51,532	51,352	51,949	1%
July	59,710	59,698	61,865	60,249	54,055	56,896	55,490	-2%
August	59,288	61,360	62,223	64,713	54,191	57,370	57,039	-1%
September	35,697	36,718	38,013	39,664	37,907	37,040	38,298	3%
October	32,115	30,314	33,784	31,565	47,049	35,120		
November	29,762	28,865	32,184	28,568	31,077	29,939		
December	30,479	29,859	32,339	31,534	31,855	32,823		
Total	462,522	462,703	494,879	492,964	470,702	466,903		
Outgoing								
January	27,245	27,801	28,912	29,821	29,763	28,908	30,157	4%
February	27,640	27,887	28,144	31,495	28,742	28,955	29,911	3%
March	33,658	34,783	34,049	35,259	32,379	34,426	38,609	12%
April	28,038	27,723	28,648	29,871	27,517	29,076	29,943	3%
May	34,416	37,112	37,992	40,420	35,530	36,495	37,776	4%
June	54,138	52,090	54,648	54,765	48,923	47,899	48,027	0%
July	55,375	52,512	55,668	58,257	52,252	54,198	52,019	-4%
August	55,894	56,570	57,332	58,267	50,500	53,742	53,832	0%
September	40,922	42,548	43,330	44,796	43,105	44,985	45,230	1%
October	33,664	31,312	35,169	34,349	35,654	36,204		
November	31,272	29,236	32,430	28,909	31,291	30,499		
December	35,359	35,735	35,697	34,171	36,778	36,844		
Total	457,621	455,309	472,019	480,380	452,434	462,231		

SOURCE: Alaska Department of Transportation & Public Facilities, Fairbanks International Airport, "Fairbanks International Airport Statistical Report", 2005-2011.

NOTE: Numbers do not include passengers in transit.

* Numbers are preliminary and may be subject to revision.

Economic Indicators

ALASKA HIGHWAY STATEWIDE ENTERING PASSENGERS*

Via the Yukon Territory
2005-2011

	2005	2006	2007	2008	2009	2010	2011	% Change 2010-11
January	2,212	2,064	2,733	2,108	2,388	2,216	2,213	0%
February	2,259	2,259	2,301	2,365	2,419	2,139	2,335	9%
March	3,464	3,355	3,806	3,681	3,958	3,434	3,725	8%
April	5,359	5,257	5,529	5,168	4,899	5,662	5,068	-10%
May	13,031	12,261	13,386	11,033	12,447	11,989	11,732	-2%
June	29,231	26,560	28,967	17,887	22,929	23,610	22,411	-5%
July	31,982	24,925	27,583	16,946	24,187	21,002	22,964	9%
August	23,641	20,296	21,776	13,246	18,311	16,553	20,063	21%
September	8,993	9,998	8,584	5,987	7,954	5,829	7,901	36%
October	3,888	4,149	3,549	3,832	3,803	3,949		
November	2,875	3,027	2,806	2,096	2,783	2,547		
December	2,153	2,451	2,456	2,145	2,237	2,334		
Total	129,088	116,602	123,476	86,494	108,315	101,264		

SOURCE: U.S. Department of Justice, Immigration and Naturalization Service, District 32, personal communications, 2005-2011.

NOTE: This entry point includes statewide travel for automobiles on the Alaska Highway and, during the summer, the Taylor Highway (Poker Creek). **Reminder:** 1st Qtr 2009 Homeland Security changes Entering data release policy creating a lag in data release and no comparative figure.

* Current year figures subject to revisions.

ALASKA HIGHWAY STATEWIDE EXITING PASSENGERS*

Via the Yukon Territory
2005-2011

	2005	2006	2007	2008	2009	2010	2011	% Change 2010-11
January	1,707	1,712	1,873	1,783	1,491	1,688	1,483	-12%
February	1,686	1,468	1,970	1,812	2,018	1,643	1,657	1%
March	2,670	2,717	3,204	2,455	2,380	2,542	2,297	-10%
April	3,596	3,200	3,701	2,608	2,884	3,155	2,615	-17%
May	6,769	3,892	7,283	6,990	7,057	7,358	6,771	-8%
June	16,911	16,913	18,767	15,502	13,932	14,771	15,473	5%
July	29,665	26,855	24,747	22,729	20,196	24,479	22,379	-9%
August	26,884	24,114	24,601	21,827	20,089	11,766	20,734	76%
September	12,914	12,236	13,657	10,585	10,522	11,196	10,341	-8%
October	4,747	6,403	4,827	3,657	4,145	4,673		
November	2,111	2,997	2,387	2,054	2,781	2,070		
December	1,983	2,283	2,326	1,573	1,998	1,613		
Total	111,643	104,790	109,343	93,575	89,493	86,954		

SOURCE: Canadian Customs Border Services, Area Ports, Yukon Government, 2005-2011.

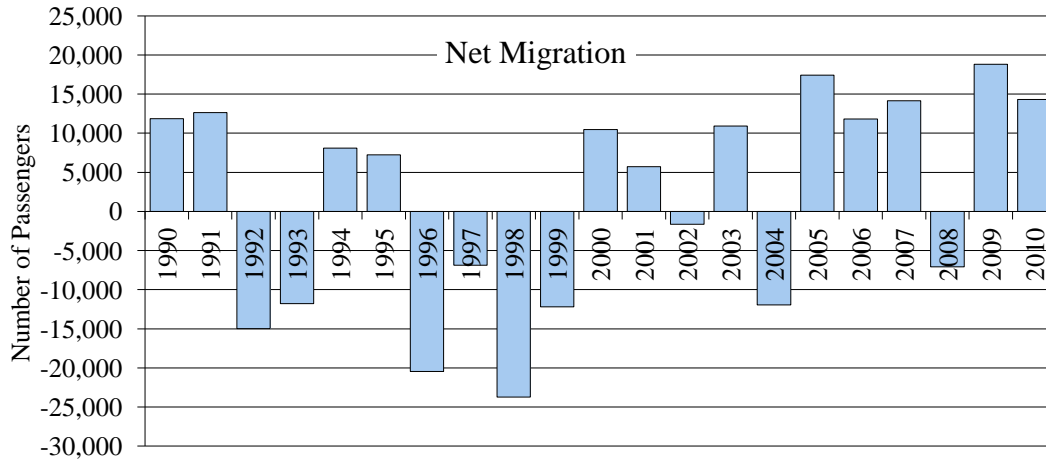
NOTE: This exit point includes statewide travel for automobiles on the Alaska Highway (Beaver Creek) and, during the summer through September 15th, the Taylor Highway (Little Gold).

* Current year figures subject to revisions.

Economic Indicators

ALASKA HIGHWAY STATEWIDE NET ANNUAL MIGRATION TRENDS

Via the Yukon Territory
1990-2010



SOURCE: U.S. Department of Justice, Immigration and Naturalization Service, District 32, and Customs Border Services, Area Ports, Yukon Government, Canada, personal communications 1990-2010.

ALASKA HIGHWAY STATEWIDE NET MONTHLY MIGRATION*

Via the Yukon Territory
2005-2011

	2005	2006	2007	2008	2009	2010	2011
January	505	352	860	325	897	528	730
February	573	791	331	553	401	496	678
March	794	638	602	1,226	1,578	892	1,428
April	1,763	2,057	1,828	2,560	2,015	2,507	2,453
May	6,262	8,369	6,103	4,043	5,390	4,631	4,961
June	12,320	9,647	10,200	2,385	8,997	8,839	6,938
July	2,317	-1,930	2,836	-5,783	3,991	-3,477	585
August	-3,243	-3,818	-2,825	-8,581	-1,778	4,787	-671
September	-3,921	-2,238	-5,073	-4,598	-2,568	-5,367	-2,440
October	-859	-2,254	-1,278	175	-342	-724	
November	764	30	419	42	2	477	
December	170	168	130	572	239	721	
Net	17,445	11,812	14,133	-7,081	18,822	14,310	

SOURCE: U.S. Department of Justice, Immigration and Naturalization Service, District 32, and Customs Border Services, Area Ports, Yukon Government, Canada, personal communications 2005-2011.

NOTE: Numbers denote the difference between the number of passengers entering and exiting statewide Alaska on the Alaska Highway and the Taylor Highway (summer only through September 15th). **Reminder:** 1st Qtr 2009 Homeland Security changes Entering data release policy creating a lag in data release and no comparative figure.

* Current year figures subject to revisions.

Economic Indicators

HOTEL/MOTEL ROOM RECEIPTS*

Fairbanks North Star Borough
2008-2011

	2008	2009*	2010*	2011*	% Change 2010-11
1st Quarter	\$4,928,353	\$5,554,495	\$5,536,300	\$6,328,162	14.3%
2nd Quarter*	\$15,450,099	\$11,655,651	\$14,635,993	\$13,646,596	-6.8%
3rd Quarter	\$29,652,248	\$25,322,981	\$27,310,791	\$26,149,158	-4.3%
4th Quarter*	\$7,251,731	\$7,235,815	\$6,969,241		
Total	\$57,282,431	\$49,768,942	\$54,452,325		

SOURCE: City of Fairbanks, Finance Dept., personal communications 2008-2011. City of Fairbanks bed tax website: <http://www.ci.fairbanks.ak.us/departments/clerks/bedtax.php>. City of North Pole Finance Department, FNSB Financial Services, personal communications 2008-2011.

NOTE: Room receipt figures are based on hotel/motel bed tax which is 8%. Receipts are **calculated on taxes paid**. There is a time lag between collection and reporting of these taxes. Added City of North Pole 3rd Qtr. 2009.

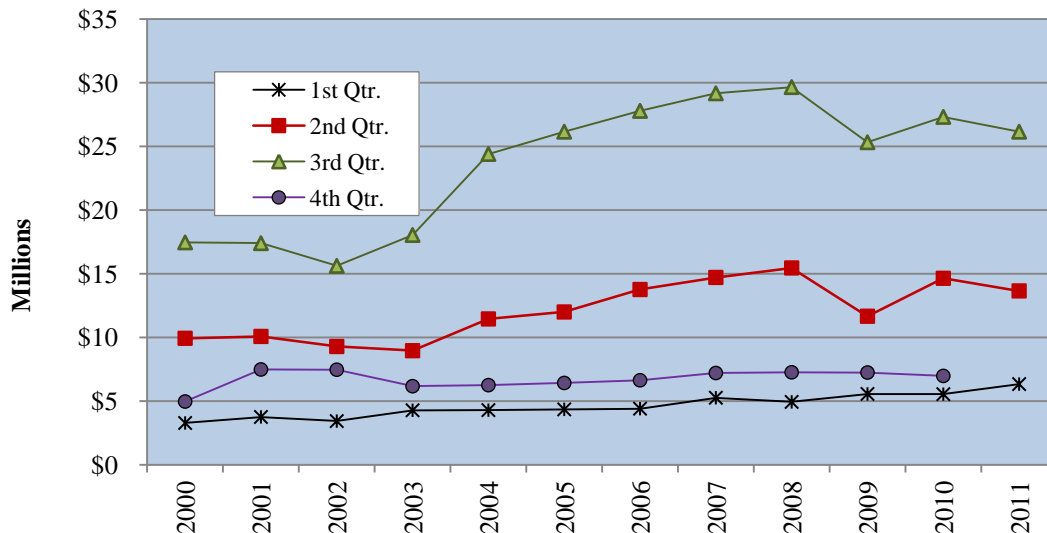
ADDITION/ADJUSTMENT TO TABLE:

City of North Pole began collecting Hotel-Motel Room Tax at (8%) according to Ordinance 09-03, February 2, 2009, (passed: February 17, 2009) an ordinance amending Title 4, and introducing Chapter 4.09, Hotel-Motel Room Tax; effective 5 p.m., February 28, 2009. City of North Pole data added to table above with adjustments beginning third quarter 2009.

* Numbers revised based on new data from accrual adjustments 2Q 2007 corrected January 2008. 4Q 2009 corrected May 2010. 2Q 2011 corrected September 2011.

QUARTERLY HOTEL/MOTEL ROOM RECEIPTS

Fairbanks North Star Borough
2000-2011



Economic Indicators

ANNUAL HOTEL/MOTEL ROOM RECEIPTS*

Fairbanks North Star Borough
1993-2010

Year	1st Qtr.	2nd Qtr.	3rd Qtr.	4th Qtr.	Annual Total	% Chg fr Prev Yr
1993	\$1,912,664	\$6,509,495	\$13,079,188	\$2,910,413	\$24,411,760	15.6%
1994	\$2,139,404	\$7,282,236	\$14,218,355	\$3,889,047	\$27,529,042	12.8%
1995	\$2,342,331	\$8,112,819	\$14,946,769	\$3,811,319	\$29,213,238	6.1%
1996	\$2,344,161	\$8,651,705	\$15,188,972	\$3,189,160	\$29,373,998	0.6%
1997	\$2,414,719	\$7,794,574	\$18,608,324	\$3,526,383	\$32,344,000	10.1%
1998	\$2,551,863	\$10,173,376	\$17,682,597	\$4,296,950	\$34,704,786	7.3%
1999	\$3,055,908	\$10,093,298	\$18,457,738	\$4,567,227	\$36,174,171	4.2%
2000	\$3,274,010	\$9,923,679	\$17,456,009	\$4,959,298	\$35,612,996	-1.6%
2001	\$3,745,458	\$10,072,118	\$17,394,993	\$7,476,847	\$38,689,416	8.6%
2002	\$3,421,975	\$9,279,386	\$15,610,143	\$7,457,382	\$35,768,886	-7.5%
2003	\$4,269,920	\$8,951,462	\$18,034,906	\$6,161,282	\$37,417,570	4.6%
2004	\$4,282,186	\$11,444,548	\$24,397,446	\$6,245,425	\$46,369,605	23.9%
2005	\$4,341,420	\$11,991,395	\$26,148,408	\$6,416,203	\$48,897,426	5.5%
2006	\$4,396,630	\$13,755,407	\$27,784,543	\$6,628,268	\$52,564,848	7.5%
2007	\$5,253,550	\$14,703,344	\$29,164,266	\$7,198,573	\$56,319,733	7.1%
2008	\$4,928,353	\$15,450,099	\$29,652,248	\$7,251,731	\$57,282,431	1.7%
2009	\$5,554,495	\$11,655,651	\$25,322,981	\$7,235,815	\$49,768,942	-13.1%
2010	\$5,536,300	\$14,635,993	\$27,310,791	\$6,969,241	\$54,452,325	9.4%

SOURCE: Fairbanks North Star Borough, City of Fairbanks, and City of North Pole, Finance Departments, personal communications 1993-2010.

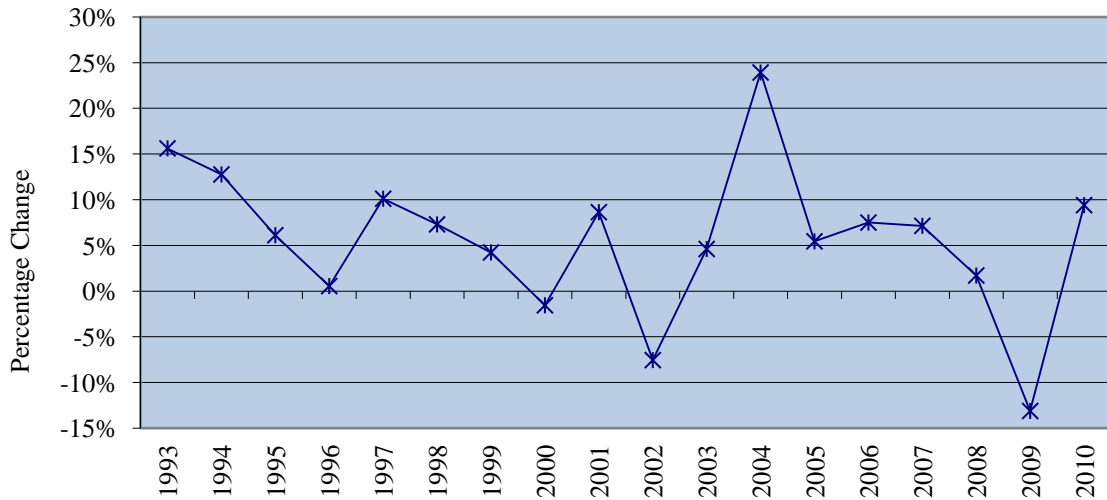
NOTE: Room receipt figures are based on hotel/motel bed tax which is 8%. Receipts are calculated on taxes paid. There is a time lag between collection and reporting of these taxes.

City of North Pole was added beginning third quarter 2009.

* FNSB accrual adjustments will occur which means current figure supersedes previous figures.

ANNUAL HOTEL/MOTEL ROOM RECEIPTS

Fairbanks North Star Borough
1993-2010



Economic Indicators

UNIVERSITY OF ALASKA MUSEUM VISITORS

Fairbanks, Alaska
2007-2011

	2007	2008	2009	2010	2011	% Change 2010-11
January	2,436	1,955	2,236	1,647	1,705	4%
February	4,014	3,784	4,502	4,465	3,199	-28%
March	4,972	4,607	3,394	3,725	4,230	14%
April	3,271	3,503	2,328	2,272	2,525	11%
May	7,771	7,595	5,767	5,367	4,303	-20%
June	16,289	19,837	15,275	14,051	12,517	-11%
July	19,877	22,709	16,548	16,587	14,169	-15%
August	16,322	19,369	14,709	14,193	12,851	-9%
September	8,392	9,215	7,567	7,698	6,743	-12%
October	4,149	3,517	3,249	4,207		
November	3,268	2,146	1,886	2,567		
December	3,762	2,532	2,437	3,785		
Total	94,523	100,769	79,898	80,564		

SOURCE: University of Alaska Museum, University of Alaska, Fairbanks, personal communications 2007-2011.

NOTE: Numbers are preliminary and may be subject to revision.

MORRIS THOMPSON CULTURAL AND VISITOR CENTER

Fairbanks, Alaska
2007-2011

Month	2007	2008*	2009	2010	2011	% Change 2010-11
January			1,581	2,462	3,200	30%
February			2,334	3,142	4,039	29%
March			2,298	5,173	5,368	4%
April			2,573	3,892	4,119	6%
May			5,366	10,222	7,728	-24%
June			10,489	16,975	17,896	5%
July			12,800	19,412	16,852	-13%
August			10,314	18,127	15,981	-12%
September			6,771	10,590	10,707	1%
October	-	400	3,155	4,608		
November	-	450	2,935	3,425		
December	-	600	3,379	2,879		
Total	0	1,450	63,995	100,907		

SOURCE: The Morris Thompson Cultural and Visitor Center Administration Office, information can be found at <http://www.morrithompsoncenter.org>, personal communications 2007-2011. Admission is free.

NOTE: The Morris Thompson Cultural and Visitor Center partners include APLIC, (FCVB) Fairbanks Convention and Visitor Bureau, the Alaska Geographic Store, Denakkanaaga, the regional Alaska Native Elder's organization, and Tanana Chiefs Conference – Cultural Program. One headcount per visitor is recorded at the entry for all Cultural Center partners.

The (APLIC) Alaska Public Lands Information Center is a cooperative effort of the Alaska Division of Tourism, Alaska Division of Parks and Outdoor Recreation, Alaska Department of Fish and Game, Bureau of Land Management, National Park Service, USDA Forest Service, Fish and Wildlife Service, and U.S. Geological Survey.

Additional note: Major road construction in front of the MTCC from May-July 2011 effected counts.

Economic Indicators

VALUE OF AGRICULTURAL PRODUCTION[^]

Tanana Valley and State, Alaska
2004-2010

TANANA VALLEY AND STATE	2004	2005	2006	2007	2008	2009	2010
CROPS (Tanana Valley)	-----Production Value (in thousands of dollars)-----						
Grain	586	876	614	699	485	na	na
Hay	2,798	2,995	2,455	4,200	3,100	2,680	3,415
Silage (small grain and hay)	255	339	280	217	228	na	na
Potatoes	1,004	823	929	1,000	480	na	na
Vegetables	40	45	20	65	50	na	na
Other Vegetables*	110	200	230	235	293	na	na
Total (TV) Crop Production	\$4,793	\$5,278	\$4,528	\$6,416	\$4,644	\$4,844	\$5,702
LIVESTOCK (Tanana Valley)	-----Production Value (in thousands of dollars)-----						
Beef & Veal	518	920	1,054	864	754	888	1,012
Pork	204	300	275	221	170	202	207
Dairy	458	564	425	440	399	na	na
Other Livestock**	6	7	8	8	7	na	na
Total (TV) Livestock Production	\$1,186	\$1,791	\$1,762	\$1,533	\$1,330	\$1,244	\$1,451
Total (TV) Production Value	\$5,979	\$7,069	\$6,290	\$7,949	\$5,974	\$6,088	\$7,153
CROPS (State)	-----Production Value (in thousands of dollars)-----						
Grain	600	907	626	709	485	927	975
Hay	6,440	7,200	5,500	8,370	6,300	7,130	7,320
Silage (small grain and hay)	565	670	472	465	305	390	495
Potatoes	3,469	3,403	3,757	3,538	3,348	3,315	3,570
Vegetables	1,371	1,911	1,767	1,556	1,371	1,875	2,062
Other Vegetables*	1,068	1,596	1,535	1,516	2,007	1,280	1,408
Total State Crop Production	\$13,513	\$15,687	\$13,657	\$16,154	\$13,816	\$14,917	\$15,830
LIVESTOCK (State)	-----Production Value (in thousands of dollars)-----						
Beef & Veal	1,818	2,402	3,019	2,527	2,423	2,226	2,888
Pork	473	561	541	427	398	481	617
Dairy	3,008	2,754	1,970	2,006	1,699	1,470	1,732
Other Livestock**	38	45	51	48	51	51	0
Total State Livestock Production	\$5,337	\$5,762	\$5,581	\$5,008	\$4,571	\$4,228	\$5,237
Total State Production Value	\$18,850	\$21,449	\$19,238	\$21,162	\$18,387	\$19,145	\$21,067

SOURCE: Alaska Agricultural Statistics Service, *Alaska Agricultural Statistics*, website: www.nass.usda.gov/ak 2004-2011.

NOTE: NASS began standardizing and centralizing their data collection and estimate publications across the US in 2010. Beginning in 2009 they will only report State level data for barley, oats, potatoes, vegetables and milk. USDA began inspecting the BY Farms slaughterhouse in late 2004. Calculations or adjustments were based on most recent historic data for silage value.

na not available.

^ One year lag in data. Numbers are provisional and may be revised.

***** Does not include Greenhouse or Nursery vegetables.

****** Does not include reindeer.

EMPLOYMENT

CIVILIAN LABOR FORCE UNEMPLOYMENT RATES*

Fairbanks MSA, Alaska and the United States
2005-2011

		2005	2006	2007	2008	2009	2010	2011
F	January	7.0	6.7	6.3	6.4	7.8	8.7	7.8
A	February	7.4	7.0	6.3	6.4	7.8	8.5	7.4
I	March	6.5	6.4	5.7	6.1	7.5	8.2	7.3
R	April	6.2	6.1	5.5	5.5	6.7	7.2	6.7
B	May	5.4	5.4	4.9	5.5	7.0	6.8	6.5
A	June	5.8	5.8	5.8	6.2	7.5	6.9	7.0
N	July	5.1	5.3	5.1	5.5	6.6	6.2	6.1
K	August	4.7	4.9	4.8	5.3	6.4	6.1	5.9
S	September	5.2	5.0	5.0	5.3	6.7	6.2	5.8
	October	5.2	4.6	4.6	5.7	7.0	6.3	
M	November	5.8	5.1	5.2	5.9	7.1	6.8	
S	December	6.0	5.3	5.8	6.5	7.4	7.1	
A	Average	5.8	5.6	5.4	5.9	7.1	7.1	
	January	8.0	7.8	7.2	7.2	8.1	9.3	8.6
	February	8.4	8.1	7.1	7.2	8.5	9.5	8.4
	March	7.6	7.4	6.6	7.0	8.3	9.2	8.2
A	April	7.1	7.0	6.2	6.4	7.7	8.3	7.7
L	May	6.4	6.4	5.7	6.3	7.5	7.7	7.3
A	June	6.7	6.5	6.0	6.5	7.9	7.7	7.8
S	July	5.9	5.9	5.5	5.8	7.1	7.0	6.8
K	August	5.7	5.5	5.3	5.8	7.1	7.0	6.6
A	September	6.3	5.7	5.5	5.8	7.5	7.2	6.7
	October	6.3	5.6	5.5	6.0	7.8	7.3	
	November	7.1	6.1	5.9	6.4	7.8	7.8	
	December	7.2	6.4	6.5	7.0	8.3	8.1	
	Average	6.9	6.5	6.1	6.5	7.8	8.0	
U	January	5.7	5.1	5.0	5.4	8.5	10.6	9.8
N	February	5.8	5.1	4.9	5.2	8.9	10.4	9.5
I	March	5.4	4.8	4.5	5.2	9.0	10.2	9.2
T	April	4.9	4.5	4.3	4.8	8.6	9.5	8.7
E	May	4.9	4.4	4.3	5.2	9.1	9.3	8.7
D	June	5.2	4.8	4.7	5.7	9.7	9.6	9.3
	July	5.2	5.0	4.9	6.0	9.7	9.7	9.3
S	August	4.9	4.6	4.6	6.1	9.6	9.5	9.1
T	September	4.8	4.4	4.5	6.0	9.5	9.2	8.8
A	October	4.6	4.1	4.4	6.1	9.5	9.0	
T	November	4.8	4.3	4.5	6.5	9.4	9.3	
E	December	4.6	4.3	4.8	7.1	9.7	9.1	
S	Average	5.1	4.6	4.6	5.8	9.3	9.6	

SOURCES: Alaska Department of Labor, Research and Analysis Section, website: <http://www.laborstats.alaska.gov>, and personal communications 2005-2011. U.S. Department of Labor, Bureau of Labor Statistics, *Current Population Survey*, and website: <http://www.bls.gov>, 2005-2011.

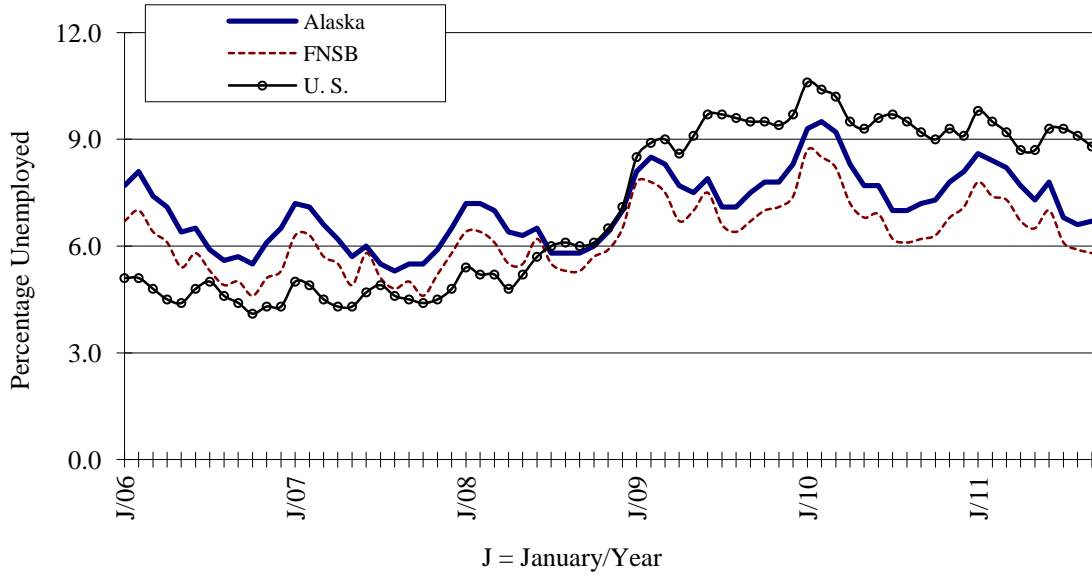
NOTE: Rates presented are "not seasonally adjusted". Local data prior to 2000 is not comparable with data from 2000 forward due to the way the labor force stats are calculated for boroughs and census areas.

* May be subject to revision.

Employment

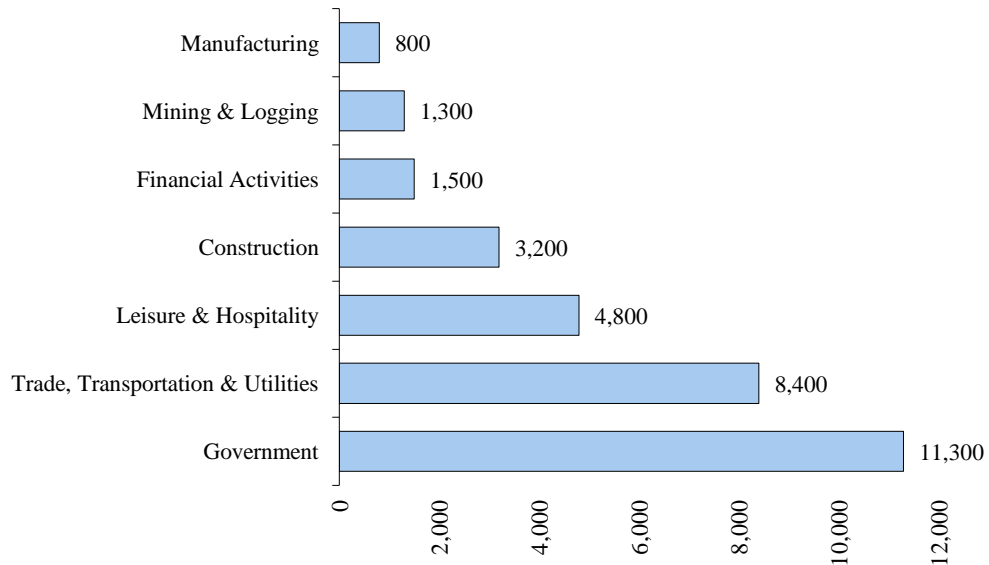
CIVILIAN LABOR FORCE UNEMPLOYMENT RATES

State of Alaska, FNSB, the United States
2006-2011



AVERAGE MONTHLY EMPLOYMENT ESTIMATES BY SECTOR

Fairbanks North Star Borough
Third Quarter Average 2011



Employment

AVERAGE MONTHLY EMPLOYMENT ESTIMATES BY INDUSTRY

Fairbanks North Star Borough (MSA¹)
2010-2011

Industry	2011			Year-to-Date Average		% Change 2010-11
	1st Qtr.	2nd Qtr.	3rd Qtr.	2011	2010	
Reporting Period	Jan-Mar	Apr-Jun	Jul-Sept	Jan-Sept	Jan-Sept	Jan-Sept
Mining and Logging³	1,100	1,200	1,300	1,300	1,100	18.2%
Construction	2,000	2,700	3,200	3,200	2,700	18.5%
Manufacturing	600	700	800	800	600	33.3%
Trade/Transportation/Utilities	7,300	8,000	8,400	8,400	7,700	9.1%
Wholesale Trade	600	600	700	700	700	0.0%
Retail Trade	4,300	4,700	4,800	4,800	4,500	6.7%
Trans/Warehouse/Utilities	2,400	2,700	2,800	2,800	2,500	12.0%
Information	500	500	500	500	500	0.0%
Financial Activities	1,400	1,500	1,500	1,500	1,600	-6.3%
Professional & Business Svcs	2,300	2,600	2,900	2,900	2,400	20.8%
Educational & Health Services	4,900	5,100	5,000	5,000	4,900	2.0%
Health Care	3,700	3,700	3,800	3,800	3,700	2.7%
Leisure & Hospitality	3,700	4,300	4,800	4,700	4,200	11.9%
Other Services	1,100	1,200	1,200	1,200	1,200	0.0%
Government	12,100	11,900	11,300	11,600	12,200	-4.9%
Federal Government	3,300	3,500	3,600	3,600	3,500	2.9%
State Government	5,400	5,600	5,200	5,400	5,400	0.0%
Local Government ²	3,400	2,700	2,500	2,700	3,200	-15.6%
Total Nonfarm	37,100	39,500	40,800	39,100	38,900	0.5%

SOURCE: Alaska Department of Labor and Workforce Development, Research and Analysis Section, and the U.S. Department of Labor Statistics. State website: <http://labor.alaska.gov/research/ces/ces.htm>, 2011.

NOTE: Data provided are subject to change. Employment reporting format has changed because Fairbanks became a metropolitan area in 2003 and 2004. Please note that rounding is to nearest 100.

- Benchmark date: March 2010 for the 2010 dataset.

- Nonfarm Wage & Salary excludes self-employed workers, fishers, domestics, and unpaid family workers.

- Government includes employees of public school systems and the University of Alaska.

- Beginning January 2001, wage and salary employment estimates were published under a new classification system. The Standard Industrial Classification system (SIC) has been replaced by the North American Industry Classification System (NAICS). Data prior to 2001 are comparable only at the Total Nonfarm and Government levels.

¹ Metropolitan Statistical Area

² As of January 2001, certain federally-recognized tribal entities were moved to Local Government, which created a series break for Total Government and Local Government. Please see the April 2002 Alaska Economic Trends publication for a detailed explanation.

³ This category was previously called "Natural Resources and Mining". The change is in name only; the industries it includes remain the same.

Employment

ANNUAL AVERAGE MONTHLY EMPLOYMENT By Earned Income and Labor Force Fairbanks North Star Borough 2005-2010

EARNED INCOME DATA				
Year	Annual Average			% change 2006-2010
	2005	2006	2010	
Wage and Salary Employment ¹	37,700	38,000	38,800	2.1%
Self-employed ²	2,780	2,780	2,618 ^[1]	-5.8%
Military Active Duty Personnel ³	7,837	9,139	8,023	-12.2%

SOURCE: Alaska Department of Labor and Workforce Development, Research and Analysis Section,¹Current Employment Statistics (CES); ²US Census Bureau, American Community Survey (ACS) Estimates; ³FNSB Community Research Quarterly, 2005-2010, October 2011 .

NOTE: [1] Because the US Census did not have the self-employment question on the 2010 Census there is no actual data to verify, however, the US Census ACS Estimates are the next best resource with 5.8% (in 2010).

Definition of Employment: These are all persons who, during the reference week (the week including the 12th day of the month), (a) did any work as paid employees, worked in their own business or profession or on their own farm, or worked 15 hours or more as unpaid workers in an enterprise operated by a member of their family, or (b) were not working but who had jobs from which they were temporarily absent because of vacation, illness, bad weather, childcare problems, maternity or paternity leave, labor-management dispute job training, or other family or personal reasons, whether or not they were paid for the time off or were seeking other jobs. Each employed person is counted only once, even if he or she holds more than one job.

Definition of Unemployment: Included are all persons who had no employment during the reference week, were available for work, except for temporary illness, and had made specific efforts to find employment some time during the 4 week-period ending with the reference week. Persons who were waiting to be recalled to a job from which they had been laid off need not have been looking for work to be classified as unemployed.

LABOR FORCE DATA				
Year	Annual Average			% change 2006-2010
	2005	2006	2010	
Civilian Labor Force ²¹	44,602	44,914	46,910	4.4%
Military Active Duty Personnel ²²	7,837	9,139	8,023	-12.2%
Total Labor Force	52,439	54,053	54,933	1.6%
Total Labor Force Growth 2006-2010	na	1,614	880	-45.5%

SOURCE: Alaska Department of Labor and Workforce Development, Research and Analysis Section,²¹Current Employment Statistics (CES); ²²FNSB Community Research Quarterly, 2005-2011 .

na not available.

Definition of Labor Force: Included are all persons in the civilian non-institutional population classified as either employed or unemployed.

Employment

ANNUAL AVERAGE MONTHLY EMPLOYMENT BY INDUSTRY

Fairbanks North Star Borough
2007-2010

Industry	2007	2008	2009	2010	% Change 2009-10
Natural Resources & Mining	1,153	1,100	1,108	1,161	4.8%
Agriculture, Forestry, Fishing, Hunting	36	42	40	45	12.5%
Mining	1,116	1,058	1,068	1,117	4.6%
Construction	2,756	2,765	2,490	2,641	6.1%
Construction of Buildings	849	804	743	751	1.1%
Heavy Construction	263	206	229	374	63.3%
Specialty Trade Contractors	1,644	1,755	1,519	1,517	-0.1%
Manufacturing	653	649	639	604	-5.5%
Trade, Transportation & Utilities	7,673	7,701	7,738	7,642	-1.2%
Wholesale Trade	663	652	656	654	-0.3%
Retail Trade	4,656	4,658	4,537	4,551	0.3%
General Merchandise Stores	1,268	1,388	1,355	1,341	-1.0%
Food & Beverage	450	486	456	471	3.3%
Transportation & Warehousing	2,038	2,029	2,141	2,020	-5.7%
Air Transportation	609	650	606	607	0.2%
Transit & Ground Passenger	194	-	278	299	*
Information	564	588	533	497	-6.8%
Telecommunication	296	317	309	296	-4.2%
Financial Activities	1,597	1,534	1,558	1,553	-0.3%
Finance & Insurance	875	894	887	877	-1.1%
Credit Intermediation, etc.	519	536	534	517	-3.2%
Real Estate, Renting & Leasing	722	641	671	676	0.7%
Real Estate	465	384	407	428	5.2%
Professional & Business Services	2,223	2,341	2,174	2,368	8.9%
Professional, Scientific, Technical Services	1,089	1,197	1,300	1,515	16.5%
Management of Companies & Enterprises	40	-	57	53	*
Administrative & Waste Services	1,095	-	817	800	*
Educational & Health Services	4,239	4,376	4,541	4,910	8.1%
Health Care & Social Assistance	4,096	4,226	4,384	4,675	6.6%
Leisure & Hospitality	4,316	4,161	4,001	4,084	2.1%
Accommodation	1,061	1,051	927	969	4.5%
Food Services & Drinking Places	2,777	2,653	2,591	2,671	3.1%
Other Services	1,287	1,245	1,251	1,116	-10.8%
Membership Organizations, etc.	607	602	610	510	-16.4%
Repair & Maintenance	456	439	434	403	-7.1%
Government	11,732	11,789	11,816	12,072	2.2%
Federal Government	3,450	3,472	3,469	3,495	0.7%
State Government	5,233	5,251	5,289	5,487	3.7%
Local Government	3,049	3,066	3,058	3,090	1.0%
Unclassified Establishments	36	11	7	39	457.1%
Total Industries	38,228	38,261	37,855	38,688	2.2%

SOURCE: Alaska Department of Labor and Workforce Development, Research and Analysis Section; *Quarterly Census of Employment & Wages* (aka *Employment & Earnings Summary*, 2010 (data are preliminary and subject to revision).

NOTE: Blanks in the Total Earnings & Avg Mo Earnings columns due to confidentiality; data are suppressed.

* Not available.

Employment

ANNUAL AVERAGE MONTHLY WAGE BY INDUSTRY

Fairbanks North Star Borough
2007-2010

Industry	2007	2008	2009	2010	% Change 2009-2010
Natural Resources & Mining	\$6,448	\$6,993	\$7,414	\$7,348	-0.9%
Agriculture, Forestry, Fishing, Hunting	\$1,837	\$1,695	\$1,793	\$1,711	-4.6%
Mining	\$6,598	\$7,201	\$7,624	\$7,574	-0.7%
Construction	\$5,223	\$5,625	\$5,656	\$5,922	4.7%
Construction of Buildings	\$4,834	\$5,273	\$5,524	\$5,382	-2.6%
Heavy Construction	\$6,036	\$6,493	\$6,896	\$6,217	-9.8%
Specialty Trade Contractors	\$5,294	\$5,684	\$5,534	\$6,117	10.5%
Manufacturing	\$4,122	\$4,212	\$4,370	\$4,416	1.1%
Trade, Transportation & Utilities	\$3,189	\$3,276	\$3,390	\$3,240	-4.4%
Wholesale Trade	\$3,525	\$3,809	\$4,037	\$4,035	0.0%
Retail Trade	\$2,444	\$2,475	\$2,501	\$2,549	1.9%
General Merchandise Stores	\$2,264	\$2,325	\$2,302	\$2,342	1.7%
Food & Beverage	\$2,273	\$2,274	\$2,343	\$2,358	0.6%
Transportation & Warehousing	\$4,358	\$4,443	\$4,523	\$3,849	-14.9%
Air Transportation	\$3,471	\$3,467	\$3,674	\$3,693	0.5%
Transit & Ground Passenger	-	-	\$2,366	\$2,272	-4.0%
Information	\$4,042	\$4,212	\$4,251	\$4,258	0.2%
Telecommunication	\$5,272	\$5,166	\$5,058	\$5,026	-0.6%
Financial Activities	\$3,568	\$3,611	\$3,745	\$3,878	3.6%
Finance & Insurance	\$3,830	\$3,828	\$4,006	\$4,238	5.8%
Credit Intermediation, etc.	\$3,446	\$3,419	\$3,720	\$3,914	5.2%
Real Estate, Renting & Leasing	\$3,252	\$3,308	\$3,399	\$3,410	0.3%
Real Estate	\$3,350	\$3,165	\$3,213	\$3,236	0.7%
Professional & Business Services	\$3,321	\$3,561	\$3,719	\$3,848	3.5%
Professional, Scientific, Technical Services	\$3,617	\$3,985	\$4,107	\$4,229	3.0%
Management of Companies & Enterprises	-	-	\$5,564	\$5,871	5.5%
Administrative & Waste Services	-	-	\$2,971	\$2,996	0.8%
Educational & Health Services	\$3,200	\$3,387	\$3,465	\$3,472	0.2%
Health Care & Social Assistance	\$3,234	\$3,425	\$3,499	\$3,512	0.4%
Leisure & Hospitality	\$1,426	\$1,484	\$1,487	\$1,487	0.0%
Accommodation	\$2,259	\$2,312	\$2,349	\$2,183	-7.1%
Food Services & Drinking Places	\$1,155	\$1,210	\$1,240	\$1,278	3.1%
Other Services	\$2,213	\$2,278	\$2,363	\$2,369	0.3%
Membership Organizations, etc.	\$1,823	\$1,868	\$1,977	\$1,852	-6.3%
Repair & Maintenance	\$3,064	\$3,150	\$3,275	\$3,389	3.5%
Government	\$3,832	\$3,948	\$4,176	\$4,297	2.9%
Federal Government	\$4,762	\$4,793	\$4,946	\$5,220	5.5%
State Government	\$3,560	\$3,727	\$3,980	\$4,004	0.6%
Local Government	\$3,247	\$3,370	\$3,641	\$3,774	3.7%
Unclassified Establishments	\$2,277	\$3,299	\$3,291	\$2,081	-36.8%
Total Industries	\$3,452	\$3,606	\$3,738	\$3,789	1.4%

SOURCE: Alaska Department of Labor and Workforce Development, Research and Analysis Section; *Quarterly Census of Employment & Wages* fka *Employment & Earnings Summary*, 2010 (data are preliminary and subject to revision).

NOTE: Blanks in the Total Earnings & Avg Mo Earnings columns due to confidentiality; data are suppressed.

* Not available.

Employment

QUARTERLY CENSUS OF EMPLOYMENT AND WAGES BY INDUSTRY*^

Fairbanks North Star Borough

By Quarter

Industry	--4Q 2010 Avg Mo--		--1Q 2011 Avg Mo--		% Chg from prev Qtr	
	Employmt	Wage	Employmt	Wage	Employmt	Wage
Natural Resources & Mining	1,292	\$7,964	1,091	\$7,038	-15.6%	-11.6%
Agriculture, Forestry, Fishing, Hunting	24	\$1,859	25	\$1,460	4.2%	-21.5%
Mining	1,268	\$8,079	1,066	\$7,171	-15.9%	-11.2%
Construction	2,368	\$6,359	1,810	\$5,027	-23.6%	-20.9%
Construction of Buildings	710	\$5,963	508	\$4,631	-28.5%	-22.3%
Heavy Construction	283	\$6,264	288	\$5,405	1.8%	-13.7%
Specialty Trade Contractors	1,376	\$6,582	1,014	\$5,117	-26.3%	-22.3%
Manufacturing	590	\$4,610	515	\$4,660	-12.7%	1.1%
Trade, Transportation & Utilities	7,504	\$3,379	7,299	\$3,179	-2.7%	-5.9%
Wholesale Trade	653	\$4,437	627	\$3,900	-4.0%	-12.1%
Retail Trade	4,617	\$2,626	4,454	\$2,548	-3.5%	-3.0%
Food & Beverage	477	\$2,323	450	\$2,405	-5.7%	3.5%
General Merchandise Stores	1,351	\$2,345	1,259	\$2,308	-6.8%	-1.6%
Transportation & Warehousing	1,825	\$4,040	1,810	\$3,776	-0.8%	-6.5%
Air Transportation	585	\$3,735	573	\$3,564	-2.1%	-4.6%
Transit & Ground Passenger	315	\$2,517	316	\$2,160	0.3%	-14.2%
Information	487	\$4,350	537	\$3,955	10.3%	-9.1%
Telecommunication	292	\$5,273	290	\$5,004	-0.7%	-5.1%
Financial Activities	1,537	\$4,258	1,408	\$3,885	-8.4%	-8.8%
Finance & Insurance	880	\$4,675	782	\$4,388	-11.1%	-6.1%
Credit Intermediation, etc.	512	\$4,070	503	\$4,395	-1.8%	8.0%
Real Estate, Renting & Leasing	657	\$3,699	625	\$3,255	-4.9%	-12.0%
Real Estate	421	\$3,380	401	\$3,139	-4.8%	-7.1%
Professional & Business Services	2,360	\$4,521	2,336	\$3,546	-1.0%	-21.6%
Professional, Scientific, Technical Services	1,515	\$5,186	1,446	\$3,729	-4.6%	-28.1%
Management of Companies & Enterprises	49	\$5,698	115	\$5,864	134.7%	2.9%
Administrative & Waste Services	796	\$3,183	776	\$2,865	-2.5%	-10.0%
Educational & Health Services	4,934	\$3,731	4,858	\$3,444	-1.5%	-7.7%
Health Care & Social Assistance	4,695	\$3,775	4,622	\$3,490	-1.6%	-7.5%
Leisure & Hospitality	3,724	\$1,574	3,603	\$1,405	-3.2%	-10.7%
Accommodation	747	\$2,589	752	\$1,987	0.7%	-23.3%
Food Services & Drinking Places	2,612	\$1,315	2,532	\$1,246	-3.1%	-5.2%
Other Services	1,106	\$2,449	1,109	\$2,388	0.3%	-2.5%
Repair & Maintenance	409	\$3,544	420	\$3,380	2.7%	-4.6%
Membership Organizations, etc.	491	\$1,861	490	\$1,858	-0.2%	-0.2%
Government	12,624	\$4,346	12,297	\$3,922	-2.6%	-9.8%
Federal Government	3,377	\$5,612	3,339	\$4,903	-1.1%	-12.6%
State Government	5,656	\$4,148	5,357	\$3,730	-5.3%	-10.1%
Local Government	3,591	\$3,278	3,600	\$3,299	0.3%	0.6%
Unclassified Establishments	50	\$2,090	46	\$2,189	-8.0%	4.7%
Total Industries	38,577	\$3,993	36,908	\$3,550	-4.3%	-11.1%

SOURCE: Alaska Department of Labor and Workforce Development, Research and Analysis Section; *Quarterly Census of Employment & Wages (QCEW)* fka *Employment & Earnings Summary*, State of Alaska website: <http://almis.labor.state.ak.us>, 2011.

* All numbers are preliminary and there is an approximate 6 month lag in data release, also preliminary and subject to revision.

HOUSING

APARTMENT / MULTI-PLEX VACANCY RATES ^

Fairbanks North Star Borough
2007-2011

	2007	2008	2009	2010	2011
	-----Percent Vacant -----				
March ^	1.5	9.6	18.5	6.9	8.8
June	9.7	9.4	11.1	7.6	10.2
September	11.9	15.6	5.3	8.9	13.3
December	12.2	20.2	6.6	10.1	

SOURCE: FNSB Community Research Center Rental Survey, 2007-2011.

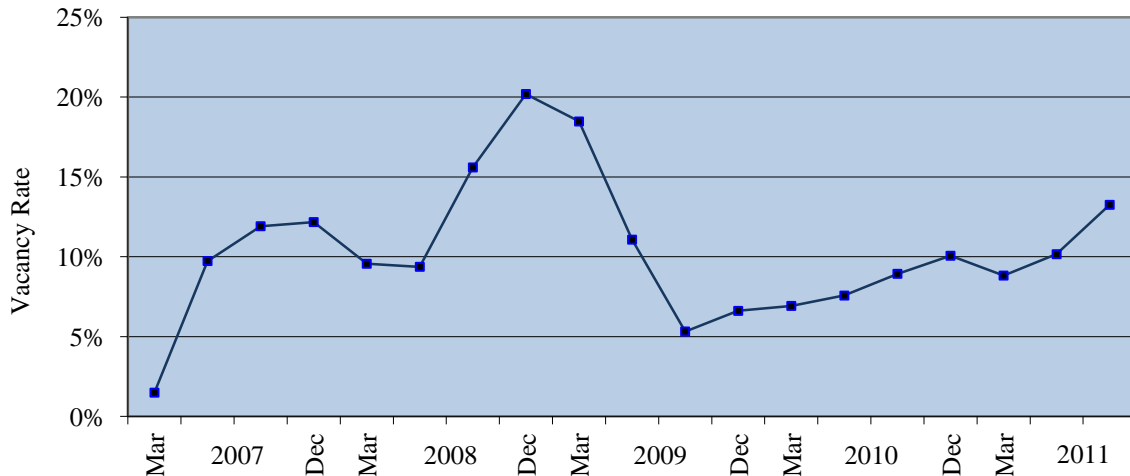
NOTE: Vacancy rates are based on a sample of 3,000 to 4,000 rental units and include data for apartments, duplexes, tri-plexes and larger multi-plex rental properties. They do not include single-family houses, mobile homes or cabins. Changes in seasonal apartment availability may also factor into the Fall and Winter figures.

Vacancy influences: The Ft. Wainwright Army 172nd Stryker Brigade was deployed to Iraq in Fall-Winter 2005-06, Fall-Winter 2008-09, and Spring-Summer 2011-12. Ft. Wainwright base housing privatized and contracted management to New Haven Communities in May 2009. Birchwood Apartments (400 units; 3-5 bdrm.) which were once on-base military housing was privatized and started public advertising May 2007 (included in this survey June 2007). Alpine Lodge (16 Units: efficiencies) entered the market as seasonal rental housing beginning 4th Quarter 2007. Lazelle Estates (37 Units:3-4 bedrooms) appeared on market survey September 2007. Aging Fairview Manor demolished 81 Units in 2008 and 30 Units in 2010. Weeks Field Estates has replaced them with 74 Units in 2009. In 2011, Weeks Field Estates will have completed 56 Units more. Walden Estates, once off-base military housing, privatized and placed 150 units; 3-5 bdms., on the market for sale or rent (27:duplexes; 23:4-plexes; 4:houses) in June 2010 (PHII).

^ Correction made to March 2011 data on June 24, 2011.

APARTMENT / MULTI-PLEX VACANCY RATES

Fairbanks North Star Borough
2007-2011



Housing

RENTAL HOUSING UNITS AVAILABLE ^

Fairbanks North Star Borough
2008-2011

	----- Apartments -----				----- Houses -----				Mobile Homes	Cabins	Total Rentals
	Eff.	1-BR	2-BR	3+BR	1-BR	2-BR	3-BR	4+BR			
2008											
March	43	132	117	190	10	12	18	10	11	27	570
June	39	72	105	241	9	15	39	4	5	20	549
September	68	277	183	241	8	16	36	19	17	49	914
December	91	266	262	291	10	19	26	21	11	31	1,028
2009											
March	59	257	234	233	5	14	15	13	3	18	851
June	36	198	138	149	7	10	12	16	7	21	594
September	35	67	57	51	8	9	3	12	5	18	265
December	56	106	81	64	9	6	16	16	7	34	395
2010											
March	38	95	93	74	5	5	16	6	NA	16	348
June	34	64	107	108	2	5	8	6	2	10	346
September	70	121	112	103	1	16	36	15	6	21	501
December	51	173	143	80	5	15	18	12	2	23	522
2011											
March ^	41	146	120	66	5	11	8	15	1	12	425
June	40	170	180	116	4	16	45	7	3	30	611
September	84	199	239	100	9	25	45	12	3	35	751
% Change											
2010-11	20%	64%	113%	-3%	800%	56%	25%	-20%	-50%	67%	50%
September											

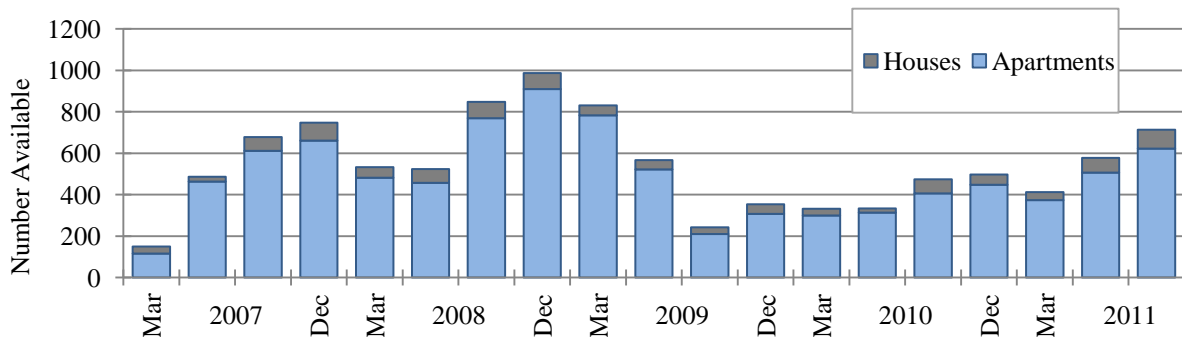
SOURCE: Community Research Center rental surveys, 2008-2011, including most major apartment complexes, *Fairbanks Daily News-Miner* advertisements, and <http://www.craigslist.com> during the week surrounding the 19th of March, June, September and December.

NOTE: Birchwood Apartments (400 units; 3-5 bdrm.) which were once on-base military housing was privatized and started public advertising May 2007 (included in this survey June 2007). Alpine Lodge (16 Units: efficiencies) entered the market as seasonal rental housing beginning 4th Quarter 2007. Lazelle Estates (37 Units:3-4 bedrooms) appeared on market survey September 2007. Aging Fairview Manor demolished 111 Units from 2008-2010. Weeks Field Estates has replaced them with 74 Units in 2009 and 56 Units more in 2011. Walden Estates, once off-base military housing, privatized and placed 150 units; 3-5 bdrms., on the market for sale or rent (27:duplexes; 23:4-plexes; 4:houses) in June 2010 (PHI). See *Vacancy Rates* footer for deployments.

^ Correction made to March 2011 data on June 24, 2011.

RENTAL HOUSING UNITS AVAILABLE

Fairbanks North Star Borough
2008-2011



Housing

AVERAGE MONTHLY RENTS FOR AVAILABLE HOUSING UNITS ^

Fairbanks North Star Borough
2008-2011

	----- Apartments -----				----- Houses -----				Mobile Homes	Cabins
	Eff.	1-BR	2-BR	3+ BR	1-BR	2-BR	3-BR	4+ BR		
2008										
March	\$574	\$759	\$1,024	\$1,662	\$900	\$1,137	\$1,419	\$1,650	\$814	\$492
June	\$620	\$791	\$1,019	\$1,807	\$922	\$1,195	\$1,525	\$1,837	\$748	\$491
September	\$741	\$849	\$1,071	\$1,763	\$890	\$1,248	\$1,518	\$2,314	\$962	\$518
December	\$713	\$836	\$1,023	\$1,736	\$827	\$1,038	\$1,437	\$2,447	\$866	\$563
2009										
March	\$678	\$862	\$1,035	\$1,751	\$1,008	\$1,218	\$1,476	\$2,470	\$898	\$578
June	\$674	\$857	\$1,018	\$1,705	\$1,254	\$1,129	\$1,584	\$2,227	\$760	\$558
September	\$835	\$898	\$1,078	\$1,844	\$931	\$1,138	\$1,333	\$2,353	\$824	\$527
December	\$760	\$867	\$1,047	\$1,852	\$1,552	\$1,111	\$1,555	\$2,230	\$821	\$505
2010										
March	\$617	\$817	\$1,028	\$1,763	\$960	\$1,489	\$1,516	\$2,073	NA	\$562
June	\$685	\$874	\$1,063	\$1,837	\$1,125	\$1,310	\$1,606	\$1,903	\$1,300	\$535
September	\$842	\$901	\$1,124	\$1,613	\$950	\$1,288	\$1,649	\$2,101	\$795	\$589
December	\$737	\$901	\$1,102	\$1,583	\$840	\$1,319	\$1,588	\$2,098	\$925	\$608
2011										
March ^	\$644	\$904	\$1,143	\$1,571	\$990	\$1,350	\$1,481	\$2,245	\$850	\$570
June	\$723	\$901	\$1,136	\$1,642	\$1,137	\$1,318	\$1,632	\$2,187	\$800	\$628
September	\$833	\$906	\$1,073	\$1,629	\$969	\$1,248	\$1,647	\$2,233	\$750	\$657
% Change										
2010-11	-1%	1%	-5%	1%	2%	-3%	0%	6%	-6%	12%
September										

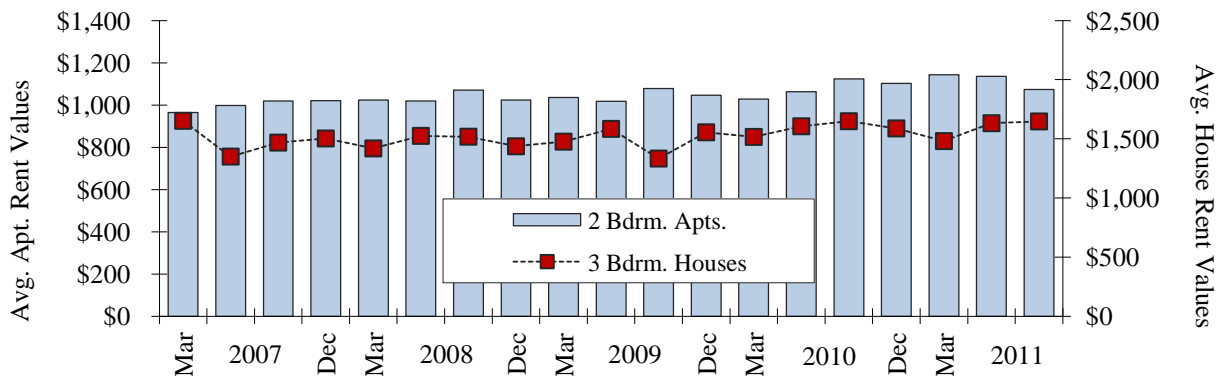
SOURCE: Community Research Center rental surveys, 2008-2011, including most major apartment complexes, *Fairbanks Daily News-Miner* advertisements, and <http://www.craigslist.com> during the week surrounding the 19th of March, June, September and December.

NOTE: Birchwood Apartments (400 units; 3-5 bdrm.) which were once on-base military housing was privatized and started public advertising May 2007 (included in this survey June 2007). Alpine Lodge (16 Units: efficiencies) entered the market as seasonal rental housing beginning 4th Quarter 2007. Lazelle Estates (37 Units: 3-4 bedrooms) appeared on market survey September 2007. Aging Fairview Manor demolished 111 Units from 2008-2010. Weeks Field Estates has replaced them with 74 Units in 2009 and 56 Units more in 2011. Walden Estates, once off-base military housing, privatized and placed 150 units; 3-5 bdrms., on the market for sale or rent (27:duplexes; 23:4-plexes; 4:houses) in June 2010 (PHII). See *Vacancy Rates* footer for deployments.

^ Correction made to data on June 24, 2011.

AVERAGE MONTHLY RENTS FOR AVAILABLE HOUSING UNITS

Fairbanks North Star Borough
2007-2011



Housing

RESIDENTIAL HOUSING SALES*

Fairbanks North Star Borough
2009-2011**

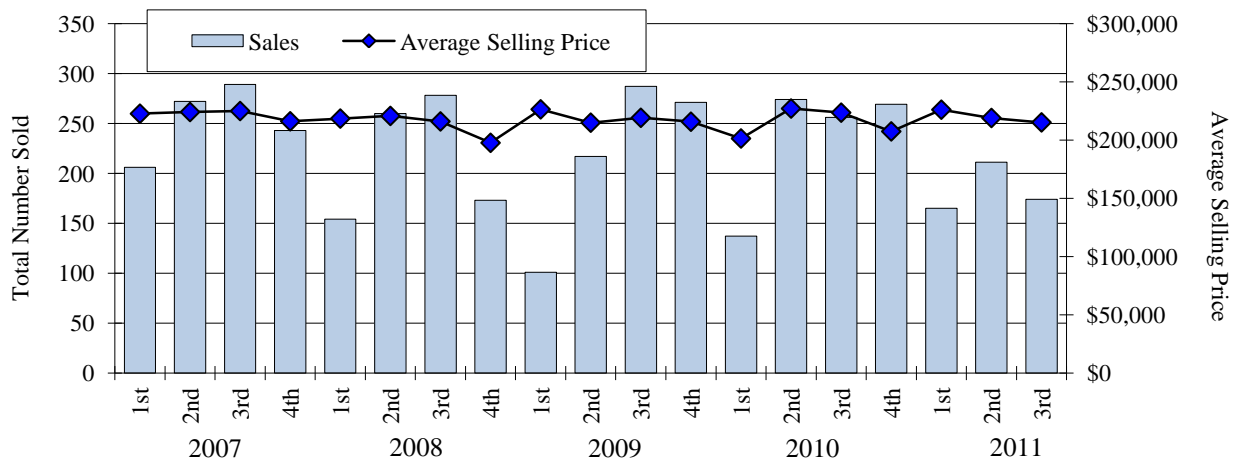
Quarter	1 Bedroom		2 Bedroom		3 Bedroom		4 Bedroom		5+ Bedroom		Total # Sold	Avg.Price
	#	Price	#	Price	#	Price	#	Price	#	Price		
2009												
1st Qtr.	7	\$152,834	14	\$158,295	52	\$224,299	21	\$266,933	7	\$329,360	101	\$226,343
2nd Qtr.	12	\$102,783	36	\$159,202	114	\$220,742	47	\$264,209	8	\$260,517	217	\$214,890
3rd Qtr.	16	\$95,618	47	\$165,116	157	\$225,087	53	\$271,545	14	\$275,528	287	\$219,088
4th Qtr.	11	\$107,581	57	\$160,385	142	\$226,106	50	\$255,550	11	\$295,627	271	\$215,726
2009 Total	46	\$109,055	154	\$161,362	465	\$224,245	171	\$264,285	40	\$287,474	876	\$217,845
2010												
1st Qtr.	4	\$77,125	22	\$145,470	74	\$199,165	30	\$249,569	7	\$263,971	137	\$201,328
2nd Qtr.	18	\$115,860	36	\$154,643	148	\$238,118	60	\$268,627	12	\$266,016	274	\$227,022
3rd Qtr.	20	\$129,520	36	\$156,949	137	\$228,472	50	\$285,938	13	\$259,723	256	\$223,494
4th Qtr.	17	\$107,794	45	\$136,580	134	\$214,027	58	\$256,721	15	\$282,959	269	\$207,407
2010 Total	59	\$115,540	139	\$147,941	493	\$223,043	198	\$266,623	47	\$269,378	936	\$216,659
2011												
1st Qtr.	5	\$107,300	30	\$161,399	89	\$232,332	35	\$270,897	6	\$293,258	165	\$226,042
2nd Qtr.	10	\$120,650	31	\$174,480	110	\$216,306	47	\$264,488	13	\$257,780	211	\$218,915
3rd Qtr.	7	\$102,785	30	\$166,077	93	\$212,814	35	\$271,040	9	\$272,744	174	\$215,141
2011 Total	22	\$111,932	91	\$167,397	292	\$220,078	117	\$268,365	28	\$270,192	550	\$219,859
% Chg. 3rd Qtr. 2010-11	-65%	-21%	-17%	6%	-32%	-7%	-30%	-5%	-31%	5%	-32%	-4%
% Chg. ANNUAL 2009-10	28%	6%	-10%	-8%	6%	-1%	16%	1%	18%	-6%	7%	-1%

SOURCE: Greater Fairbanks Board of Realtors and Alaska/Multiple Listing Service, Inc., personal and computer printout communications 2009-2011. Fairbanks Area MLS District data maintained by the Board or its MLS may not reflect all real estate activity in the market, and neither the Board nor its MLS guarantees or is in any way responsible for accuracy of the data.

* Does not include houses without bedrooms or sales of housing with zero lot lines.

RESIDENTIAL HOUSING SALES

Fairbanks North Star Borough
2007-2011, Quarterly Data



Housing

ANNUAL AVERAGE RESIDENTIAL HOUSING SALES*

Fairbanks North Star Borough
2000-2010

Year	1 Bedroom		2 Bedroom		3 Bedroom		4 Bedroom		5+ Bedroom		Total # Sold	Avg. Selling Price	% Chg fr prev yr	
	#	Price	#	Price	#	Price	#	Price	#	Price			Total # Sold	Avg. Price
2000	59	\$53,824	180	\$92,473	396	\$140,714	140	\$173,130	41	\$187,028	816	\$131,679	11.3%	2.7%
2001	61	\$63,591	233	\$94,299	432	\$150,035	162	\$176,423	47	\$188,765	935	\$137,025	14.6%	4.1%
2002	43	\$68,595	175	\$100,499	295	\$158,241	130	\$213,208	50	\$201,706	693	\$151,545	-25.9%	10.6%
2003	59	\$74,127	204	\$107,667	410	\$170,379	173	\$204,159	47	\$237,134	893	\$159,751	28.9%	5.4%
2004	65	\$93,531	164	\$120,336	441	\$178,733	147	\$214,663	39	\$240,959	856	\$170,080	-4.1%	6.5%
2005	55	\$95,452	160	\$135,749	439	\$207,847	163	\$244,873	38	\$266,373	855	\$196,785	-0.1%	15.7%
2006	64	\$107,793	158	\$148,952	554	\$220,860	194	\$262,791	46	\$288,256	1016	\$213,613	18.8%	8.6%
2007	58	\$107,211	176	\$170,842	541	\$228,359	194	\$271,421	41	\$288,301	1010	\$222,084	-0.6%	4.0%
2008	59	\$107,872	135	\$155,583	493	\$218,826	159	\$277,801	19	\$306,389	865	\$214,151	-14.4%	-3.6%
2009	46	\$109,055	154	\$161,362	465	\$224,245	171	\$264,285	40	\$287,474	876	\$217,845	1.3%	1.7%
2010	59	\$115,540	139	\$147,941	493	\$223,043	198	\$266,623	47	\$269,378	936	\$216,659	6.8%	-0.5%
Annual Average 2000-10	57	\$90,599	171	\$130,518	451	\$192,844	166	\$233,580	41	\$251,069	886	\$184,656		

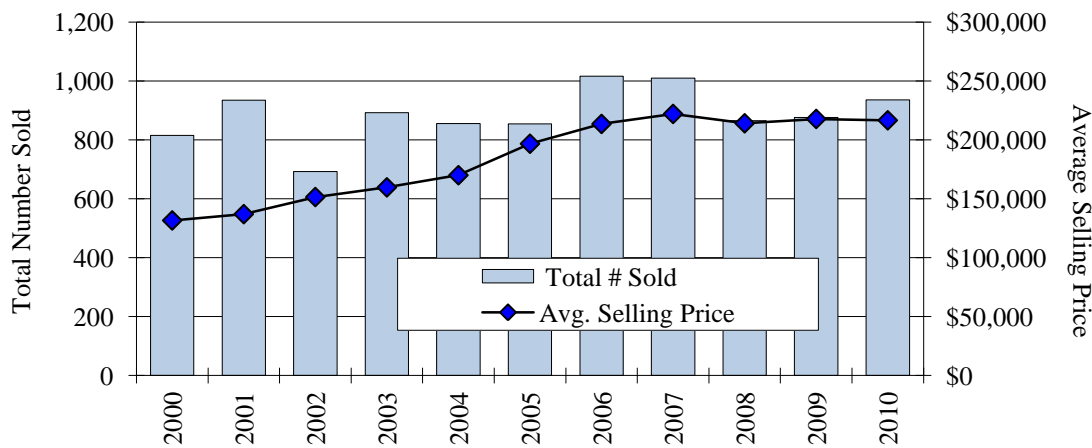
SOURCE: Greater Fairbanks Board of Realtors and Alaska/Multiple Listing Service, Inc., personal and computer printout communications 2000-2010. Fairbanks Area MLS District data maintained by the Board or its MLS may not reflect all real estate activity in the market, and neither the Board nor its MLS guarantees or is in any way responsible for accuracy of the data.

* Does not include houses without bedrooms or housing with zero lot lines.

** The Year-End Total number of sales includes the calculated average price of sales.

ANNUAL RESIDENTIAL HOUSING SALES*

Fairbanks North Star Borough
2000-2010



Housing

NEW STRUCTURES BY UNIT ANNUAL REPORT*

Fairbanks North Star Borough
2001-2011*

Year Built	City of Fairbanks				City of North Pole			
	SFR	Cabin	Multi Family	Fairbanks Total	SFR	Cabin	Multi Family	North Pole Total
2001	24		4	28	1		6	7
2002	42	1	4	47	4		2	6
2003	65		14	79	9			9
2004	61	1	4	66	37		14	51
2005	67	1	14	82	41	1		42
2006	69		14	83	37		2	39
2007	62	4	2	68	29		8	37
2008	14			14	11			11
2009	10	1		11	2			2
2010	16	8	60	84	9		2	11
2011*	6			6				0
Total 2001-2011	436	16	116	568	180	1	34	215
Average 2001-2011	39.6	2.7	14.5	51.6	18.0	1.0	5.7	19.5

Year Built	Balance of Borough				NEW CONSTRUCTION (All)			
	SFR	Cabin	Multi Family	FNSB Balance Total	SFR	Cabin	Multi Family	New Construction Total
2001	434	93	22	549	459	93	32	584
2002	488	109	34	631	534	110	40	684
2003	553	133	54	740	627	133	68	828
2004	669	129	102	900	767	130	120	1,017
2005	644	132	81	857	752	134	95	981
2006	601	149	91	841	707	149	107	963
2007	572	128	52	752	663	132	62	857
2008	288	128	15	431	313	128	15	456
2009	278	113	28	419	290	114	28	432
2010	266	94	26	386	291	102	88	481
2011*	45	9	4	58	51	9	4	64
Total 2001-2011	4,838	1,217	509	6,564	5,454	1,234	659	7,347
Average 2001-2011	439.8	110.6	46.3	596.7	495.8	112.2	59.9	667.9

SOURCE: Fairbanks North Star Borough Assessing Department, personal communications, 2006-2011.

NOTE: Assessing figures are collected and updated daily but stabilize one quarter after calendar year close and prior to May certification date. The term Multi-family is indicative of structures having more than one residential unit, such as a duplex, triplex, 4-plex, etc. Structures with Mother-in-law apartments are not usually regarded as multi-family. Single Family Residential (SFR) abbreviated above. SFR includes condominiums, and townhouses. In some instances, cabins and mobile homes are viewed as SFR (however, cabins are not necessarily year-round residential units, and mobile homes are not always located on a lot with a foundation). The mobile home classification is typically considered transient stock (because they can easily be relocated). The *by Structure* count was replaced with a "*by unit*" count beginning February, 2010.

* Current data supersedes previous figures reported. Current year data is only partial year data.

COST OF LIVING

ACCRA COST OF LIVING INDEX*

For Selected Cities
Third Quarter 2011

City	Composite Index 100%	Grocery		Utilities	Trans- portation	Health Care	Misc. Goods & Services
		Items 13.31%	Housing 29.27%				
West:							
Fairbanks, AK	138.6	130.6	141.9	229.2	110.3	140.9	119.1
Anchorage, AK	130.6	133.5	159.2	96.1	108.3	135.7	120.8
Kodiak, AK	129.1	149.5	125.3	160.9	128.6	132.1	114.2
Juneau, AK	140.2	131.6	178.6	168.1	107.4	148.2	109.7
Phoenix, AZ	94.5	99.8	87.5	98.8	100.0	103.6	94.5
San Diego, CA	130.8	106.3	189.1	112.8	107.3	111.6	104.1
Denver, CO	105.3	102.6	114.2	89.5	94.0	105.4	106.8
Boise, ID	94.2	96.8	81.1	93.5	102.7	103.3	101.4
Bozeman, MT	99.6	109.4	92.1	92.2	97.5	99.8	105.2
Farmington, NM	97.9	101.3	93.7	94.0	100.1	103.7	100.0
Seattle, WA	115.2	109.0	126.9	90.1	112.8	119.3	115.3
Cheyenne, WY	95.7	105.1	93.2	90.0	93.3	95.0	96.8
South:							
Miami, FL	108.3	107.7	114.0	93.5	106.8	111.1	108.3
Atlanta, GA	98.8	106.1	89.2	96.4	102.5	101.1	103.7
Lafayette, LA	99.2	92.6	113.5	88.0	104.5	86.6	92.7
Springfield, MO	90.3	95.6	74.6	88.6	93.7	95.3	100.8
Tulsa, OK	89.9	90.7	69.5	98.2	105.2	98.1	99.5
Memphis, TN	84.0	92.6	71.2	84.6	89.7	96.4	88.4
Dallas, TX	96.4	99.0	75.5	107.3	104.7	105.1	107.1
North Central:							
South Bend, IN	92.8	93.2	84.0	80.2	100.2	97.7	101.5
Kalamazoo, MI	87.2	94.9	69.0	97.4	98.2	96.0	92.7
Wausau, WI	94.8	101.6	85.8	103.4	97.8	101.7	95.6
Northeast:							
New York, NY	223.9	148.9	426.5	131.4	127.5	127.1	144.4
Philadelphia, PA	123.8	123.2	139.8	126.0	105.9	102.9	117.3
Boston, MA	137.2	117.8	157.8	146.6	110.6	120.9	134.0
Raleigh, NC	93.3	100.9	75.0	104.7	97.3	107.9	99.8
Richmond, VA	99.2	103.0	89.3	106.5	102.5	109.0	102.0
Avg. of 309 Urban Areas	100.0	100.0	100.0	100.0	100.0	100.0	100.0

SOURCE: ACCRA (American Chamber of Commerce Researchers Association), "ACCRA Cost of Living Index," Third Quarter 2011, October 2011.

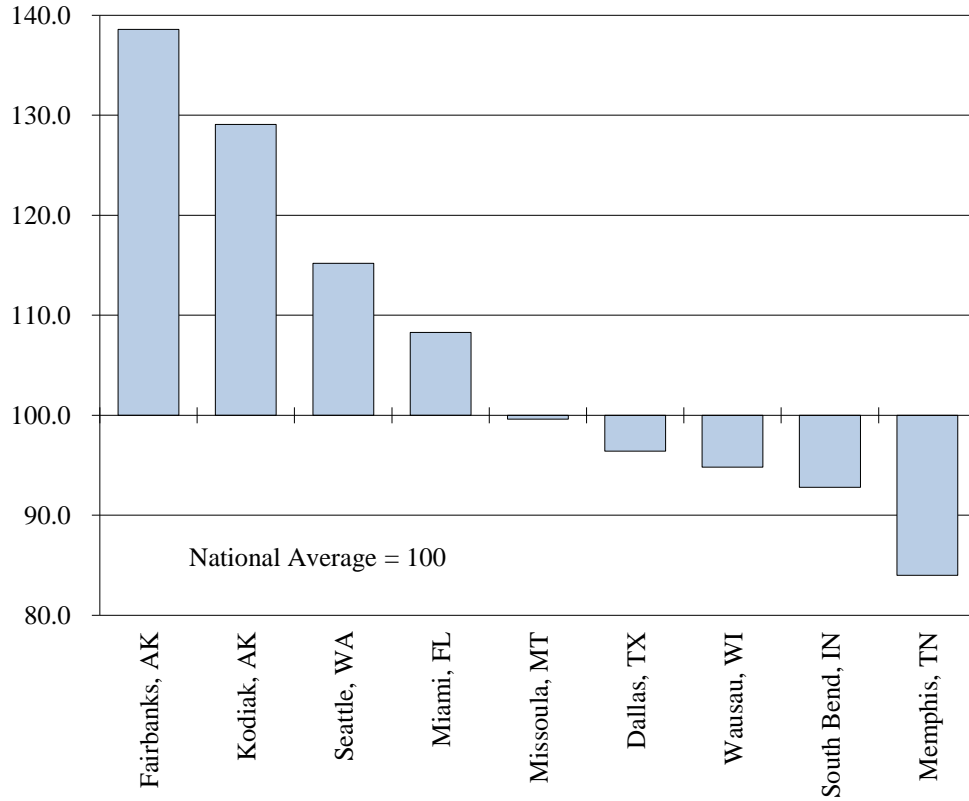
NOTE: The ACCRA Cost of Living Index **does not measure inflation** (price change over time). Because each quarterly report is a separate comparison of prices at a single point in time, and because both the number and the mix of participants changes from one quarter to the next, Index data from different quarters cannot be compared. For inflation data you will need to use the CPI-U (Consumer Price Index-All Urban Consumers).

* Item percentages change so please watch for current percentages.

Cost of Living

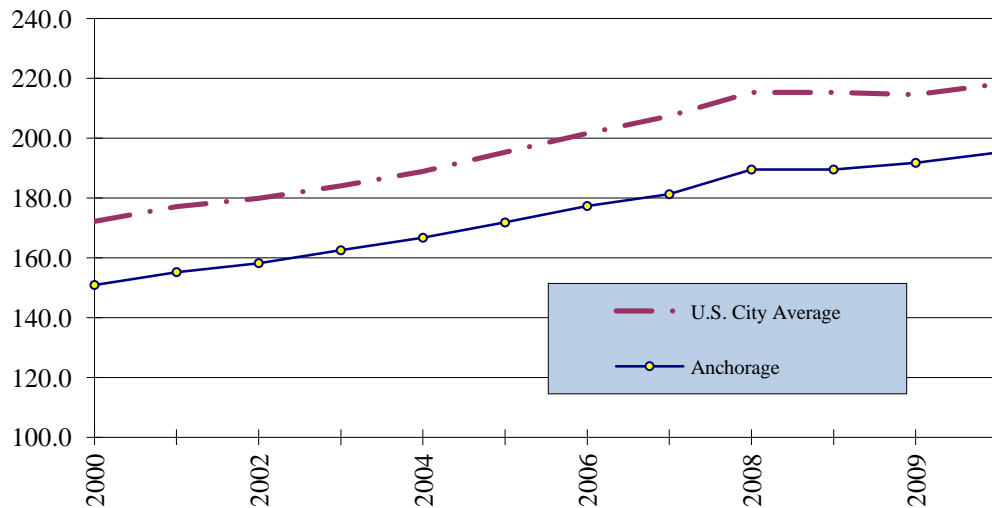
ACCRA COST OF LIVING INDEX

For Selected Cities
Third Quarter 2011



CONSUMER PRICE INDEX-U FOR ALL ITEMS

Anchorage & U.S. City Annual Average
2000-2010



Cost of Living

CONSUMER PRICE INDEX-U*^

Anchorage, Alaska
2006-2011

	2006	2007	2008	2009	2010	2011	% Change 2010-11
Jan. - June Average	176.7	179.394	187.659	190.032	194.834	200.278	2.8%
July - Dec. Average	177.9	183.080	191.335	193.456	195.455		
Annual Average	177.3	181.237	189.497	191.744	195.144		
% Change from Previous Year	3.2%	2.2%	4.6%	1.2%	1.8%		

SOURCE: U.S. Department of Labor, Bureau of Labor Statistics, *Consumer Price Indexes Pacific Cities and U.S. City Average*, not seasonally adjusted, 2006-2011.

NOTE: 1982-1984 = 100

* For All Urban Consumers.

CONSUMER PRICE INDEX-U* FOR ALL ITEMS

U.S. City Average
2006-2011

	2006	2007	2008	2009	2010	2011	% Change 2010-11
January	198.3	202.4	211.080	211.143	216.687	220.223	1.6%
February	198.7	203.5	211.693	212.193	216.741	221.309	2.1%
March	199.8	205.4	213.528	212.709	217.631	223.467	2.7%
April	201.5	206.7	214.823	213.240	218.009	224.906	3.2%
May	202.5	207.9	216.632	213.856	218.178	225.964	3.6%
June	202.9	208.4	218.815	215.693	217.965	225.722	3.6%
July	203.5	208.3	219.964	215.351	218.011	225.922	3.6%
August	203.9	207.9	219.086	215.834	218.312	226.545	3.8%
September	202.9	208.5	218.783	215.969	218.439	226.889	3.9%
October	201.8	208.9	216.573	216.177	218.711		
November	201.5	210.2	212.425	216.330	218.803		
December	201.8	210.0	210.228	215.949	219.179		
Annual Average	201.6	207.3	215.303	214.537	218.056		
% Change from Previous Year	3.2%	2.8%	3.8%	-0.4%	1.6%		

SOURCE: U.S. Department of Labor, Bureau of Labor Statistics, *Consumer Price Indexes Pacific Cities and U.S. City Average*, not seasonally adjusted, 2006-2011.

NOTE: 1982-1984=100; All items.

* For All Urban Consumers.

Cost of Living

COST OF FOOD AT HOME FOR A WEEK

Selected Alaskan Communities

June 2011

	Anchorage	Bethel	Cordova	Delta Jct	Fairbanks	Homer	Nome
Family of 2							
19-50 years	\$85.39	\$168.94	\$132.15	\$112.13	\$82.25	\$99.81	\$153.70
51-70 years	\$81.14	\$160.54	\$125.58	\$106.56	\$78.16	\$94.85	\$146.06
Family of 4 with:							
Children, 2-5 years	\$124.39	\$246.11	\$192.51	\$163.35	\$119.82	\$145.41	\$223.91
Children, 6-11 years	\$142.68	\$282.30	\$220.82	\$187.37	\$137.44	\$166.79	\$256.83
Individuals							
Children:							
1 years	\$21.22	\$41.99	\$32.84	\$27.87	\$20.44	\$24.81	\$38.20
2-3 years	\$22.84	\$45.18	\$35.34	\$29.99	\$22.00	\$26.70	\$41.11
4-5 years	\$23.95	\$47.38	\$37.06	\$31.45	\$23.07	\$28.00	\$43.11
6-8 years	\$30.31	\$59.98	\$46.92	\$39.81	\$29.20	\$35.44	\$54.57
9-11 years	\$34.76	\$68.78	\$53.80	\$45.65	\$33.48	\$40.63	\$62.57
Males:							
12-13 years	\$36.98	\$73.17	\$57.24	\$48.57	\$35.63	\$43.23	\$66.57
14-18 years	\$38.40	\$75.97	\$59.43	\$50.43	\$36.99	\$44.89	\$69.12
19-50 years	\$41.03	\$81.17	\$63.49	\$53.88	\$39.52	\$47.96	\$73.85
51-70 years	\$37.59	\$74.37	\$58.18	\$49.36	\$36.21	\$43.94	\$67.66
71+ years	\$37.69	\$74.57	\$58.33	\$49.50	\$36.31	\$44.06	\$67.85
Females:							
12-13 years	\$37.08	\$73.37	\$57.39	\$48.70	\$35.72	\$43.35	\$66.75
14-18 years	\$36.68	\$72.57	\$56.77	\$48.17	\$35.33	\$42.88	\$66.03
19-50 years	\$36.58	\$72.37	\$56.61	\$48.04	\$35.24	\$42.76	\$65.84
51-70 years	\$36.18	\$71.57	\$55.99	\$47.51	\$34.85	\$42.29	\$65.12
71+ years	\$35.47	\$70.18	\$54.89	\$46.58	\$34.17	\$41.46	\$63.84

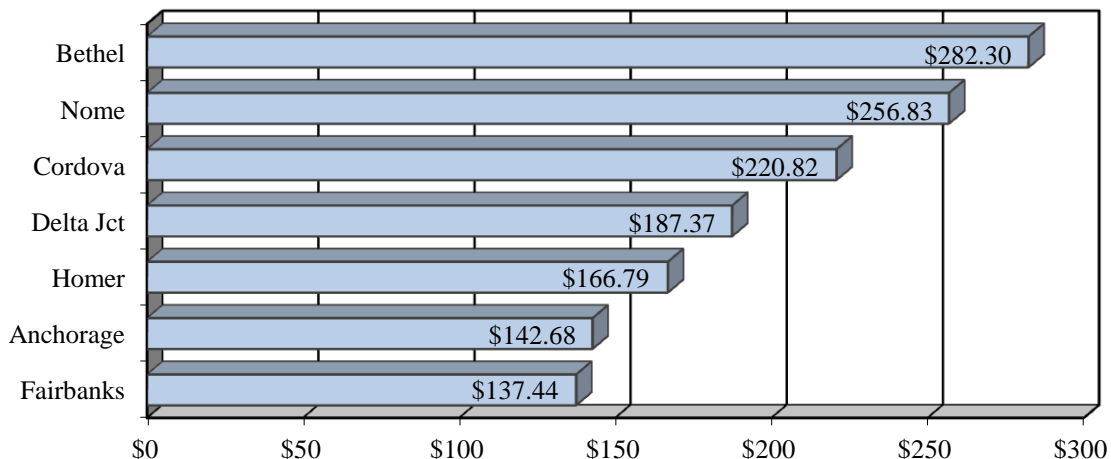
SOURCE: Alaska Cooperative Extension Service, UAF, "Cost of Food at Home for a Week," June 2011.

NOTE: There will be a 3 month lag in this report due to press timelines.

COST OF FOOD AT HOME FOR A WEEK FAMILY OF 4 WITH CHILDREN AGE 6-11 YEARS

Selected Alaskan Communities

June 2011



Cost of Living

NATURAL GAS CUSTOMERS

Fairbanks North Star Borough
1999-2011

Year	Residential	----- Commercial -----			Total	% Change From Prev. Yr.
		Small	Large	Subtotal		
1999	31	41	2	43	74	NA
2000	68	103	3	106	174	135.1%
2001	152	205	10	215	367	110.9%
2002	195	277	11	288	483	31.6%
2003	231	308	18	326	557	15.3%
2004	290	385	19	404	694	24.6%
2005	341	379	19	398	739	6.5%
2006	355	510	21	531	886	19.9%
2007	463	591	26	617	1,080	21.9%
2008	463	611	29	640	1,103	2.1%
2009	441	643	30	673	1,114	1.0%
2010	463	624	31	655	1,118	0.4%
2011	463	622	34	656	1,119	0.1%

SOURCE: Fairbanks Natural Gas, LLC., personal communications 1999-2011.

NOTE: Current data supercede previous figures reported.

Adjustment- percent change column formula carried incorrectly (2010-2011), correction made October 2011.

NATURAL GAS PRICES

Fairbanks North Star Borough
1999-2011*

Year	Residential	----- Commercial -----		Annual Average	% Change From Prev. Yr.
		Small	Large		
1999	\$6.96	\$6.78	\$6.66	\$6.72	0.0%
2000	\$6.96	\$6.78	\$6.66	\$6.72	0.0%
2001	\$7.59	\$7.41	\$7.29	\$7.35	9.4%
2002	\$8.56	\$8.38	\$8.26	\$8.32	13.2%
2003	\$8.56	\$8.38	\$8.26	\$8.32	0.0%
2004	\$9.81	\$9.63	\$9.51	\$9.57	15.0%
2005	\$11.28	\$11.07	\$10.94	\$11.01	15.0%
2006	\$12.97	\$12.73	\$12.58	\$12.66	15.0%
2007	\$21.23	\$20.83	\$20.60	\$20.72	63.7%
2008	\$23.35	\$22.91	\$22.66	\$22.79	10.0%
2009	\$23.35	\$22.91	\$22.66	\$22.79	0.0%
2010	\$23.35	\$22.91	\$22.66	\$22.79	0.0%
2011	\$23.35	\$22.91	\$22.66	\$22.79	0.0%

SOURCE: Fairbanks Natural Gas, LLC., personal communications 1999-2010.

NOTE: Price listed per Mcf (1,000 cubic feet) or 1 MMBtu's (1,000,000 btu's). FNG supplier changed in October 2006. Two steps in rate change occurred between October 2006 and May 2007 due to new supplier costs.

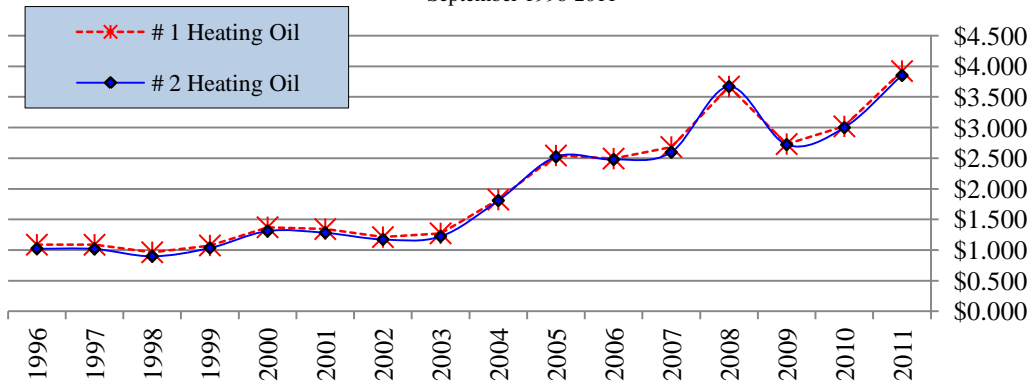
* 1999-2000 gas rates remained the same.

Adjustment- percent change column formula carried incorrectly (2009-2010), correction made October 2011.

Cost of Living

AVERAGE HEATING OIL PRICES

Fairbanks North Star Borough
September 1996-2011



HEATING OIL PRICES

Fairbanks North Star Borough
September 1986-2011

	#1 Fuel Oil		#2 Fuel Oil	
	Average	Range (\$)	Average	Range (\$)
1986	\$0.778	(0.750-0.795)	\$0.728	(0.715-0.755)
1987	\$0.918	(0.918-0.970)	\$0.875	(0.815-0.920)
1988	\$0.880	(0.800-0.922)	\$0.847	(0.770-0.895)
1989	\$0.957	(0.900-0.992)	\$0.911	(0.860-0.952)
1990	\$1.179	(1.110-1.222)	\$1.140	(1.070-1.200)
1991	\$0.927	(0.880-0.977)	\$0.901	(0.850-0.940)
1992	\$0.975	(0.915-1.037)	\$0.941	(0.895-0.980)
1993	\$0.999	(0.975-1.045)	\$0.939	(0.918-0.970)
1994	\$0.961	(0.930-1.015)	\$0.903	(0.880-0.945)
1995	\$0.955	(0.900-1.040)	\$0.888	(0.830-0.960)
1996	\$1.088	(1.040-1.155)	\$1.023	(0.970-1.068)
1997	\$1.087	(1.050-1.120)	\$1.019	(0.970-1.060)
1998	\$0.964	(0.940-1.000)	\$0.900	(0.880-0.930)
1999	\$1.075	(1.030-1.120)	\$1.035	(1.000-1.050)
2000	\$1.372	(1.330-1.400)	\$1.312	(1.270-1.360)
2001	\$1.343	(1.300-1.380)	\$1.283	(1.260-1.310)
2002	\$1.212	(1.175-1.310)	\$1.175	(1.110-1.280)
2003	\$1.273	(1.220-1.320)	\$1.224	(1.200-1.260)
2004	\$1.824	(1.770-1.870)	\$1.809	(1.770-1.840)
2005	\$2.544	(2.500-2.610)	\$2.523	(2.480-2.560)
2006	\$2.494	(2.390-2.580)	\$2.479	(2.380-2.550)
2007	\$2.683	(2.640-2.730)	\$2.598	(2.540-2.640)
2008	\$3.670	(3.610-3.790)	\$3.670	(3.630-3.770)
2009	\$2.731	(2.680-2.750)	\$2.722	(2.690-2.740)
2010	\$3.020	(2.980-3.060)	\$3.000	(2.960-3.060)
2011	\$3.922	(3.890-3.950)	\$3.852	(3.820-3.880)

SOURCE: Fairbanks North Star Borough, Community Research Center surveys, 1986-2011.

NOTE: Discounts of several cents per gallon may be available from retailers depending on method and timing of payment. Prices based on automatic delivery of 500 gallons of heating oil, without early payment discount.

Cost of Living

RESIDENTIAL HEATING FUEL COMPARISON

Fairbanks, Alaska
November 2011

Fuel (see notes below)	Avg Price	Per Unit	Gross Heat (BTU)	Heater Efficiency	\$/100,000 BTU's of Useful Heat	Useful BTU's per \$1.00
Electricity (100% eff.)	\$0.1976	/kWh	3,413	100%	\$5.790	17,272
District Hot Water Heat	\$17.9300	/mmbtu	1,000,000	100%	\$1.793	55,772
District Steam Heat	\$10.5000	/1,000 lb	1,066,000	100%	\$0.985	101,524
Fuel oil #2 (85% eff.)	\$3.8525	/gal	135,000	85%	\$3.357	29,786
Natural gas (85% eff.)	\$23.3500	/mcf	1,010,000	85%	\$2.720	36,767
Propane (85% eff.)	\$4.0700	/gal	91,333	85%	\$5.243	19,074
Wood, pellet (85% eff.)	\$295.0000	/ton	16,000,000	85%	\$2.169	46,102
Wood, birch (70% eff.)	\$250.0000	/cord	20,500,000	70%	\$1.742	57,400
Wood, spruce (70% eff.)	\$250.0000	/cord	15,000,000	70%	\$2.381	42,000
Coal, stoker	\$110.0000	/ton	15,200,000	55%	\$1.316	76,000
Electricity (distributed): PRICE includes rate, customer charge, RCA charge, cost of fuel adjustment charge.				0.293 watt hours = (1) BTU	\$0.198	per kWh
Hot water				per million BTUs	\$17.930	hot water
Steam				per 1,000 lbs p/month	\$10.500	steam heat
Wood, according to a table on the energy content of Interior Alaska trees prepared by George Sampson, a former Institute of Northern Forestry research forester: Paper birch provides 25.4 million BTU per cord; tamarack provides 24.8 million BTU per cord.				varies: p/ton; p/cord	\$250.000	per cord of wood
Fuel oil (common: "60% #2, 40% #1 blend" or "-15, #2") (delivered by truck)				135,000 BTU/gal	\$3.853	per gal
Natural gas (liquefied, trucked to Fairbanks, delivered by pipeline). NOTE: an average home in Fairbanks may use 250 CCF or 25,000 cubic feet (cf) of gas in a typical January, when natural gas is used for heating only. PRICE includes rate, customer charge, RCA.				1,010 BTU/cf	\$2.335	per 100 cubic feet (CCF)
Propane (delivered by truck to homes)				91,333 BTU/gal	\$4.070	per gal
Coal, delivered to downtown				avg: \$90/ton		

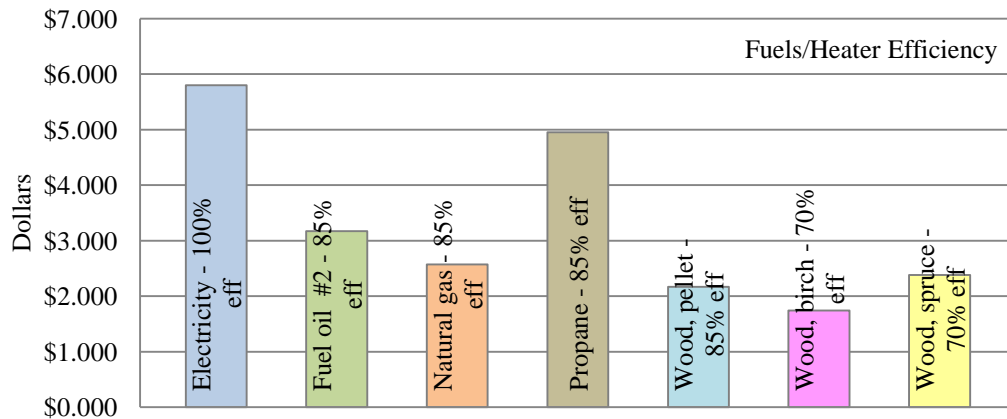
SOURCE: Golden Valley Electric Association, Inc. (GVEA), LEED Accredited Professional Energy End Use Specialist and SNAP Program Tech, Todd Hoener, *Heating Fuel Comparison, November 2011*, personal communication, 2011.

NOTE: A British Thermal Unit (BTU) is the amount of heat energy needed to raise the temperature of one pound of water by one degree F. This is the standard measurement used to state the amount of energy that a fuel has as well as the amount of output of any heat generating device.

A common index of the cost of heat is "dollars per 100,000 BTUs of useful heat." In order to calculate useful heat (heat actually delivered to

COMPARISON PRICE PER 100,000 BTUs OF USEFUL HEAT

Fairbanks, Alaska
November 2011



POPULATION & SOCIAL CONDITIONS

POPULATION COUNTS & ESTIMATES**

Fairbanks, North Pole and the Fairbanks North Star Borough
2000-2010, Selected Years

		U.S. Census Bureau (1)	Ak. Department of Labor (2)*	Ak. Dept of Commerce (3)
F A I R B A N K S	2000	30,180	30,215	30,224
	2001	30,978	29,611	29,558
	2002	31,542	29,941	29,670
	2003	31,733	29,156	29,486
	2004	33,200	30,402	30,083
	2005	33,900	31,478	31,071
	2006	33,884	30,580	30,552
	2007	35,185	32,266	30,552
	2008	35,199	31,694	30,367
	2009	35,252	32,346	32,506
	2010	31,535	31,535	31,535
N O R T H P O L E	2000	1,568	1,570	1,570
	2001	1,612	1,474	1,500
	2002	1,661	1,612	1,683
	2003	1,713	1,617	1,646
	2004	1,765	1,548	1,532
	2005	1,917	1,624	1,599
	2006	2,003	1,675	1,710
	2007	2,177	2,013	1,710
	2008	2,206	2,233	2,099
	2009	2,226	2,199	2,200
	2010	2,117	2,117	2,117
F N S B	2000	82,769	82,840	82,840
	2001	85,233	83,872	83,530
	2002	87,329	85,860	84,791
	2003	89,198	83,714	82,214
	2004	92,301	87,555	84,979
	2005	94,451	90,381	87,608
	2006	94,803	90,953	96,888
	2007	97,952	95,354	96,888
	2008	98,351	96,423	97,970
	2009	98,660	96,631	98,660
	2010	97,581	97,581	97,581

SOURCE: (1) U.S. Census Bureau, Population Division, July 1st estimates. Table 1: *Annual Estimates of the Resident Population for Counties in Alaska: April 1, 2000 to July 1, 2009*, March 2010. Table 4: *Annual Estimates of the Resident Population for Incorporated Places in Alaska: April 1, 2000 to July 1, 2009*, September 2010. Reflecting Census 2000 and Census 2010 data. Census website: <http://www.census.gov>.

(2) Alaska Department of Labor and Workforce Development, Research and Analysis Section, and US Census Bureau. Reflecting (*) Preliminary Intercensal 2000-2009, and 2010 Census. Vintage 2010. All numbers are based on 2010 Census geography. ADOL website: <http://almis.labor.state.ak.us>.

(3) Alaska Department of Commerce, Community and Economic Development (DCCED), Division of Community and Regional Affairs, certified 2009 municipal population, June 1, 2010. DCCED Certified numbers may vary from ADOL population estimates as a result of the *Population Estimate Appeal* process available to incorporated communities on a yearly basis. Once certified, DCCED numbers may be applied for two consecutive calendar years. DCCED website: http://www.commerce.state.ak.us/dca/commdb/CF_COMDB.htm.state.ak.us.

NOTE: The FNSB numbers include population for all communities within the Borough plus Fort Wainwright Army Base and Eielson Air Force Base.

** U.S. Census estimated numbers may be revised annually. Alaska Department of Labor and Workforce Development numbers are provisional.

Population and Social Conditions

MILITARY POPULATION

Ft. Wainwright Army Base*[^]

By Federal Fiscal Year Quarter: 2009-2011

Ft. Wainwright Army Base (FWA)	FFY Qtr.	FFY Months	Military Active Duty Personnel	Military Families	Total	% Change (same Qtr.) fr/prev/yr
2009	1	Oct-Dec	7,186	11,940	19,126	-
	2	Jan-Mar	7,427	8,422	15,849	-
	3	Apr-Jun	7,298	8,670	15,968	-
	4	Jul-Sept	6,921	7,841	14,762	-
2010	1	Oct-Dec	5,812	7,967	13,779	-28.0%
	2	Jan-Mar	6,147	8,697	14,844	-6.3%
	3	Apr-Jun	6,466	8,275	14,740	-7.7%
	4	Jul-Sept	6,996	8,517	15,513	5.1%
2011	1	Oct-Dec	7,358	8,858	16,216	17.7%
	2	Jan-Mar	7,549	9,097	16,646	10.9%
	3	Apr-Jun	6,921	7,841	14,762	0.1%
	4	Jul-Sept	na	na	0	-

SOURCE: Fort Wainwright Army Base (FWA), Plans, Analysis and Integration Office (PAIO), 2011.

NOTE: Beginning in September 2011 new reporting utilizing FWA "actual" population figures. Using Federal Fiscal Year (FFY) reporting periods: FFY1Q: Oct-Dec; FFY2Q: Jan-Mar; FFY3Q: Apr-Jun; FFY4Q: Jul-Sept.

[^] Prior to deployment a build up of replacements occurs.

* Does not include contract civilian positions or BLM.

MILITARY POPULATION

Eielson Air Force Base*

By Federal Fiscal Year Quarter: 2009-2011

Eielson Air Force Base (EAFB)	FFY Qtr.	FFY Months	Military Active Duty Personnel	Military Families	Total	% Change (same Qtr.) fr/prev/yr
2009	1	Oct-Dec	2,039	3,103	5,142	-
	2	Jan-Mar	2,023	3,312	5,335	3.7%
	3	Apr-Jun	2,007	3,343	5,350	4.8%
	4	Jul-Sept	1,926	3,177	5,103	0.4%
2010	1	Oct-Dec	1,867	3,071	4,938	-4.0%
	2	Jan-Mar	1,886	3,036	4,922	-7.7%
	3	Apr-Jun	1,955	3,090	5,045	-5.7%
	4	Jul-Sept	1,887	2,929	4,816	-6.1%
2011	1	Oct-Dec	1,909	2,974	4,883	-2.5%
	2	Jan-Mar	1,912	2,998	4,910	0.3%
	3	Apr-Jun	na	na	0	-
	4	Jul-Sept	1,803	2,871	4,674	-2.9%

SOURCE: ALCOM, Alaskan Command, 2009-2011.

NOTE: June 2009 ALCOM used the military Defense Enrollment Eligibility Reporting System (DEERS) which uses the military definition of a "dependent" associated with the uniformed services members (sponsors). Since these DEERS persons may be anywhere in the country, it grossly inflates the number of dependents at the Alaska base. Beginning in November 2011 new reporting utilizing EAFB "actual" population figures. Using Federal Fiscal Year (FFY) reporting periods: FFY1Q: Oct-Dec; FFY2Q: Jan-Mar; FFY3Q: Apr-Jun; FFY4Q: Jul-Sept.

na not available at press time.

* Does not include contract civilian positions or BLM.

Population and Social Conditions

ALASKA TEMPORARY ASSISTANCE PROGRAM (ATAP)

Fairbanks North Star Borough
2007-2011

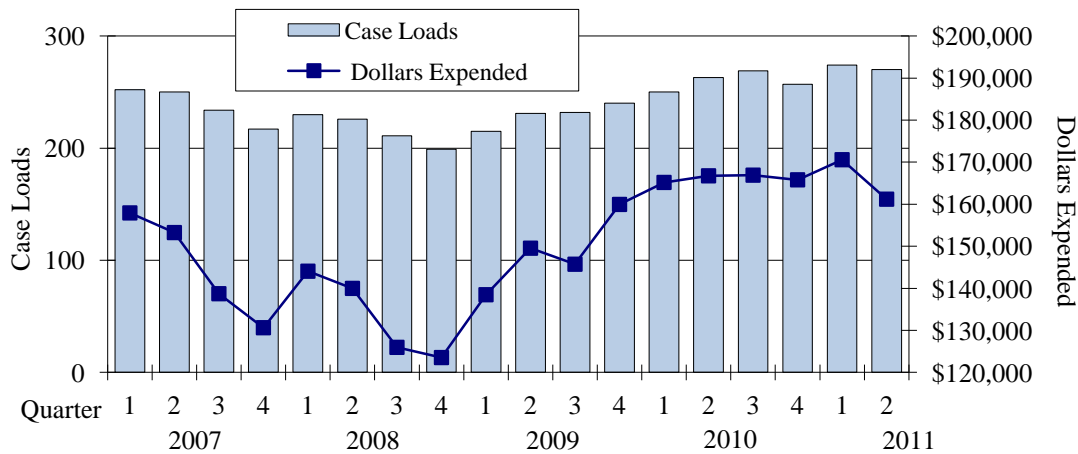
Yr/Qtr	Average Monthly		
	Case Loads	Dollars Expended	
2007	1	252	\$157,934
	2	250	\$153,260
	3	234	\$138,718
	4	217	\$130,636
2008	1	230	\$144,074
	2	226	\$139,985
	3	211	\$125,966
	4	199	\$123,535
2009	1	215	\$138,476
	2	231	\$149,546
	3	232	\$145,730
	4	240	\$159,952
2010	1	250	\$165,183
	2	263	\$166,753
	3	269	\$166,912
	4	257	\$165,805
2011	1	274	\$170,585
	2	270	\$161,197

SOURCE: Alaska Department of Health and Social Services, Division of Public Assistance, personal communications, 2007-2011.

NOTE: Aid to Families With Dependent Children was renamed ATAP in 2003.

ALASKA TEMPORARY ASSISTANCE PROGRAM (ATAP)

Fairbanks North Star Borough
Monthly Average
2007-2011



Population and Social Conditions

ADULT PUBLIC ASSISTANCE

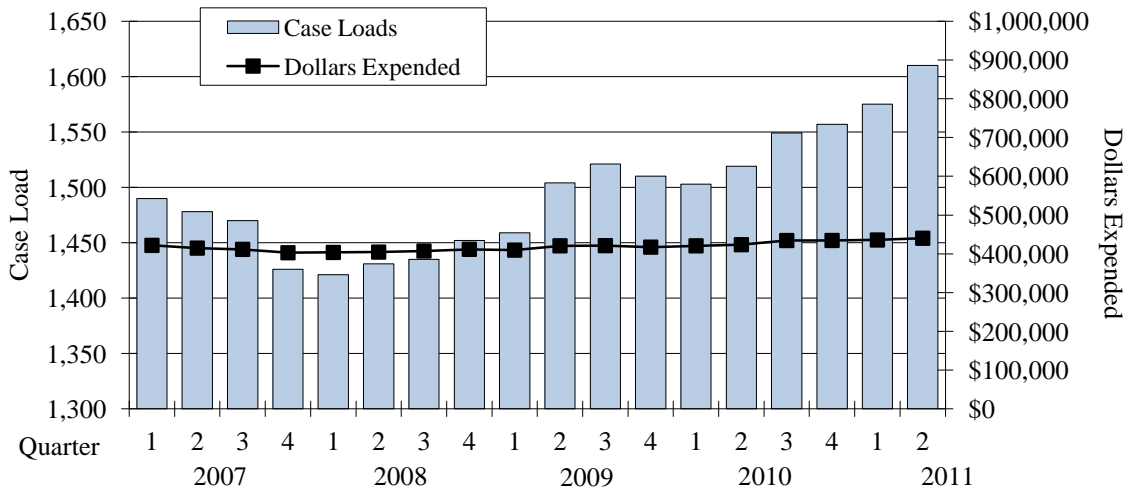
Fairbanks North Star Borough
2007-2011

	Yr/Qtr	Average Monthly	
		Case Loads	Dollars Expended
2007	1	1,490	\$421,733
	2	1,478	\$414,715
	3	1,470	\$411,484
	4	1,426	\$402,760
2008	1	1,421	\$403,548
	2	1,431	\$404,437
	3	1,435	\$407,189
	4	1,452	\$411,545
2009	1	1,459	\$409,486
	2	1,504	\$420,670
	3	1,521	\$421,041
	4	1,510	\$417,208
2010	1	1,503	\$420,570
	2	1,519	\$423,528
	3	1,549	\$434,298
	4	1,557	\$434,434
2011	1	1,575	\$435,685
	2	1,610	\$440,107

SOURCE: Alaska Department of Health and Social Services, Division of Public Assistance, personal communications 2007-2011.

ADULT PUBLIC ASSISTANCE

Fairbanks North Star Borough
Monthly Average
2007-2011



Population and Social Conditions

FOOD STAMPS

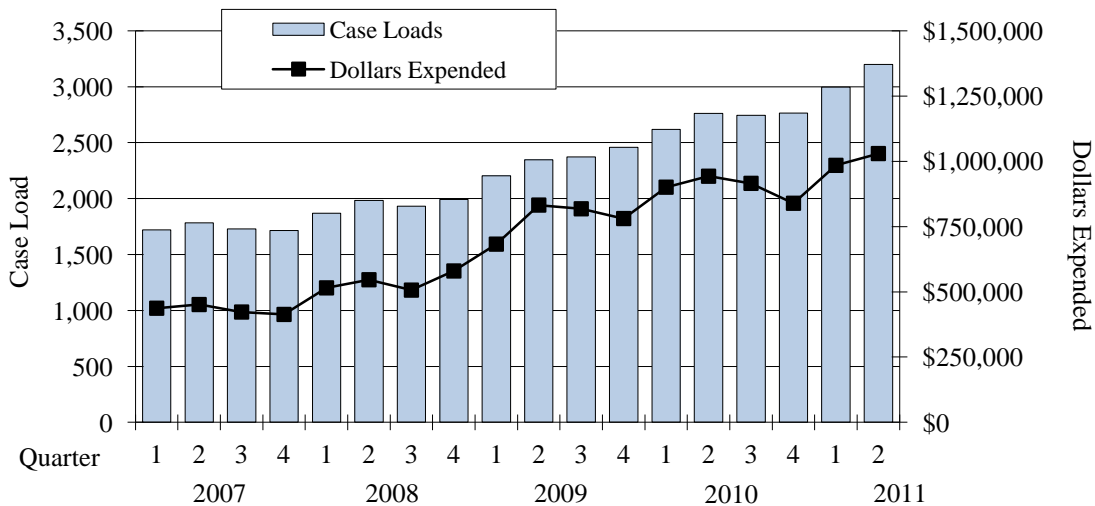
Fairbanks North Star Borough
2007-2011

Yr/Qtr	Average Monthly		
	Case Loads	Dollars Expended	
2007	1	1,719	\$437,114
	2	1,782	\$451,308
	3	1,730	\$422,544
	4	1,716	\$413,360
2008	1	1,869	\$515,153
	2	1,983	\$546,322
	3	1,931	\$506,526
	4	1,991	\$579,936
2009	1	2,204	\$682,667
	2	2,348	\$832,323
	3	2,372	\$818,170
	4	2,459	\$780,724
2010	1	2,619	\$900,899
	2	2,761	\$942,884
	3	2,745	\$915,556
	4	2,765	\$839,323
2011	1	2,996	\$984,559
	2	3,200	\$1,029,679

SOURCE: Alaska Department of Health and Social Services, Division of Public Assistance, personal communications 2007-2011.

FOOD STAMPS

Fairbanks North Star Borough
Monthly Average
2007-2011



Population and Social Conditions

GENERAL RELIEF

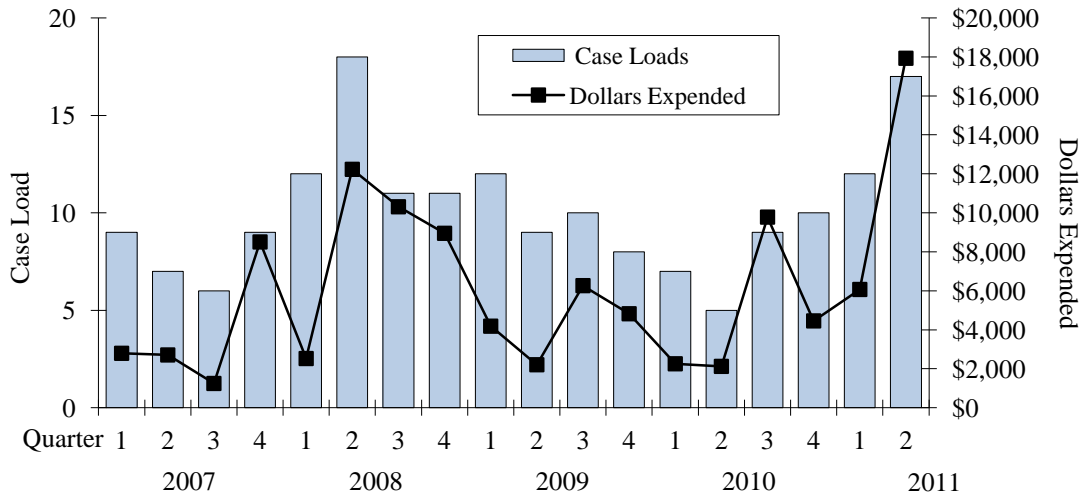
Fairbanks North Star Borough
2007-2011

Yr/Qtr	Average Monthly		
	Case Loads	Dollars Expended	
2007	1	9	\$2,792
	2	7	\$2,708
	3	6	\$1,245
	4	9	\$8,506
2008	1	12	\$2,525
	2	18	\$12,231
	3	11	\$10,310
	4	11	\$8,949
2009	1	12	\$4,184
	2	9	\$2,205
	3	10	\$6,263
	4	8	\$4,822
2010	1	7	\$2,255
	2	5	\$2,122
	3	9	\$9,779
	4	10	\$4,455
2011	1	12	\$6,068
	2	17	\$17,930

SOURCE: Alaska Department of Health and Social Services, Division of Public Assistance, personal communications 2007-2011.

GENERAL RELIEF

Fairbanks North Star Borough
Monthly Average
2007-2011



Population and Social Conditions

REGISTERED VOTERS BY PARTY AFFILIATION

Fairbanks North Star Borough
September 2011

	-----By District-----						Total
	7	8	9	10	11	12*	
Alaskan Independence Party	480	276	350	291	450	107	1,954
Alaska Democrat Party	1,950	2,140	1,984	1,892	1,326	420	9,712
Alaska Libertarian Party	112	95	75	78	99	15	474
Alaska Republican Party	4,001	2,800	2,733	3,046	5,762	1,616	19,958
Non-Partisan	2,840	2,403	1,887	1,458	2,130	424	11,142
Undeclared	5,880	4,807	4,174	3,912	5,653	1,148	25,574
Alaska Constitution Party [^]	0	1	1	0	0	1	3
Green Party of Alaska	112	143	37	34	27	2	355
Veterans Party of Alaska [^]	14	7	16	20	15	4	76
TOTAL	15,389	12,672	11,257	10,731	15,462	3,737	69,248

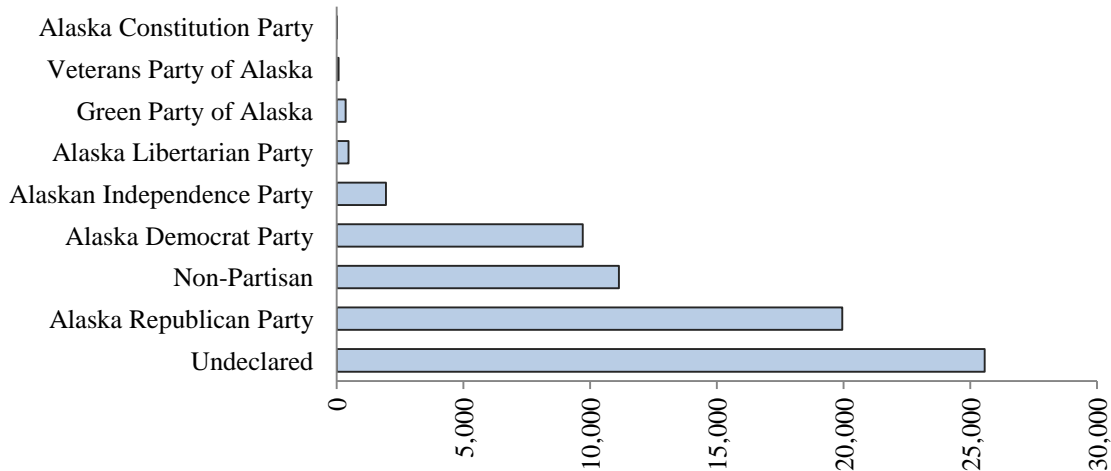
SOURCE: Division of Elections website, <http://www.elections.alaska.gov>, *Number of Registered Voters by Party Within Precinct*, September 2011. District numbers were changed due to reapportionment with the U.S. Census 2000.

[^] 2006 noted the addition of the Veterans Party of Alaska; and in 2011, the Alaska Constitution Party.

* Includes only those voters residing within the Fairbanks North Star Borough.

REGISTERED VOTERS BY PARTY AFFILIATION

Fairbanks North Star Borough
September 2011



Population and Social Conditions

ANNUAL REGISTERED VOTERS BY PARTY AFFILIATION

Fairbanks North Star Borough
September 2005-2011

	2005	2006	2007	2008	2009	2010	2011	% Change 2010-11
Alaskan Independence Party	2,057	1,692	1,677	1,726	1,730	1,936	1,954	0.9%
Alaska Democrat Party	10,665	9,170	9,368	10,041	9,987	10,010	9,712	-3.0%
Alaska Libertarian Party	465	513	478	442	427	482	474	-1.7%
Alaska Republican Party	19,455	18,051	18,389	19,159	19,272	19,583	19,958	1.9%
Non-Partisan	10,149	9,948	10,245	10,603	10,634	11,010	11,142	1.2%
Undeclared	27,380	25,391	26,612	26,417	24,768	25,262	25,574	1.2%
Alaska Constitution Party [^]	-	-	-	-	-	-	3	-
Green Party of Alaska	653	549	524	459	404	374	355	-5.1%
Republican Moderate	906	820	808	756	499	460	0	-
Veterans Party of Alaska [^]	-	44	48	47	48	70	76	8.6%
Other	325	172	-	-	-	-	0	-
TOTAL	72,055	66,350	68,149	69,650	67,769	69,187	69,248	0.1%

SOURCE: Division of Elections website, <http://www.elections.alaska.gov/>, *Number of Registered Voters by Party Within Precinct*, September 2011. District numbers were changed due to reapportionment with the U.S. Census 2000.

[^] 2006 noted the addition of the Veterans Party of Alaska ; and in 2011, the Alaska Constitution Party .

* Includes only those voters residing within the Fairbanks North Star Borough.

TOTAL ANNUAL REGISTERED VOTERS

Fairbanks North Star Borough
September 2005-2011



U.S. CENSUS

POPULATION COMPARISONS BY AGE, SEX, TRACT & 60 years >

Alaska, FNSB, Fairbanks City and North Pole City

2010 Census Data: (Part I) Tracts 1-9 of 19

	--Population by Age Groupings--						
	Total	60-61	62-64	65-69	70-74	75-84	85+
ALASKA	90,876	16,471	19,467	22,202	13,148	14,877	4,711
Male	46,037	8,884	10,347	11,714	6,662	6,770	1,660
Female	44,839	7,587	9,120	10,488	6,486	8,107	3,051
FNSB	10,950	2,093	2,482	2,637	1,533	1,684	521
Male	5,689	1,139	1,362	1,421	794	795	178
Female	5,261	954	1,120	1,216	739	889	343
Fairbanks City	3,479	546	639	755	528	713	298
Male	1,601	263	328	362	267	288	93
Female	1,878	283	311	393	261	425	205
North Pole City	195	35	55	41	31	27	6
Male	105	22	31	19	19	13	1
Female	90	13	24	22	12	14	5
All TRACTS	7,960	858	999	2,294	1,407	1,747	655
TRACT 1	3,461	48	86	1,252	785	931	359
Male	209	22	47	36	46	42	16
Female	3,252	26	39	1,216	739	889	343
TRACT 2	498	77	92	97	65	112	55
Male	239	43	46	52	27	50	21
Female	259	34	46	45	38	62	34
TRACT 3	599	122	99	111	71	113	83
Male	236	48	48	50	34	47	9
Female	363	74	51	61	37	66	74
TRACT 4	671	111	124	169	114	112	41
Male	299	53	61	74	55	39	17
Female	372	58	63	95	59	73	24
TRACT 5	330	48	63	78	44	68	29
Male	170	23	35	45	23	31	13
Female	160	25	28	33	21	37	16
TRACT 6	543	87	111	136	77	107	25
Male	261	47	58	68	37	42	9
Female	282	40	53	68	40	65	16
TRACT 7	613	89	113	144	102	131	34
Male	295	43	60	72	48	59	13
Female	318	46	53	72	54	72	21
TRACT 8	579	108	147	145	69	95	15
Male	281	52	83	70	31	41	4
Female	298	56	64	75	38	54	11
TRACT 9	666	168	164	162	80	78	14
Male	371	107	89	84	47	41	3
Female	295	61	75	78	33	37	11

SOURCE: US Department of Commerce, Bureau of the Census, Census 2010 Summary File-1 (SF-1), 100-percent data, October 2011. Census website, <http://www.census.gov>.

U.S. CENSUS

POPULATION COMPARISONS BY AGE, SEX, TRACT & 60 years >

Alaska, FNSB, Fairbanks City and North Pole City

2010 Census Data: (Part II) Tracts 10-19 of 19

	Total	--Population by Age Groupings--					
		60-61	62-64	65-69	70-74	75-84	85+
		(continued)					
TRACT 10	236	44	51	58	33	43	7
Male	132	26	25	38	15	23	5
Female	104	18	26	20	18	20	2
TRACT 11	18	3	3	5	3	4	0
Male	10	3	1	2	3	1	0
Female	8	0	2	3	0	3	0
TRACT 12	960	195	237	230	119	134	45
Male	520	110	134	133	58	71	14
Female	440	85	103	97	61	63	31
TRACT 13	860	168	192	222	128	127	23
Male	470	93	115	122	65	65	10
Female	390	75	77	100	63	62	13
TRACT 14	778	161	175	204	123	102	13
Male	426	88	92	116	71	54	5
Female	352	73	83	88	52	48	8
TRACT 15	859	175	242	236	107	75	24
Male	473	100	124	130	61	48	10
Female	386	75	118	106	46	27	14
TRACT 16	475	93	106	125	75	56	20
Male	253	49	60	70	38	29	7
Female	222	44	46	55	37	27	13
TRACT 17	248	27	75	64	46	29	7
Male	141	17	40	39	24	16	5
Female	107	10	35	25	22	13	2
TRACT 18	19	9	6	2	0	2	0
Male	7	2	4	1	0	0	0
Female	12	7	2	1	0	2	0
TRACT 19	1,548	360	396	366	204	180	42
Male	896	213	240	219	111	96	17
Female	652	147	156	147	93	84	25

SOURCE: US Department of Commerce, Bureau of the Census, Census 2010 Summary File-1 (SF-1), 100-percent data, October 2011. Census website, <http://www.census.gov>.

U.S. CENSUS

POPULATION TRENDS

Fairbanks, North Pole, Southeast Fairbanks, and Statewide
By Decennial Year

Census Year	Fairbanks North Star Borough				Southeast Fairbanks Census Area	(Formerly) Election District 19*	Statewide Total
	City of Fairbanks	City of North Pole	Outside City	Total			
1910	3,541					11,000	69,000
1920	1,155					2,182	55,000
1929	2,101					3,446	59,278
1939	3,455					5,692	72,524
1950	5,771					19,409	128,643
1960	**13,311	358	27,415	41,084	2,368	43,412	226,167
1970	18,053	265	27,546	45,864	4,179	50,043	302,173
1980	***22,645	724	30,614	53,983	****5,770	59,754	400,481
1990	30,843	1,456	45,421	77,720	5,913	83,633	550,043
2000	30,224	1,570	51,046	82,840	6,174	89,014	626,932
2010	31,535	2,117	63,929	97,581	7,029		710,231

SOURCE: US Census of Population 1910 to 2010 (years ending in 9 are associated to the following year reporting period. Census data and dates are reflected as reported by US Census).

NOTE: City of Fairbanks incorporated November 10, 1903. City of North Pole incorporated on January 15, 1953. Fairbanks North Star Borough incorporated on January 1, 1964. Decennial Census occurs every 10 years.

* Although the geographic boundaries of the Fairbanks Election District have not been the same in every census, the population changes have been roughly in accordance with the spread of the settled area and the increase in population in places previously settled.

** The large increase in the city population from 5,771 in 1950 to 13,331 in 1960 is accounted for by a growth of 2,545 in the former area of the city and the annexation of some suburban area with a population of 4,995.

*** US Census 14,771 plus annexation of Graehl (ED21) 349, Lemeta (ED 22) 1,318, Aurora-Johnson (ED 23) 1,464, (ED 34, part of South Bjerremark) 76, (ED 31) 63, and (ED 33) 12.

**** Boundaries changed.

U.S. CENSUS

HISTORICAL POPULATION TRENDS

Interior, Alaska
By Decennial and By Year

Year	Fairbanks North Star Borough			Native	Non-Native	Total	Civilian	Military	Civilian/ Military Total
	City of Fairbanks	Outside City	Total						
1880	0	2,568	na	2,560	8	2,568			
1890	0	2,333	na	2,188	145	2,333			
1900	0	5,700	na	3,000	2,600	5,600			
1910	3,541	9,523	na	2,403	10,661	13,064			
1920	*1,155	7,964	na	2,500	5,464	7,964			
1930	*2,101	8,246	8,246	3,329	4,917	8,246			
1940	3,455	6,890	10,345	3,462	6,883	10,345	10,335	10	20,680
1950	5,771	17,237	23,008	3,666	19,342	23,008	17,589	5,419	40,597
1960	13,311	35,817	49,128	4,638	44,490	49,128	38,282	10,846	87,410
1964	**16,032	34,516	50,548				***40,543	***10,437	50,980
1965	**16,464	33,579	50,043				***40,089	***10,690	50,779
1966	**19,468	33,337	52,805				***40,504	***10,635	51,139
1967	**19,468	33,569	53,037				***40,949	***10,420	51,369
1968	**19,468	33,500	52,968				***41,400	***9,900	51,300
1969	**19,468								
1970	##21,515								

SOURCE: Fairbanks, *All American City--1970, General Information and Economic Factors Concerning the Fairbanks Community*. Sources cited in the bonding documents: Figures 1880-1960, Rogers & Cooley, Alaska's Population and Economy, based upon US Bureau of Census Reports. Replicated from Fairbanks North Star Borough-Community Research Quarterly, pg. 85, Vol. X, No. 3, Fall 1987.

NOTE: The Fairbanks North Star Borough was incorporated on January 1, 1964. Decennial Census occurs every 10 years.

na not available.

***** Had less than 2,500 and were therefore considered in the rural total by the US Bureau of Census.

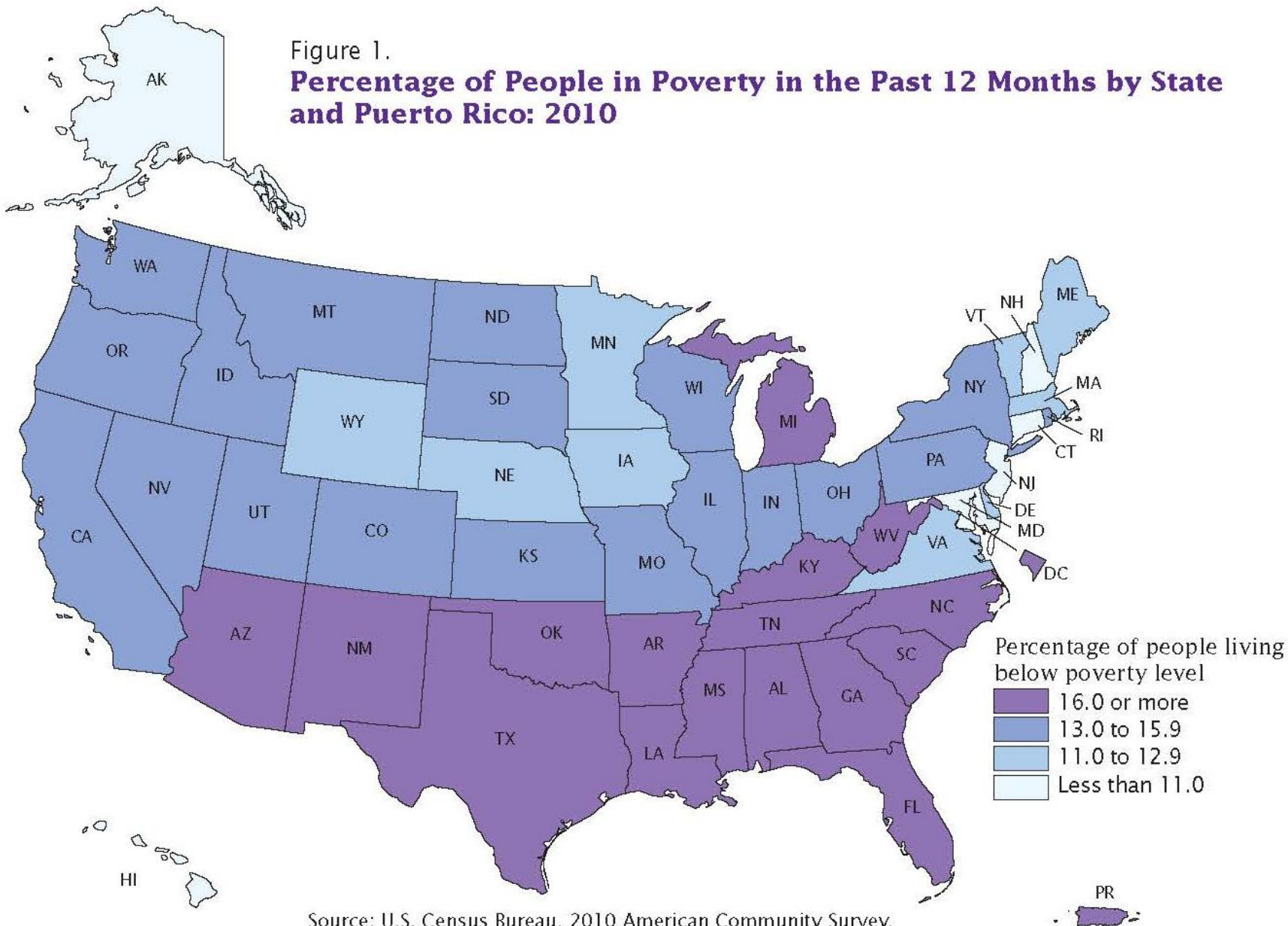
****** City council estimates.

******* Alaska State Department of Labor, Employment Security Division; includes original Election Districts 18, 19, and 20.

Rural designation applies to all the area outside of the city of Fairbanks in the three Election Districts.

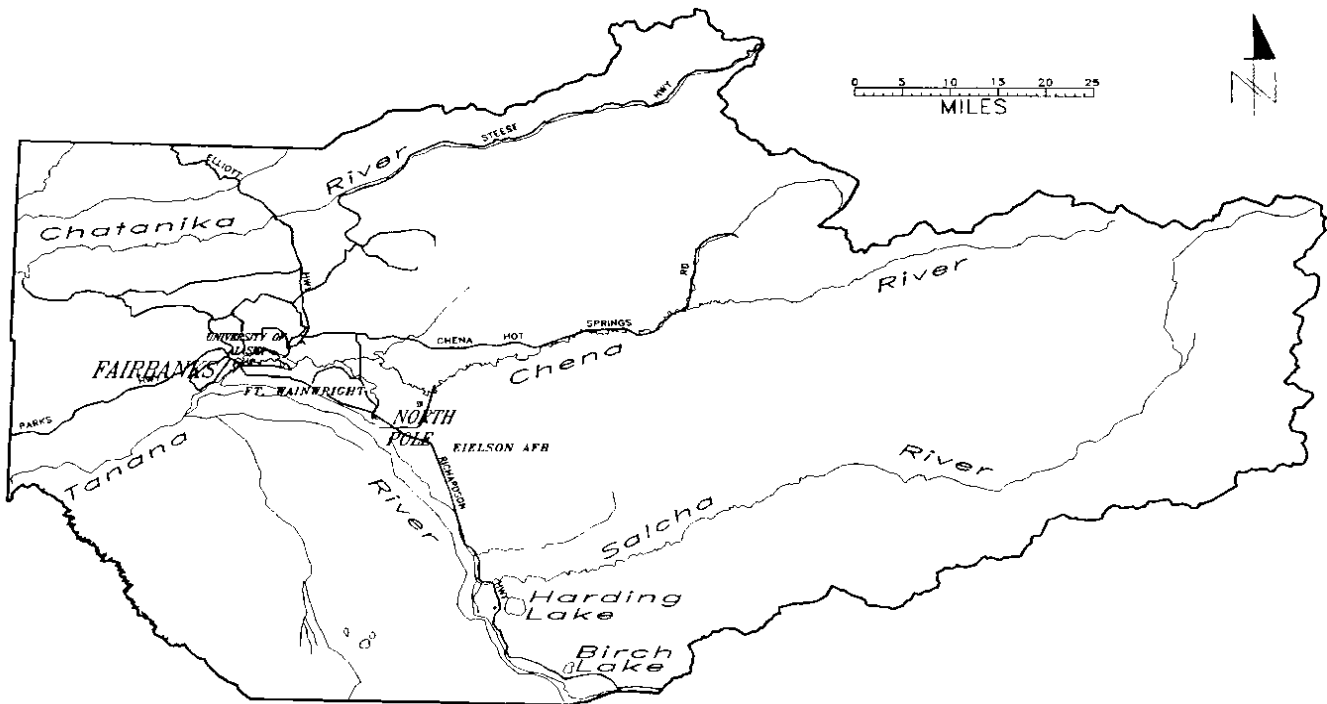
Resolution No. 645 passed November 24, 1969 sets the official population at 21,515 for 1970; however, anticipated annexations will increase this figure by: Lemeta 1,500; Aurora 844; Johnson 255; Graehl 344; South Fairbanks 214. Annexation Total: 3,157--Fairbanks Total: 24,672.

Figure 1.
Percentage of People in Poverty in the Past 12 Months by State and Puerto Rico: 2010



Source: U.S. Census Bureau, 2010 American Community Survey, 2010 Puerto Rico Community Survey.

FNSB VICINITY MAP



Date of Incorporation: January 1, 1964

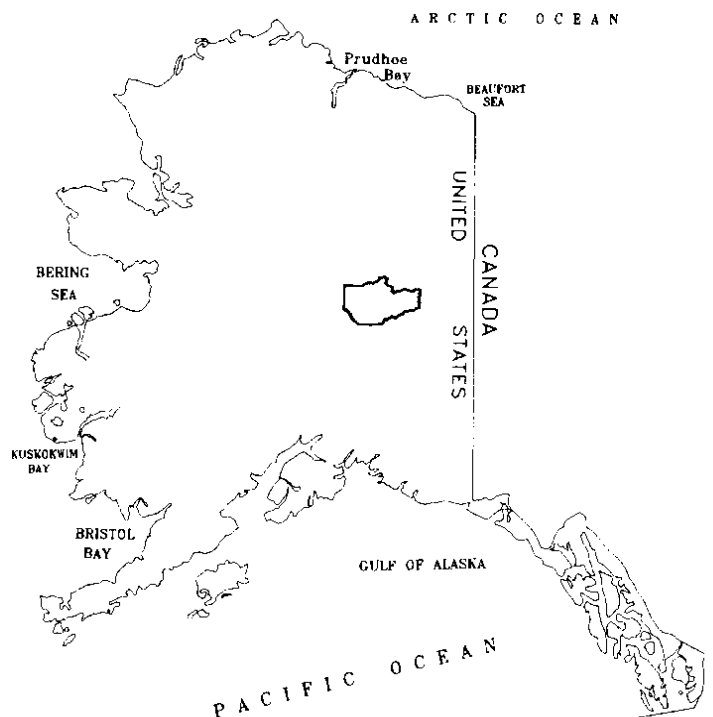
Form of Government: Second Class Borough

Type of Government: Borough Mayor, 3 yr. Term
Assembly, 9 Members
Elected at large, 3 yr. Terms

Population (2010)
U.S. Census: 97,581

Size: 7,361 square miles
19,065 square kilometers

Certified Assessed Valuation (2011): \$7,884,084,715 (non-pipeline)
\$ 652,120,640 (pipeline)



Fairbanks North Star Borough
Community Research Center
PO Box 71267
Fairbanks, AK 99707-1267

TO: