



Fairbanks
North
Star
Borough

Community Research Center
PO Box 71267
Fairbanks, Alaska 99707-1267
(907) 459-1000

COMMUNITY RESEARCH QUARTERLY

A Socio - Economic Review



COMMUNITY RESEARCH CENTER

The Community Research Center is located on the second floor
of the Borough Administration Building
at 809 Pioneer Road.

Office and Research Library hours are Monday through Friday
8:00 a.m. to Noon and 1:00 p.m. to 5:00 p.m.



CITATION

Tabular and summary information contained herein may be reproduced without special permission. It is requested that any information reproduced be cited as follows: Fairbanks North Star Borough, Community Research Center, *Community Research Quarterly*, Vol. XXXII, No. 2, 2009

ACKNOWLEDGMENTS

The Community Research Center would like to thank the many persons, businesses, government agencies and organizations who contributed to this report. FNSB has established a policy of equal opportunity in employment, service, programs and activities.

COVER PAGE

US Census 2010 "It's in Our Hands" theme 'hands' logo modified for the FNSB Complete Count Committee logo is used to express the importance of counting every person residing in the Fairbanks North Star Borough. It only happens every 10 years. The population totals from this census will determine the number of seats each state has in the Congressional House of Representatives. States use the population totals to draw their legislative districts. The totals also affect funding in our community, and data collected in the census help inform decision makers how our community is changing.

The 2010 Census will be short form only – just 10 easy questions.

FAIRBANKS NORTH STAR BOROUGH
COMMUNITY RESEARCH QUARTERLY
A Review of Socio - Economic Trends

Volume XXXII, Number 2
Summer 2009

BOROUGH MAYOR
Jim Whitaker

DIVISION OF ECONOMIC DEVELOPMENT
Dr. Kathryn Dodge, Economic Development Specialist

COMMUNITY PLANNING DEPARTMENT
Bernardo Hernandez, Director

COMMUNITY RESEARCH CENTER
Janet R. Davison, Documentation Coordinator II

Fairbanks North Star Borough, Community Research Center
PO Box 71267, Fairbanks, Alaska 99707-1267
Phone: (907) 459-1212; e-mail: jdavison@co.fairbanks.ak.us
WEBSITE: <http://co.fairbanks.ak.us/CommunityPlanning/CRC>

Table of Contents

| | <u>Page</u> |
|---|--------------|
| Community Research Quarterly Analysis | i-iv |
| Fairbanks Economy at a Glance | 1-2 |
| Economic Indicators | 3-16 |
| Bank Deposit & Loan Summary | 3 |
| Bankruptcies Filed | 4 |
| Notices of Default | 5 |
| Foreclosures | 6 |
| Fairbanks International Airport Freight | 7 |
| Fairbanks International Airport Transit Freight | 8 |
| Fairbanks International Airport Revenue Landings | 9 |
| Fairbanks International Airport Passengers | 10 |
| Alaska Highway Statewide Entering Passengers | 11 |
| Alaska Highway Statewide Exiting Passengers | 11 |
| Alaska Highway Statewide Net Annual Migration Trends | 12 |
| Alaska Highway Statewide Net Monthly Migration | 12 |
| Hotel / Motel Room Receipts | 13 |
| University of Alaska Museum Visitors | 13 |
| University of Alaska Museum & Morris Thompson Cultural and Visitor Center | 14 |
| Morris Thompson Cultural and Visitor Center | 14 |
| Assessed Value of Property | 15 |
| Assessed Value of Pipeline Related Property | 16 |
| Employment | 17-21 |
| Civilian Labor Force Unemployment Rates | 17-18 |
| Average Monthly Employment Estimates by Sector | 18 |
| Average Monthly Employment Estimates by Industry | 19 |
| Annual Average Monthly Employment by Industry | 20 |
| Annual Average Monthly Wage by Industry | 21 |



Table of Contents

| | <u>Page</u> |
|--|--------------|
| Housing | 22-28 |
| Apartment/Multi-Plex Vacancy Rates | 22 |
| Rental Housing Units Available | 23 |
| Average Monthly Rents for Available Housing Units | 24 |
| Residential Housing Sales | 25 |
| Annual Average Residential Housing Sales | 26 |
| Deeds of Trust Recorded | 27 |
| New Structures Annual Report | 28 |
| | |
| Cost of Living | 29-35 |
| ACCRA Cost of Living Index | 29-30 |
| Consumer Price Index-U for All Items | 30 |
| Consumer Price Index-U (Anchorage) | 31 |
| Consumer Price Index-U for All Items (U.S. City Average) | 31 |
| Consumer Price Index-U for All Urban Consumers, Major Components (Anchorage) | 32 |
| Consumer Price Index-U for All Urban Consumers, Major Components (U.S. City Average) | 33 |
| Cost of Food at Home for a Week | 34 |
| Average Self-service Unleaded Gasoline Prices | 35 |
| | |
| Population & Social Conditions | 36-39 |
| Population Counts & Estimates | 36 |
| Military Population | 37 |
| A SURVEY: Did you fill out and mail back a US Census 2000 Questionnaire? | 38-39 |

NOTE FROM THE EDITOR:

If you have a change in your address information and wish to continue to receive the hard copy of the *Community Research Quarterly* please advise this office as soon as possible so the database can be altered before the next mailing. In an effort to conserve on postage costs if your issue of the *Community Research Quarterly* is returned for any reason, we will not attempt to resend. Thank you for your cooperation.

COMMUNITY RESEARCH QUARTERLY ANALYSIS¹

Summer 2009

Dr. Kathryn Dodge, FNSB Mayor's Office, Economic Development Division

Introduction

During the second quarter of 2009, the international economy was in a recession, nationally the housing market was stalled, the financial markets were beginning to recover and unemployment reached 9.7%. Locally, 4,000 members of the Stryker Brigade were deployed, tourism was down 25%, residential housing sales were down, housing prices were flat, and unemployment was 7.3%. Locally, foreclosures and bankruptcies were up, but not to troubling levels. This describes an economy that is stressed, but continues to hold its own. The August return of 4,000 Strykers will help some areas of the economy; however, energy prices remain a wild card.

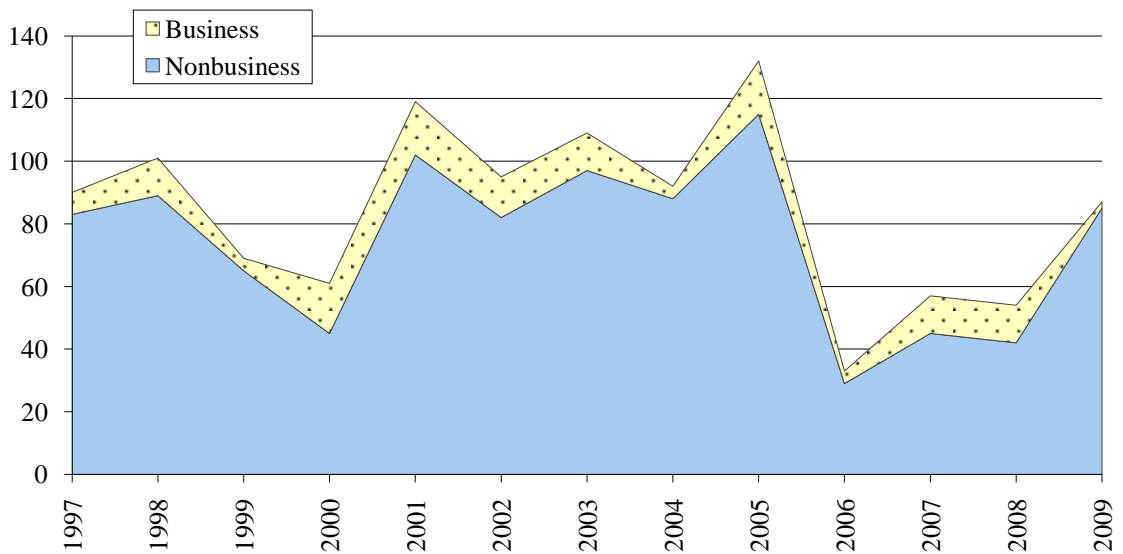


Figure 1: FNSB average bankruptcy 1997-2009.

Financial

The reported Loan to Deposit ratio remains a bit high, but given that most banks that are servicing the Fairbanks North Star Borough (FNSB) are nationally owned, this is no longer a very good indicator of local conditions. The second quarter notices of default are flat and not a cause for concern. Bankruptcies are a lagging indicator of economic condition, usually reflecting conditions approximately 18 months earlier, and are up from 28 in the second quarter of 2008 to 56 in the same period of 2009. At first glance it appears that business bankruptcies are down; this is incorrect. Rather, this is a reflection of a reporting change – the U.S. Bankruptcy Court has quit reporting business and non-business bankruptcies separately. Figure One suggests that in the FNSB, like the nation, bankruptcies are returning to pre 2005 reform levels (<http://www.creditcards.com/credit-card-news/bankruptcy-filings-back-to-pre-reform-levels-1282.php>, September 11, 2009). Foreclosures,

¹ **Disclaimer:** This document was prepared as a service to the Fairbanks North Star Borough community. This publication is not intended to be admissible in any court action or any other proceeding by any person or party, pursuant to Alaska Evidence Rule 803(8), or otherwise. Neither the Fairbanks North Star Borough nor any of its employees make any warranty, express or implied, or assume any legal liability or responsibility for the accuracy, completeness or usefulness of any information included herein and any reliance upon any information provided in this document is not justified.

also a lagging indicator, have increased from 9 in the second quarter of 2008 to 13 in the same period of 2009. These are not alarming figures; however, it is not a trend we want to see continue.

Housing

Housing sales were down 18% in the first half of 2009 compared to the first half of 2008; however, prices were essentially flat (-2%). The number of homes sold in 2008 (865) was compared favorably with the 2000-2008 average of 882; however, 2008 sales were down 14% compared to 2007. The average 2008 sales price was down 3.6% in comparison to 2007 prices. Finally, there were 354 new structures built in 2008, down from 750 in 2007. The different mix of new home sales to existing home sales may explain the small drop in prices between 2007 and 2008.² Assessed property values continued to rise, though modestly, averaging about a 5% increase in 2008.

Energy Efficiency Upgrades

In 2008, the State of Alaska developed a program to reimburse homeowners for increasing their home’s energy efficiency. Homeowners have up to 18 months to apply for reimbursement from the day they get their initial energy rating, make improvements, get post-rating inspections, and submit their final receipts. To date 3,166 FNSB homeowners have applied for an energy rebate, and 420 have completed the process. The total number of FNSB energy rebate applicants represents 20% of all Alaskan applicants, and 15% of Alaska’s population. The average FNSB rebate has been \$5,867, close to the state average of approximately \$6,000 (personal communications, R. Ricketts, AHFC, 9/3/09; email, K. Bowers, AHFC, 9/11/09).

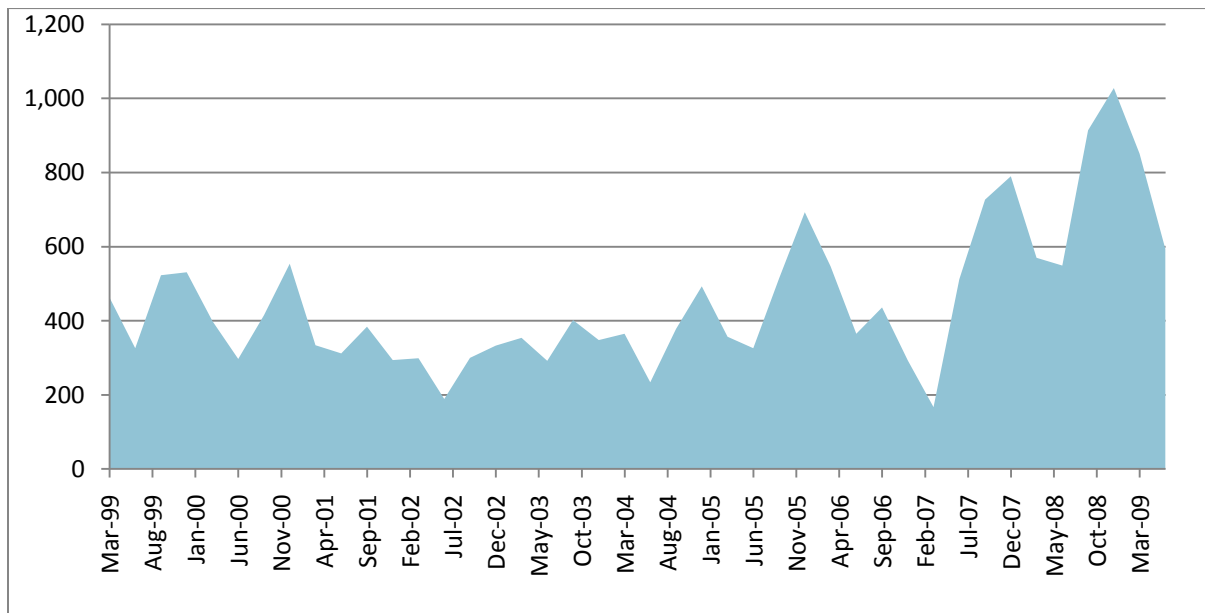


Figure 2 FNSB 1999-2009 Vacancy Rates

Rental Vacancy

The managed property rental market continues to be weak due to the deployment of 4,000 Stryker Brigade troops and the entry of 450 units of former *Section 801* military housing in the spring of 2007. While more than 85% of the Stryker’s dependents remained in the borough, the impact of their deployment is clearly visible in reported vacancy rates. The additional 450 units of 3+ bedroom *Section 801* military housing has stressed this market, which is reported at an 11.1% vacancy rate in the second quarter; however, this is down more than 7% from the first quarter 2009 rate of 18.5%.

² New homes typically demand a premium compared to existing homes.

Readers will recall that the vacancy rate historically reported in the FNSB Community Research Quarterly includes only the 3-4,000 managed properties within the FNSB, and excludes the 13,000+ non-managed properties.

The vacancy rate that of both managed and non-managed properties is more representative of the FNSB market. In the second quarter of 2009 the combined vacancy rate was 3.3% (available rentals / all available rental units in FSNB). However, it is clear that the Section 801 housing adjusted the baseline of the FNSB vacancy rate, as reflected in Figure Two. Another 150 units of 3 and 4 bedroom Section 801 housing will be coming on the market January of 2010, which may ratchet the baseline up again as the market absorbs more rental housing.

Industry Report

The Airport transit freight reports reflect an industry that has left our community. Revenue landings were also down, reflecting lower freight and tourist travel. Incoming and outgoing passenger travel was down about 10% from the second quarter of 2008 and the first half of the year was down about 9% compared to 2008. Hotel room receipts were down 25% in the second quarter as were the number of people visiting the University of Alaska Museum; for the first half of the year, these figures were down 15% and 19%, respectively. Employment in the hospitality industry was down from 4,500 in the second quarter of 2008 to 4,400 in 2009, or 2.2%.

Due to reduced demand for aviation fuel at the Anchorage International Airport, Flint Hills Refinery shut down one out of three “crude units” on March 15 and restarted it in May. This also impacts the Alaska Rail Road, as they have less product to transport. The shut down did not result in any layoffs. While not reflected in this quarterly, other than in employment figures, at \$900+ per ounce, gold mining and exploration remained strong. Employment figures report that 1,100 people employed in Mining and Logging in this period, up 10% from the same period in 2008. Healthcare also remained strong, increasing 200 jobs, or 6% over the same period in 2008. Construction, Manufacturing, Professional and Business Services sectors, all remained flat. These industries coupled with local, state, and federal construction expenditures helped keep the FNSB economy on a reasonably even keel through this period.

Employment

FNSB unemployment increased 24% over the same period in 2008 to 7.3%; however, this compares favorably to a 75% increase nationally to 9.1%. However, putting these figures in context, average monthly employment fell by only 100 for the second quarter, leaving one to wonder if the unemployment figures increased because workers were coming into the area looking for work, or seasonal workers were entering the workforce and finding fewer opportunities. Probably unemployment increased as a result of both of these forces. Finally, the average annual monthly wage increased 4.5% between 2007 and 2008.

On the bright side, American Recovery Act money should be starting to flow through the system into the community in the third and fourth quarters. This will include increased construction on the bases, money for education, energy upgrades, transportation projects, and community economic stimulus money.

The 2010 Census

Next March the U.S. Census Bureau will kick off the 2010 Decennial Census by mailing out Census Questionnaires to U.S. residents. In the FNSB, we face some additional challenges, the biggest one being that FNSB residents use P.O. Boxes extensively, and the U.S. Census Bureau does not mail Questionnaires to P.O. Boxes. Therefore, the FNSB has established a Census Complete Count

Committee to ensure that FNSB residents know to look in their mailboxes for questionnaires, and if they don't receive one, for whatever reason, they know where to pick up a questionnaire. The U.S. Census Bureau will set up kiosks around town where people can pick up and fill out "Be Counted" forms; there will also be Questionnaire Assistance Centers where people can get help filling out their questionnaires. Finally, the U.S. Census Bureau provides phone support for people needing language or other assistance. The FNSB Complete Count Committee will continue to provide information about how borough residents can participate in the US Census, and how local organizations can help get the count out.

Summary

In conclusion, the FNSB economy continues to show signs of stress largely as a result of the international financial and national housing crises. The deployment of 4,000 Stryker Brigade troops exacerbated this situation. Their return in August and September and the expenditure of American Recovery and Reinvestment Act money will help the FNSB economy persist through these difficult times. The community remains vulnerable to the ups and downs of energy prices as it find ways to ensure a sustainable source of affordable energy.

The preparation of this report was financed in part by funds received from the State Department of Commerce, Community and Economic Development, Office of Economic Development and the Alaska Industrial Development and Export Authority.

ECONOMY AT-A-GLANCE

Fairbanks North Star Borough

| Economic Indicator | Current Data Period | One Period Ago | One Year Ago |
|--------------------------------------|---------------------|----------------------------|----------------------------|
| Reporting Period | 2nd Qtr. '09 | % Change from 1st Qtr. '09 | % Change from 2nd Qtr. '08 |
| BANKING | | | |
| Total Bank Deposits (millions of \$) | \$826.9 | 5.1% | 3.9% |
| Total Bank Loans (millions of \$) | \$701.4 | 2.3% | 14.6% |
| BANKRUPTCIES | | | |
| Business | 2 | ^ | -66.7% |
| Non-Business | 54 | 74.2% | 145.5% |
| TRANSPORTATION | | | |
| Fairbanks International Airport | | | |
| Incoming Freight (thousands of lbs.) | 1,917 | -74.3% | -42.8% |
| Outgoing Freight (thousands of lbs.) | 9,240 | -5.0% | 1.1% |
| Transit Freight (thousands of lbs.) | 908 | -94.0% | 0.2% |
| Revenue Landings | 6,245 | 20.8% | -6.0% |
| Incoming Passengers | 120,133 | 27.2% | -11.5% |
| Outgoing Passengers | 111,970 | 23.2% | -10.5% |
| Alaska Highway (statewide) | | | |
| Entering Passengers | 40,275 | 340.8% | 82.8% |
| Exiting Passengers | 23,873 | 305.4% | -4.9% |
| EMPLOYMENT | | | |
| Total Employment | 39,000 | 8.0% | -0.3% |
| Natural Resources & Mining | 1,100 | 10.0% | 10.0% |
| Construction | 2,800 | 47.4% | 0.0% |
| Manufacturing | 700 | 16.7% | 0.0% |
| Trade/Transportation/Utilities. | 7,600 | 4.1% | -1.3% |
| Information | 600 | 0.0% | 0.0% |
| Financial Activities | 1,500 | 7.1% | -6.3% |
| Professional & Business Services | 2,500 | 25.0% | 4.2% |
| Education & Health Services | 4,500 | 0.0% | 4.7% |
| Leisure & Hospitality | 4,400 | 22.2% | -4.3% |
| Other Services | 1,200 | 0.0% | -7.7% |
| Government | 12,200 | 2.5% | 0.0% |

NOTE: Employment numbers rounded to nearest 100.

Fairbanks Economy at a Glance

(continued)
Fairbanks North Star Borough

| Economic Indicator | Current Data Period | One Period Ago | One Year Ago |
|-----------------------------------|---------------------|----------------|--------------|
| Reporting Period (annual/by qtr.) | | | |
| CONSTRUCTION | Annual | | |
| New Structures Annual Report | 354 | 0.0% | -52.8% |
| Reporting Period (annual/by qtr.) | 2nd Qtr. '09 | 1st Qtr. '09 | 2nd Qtr. '08 |
| REAL ESTATE | | | |
| Single Family Houses | | | |
| Number Sold | 214 | 111.9% | -17.7% |
| Average Price | \$215,525 | -4.8% | -2.3% |
| RENTALS | | | |
| Residential Rentals | | | |
| Rental Units Advertised | 594 | -30.2% | 8.2% |
| Average Rent (2 bdrm. apartment) | \$1,018 | -1.6% | -0.1% |
| DEEDS OF TRUST | | | |
| Number Recorded | 1,194 | 46.3% | 28.7% |
| Total Valuation (thousands of \$) | \$218,152 | 28.5% | 17.5% |
| MILITARY | | | |
| Military Active Duty Personnel | 6,832 | -1.4% | 2.8% |
| Military Dependents | 11,825 | -0.4% | 13.0% |
| POPULATION++ | | | |
| FNSB (Census annual)* | 97,970 | 0.0% | 0.5% |
| FNSB (DCCED annual)^ | 97,970 | 0.0% | 1.1% |
| FNSB (ADOL annual)** | 89,896 | 0.0% | -1.2% |
| City of Fairbanks** (annual) | 30,367 | 0.0% | -4.0% |
| City of North Pole** (annual) | 2,099 | 0.0% | 7.9% |

SOURCE: (1) Population Division, U.S. Census Bureau, www.census.gov; July 1st estimates. Table 1: Annual Estimates of the Resident Population for the United States, Regions, States, and Puerto Rico: April 1, 2000 to July 1, 2008 (NST-EST2008-01); Release Date: December 22, 2008. Place not available at press time.

(2) Alaska Dept. of Labor and Workforce Development, Research and Analysis Section, and US Census 2000, 1990. Table 2.1 *Population of Alaska by Labor Market Area, Borough and Census Area, 1990-2007* (2008 Vintage Population Estimates). All estimates represent July 1 of that year unless stated otherwise. ADOL website: <http://almis.labor.state.ak.us>.

(3) Alaska Dept. of Commerce, Community and Economic Development (DCCED), Division of Community and Regional Affairs, certified 2008 municipal population, June 1, 2009. DCCED Certified numbers may vary from ADOL population estimates as a result of the population estimate appeal process available to incorporated communities on a yearly basis. Once certified, DCCED numbers may be applied for two consecutive calendar years.

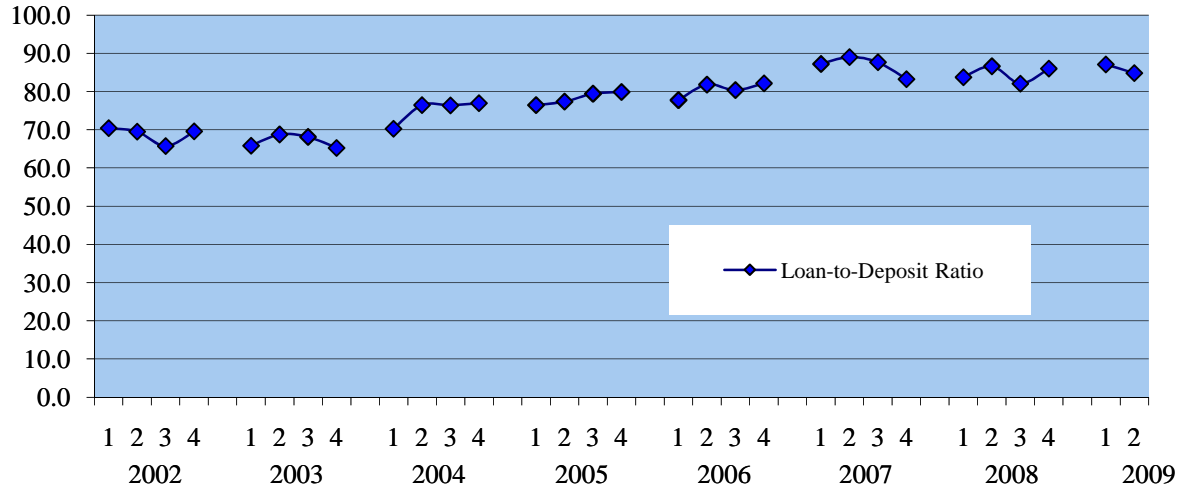
NOTE: City of Fairbanks figures include military population living on Ft. Wainwright. All borough figures include population for City of Fairbanks, City of North Pole, Ft. Wainwright Army Base and Eielson Air Force Base.

** U.S. Census number may be revised annually. Alaska Dept. of Labor and Workforce Dev. numbers are provisional.

ECONOMIC INDICATORS

BANK DEPOSIT & LOAN SUMMARY

Fairbanks North Star Borough
2002-2009, End of Quarter



BANK DEPOSIT & LOAN SUMMARY

Fairbanks North Star Borough
2002-2009

| | 2002 [^] | 2003 | 2004 | 2005 | 2006 | 2007 | 2008* | 2009 |
|-----------------------|-------------------------------|---------|---------|---------|---------|---------|---------|---------|
| Deposits | -----Millions of Dollars----- | | | | | | | |
| March 31 | \$568.4 | \$639.7 | \$695.5 | \$657.9 | \$698.4 | \$699.9 | \$751.1 | \$786.9 |
| June 30* | \$575.7 | \$672.4 | \$625.0 | \$682.1 | \$717.2 | \$731.2 | \$754.6 | \$826.9 |
| Sept. 30 | \$638.5 | \$691.3 | \$642.4 | \$700.9 | \$747.3 | \$752.7 | \$807.4 | |
| Dec. 31 | \$603.4 | \$727.4 | \$648.2 | \$703.9 | \$741.1 | \$762.1 | \$782.3 | |
| Loans | -----Millions of Dollars----- | | | | | | | |
| March 31 [^] | \$400.5 | \$421.4 | \$488.8 | \$503.1 | \$543.2 | \$610.5 | \$629.1 | \$685.4 |
| June 30* | \$400.3 | \$462.7 | \$478.1 | \$527.8 | \$587.0 | \$650.9 | \$653.7 | \$701.4 |
| Sept. 30 | \$419.9 | \$471.2 | \$490.9 | \$556.9 | \$600.7 | \$659.8 | \$662.9 | |
| Dec. 31* | \$420.0 | \$474.8 | \$499.1 | \$562.4 | \$608.9 | \$634.6 | \$673.0 | |

SOURCE: Denali State Bank, (Interior City Branch) 1st National Bank of Anchorage, Mt. McKinley Bank, Northrim Bank included in survey March 31, 1997, Key Bank of Alaska 1991 through June 30, 1997, Wells Fargo Bank Alaska, N.A. purchased and replaced National Bank of Alaska 2nd quarter 2001, personal communications 2002-2009.

NOTE: As of June 30, 2004, Wells Fargo Bank, N.A. will reflect the following 5 branches: Bentley Mall, College, Cushman, Gaffney and North Pole.

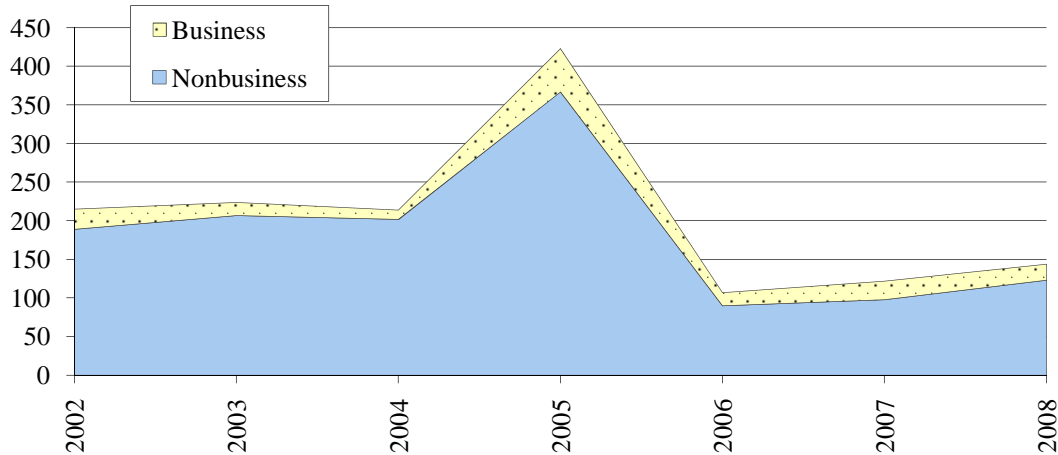
* Wells Fargo Bank Alaska, NA has revised their June 30, 2001 numbers. Denali State Bank made an adjustment in loans in the Dec. 31, 2001 numbers. Adjustment made to data entered March-June 2008 in October 2008.

[^] Correction in March 2002 calculation adjusted loan value only, November 2007.

Economic Indicators

TOTAL BANKRUPTCIES FILED

Alaska Fourth Judicial District
2002-2008



BANKRUPTCIES FILED

Alaska Fourth Judicial District
2002-2009

| | 2002 | 2003 | 2004 | 2005 | 2006 | 2007 | 2008 | 2009 |
|-----------------------------|------------|------------|------------|------------|-----------|-----------|------------|------|
| Nonbusiness | | | | | | | | |
| 1st Quarter | 40 | 39 | 41 | 50 | 9 | 20 | 20 | 31 |
| 2nd Quarter | 42 | 58 | 47 | 65 | 20 | 25 | 22 | 54 |
| 3rd Quarter | 47 | 47 | 49 | 91 | 24 | 21 | 41 | |
| 4th Quarter | 60 | 63 | 65 | 161 | 37 | 32 | 40 | |
| Total | 189 | 207 | 202 | 367 | 90 | 98 | 123 | |
| % Change from Previous Year | 5% | 10% | -2% | 82% | -75% | 9% | 26% | |
| Business | | | | | | | | |
| 1st Quarter | 8 | 4 | 2 | 5 | 1 | 3 | 6 | 0 |
| 2nd Quarter | 5 | 8 | 2 | 12 | 3 | 9 | 6 | 2 |
| 3rd Quarter | 8 | 2 | 1 | 12 | 7 | 8 | 7 | |
| 4th Quarter | 5 | 3 | 7 | 27 | 6 | 4 | 2 | |
| Total | 26 | 17 | 12 | 56 | 17 | 24 | 21 | |
| % Change from Previous Year | 44% | -35% | -29% | 367% | -70% | 41% | -13% | |

SOURCE: U.S. Courts website: www.akb.uscourts.gov, April 2002-2009.

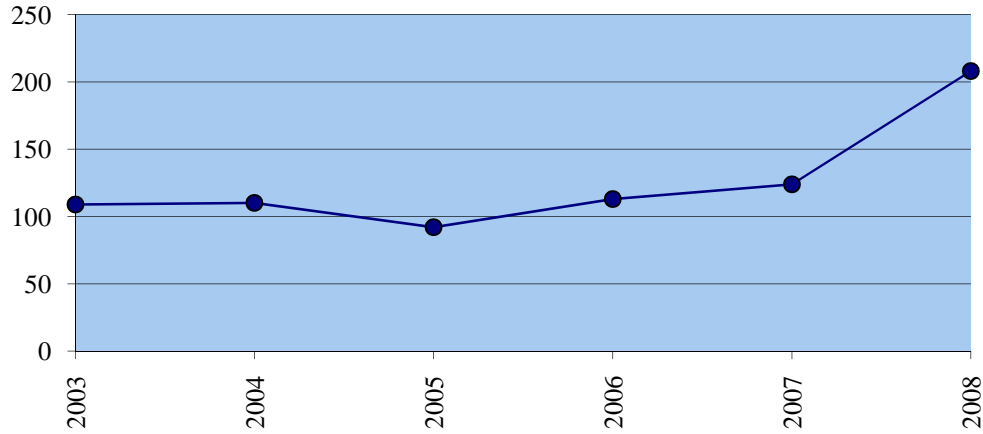
NOTE: S. 256, the Bankruptcy Abuse Prevention and Consumer Protection Act of 2005 (the "Act") provides, at Section 1501, a general effective date of 180 days from the date of enactment. Section 1501 further provides that the Act's amendments are applicable only to cases filed on or after the effective date. Attorneys anticipate a rush of clients in the months leading up to October 17, trying to file before the changes take effect. Those who do not make that deadline will face a longer, more difficult process, involving more paperwork and, possibly, less relief at the end. The Act is expected to discourage consumers from filing personal bankruptcies and for those who file, to be more expensive in terms of attorneys' fees as well as more being paid to creditors due to the means test.

Beginning in January 2009 the U.S. Bankruptcy Court changed the way they report bankruptcy cases. Due to staffing changes the information is no longer individually entered. They are using the nationwide formatting which does not sort business and non-business categories. FNSB will research the cases reported to separate the two categories.

Economic Indicators

NOTICES OF DEFAULT

Alaska Fourth Judicial District
Annual Totals
2003-2008



NOTICES OF DEFAULT

Alaska Fourth Judicial District
2003-2009 ^

| | 2003 | 2004 | 2005 | 2006 | 2007 | 2008 | 2009 | % Change 2008-09 |
|--------------|------------|------------|-----------|------------|------------|------------|------|---------------------|
| January | 6 | 10 | 2 | 9 | 14 | 18 | 20 | 11% |
| February | 9 | 15 | 9 | 5 | 5 | 17 | 28 | 65% |
| March | 14 | 8 | 6 | 17 | 8 | 8 | 21 | 163% |
| April | 9 | 16 | 8 | 10 | 14 | 16 | 21 | 31% |
| May | 9 | 8 | 10 | 8 | 18 | 17 | 18 | 6% |
| June | 9 | 11 | 7 | 14 | 12 | 19 | 18 | -5% |
| July | 4 | 11 | 11 | 11 | 6 | 22 | | |
| August | 11 | 3 | 6 | 7 | 10 | 13 | | |
| September | 9 | 7 | 10 | 10 | 13 | 20 | | |
| October | 7 | 10 | 4 | 3 | 8 | 25 | | |
| November^ | 11 | 7 | 5 | 13 | 10 | 13 | | |
| December^ | 11 | 4 | 14 | 6 | 6 | 20 | | |
| Total | 109 | 110 | 92 | 113 | 124 | 208 | | |

SOURCE: Alaska Department of Natural Resources website: www.dnr.state.ak.us, 2003-2009.

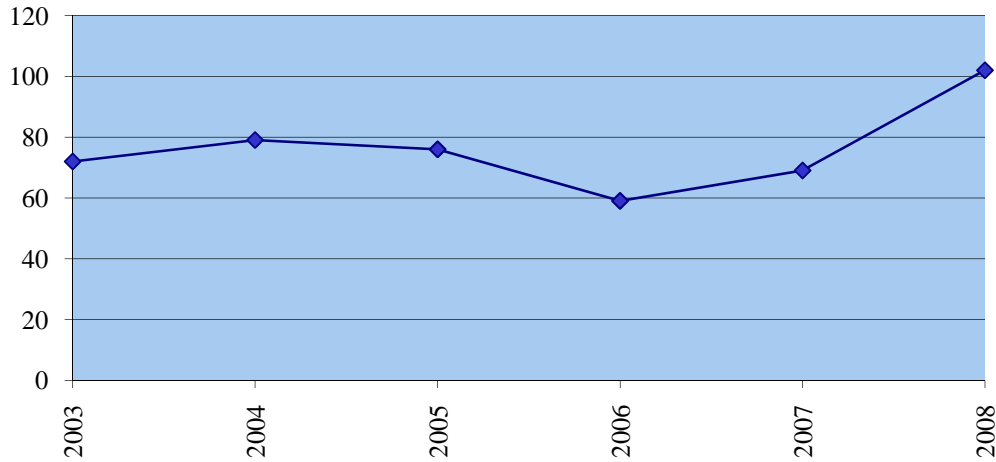
NOTE: Notices of default indicate mortgage delinquencies of at least 30 days. The notices need not result in foreclosures because deficiencies can be corrected. There can be multiple notices if a default is corrected but the mortgage falls behind again in the future. A single notice can be for more than one parcel. Notices are tabulated by date of initiation.

^ Current data supersedes previous figures reported.

Economic Indicators

FORECLOSURES

Alaska Fourth Judicial District
Annual Totals
2002-2008



FORECLOSURES

Alaska Fourth Judicial District
2003-2009 ^ **

| | 2003 | 2004 | 2005 | 2006 | 2007 | 2008 | 2009 | % Change 2007-08 |
|--------------|-----------|-----------|-----------|-----------|-----------|------------|------|---------------------|
| January | 6 | 6 | 4 | 1 | 7 | 5 | 12 | 140% |
| February | 4 | 9 | 11 | 2 | 6 | 9 | 20 | 122% |
| March | 7 | 5 | 4 | 5 | 3 | 6 | 16 | 167% |
| April | 6 | 3 | 5 | 3 | 3 | 7 | 14 | 100% |
| May | 6 | 5 | 2 | 5 | 6 | 10 | 12 | 20% |
| June | 8 | 5 | 7 | 9 | 3 | 10 | 13 | 30% |
| July | 8 | 14 | 7 | 7 | 13 | 5 | | |
| August | 2 | 8 | 5 | 7 | 8 | 8 | | |
| September | 7 | 4 | 5 | 4 | 6 | 11 | | |
| October | 3 | 5 | 7 | 4 | 8 | 14 | | |
| November | 9 | 7 | 10 | 3 | 3 | 4 | | |
| December | 6 | 8 | 9 | 9 | 3 | 13 | | |
| Total | 72 | 79 | 76 | 59 | 69 | 102 | | |

SOURCE: Alaska Department of Natural Resources website: www.dnr.state.ak.us, 2003-2009.

NOTE: Foreclosures in this table indicate the loss of property by a borrower as a result of an Affidavit of Foreclosure, Deed in Lieu of Foreclosure, Relinquishment, Trustee Deed, or Judicial Deed of Foreclosure. More than a single parcel may be affected by the foreclosure. Foreclosures are tabulated by date of initiation.

^ All numbers revised 2002-2004 in August 2004. 2004-2006 number adjusted January 2007.

** 2008 numbers are preliminary and maybe be revised.

CORRECTION: 2004-2006 adjustments occurred and are reflected because Patents were collected/reflected in error, January 2007. Patents are not foreclosures but rather a transfer of property between governments or from a government to an individual.

Economic Indicators

FAIRBANKS INTERNATIONAL AIRPORT FREIGHT*^
2003-2009

| | 2003 | 2004 | 2005 | 2006 | 2007 | 2008 | 2009 | % Change 2008-09 |
|-----------------|---------------------------------|---------------|----------------|---------------|---------------|---------------|-------|---------------------|
| Incoming | ----- Thousands of Pounds ----- | | | | | | | |
| January | 1335 | 1232 | 1,031 | 671 | 764 | 710 | 616 | -13% |
| February | 1262 | 1,106 | 949 | 794 | 907 | 724 | 647 | -11% |
| March | 1340 | 1304 | 1,252 | 976 | 994 | 802 | 6,189 | 672% |
| April | 1,281 | 1387 | 1,768 | 890 | 1,041 | 879 | 627 | -29% |
| May | 1467 | 1,515 | 893 | 1,009 | 1,102 | 914 | 657 | -28% |
| June | 1,285 | 1,544 | 64,151 | 1,061 | 1,002 | 1,557 | 633 | -59% |
| July | 1,527 | 1,576 | 1,131 | 883 | 968 | 983 | | |
| August | 1,650 | 1,832 | 1,277 | 1,211 | 1,065 | 1,045 | | |
| September | 1,897 | 1,787 | 1,267 | 1,088 | 1,036 | 1,035 | | |
| October | 1670 | 1,670 | 1,010 | 701 | 880 | 930 | | |
| November | 1331 | 1,600 | 894 | 934 | 868 | 714 | | |
| December | 1,108 | 1252 | 827 | 774 | 570 | 552 | | |
| Total | 17,153 | 17,805 | 76,450 | 10,992 | 11,197 | 10,845 | | |
| Outgoing | ----- Thousands of Pounds ----- | | | | | | | |
| January | 4,595 | 3,594 | 4,168 | 4,113 | 3,368 | 2,182 | 1,806 | -17% |
| February | 3,286 | 3,611 | 4,111 | 3,708 | 3,156 | 2,681 | 2,257 | -16% |
| March | 4,183 | 4,273 | 5,115 | 4,197 | 3,992 | 2,677 | 5,667 | 112% |
| April | 3,903 | 4,309 | 5,223 | 4,151 | 3,552 | 2,935 | 3,216 | 10% |
| May | 4,680 | 4,111 | 4,200 | 4,790 | 3,324 | 3,077 | 2,836 | -8% |
| June | 5,581 | 6,754 | 69,684 | 4,285 | 4,096 | 3,126 | 3,188 | 2% |
| July | 4,648 | 6,023 | 5,723 | 4,038 | 3,754 | 3,595 | | |
| August | 4,892 | 6,140 | 5,966 | 7,663 | 4,726 | 2,930 | | |
| September | 4,962 | 5,859 | 6,887 | 4,285 | 3,311 | 2,768 | | |
| October | 4,526 | 5,953 | 4,550 | 3,794 | 2,617 | 3,407 | | |
| November | 3,673 | 4,556 | 4,173 | 3,664 | 2,982 | 2,479 | | |
| December | 3,877 | 4,789 | 4,196 | 2,996 | 2,314 | 2,866 | | |
| Total | 52,806 | 59,972 | 123,996 | 51,684 | 41,192 | 34,723 | | |

SOURCE: Alaska Department of Transportation and Public Facilities, Fairbanks International Airport, "Fairbanks International Airport Statistical Report," 2003-2009.

NOTE: Marked decrease in outgoing freight directly related to Evergreen International Airlines moving Anchorage construction materials in June 2005. USPS began shipping bypass mail to Barrow via truck rather than air as of March 2006. UPS made a sizeable stop in March 2009.

^ June-August 2005 Evergreen International Airlines is moving Anchorage construction materials.

* Numbers are preliminary and may be subject to revision.

Economic Indicators

FAIRBANKS INTERNATIONAL AIRPORT TRANSIT FREIGHT*^
2003-2009

| | 2003 | 2004 | 2005 | 2006 | 2007 | 2008 | 2009 | % Change 2008-09 |
|--------------|-------------------------------|----------------|----------------|---------------|--------------|---------------|--------|---------------------|
| | -----Thousands of Pounds----- | | | | | | | |
| January | 16,941 | 11,390 | 10,472 | 6,428 | 575 | 299 | 463 | 55% |
| February | 18,648 | 14,191 | 11,083 | 7,078 | 1,410 | 341 | 298 | -13% |
| March | 24,193 | 17,955 | 13,479 | 6,379 | 483 | 335 | 14,296 | 4167% |
| April | 15,375 | 13,990 | 11,958 | 4,888 | 650 | 338 | 302 | -11% |
| May | 13,592 | 13,444 | 9,515 | 5,173 | 699 | 261 | 245 | -6% |
| June | 13,460 | 13,399 | 13,271 | 1,434 | 823 | 307 | 361 | 18% |
| July | 13,863 | 13,374 | 22,060 | 1,059 | 371 | 4,334 | | |
| August | 11,646 | 12,004 | 12,981 | 910 | 572 | 5,168 | | |
| September | 15,059 | 13,236 | 13,064 | 1,543 | 376 | 329 | | |
| October | 19,230 | 17,317 | 8,251 | 428 | 805 | 1,294 | | |
| November | 20,833 | 18,440 | 9,365 | 400 | 577 | 317 | | |
| December | 16,328 | 14,849 | 6,757 | 304 | 1,362 | 553 | | |
| Total | 199,168 | 173,589 | 142,256 | 36,024 | 8,703 | 13,876 | | |

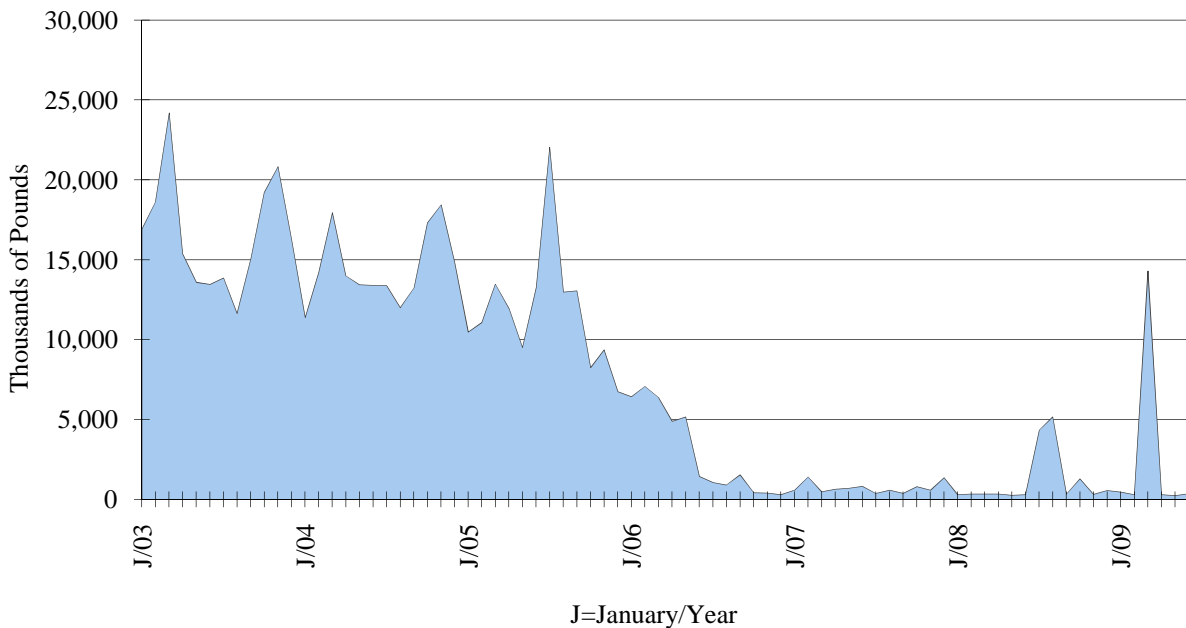
SOURCE: Alaska Department of Transportation and Public Facilities, Fairbanks International Airport, "Fairbanks International Airport Statistical Report," 2003-2009.

NOTE: Air France terminated service at FAI in April 2003. Lufthansa German Air Cargo reduced frequency of service to FAI starting October 2005 and terminated service May 2006. Cargolux reduced frequency of service to FAI starting January 2005 and terminated service October 2006. Volga-Dnepr Airlines started routing their AN124 tech stop charter operations through FAI as of September 2006. On average FAI should see between 70-100 operations from Volga-Dnepr Airlines per year.

^ International Airlines: Evergreen and Volga-Dnepr made non-routine stops at FAI in July-August 2008. UPS made a sizeable stop in March 2009.

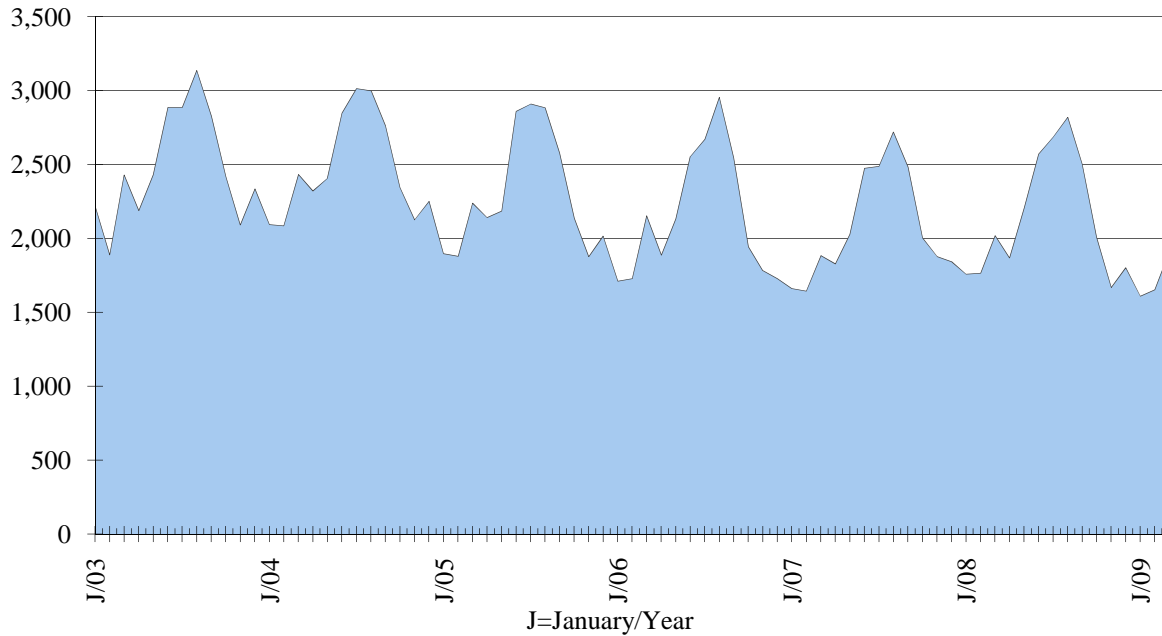
* Numbers are preliminary and may be subject to revision.

FAIRBANKS INTERNATIONAL AIRPORT TRANSIT FREIGHT
2003-2009



Economic Indicators

FAIRBANKS INTERNATIONAL AIRPORT REVENUE LANDINGS
2003-2009



FAIRBANKS INTERNATIONAL AIRPORT REVENUE LANDINGS*
2003-2009

| | 2003 | 2004 | 2005 | 2006 | 2007 | 2008 | 2009 | % Change 2008-09 |
|--------------|---------------|---------------|---------------|---------------|---------------|---------------|-------|---------------------|
| January | 2,215 | 2,094 | 1,897 | 1,711 | 1,662 | 1,758 | 1,610 | -8% |
| February | 1,889 | 2,085 | 1,879 | 1,728 | 1,644 | 1,766 | 1,653 | -6% |
| March | 2,430 | 2,433 | 2,239 | 2,154 | 1,885 | 2,019 | 1,907 | -6% |
| April | 2,189 | 2,321 | 2,141 | 1,887 | 1,828 | 1,868 | 1,836 | -2% |
| May | 2,431 | 2,407 | 2,185 | 2,132 | 2,028 | 2,208 | 2,039 | -8% |
| June | 2,887 | 2,849 | 2,860 | 2,554 | 2,476 | 2,571 | 2,370 | -8% |
| July | 2,887 | 3,013 | 2,909 | 2,671 | 2,488 | 2,686 | | |
| August | 3,137 | 2,999 | 2,883 | 2,955 | 2,720 | 2,820 | | |
| September | 2,827 | 2,761 | 2,578 | 2,545 | 2,483 | 2,503 | | |
| October | 2,419 | 2,345 | 2,136 | 1,944 | 2,005 | 2,009 | | |
| November | 2,091 | 2,125 | 1,877 | 1,782 | 1,878 | 1,668 | | |
| December | 2,336 | 2,251 | 2,016 | 1,729 | 1,843 | 1,802 | | |
| Total | 29,738 | 29,683 | 27,600 | 25,792 | 24,940 | 25,678 | | |

SOURCE: Alaska Department of Transportation and Public Facilities, Fairbanks International Airport, "Fairbanks International Airport Statistical Report," 2003-2009

* Numbers are preliminary and may be subject to revision.

Economic Indicators

FAIRBANKS INTERNATIONAL AIRPORT PASSENGERS*

2003-2009

| | 2003 | 2004 | 2005 | 2006 | 2007 | 2008 | 2009 | % Change 2008-09 |
|-----------------|----------------|----------------|----------------|----------------|----------------|----------------|--------|---------------------|
| Incoming | | | | | | | | |
| January | 29,920 | 29,429 | 31,480 | 31,035 | 33,903 | 33,333 | 32,118 | -4% |
| February | 24,284 | 27,882 | 27,554 | 27,305 | 28,548 | 31,801 | 29,051 | -9% |
| March | 30,694 | 33,213 | 33,276 | 30,352 | 33,825 | 35,869 | 33,266 | -7% |
| April | 24,520 | 27,362 | 27,323 | 27,373 | 29,406 | 30,386 | 28,065 | -8% |
| May | 34,618 | 39,690 | 38,176 | 41,968 | 49,863 | 45,270 | 40,536 | -10% |
| June | 48,532 | 56,908 | 57,662 | 57,856 | 58,926 | 60,012 | 51,532 | -14% |
| July | 54,782 | 60,481 | 59,710 | 59,698 | 61,865 | 60,249 | | |
| August | 53,035 | 59,876 | 59,288 | 61,360 | 62,223 | 64,713 | | |
| September | 33,907 | 34,785 | 35,697 | 36,718 | 38,013 | 39,664 | | |
| October | 28,727 | 31,693 | 32,115 | 30,314 | 33,784 | 31,565 | | |
| November | 29,695 | 30,564 | 29,762 | 28,865 | 32,184 | 28,568 | | |
| December | 31,120 | 31,594 | 30,479 | 29,859 | 32,339 | 31,534 | | |
| Total | 423,834 | 463,477 | 462,522 | 462,703 | 494,879 | 492,964 | | |
| Outgoing | | | | | | | | |
| January | 26,670 | 26,653 | 27,245 | 27,801 | 28,912 | 29,821 | 29,763 | 0% |
| February | 24,648 | 27,547 | 27,640 | 27,887 | 28,144 | 31,495 | 28,742 | -9% |
| March | 33,033 | 34,587 | 33,658 | 34,783 | 34,049 | 35,259 | 32,379 | -8% |
| April | 23,716 | 26,848 | 28,038 | 27,723 | 28,648 | 29,871 | 27,517 | -8% |
| May | 31,004 | 35,662 | 34,416 | 37,112 | 37,992 | 40,420 | 35,530 | -12% |
| June | 44,576 | 49,759 | 54,138 | 52,090 | 54,648 | 54,765 | 48,923 | -11% |
| July | 50,923 | 56,148 | 55,375 | 52,512 | 55,668 | 58,257 | | |
| August | 48,886 | 54,616 | 55,894 | 56,570 | 57,332 | 58,267 | | |
| September | 37,647 | 40,220 | 40,922 | 42,548 | 43,330 | 44,796 | | |
| October | 30,604 | 33,623 | 33,664 | 31,312 | 35,169 | 34,349 | | |
| November | 30,921 | 32,142 | 31,272 | 29,236 | 32,430 | 28,909 | | |
| December | 35,331 | 38,016 | 35,359 | 35,735 | 35,697 | 34,171 | | |
| Total | 417,959 | 455,821 | 457,621 | 455,309 | 472,019 | 480,380 | | |

SOURCE: Alaska Department of Transportation & Public Facilities, Fairbanks International Airport, "Fairbanks International Airport Statistical Report," 2003-2009.

NOTE: Numbers do not include passengers in transit.

* Numbers are preliminary and may be subject to revision.

Economic Indicators

ALASKA HIGHWAY STATEWIDE ENTERING PASSENGERS**

Via the Yukon Territory
2003-2009

| | 2003 | 2004* | 2005 | 2006 | 2007 | 2008 | 2009 | % Change 2008-09 |
|--------------|----------------|----------------|----------------|----------------|----------------|---------------|--------|---------------------|
| January | 3,125 | 2,930 | 2,212 | 2,064 | 2,733 | 2,108 | 2,388 | 13% |
| February | 2,775 | 3,025 | 2,259 | 2,259 | 2,301 | 2,365 | 2,442 | 3% |
| March | 3,318 | 3,760 | 3,464 | 3,355 | 3,806 | 3,681 | 4,306 | 17% |
| April | 6,305 | 6,004 | 5,359 | 5,257 | 5,529 | 5,168 | 4,899 | -5% |
| May | 12,074 | 12,146 | 13,031 | 12,261 | 13,386 | 11,033 | 12,447 | 13% |
| June | 29,247 | 23,139 | 29,231 | 26,560 | 28,967 | 17,887 | 22,929 | 28% |
| July | 31,183 | 22,335 | 31,982 | 24,925 | 27,583 | 16,946 | | |
| August | 24,930 | 17,633 | 23,641 | 20,296 | 21,776 | 13,246 | | |
| September | 11,959 | 9,436 | 8,993 | 9,998 | 8,584 | 5,987 | | |
| October | 4,920 | 4,288 | 3,888 | 4,149 | 3,549 | 3,832 | | |
| November | 3,780 | 3,305 | 2,875 | 3,027 | 2,806 | 2,096 | | |
| December | 2,659 | 2,323 | 2,153 | 2,451 | 2,456 | 2,145 | | |
| Total | 136,275 | 110,324 | 129,088 | 116,602 | 123,476 | 86,494 | | |

SOURCE: U.S. Department of Justice, Immigration and Naturalization Service, District 32, personal communications, 2003-2009.

NOTE: This entry point includes statewide travel for automobiles on the Alaska Highway and, during the summer, the Taylor Highway (Poker Creek). 1st Qtr 2009 Homeland Security changes data release policy creating a lag in data release.

* Revised 2nd Qtr. 2004 in Nov. '04; Poker Creek updates added to 2007, Nov. 2007.; formula corrected for 2008.

** Current year figures subject to revisions.

ALASKA HIGHWAY STATEWIDE EXITING PASSENGERS**

Via the Yukon Territory
2003-2009

| | 2003 | 2004 | 2005 | 2006 | 2007 | 2008 | 2009 | % Change 2008-09 |
|--------------|----------------|----------------|----------------|----------------|----------------|---------------|--------|---------------------|
| January | 2,503 | 2,068 | 1,707 | 1,712 | 1,873 | 1,783 | 1,491 | -16% |
| February | 2,433 | 2,289 | 1,686 | 1,468 | 1,970 | 1,812 | 2,018 | 11% |
| March | 3,152 | 3,092 | 2,670 | 2,717 | 3,204 | 2,455 | 2,380 | -3% |
| April | 3,841 | 3,805 | 3,596 | 3,200 | 3,701 | 2,608 | 2,884 | 11% |
| May | 7,458 | 8,028 | 6,769 | 3,892 | 7,283 | 6,990 | 7,057 | 1% |
| June | 19,926 | 20,221 | 16,911 | 16,913 | 18,767 | 15,502 | 13,932 | -10% |
| July | 31,157 | 31,426 | 29,665 | 26,855 | 24,747 | 22,729 | | |
| August | 28,978 | 27,004 | 26,884 | 24,114 | 24,601 | 21,827 | | |
| September | 14,317 | 13,661 | 12,914 | 12,236 | 13,657 | 10,585 | | |
| October | 5,662 | 5,589 | 4,747 | 6,403 | 4,827 | 3,657 | | |
| November | 3,328 | 2,987 | 2,111 | 2,997 | 2,387 | 2,054 | | |
| December | 2,620 | 2,085 | 1,983 | 2,283 | 2,326 | 1,573 | | |
| Total | 125,375 | 122,255 | 111,643 | 104,790 | 109,343 | 93,575 | | |

SOURCE: Canadian Customs Border Services, Area Ports, Yukon Government, 2003-2009.

NOTE: This exit point includes statewide travel for automobiles on the Alaska Highway (Beaver Creek) and, during the summer through September 15th, the Taylor Highway (Little Gold).

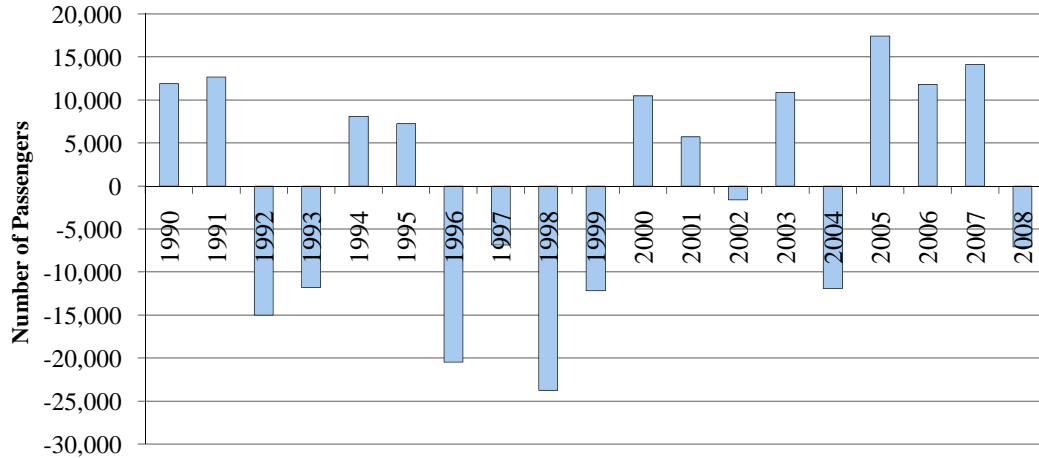
* 3rd Qtr. 2004 revised in December 2004.

** Current year figures subject to revisions.

Economic Indicators

ALASKA HIGHWAY STATEWIDE NET ANNUAL MIGRATION TRENDS

Via the Yukon Territory
1990-2008



SOURCE: U.S. Department of Justice, Immigration and Naturalization Service, District 32, and Customs Border Services, Area Ports, Yukon Government, Canada, personal communications 1990-2009.

ALASKA HIGHWAY STATEWIDE NET MONTHLY MIGRATION

Via the Yukon Territory
2003-2009

| | 2003 | 2004* | 2005 | 2006 | 2007 | 2008 | 2009 |
|------------|---------------|----------------|---------------|---------------|---------------|---------------|-------|
| January | 622 | 862 | 505 | 352 | 860 | 325 | 897 |
| February | 342 | 736 | 573 | 791 | 331 | 553 | 424 |
| March | 166 | 668 | 794 | 638 | 602 | 1,226 | 1,926 |
| April | 2,464 | 2,199 | 1,763 | 2,057 | 1,828 | 2,560 | 2,015 |
| May | 4,616 | 4,118 | 6,262 | 8,369 | 6,103 | 4,043 | 5,390 |
| June | 9,321 | 2,918 | 12,320 | 9,647 | 10,200 | 2,385 | 8,997 |
| July | 26 | -9,091 | 2,317 | -1,930 | 2,836 | -5,783 | |
| August | -4,048 | -9,371 | -3,243 | -3,818 | -2,825 | -8,581 | |
| September | -2,358 | -4,225 | -3,921 | -2,238 | -5,073 | -4,598 | |
| October | -742 | -1,301 | -859 | -2,254 | -1,278 | 175 | |
| November | 452 | 318 | 764 | 30 | 419 | 42 | |
| December | 39 | 238 | 170 | 168 | 130 | 572 | |
| Net | 10,900 | -11,931 | 17,445 | 11,812 | 14,133 | -7,081 | |

SOURCE: U.S. Department of Justice, Immigration and Naturalization Service, District 32, and Customs Border Services, Area Ports, Yukon Government, Canada, personal communications 2002-2009.

NOTE: Numbers denote the difference between the number of passengers entering and exiting statewide Alaska on the Alaska Highway and the Taylor Highway (summer only through September 15th).

* Revised numbers for March-June 2004 revised September 2004.

** Current year figures subject to revisions.

Economic Indicators

HOTEL/MOTEL ROOM RECEIPTS*

Fairbanks North Star Borough
2006-2009

| | 2006 | 2007 | 2008 | 2009 | % Change 2008-09 |
|--------------|---------------------|---------------------|---------------------|--------------|---------------------|
| 1st Quarter | \$4,396,630 | \$5,253,550 | \$4,928,353 | \$5,554,495 | 12.7% |
| 2nd Quarter* | \$13,755,407 | \$14,703,344 | \$15,450,099 | \$11,655,651 | -24.6% |
| 3rd Quarter | \$27,784,543 | \$29,164,266 | \$29,652,248 | | |
| 4th Quarter | \$6,628,268 | \$7,198,573 | \$7,251,731 | | |
| Total | \$52,564,848 | \$56,319,733 | \$57,282,431 | | |

SOURCE: City of Fairbanks, Finance Dept., personal communications 2006-2009. New website for City of Fairbanks bed tax: <http://www.ci.fairbanks.ak.us/departments/clerks/bedtax.php>. FNSB Financial Services, personal communications 2006-2009.

NOTE: Room receipt figures are based on hotel/motel bed tax which is 8%. Receipts are calculated on taxes paid. There is a time lag between collection and reporting of these taxes.

* Numbers revised based on new data from City of Fairbanks and FNSB accrual adjustments, November 2006. FNSB 2nd quarter 2007 accrual adjustment corrected January 2008.

UNIVERSITY OF ALASKA MUSEUM VISITORS

Fairbanks, Alaska
2006-2009

| | 2006 | 2007 | 2008 | 2009 | % Change 2008-09 |
|--------------|---------------|---------------|----------------|--------|---------------------|
| January | 2,014 | 2,436 | 1,955 | 2,236 | 14% |
| February | 2,651 | 4,014 | 3,784 | 4,502 | 19% |
| March | 4,170 | 4,972 | 4,607 | 3,394 | -26% |
| April | 2,733 | 3,271 | 3,503 | 2,328 | -34% |
| May | 7,808 | 7,771 | 7,595 | 5,767 | -24% |
| June | 16,901 | 16,289 | 19,837 | 15,275 | -23% |
| July | 19,410 | 19,877 | 22,709 | | |
| August | 16,398 | 16,322 | 19,369 | | |
| September | 8,996 | 8,392 | 9,215 | | |
| October | 2,328 | 4,149 | 3,517 | | |
| November | 2,581 | 3,268 | 2,146 | | |
| December | 5,038 | 3,762 | 2,532 | | |
| Total | 91,028 | 94,523 | 100,769 | | |

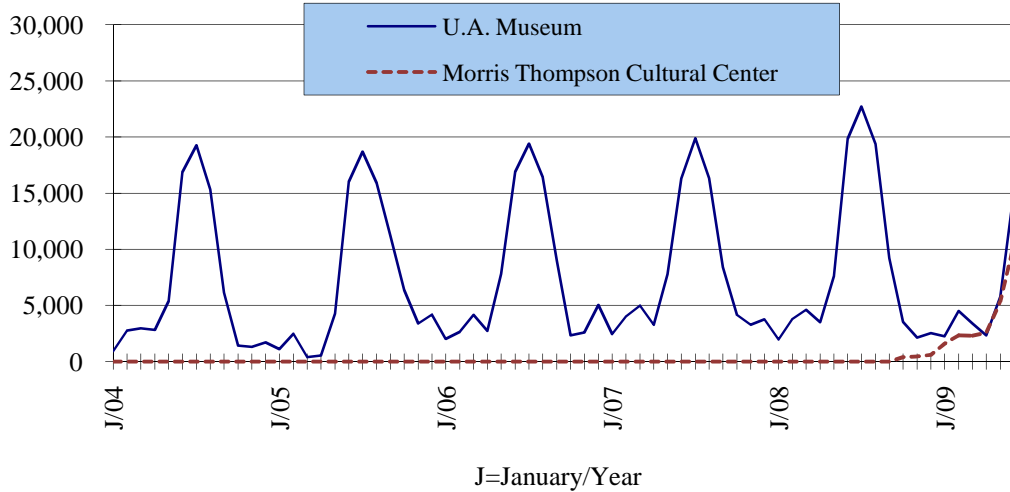
SOURCE: University of Alaska Museum, University of Alaska, Fairbanks, personal communications 2006-2009.

NOTE: 2006 numbers are preliminary and may be subject to revision. The Museum was closed all of March-April and half of May 2005, but counted store and lecture attendees. The percent change between (March-May) 2005 and 2006 reflects the previous years loss of visitors due to construction down time.

Economic Indicators

**UNIVERSITY OF ALASKA MUSEUM &
MORRIS THOMPSON CULTURAL AND VISITOR CENTER**

Fairbanks, Alaska
2004-2009



MORRIS THOMPSON CULTURAL AND VISITOR CENTER

Fairbanks, Alaska
2004-2009

| Month | 2004 | 2005 | 2006 | 2007 | 2008* | 2009 | % Change 2008-09 |
|--------------|--|----------|----------|----------|--------------|--------|---------------------|
| January | - | - | - | - | - | 1,581 | - |
| February | - | - | - | - | - | 2,334 | - |
| March | - | - | - | - | - | 2,298 | - |
| April | <p align="center">NOTE: APLIC moved to and partnered with other agencies at the new Morris Thompson Cultural and Visitor Center in September 2008. From October 2008 to present the counts reported are recorded at the entry for all Cultural Center partners.</p> | | | | - | 2,573 | - |
| May | | | | | - | 5,366 | - |
| June | | | | | - | 10,489 | - |
| July | | | | | - | - | - |
| August | | | | | - | - | - |
| September | | | | | - | - | - |
| October | - | - | - | - | 400 | - | |
| November | - | - | - | - | 450 | - | |
| December | - | - | - | - | 600 | - | |
| Total | 0 | 0 | 0 | 0 | 1,450 | | |

SOURCE: The Morris Thompson Cultural and Visitor Center Administration Office, information can be found at <http://www.morristhompsoncenter.org>, personal communications 2008-2009. Admission is free.

NOTE: The Morris Thompson Cultural and Visitor Center partners include APLIC, (FCVB) Fairbanks Convention and Visitor Bureau, the Alaska Geographic Store, Denakkanaaga, the regional Alaska Native Elder's organization, and Tanana Chiefs Conference – Cultural Program. One headcount per visitor is recorded at the entry for all Cultural Center partners.

The (APLIC) Alaska Public Lands Information Center is a cooperative effort of the Alaska Division of Tourism, Alaska Division of Parks and Outdoor Recreation, Alaska Department of Fish and Game, Bureau of Land Management, National Park Service, USDA Forest Service, Fish and Wildlife Service, and U.S. Geological Survey.

Economic Indicators

ASSESSED VALUE OF PROPERTY

Fairbanks, North Pole & the Fairbanks North Star Borough
1991-2009

| | City of Fairbanks | City of North Pole | Major Mining | FNSB*^ |
|-----------------------------|--|--------------------|--------------|-------------|
| | ----- Assessed Value (Millions of Dollars) ----- | | | |
| 1991 | \$893.1 | \$148.2 | - | \$2,786.0 |
| 1992 | \$912.5 | \$147.0 | - | \$2,851.5 |
| 1993 | \$934.7 | \$146.8 | - | \$2,905.7 |
| 1994 | \$990.3 | \$155.8 | - | \$2,976.2 |
| 1995 | \$1,025.1 | \$158.5 | - | \$3,090.8 |
| 1996 | \$1,055.0 | \$159.3 | - | \$3,282.8 |
| 1997 | \$1,084.4 | \$171.4 | \$261.3 | \$3,538.3 |
| 1998 | \$1,136.2 | \$189.9 | \$254.3 | \$3,720.4 |
| 1999 | \$1,180.0 | \$246.8 | \$251.8 | \$4,018.4 |
| 2000 | \$1,253.3 | \$248.1 | \$243.7 | \$4,184.5 |
| 2001 | \$1,283.3 | \$249.0 | \$242.5 | \$4,340.8 |
| 2002 | \$1,361.9 | \$255.4 | \$231.1 | \$4,568.5 |
| 2003 | \$1,449.8 | \$265.7 | \$231.1 | \$4,854.8 |
| 2004 | \$1,583.9 | \$273.7 | \$231.1 | \$5,239.4 |
| 2005 | \$1,746.4 | \$258.9 | \$231.3 | \$5,739.6 |
| 2006 | \$1,938.8 | \$276.4 | \$224.6 | \$6,368.1 |
| 2007 | \$2,101.4 | \$299.9 | \$221.0 | \$7,043.5 |
| 2008 | \$2,264.1 | \$314.0 | \$220.0 | \$7,596.4 |
| 2009 | \$2,370.0 | \$325.5 | \$220.0 | \$7,982.2 |
| % Change 2008-09 | 4.7% | 3.7% | 0.0% | 5.1% |

SOURCE: Fairbanks North Star Borough, Assessing Dept., personal communications, 1991-2009.

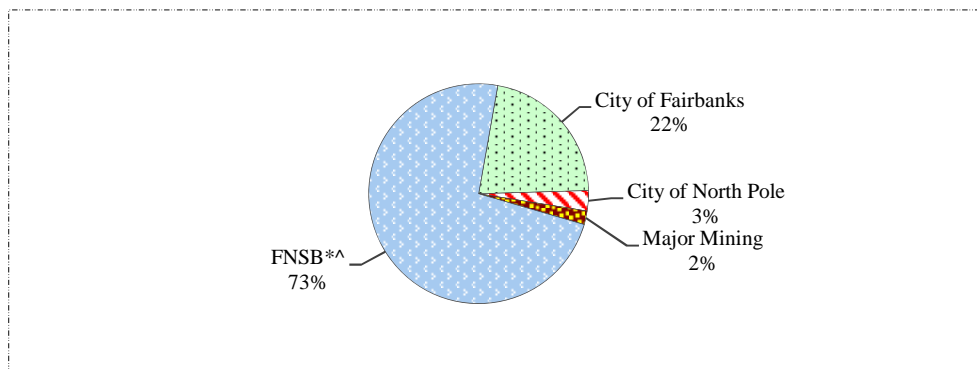
* Includes assessed values for City of Fairbanks and City of North Pole and major mining operations.

^ Preliminary value based on certified assessed value and supplemental tax roll, FNSB 1996.

NOTE: Introduced major mining category beginning with 1997 numbers.

ASSESSED VALUE OF PROPERTY

Fairbanks, North Pole & the Fairbanks North Star Borough
2009



Economic Indicators

ASSESSED VALUE OF PIPELINE RELATED PROPERTY

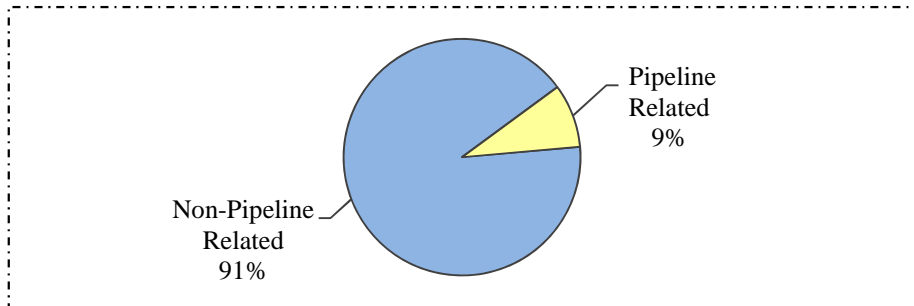
Fairbanks North Star Borough
1983-2009

| | FNSB Total* | Non-Pipeline Related* | Pipeline Related | % Pipeline |
|--|-------------|--------------------------|---------------------|---------------|
| ----- Assessed Value (Millions of Dollars) ----- | | | | |
| 1983 | \$2,529.0 | \$1,888.2 | \$640.8 | 25.3% |
| 1984 | \$2,719.6 | \$2,092.0 | \$627.6 | 23.1% |
| 1985 | \$3,228.9 | \$2,598.4 | \$630.5 | 19.5% |
| 1986 | \$3,444.0 | \$2,832.3 | \$611.7 | 17.8% |
| 1987 | \$3,506.7 | \$2,933.7 | \$573.0 | 16.3% |
| 1988 | \$3,130.2 | \$2,591.5 | \$538.7 | 17.2% |
| 1989 | \$2,962.3 | \$2,410.9 | \$551.4 | 18.6% |
| 1990 | \$2,784.5 | \$2,306.7 | \$477.8 | 17.2% |
| 1991 | \$2,786.0 | \$2,332.2 | \$453.8 | 16.3% |
| 1992 | \$2,851.5 | \$2,424.7 | \$426.8 | 15.0% |
| 1993 | \$2,905.7 | \$2,497.0 | \$408.7 | 14.1% |
| 1994 | \$2,976.2 | \$2,617.1 | \$359.1 | 12.1% |
| 1995 | \$3,090.8 | \$2,773.1 | \$317.7 | 10.3% |
| 1996 | \$3,282.8 | \$2,976.2 | \$306.6 | 9.3% |
| 1997 | \$3,538.3 | \$3,238.3 | \$300.0 | 8.5% |
| 1998 | \$3,720.4 | \$3,433.8 | \$286.6 | 7.7% |
| 1999 | \$4,018.4 | \$3,714.8 | \$303.6 | 7.6% |
| 2000 | \$4,184.5 | \$3,926.3 | \$258.2 | 6.2% |
| 2001 | \$4,340.8 | \$4,063.2 | \$277.6 | 6.4% |
| 2002 | \$4,568.5 | \$4,305.1 | \$263.4 | 5.8% |
| 2003 | \$4,854.8 | \$4,583.9 | \$270.8 | 5.6% |
| 2004 | \$5,239.4 | \$4,968.2 | \$271.2 | 5.2% |
| 2005 | \$5,739.6 | \$5,464.3 | \$275.3 | 4.8% |
| 2006 | \$6,368.1 | \$5,990.3 | \$377.8 | 5.9% |
| 2007 | \$7,043.5 | \$6,674.0 | \$369.5 | 5.2% |
| 2008 | \$7,596.4 | \$7,087.6 | \$508.8 | 6.7% |
| 2009 | \$7,982.2 | \$7,288.1 | \$694.1 | 8.7% |
| % Chg 2008-09 | 5.1% | 2.8% | 36.4% | |

SOURCE: Fairbanks North Star Borough, Assessing Dept., personal communications 1982-2009.
* Preliminary value based on certified assessed value and supplemental tax roll, FNSB 1996.

ASSESSED VALUE OF PIPELINE RELATED PROPERTY

Fairbanks North Star Borough
2009



EMPLOYMENT

CIVILIAN LABOR FORCE UNEMPLOYMENT RATES*

Fairbanks MSA, Alaska & the United States
2004-2009

| | | 2004 | 2005 | 2006 | 2007 | 2008 | 2009 |
|----------|----------------|------------|------------|------------|------------|------------|------|
| F | January | 7.9 | 7.0 | 6.7 | 6.3 | 6.5 | 8.7 |
| A | February | 8.0 | 7.4 | 7.0 | 6.3 | 6.5 | 8.5 |
| I | March | 7.5 | 6.5 | 6.4 | 5.7 | 6.1 | 8.3 |
| R | April | 6.8 | 6.2 | 6.1 | 5.5 | 5.7 | 7.2 |
| B | May | 6.1 | 5.4 | 5.4 | 4.9 | 5.6 | 7.1 |
| A | June | 6.9 | 5.8 | 5.8 | 5.8 | 6.3 | 7.6 |
| N | July | 5.7 | 5.1 | 5.3 | 5.1 | 5.7 | |
| K | August | 5.3 | 4.7 | 4.9 | 4.8 | 5.5 | |
| S | September | 5.4 | 5.2 | 5.0 | 5.0 | 5.5 | |
| | October | 5.4 | 5.2 | 4.6 | 4.6 | 5.9 | |
| M | November | 5.9 | 5.8 | 5.1 | 5.2 | 6.3 | |
| S | December | 6.2 | 6.0 | 5.3 | 5.8 | 7.1 | |
| A | Average | 6.4 | 5.8 | 5.6 | 5.4 | 6.1 | |
| | January | 8.7 | 8.0 | 7.7 | 7.1 | 7.2 | 8.9 |
| | February | 8.7 | 8.4 | 8.1 | 7.2 | 7.3 | 9.2 |
| | March | 8.4 | 7.6 | 7.4 | 6.6 | 7.0 | 9.2 |
| A | April | 7.8 | 7.1 | 7.1 | 6.4 | 6.6 | 8.3 |
| L | May | 7.1 | 6.5 | 6.4 | 5.8 | 6.4 | 8.0 |
| A | June | 7.6 | 6.7 | 6.5 | 6.1 | 6.6 | 8.3 |
| S | July | 6.5 | 6.0 | 5.9 | 5.5 | 6.0 | |
| K | August | 6.3 | 5.8 | 5.6 | 5.4 | 6.0 | |
| A | September | 6.5 | 6.3 | 5.7 | 5.6 | 6.1 | |
| | October | 6.6 | 6.3 | 5.5 | 5.5 | 6.3 | |
| | November | 7.1 | 7.0 | 6.1 | 6.0 | 6.8 | |
| | December | 7.4 | 7.2 | 6.5 | 6.7 | 7.6 | |
| | Average | 7.4 | 6.9 | 6.5 | 6.2 | 6.7 | |
| U | January | 6.3 | 5.7 | 5.1 | 5.0 | 5.4 | 8.5 |
| N | February | 6.0 | 5.8 | 5.1 | 4.9 | 5.2 | 8.9 |
| I | March | 6.0 | 5.4 | 4.8 | 4.5 | 5.2 | 9.0 |
| T | April | 5.4 | 4.9 | 4.5 | 4.3 | 4.8 | 8.6 |
| E | May | 5.3 | 4.9 | 4.4 | 4.3 | 5.2 | 9.1 |
| D | June | 5.8 | 5.2 | 4.8 | 4.7 | 5.7 | 9.7 |
| | July | 5.7 | 5.2 | 5.0 | 4.9 | 6.0 | |
| S | August | 5.4 | 4.9 | 4.6 | 4.6 | 6.1 | |
| T | September | 5.1 | 4.8 | 4.4 | 4.5 | 6.0 | |
| A | October | 5.1 | 4.6 | 4.1 | 4.4 | 6.1 | |
| T | November | 5.2 | 4.8 | 4.3 | 4.5 | 6.5 | |
| E | December | 5.1 | 4.6 | 4.3 | 4.8 | 7.1 | |
| S | Average | 5.5 | 5.1 | 4.6 | 4.6 | 5.8 | |

SOURCES: Alaska Department of Labor, Research and Analysis Section, Anchorage, Alaska, website: www.labor.state.ak.us, and personal communications 2004-2009. U.S. Department of Labor, Bureau of Labor Statistics, *Current Population Survey*, and website: www.bls.gov, 2004-2009. Benchmark 2008.

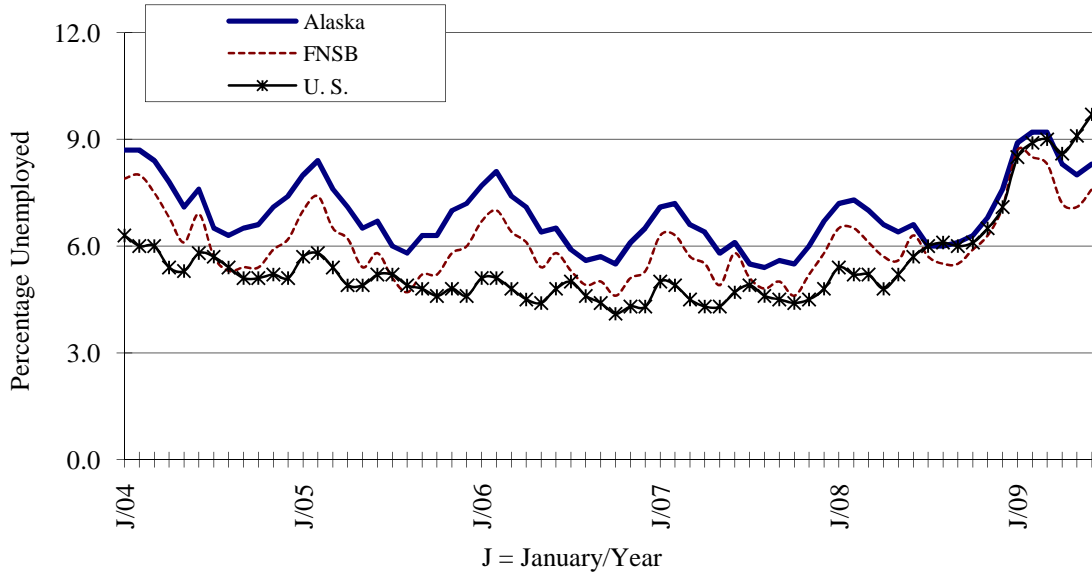
NOTE: Rates presented are "not seasonally adjusted". Local data prior to 2000 is not comparable with data from 2000 forward due to the way the labor force stats are calculated for boroughs and census areas.

* May be subject to revision.

Employment

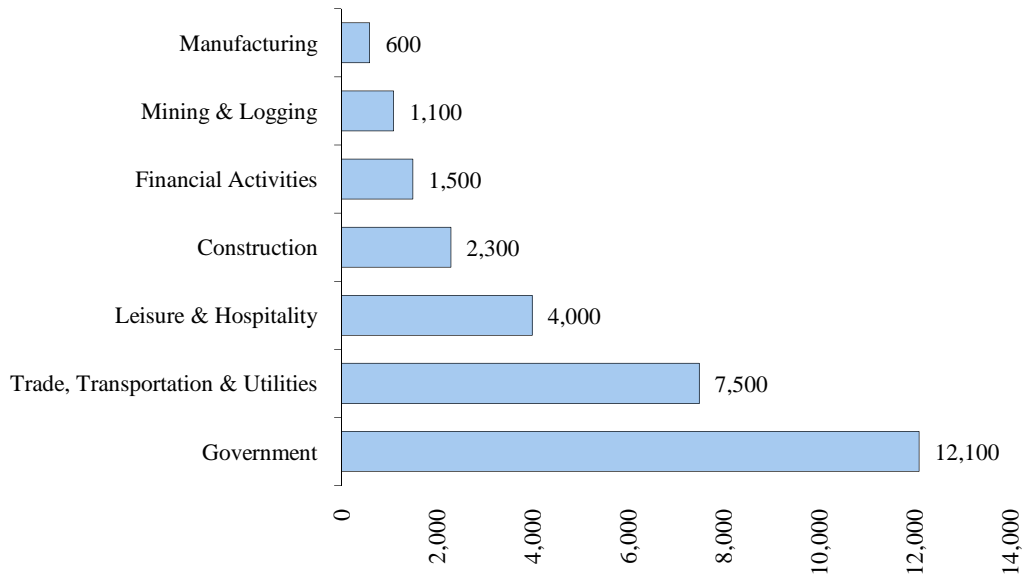
CIVILIAN LABOR FORCE UNEMPLOYMENT RATES

State of Alaska, FNSB, the United States
2004-2009



AVERAGE MONTHLY EMPLOYMENT ESTIMATES BY SECTOR

Fairbanks North Star Borough
Second Quarter Average 2009



Employment

AVERAGE MONTHLY EMPLOYMENT ESTIMATES BY INDUSTRY

Fairbanks North Star Borough (MSA¹)
2009

| Industry | 2009 | | 2009 | 2008 | % Change 2008-09 |
|--|---------------|---------------|-----------------|-----------------|---------------------|
| | 1st Quarter | 2nd Quarter | Year-to-date | Year-to-date | |
| Reporting Period | Jan-Mar | Apr-Jun | 2009 Jan-Jun | 2008 Jan-Jun | Jan-Jun |
| Mining and Logging³ | 1,000 | 1,100 | 1,100 | 1,000 | 10.0% |
| Construction | 1,900 | 2,800 | 2,300 | 2,500 | -8.0% |
| Manufacturing | 600 | 700 | 600 | 700 | -14.3% |
| Trade/Transportation/Utilities | 7,300 | 7,600 | 7,500 | 7,500 | 0.0% |
| Wholesale Trade | 600 | 600 | 600 | 600 | 0.0% |
| Retail Trade | 4,500 | 4,600 | 4,600 | 4,600 | 0.0% |
| Trans/Warehouse/Utilities | 2,300 | 2,400 | 2,300 | 2,300 | 0.0% |
| Information | 600 | 600 | 600 | 600 | 0.0% |
| Financial Activities | 1,400 | 1,500 | 1,500 | 1,600 | -6.3% |
| Professional & Business Svcs | 2,000 | 2,500 | 2,300 | 2,200 | 4.5% |
| Educational & Health Services | 4,500 | 4,500 | 4,500 | 4,300 | 4.7% |
| Health Care | 3,500 | 3,500 | 3,500 | 3,300 | 6.1% |
| Leisure & Hospitality | 3,600 | 4,400 | 4,000 | 4,100 | -2.4% |
| Other Services | 1,200 | 1,200 | 1,200 | 1,300 | -7.7% |
| Government | 11,900 | 12,200 | 12,100 | 12,000 | 0.8% |
| Federal Government | 3,400 | 3,600 | 3,500 | 3,500 | 0.0% |
| State Government | 5,200 | 5,400 | 5,300 | 5,300 | 0.0% |
| Local Government ² | 3,300 | 3,200 | 3,300 | 3,300 | 0.0% |
| Total Nonfarm | 36,100 | 39,000 | 37,600 | 37,700 | -0.3% |

SOURCE: Alaska Department of Labor and Workforce Development, Research and Analysis Section, and the U.S. Department of Labor Statistics. State website: <http://almis.labor.state.ak.us>, 2009.

NOTE: Data provided are subject to change. Employment reporting format has changed because Fairbanks became a metropolitan area in 2003 and 2004. Please note that rounding is to nearest 100.

- Benchmark date: February 2009 for the 2008 dataset.

- Nonfarm Wage & Salary excludes self-employed workers, fishers, domestics, and unpaid family workers.

- Government includes employees of public school systems and the University of Alaska.

- Beginning January 2001, wage and salary employment estimates were published under a new classification system. The Standard Industrial Classification system (SIC) has been replaced by the North American Industry Classification System (NAICS). Data prior to 2001 are comparable only at the Total Nonfarm and Government levels.

¹ Metropolitan Statistical Area

² As of January 2001, certain federally-recognized tribal entities were moved to Local Government, which created a series break for Total Government and Local Government. Please see the April 2002 Alaska Economic Trends publication for a detailed explanation.

³ This category was previously called "Natural Resources and Mining". The change is in name only; the industries it includes remain the same.

Employment

ANNUAL AVERAGE MONTHLY EMPLOYMENT BY INDUSTRY

Fairbanks North Star Borough
2005-2008

| Industry | 2005 | 2006 | 2007 | 2008 | % Change 2007-08 |
|---|---------------|---------------|---------------|---------------|---------------------|
| Natural Resources & Mining | 1,211 | 1,346 | 1,153 | 1,100 | -4.6% |
| Agriculture, Forestry, Fishing, Hunting | 33 | 45 | 36 | 42 | 16.7% |
| Mining | 1,178 | 1,300 | 1,116 | 1,058 | -5.2% |
| Construction | 2,911 | 2,764 | 2,756 | 2,765 | 0.3% |
| Construction of Buildings | 932 | 860 | 849 | 804 | -5.3% |
| Heavy Construction | 253 | 327 | 263 | 206 | -21.7% |
| Special Trade Contractors | 1,726 | 1,576 | 1,644 | 1,755 | 6.8% |
| Manufacturing | 622 | 632 | 653 | 649 | -0.6% |
| Trade, Transportation & Utilities | 7,805 | 7,744 | 7,673 | 7,701 | 0.4% |
| Wholesale Trade | 633 | 652 | 663 | 652 | -1.7% |
| Retail Trade | 4,649 | 4,671 | 4,656 | 4,658 | 0.0% |
| General Merchandise Stores | 1,347 | 1,261 | 1,268 | 1,388 | 9.5% |
| Food & Beverage | 438 | 444 | 450 | 486 | 8.0% |
| Transportation & Warehousing | 2,226 | 2,097 | 2,038 | 2,029 | -0.4% |
| Air Transportation | 667 | 612 | 609 | 650 | 6.7% |
| Transit & Ground Passenger | 193 | 195 | 194 | - | - |
| Information | 575 | 593 | 564 | 588 | 4.3% |
| Telecommunication | 365 | 351 | 296 | 317 | 7.1% |
| Financial Activities | 1,402 | 1,575 | 1,597 | 1,534 | -3.9% |
| Finance & Insurance | 800 | 834 | 875 | 894 | 2.2% |
| Credit Intermediation, etc. | 480 | 502 | 519 | 536 | 3.3% |
| Real Estate, Renting & Leasing | 602 | 741 | 722 | 641 | -11.2% |
| Real Estate | 354 | 503 | 465 | 384 | -17.4% |
| Professional & Business Services | 2,117 | 2,098 | 2,223 | 2,341 | 5.3% |
| Professional, Scientific, Technical Services | 1,067 | 1,024 | 1,089 | 1,197 | 9.9% |
| Management of Companies & Enterprises | 48 | 51 | 40 | - | - |
| Administrative & Waste Services | 1,002 | 1,023 | 1,095 | - | - |
| Educational & Health Services | 4,194 | 4,277 | 4,239 | 4,376 | 3.2% |
| Health Care & Social Assistance | 4,052 | 4,143 | 4,096 | 4,226 | 3.2% |
| Leisure & Hospitality | 4,137 | 4,109 | 4,316 | 4,161 | -3.6% |
| Accommodation | 1,131 | 1,024 | 1,061 | 1,051 | -0.9% |
| Food Services & Drinking Places | 2,527 | 2,605 | 2,777 | 2,653 | -4.5% |
| Other Services | 1,361 | 1,317 | 1,287 | 1,245 | -3.3% |
| Membership Organizations, etc. | 647 | 628 | 607 | 602 | -0.8% |
| Repair & Maintenance | 486 | 473 | 456 | 439 | -3.7% |
| Government | 11,552 | 11,621 | 11,732 | 11,789 | 0.5% |
| Federal Government | 3,353 | 3,381 | 3,450 | 3,472 | 0.6% |
| State Government | 5,197 | 5,214 | 5,233 | 5,251 | 0.3% |
| Local Government | 3,002 | 3,026 | 3,049 | 3,066 | 0.6% |
| Unclassified Establishments | 13 | 52 | 36 | 11 | -69.4% |
| Total Industries | 37,898 | 38,128 | 38,228 | 38,261 | 0.1% |

SOURCE: Alaska Department of Labor and Workforce Development, Research and Analysis Section; *Quarterly Census of Employment & Wages* aka *Employment & Earnings Summary*, 2008 (data are preliminary and subject to revision).

NOTE: Blanks in the Total Earnings & Avg Mo Earnings columns due to confidentiality; data are suppressed.

Employment

ANNUAL AVERAGE MONTHLY WAGE BY INDUSTRY

Fairbanks North Star Borough
2005-2008

| Industry | 2005 | 2006 | 2007 | 2008 | % Change 2007-08 |
|--|----------------|----------------|----------------|----------------|---------------------|
| Natural Resources & Mining | \$6,159 | \$6,721 | \$6,448 | \$6,993 | 8.5% |
| Agriculture, Forestry, Fishing, Hunting | NA | \$1,602 | \$1,837 | \$1,695 | -7.7% |
| Mining | NA | \$6,899 | \$6,598 | \$7,201 | 9.1% |
| Construction | \$4,695 | \$4,893 | \$5,223 | \$5,625 | 7.7% |
| Construction of Buildings | \$4,221 | \$4,440 | \$4,834 | \$5,273 | 9.1% |
| Heavy Construction | \$5,696 | \$6,100 | \$6,036 | \$6,493 | 7.6% |
| Special Trade Contractors | \$4,804 | \$4,889 | \$5,294 | \$5,684 | 7.4% |
| Manufacturing | \$3,740 | \$4,168 | \$4,122 | \$4,212 | 2.2% |
| Trade, Transportation & Utilities | \$2,936 | \$3,109 | \$3,189 | \$3,276 | 2.7% |
| Wholesale Trade | \$3,434 | \$3,491 | \$3,525 | \$3,809 | 8.1% |
| Retail Trade | \$2,263 | \$2,353 | \$2,444 | \$2,475 | 1.3% |
| General Merchandise Stores | \$2,003 | \$2,184 | \$2,264 | \$2,325 | 2.7% |
| Food & Beverage | \$2,145 | \$2,180 | \$2,273 | \$2,274 | 0.0% |
| Transportation & Warehousing | \$3,849 | \$4,266 | \$4,358 | \$4,443 | 2.0% |
| Air Transportation | \$3,282 | \$3,409 | \$3,471 | \$3,467 | -0.1% |
| Transit & Ground Passenger | - | - | - | - | - |
| Information | \$3,992 | \$3,962 | \$4,042 | \$4,212 | 4.2% |
| Telecommunication | \$5,004 | \$5,010 | \$5,272 | \$5,166 | -2.0% |
| Financial Activities | \$3,163 | \$3,512 | \$3,568 | \$3,611 | 1.2% |
| Finance & Insurance | \$3,453 | \$3,678 | \$3,830 | \$3,828 | -0.1% |
| Credit Intermediation, etc. | \$3,244 | \$3,297 | \$3,446 | \$3,419 | -0.8% |
| Real Estate, Renting & Leasing | \$2,776 | \$3,325 | \$3,252 | \$3,308 | 1.7% |
| Real Estate | \$2,763 | \$3,393 | \$3,350 | \$3,165 | -5.5% |
| Professional & Business Services | \$2,983 | \$3,105 | \$3,321 | \$3,561 | 7.2% |
| Professional, Scientific, Technical Services | \$3,547 | \$3,573 | \$3,617 | \$3,985 | 10.2% |
| Management of Companies & Enterprises | \$6,154 | \$7,119 | - | - | - |
| Administrative & Waste Services | \$2,230 | \$2,436 | - | - | - |
| Educational & Health Services | \$3,008 | \$3,085 | \$3,200 | \$3,387 | 5.8% |
| Health Care & Social Assistance | \$3,054 | \$3,118 | \$3,234 | \$3,425 | 5.9% |
| Leisure & Hospitality | \$1,279 | \$1,389 | \$1,426 | \$1,484 | 4.1% |
| Accommodation | \$1,844 | \$2,158 | \$2,259 | \$2,312 | 2.3% |
| Food Services & Drinking Places | \$1,058 | \$1,136 | \$1,155 | \$1,210 | 4.8% |
| Other Services | \$2,124 | \$2,212 | \$2,213 | \$2,278 | 2.9% |
| Membership Organizations, etc. | \$1,747 | \$1,853 | \$1,823 | \$1,868 | 2.5% |
| Repair & Maintenance | \$2,942 | \$3,054 | \$3,064 | \$3,150 | 2.8% |
| Government | \$3,544 | \$3,670 | \$3,832 | \$3,948 | 3.0% |
| Federal Government | \$4,372 | \$4,524 | \$4,762 | \$4,793 | 0.7% |
| State Government | \$3,268 | \$3,394 | \$3,560 | \$3,727 | 4.7% |
| Local Government | \$3,096 | \$3,192 | \$3,247 | \$3,370 | 3.8% |
| Unclassified Establishments | \$1,453 | \$1,816 | \$2,277 | \$3,299 | 44.9% |
| Total Industries | \$3,197 | \$3,363 | \$3,452 | \$3,606 | 4.5% |

SOURCE: Alaska Department of Labor and Workforce Development, Research and Analysis Section; *Quarterly Census of Employment & Wages* fka *Employment & Earnings Summary*, 2008 (data are preliminary and subject to revision).

NOTE: Blanks in the Total Earnings & Avg Mo Earnings columns due to confidentiality; data are suppressed.

HOUSING

APARTMENT / MULTI-PLEX VACANCY RATES

Fairbanks North Star Borough
2005-2009

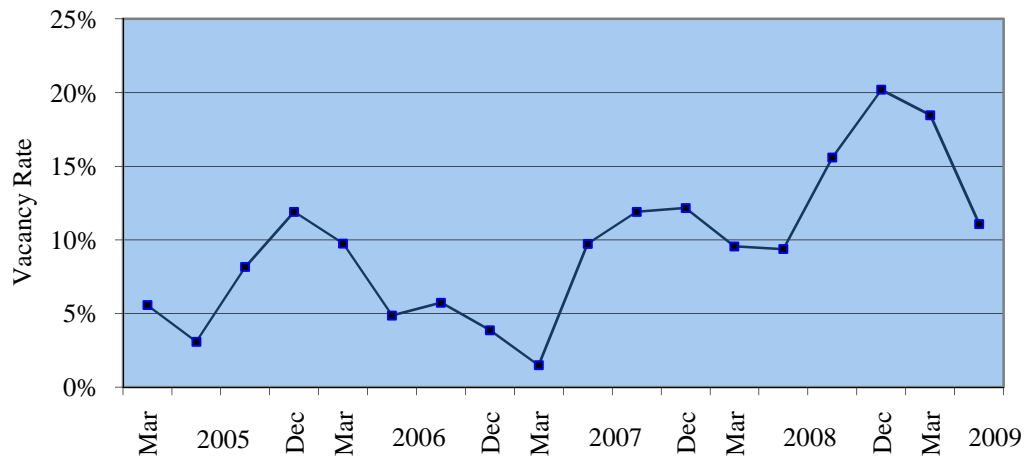
| | 2005 | 2006 | 2007 | 2008 | 2009 |
|-----------|--------------------------|------|------|------|------|
| | -----Percent Vacant----- | | | | |
| March | 5.6 | 9.8 | 1.5 | 9.6 | 18.5 |
| June | 3.1 | 4.9 | 9.7 | 9.4 | 11.1 |
| September | 8.2 | 5.7 | 11.9 | 15.6 | |
| December | 11.9 | 3.9 | 12.2 | 20.2 | |

SOURCE: FNSB Community Research Center Rental Survey, 2005-2009.

NOTE: Vacancy rates are based on a sample of 3,000 to 4,000 rental units and include data for apartments, duplexes, tri-plexes and larger multi-plex rental properties. They do not include single-family houses, mobile homes or cabins. The Ft. Wainwright Army 172nd Stryker Brigade was deployed to Iraq in Fall-Winter 2005-2006, and again Fall-Winter 2008-2009. Changes in seasonal apartment availability may also factor into the Fall and Winter figures. Birchwood Apartments (400 units; 3-5 bdrm.) which were once on-base housing was privatized and started public advertising May 2007. Birchwood Apts. became a part of this survey in June 2007. Alpine Lodge (16 Units: efficiencies) entered the market as seasonal rental housing beginning 4th Quarter 2007. Lazelle Estates (37 Units:3-4 bedrooms) appeared on market survey September 2007.

APARTMENT / MULTI-PLEX VACANCY RATES

Fairbanks North Star Borough
2005-2009



Housing

RENTAL HOUSING UNITS AVAILABLE

Fairbanks North Star Borough
2006-2009

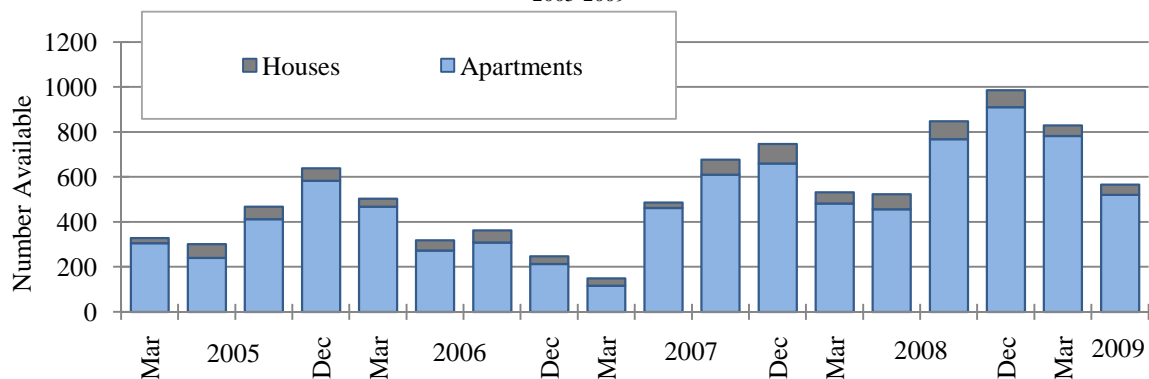
| | ----- Apartments ----- | | | | ----- Houses ----- | | | | Mobile Homes | Cabins | Total Rentals |
|-----------------|------------------------|-------------|------------|-------------|--------------------|-------------|-------------|-------------|--------------|-----------|---------------|
| | Eff. | 1-BR | 2-BR | 3+BR | 1-BR | 2-BR | 3-BR | 4+BR | | | |
| 2006 | | | | | | | | | | | |
| March | 58 | 187 | 159 | 64 | 5 | 15 | 12 | 4 | 9 | 34 | 547 |
| June | 60 | 87 | 95 | 31 | 10 | 8 | 18 | 9 | 13 | 34 | 365 |
| September | 54 | 98 | 120 | 36 | 9 | 18 | 18 | 10 | 16 | 57 | 436 |
| December | 48 | 68 | 66 | 32 | 3 | 10 | 19 | 2 | 8 | 37 | 293 |
| 2007 | | | | | | | | | | | |
| March | 12 | 44 | 51 | 9 | 6 | 8 | 16 | 3 | 5 | 13 | 167 |
| June | 18 | 68 | 96 | 281 | 3 | 7 | 7 | 6 | 2 | 24 | 512 |
| September | 70 | 146 | 121 | 274 | 5 | 20 | 24 | 17 | 14 | 36 | 727 |
| December | 59 | 180 | 167 | 254 | 10 | 21 | 43 | 13 | 8 | 35 | 790 |
| 2008 | | | | | | | | | | | |
| March | 43 | 132 | 117 | 190 | 10 | 12 | 18 | 10 | 11 | 27 | 570 |
| June | 39 | 72 | 105 | 241 | 9 | 15 | 39 | 4 | 5 | 20 | 549 |
| September | 68 | 277 | 183 | 241 | 8 | 16 | 36 | 19 | 17 | 49 | 914 |
| December | 91 | 266 | 262 | 291 | 10 | 19 | 26 | 21 | 11 | 31 | 1028 |
| 2009 | | | | | | | | | | | |
| March | 59 | 257 | 234 | 233 | 5 | 14 | 15 | 13 | 3 | 18 | 851 |
| June | 36 | 198 | 138 | 149 | 7 | 10 | 12 | 16 | 7 | 21 | 594 |
| % Change | | | | | | | | | | | |
| 2008-09 | -8% | 175% | 31% | -38% | -22% | -33% | -69% | 300% | 40% | 5% | 8% |
| June | | | | | | | | | | | |

SOURCE: Community Research Center rental surveys, 2006-2009, including most major apartment complexes and *Fairbanks Daily News-Miner* advertisements during the week surrounding the 19th of March, June, September and December.

NOTE: Birchwood Apartments (400 units; 3-5 bdrm.) which were once on-base housing was privatized and started public advertising May 2007. Birchwood Apts. became a part of this survey in June 2007. Alpine Lodge (16 Units: efficiencies) entered the market as seasonal rental housing beginning 4th Quarter 2007. Lazelle Estates (37 Units: 3-4 bedrooms) appeared on market survey September 2007. The Ft. Wainwright Army 172nd Stryker Brigade deployed to Iraq Fall 05-06 and again Fall 08-09.

RENTAL HOUSING UNITS AVAILABLE

Fairbanks North Star Borough
2005-2009



Housing

AVERAGE MONTHLY RENTS FOR AVAILABLE HOUSING UNITS

Fairbanks North Star Borough
2006-2009

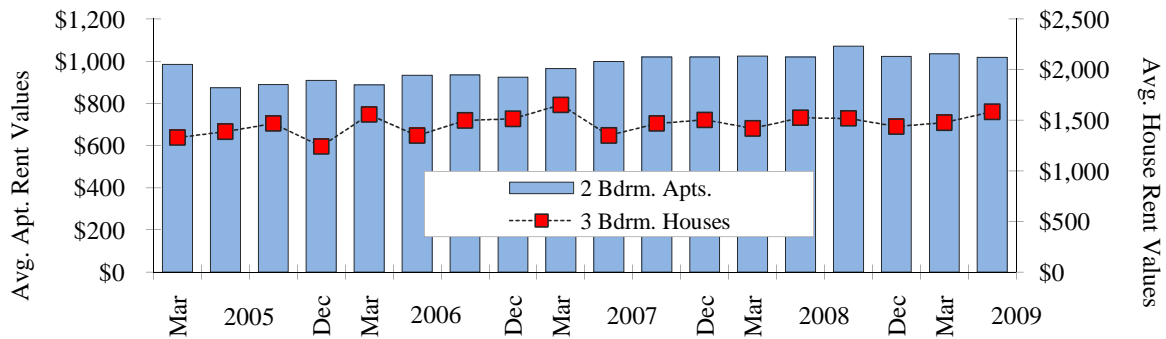
| | ----- Apartments ----- | | | | ----- Houses ----- | | | | Mobile Homes | Cabins |
|-----------------|------------------------|-----------|-----------|------------|--------------------|------------|-----------|------------|--------------|------------|
| | Eff. | 1-BR | 2-BR | 3+ BR | 1-BR | 2-BR | 3-BR | 4+ BR | | |
| 2006 | | | | | | | | | | |
| March | \$580 | \$757 | \$887 | \$1,163 | \$700 | \$1,121 | \$1,556 | \$1,325 | \$823 | \$510 |
| June | \$578 | \$735 | \$933 | \$1,313 | \$876 | \$1,149 | \$1,348 | \$1,571 | \$778 | \$574 |
| September | \$596 | \$713 | \$935 | \$1,220 | \$937 | \$1,152 | \$1,498 | \$1,747 | \$802 | \$521 |
| December | \$578 | \$753 | \$924 | \$1,309 | \$900 | \$1,102 | \$1,514 | \$1,750 | \$800 | \$525 |
| 2007 | | | | | | | | | | |
| March | \$564 | \$724 | \$964 | \$1,464 | \$883 | \$1,237 | \$1,652 | \$1,458 | \$894 | \$574 |
| June | \$608 | \$756 | \$998 | \$1,791 | \$1,050 | \$1,220 | \$1,350 | \$1,870 | \$975 | \$541 |
| September | \$772 | \$784 | \$1,019 | \$1,742 | \$710 | \$1,282 | \$1,468 | \$1,668 | \$865 | \$577 |
| December | \$834 | \$764 | \$1,020 | \$1,684 | \$945 | \$1,195 | \$1,503 | \$1,749 | \$855 | \$534 |
| 2008 | | | | | | | | | | |
| March | \$574 | \$759 | \$1,024 | \$1,662 | \$900 | \$1,137 | \$1,419 | \$1,650 | \$814 | \$492 |
| June | \$620 | \$791 | \$1,019 | \$1,807 | \$922 | \$1,195 | \$1,525 | \$1,837 | \$748 | \$491 |
| September | \$741 | \$849 | \$1,071 | \$1,763 | \$890 | \$1,248 | \$1,518 | \$2,314 | \$962 | \$518 |
| December | \$713 | \$836 | \$1,023 | \$1,736 | \$827 | \$1,038 | \$1,437 | \$2,447 | \$866 | \$563 |
| 2009 | | | | | | | | | | |
| March | \$678 | \$862 | \$1,035 | \$1,751 | \$1,008 | \$1,218 | \$1,476 | \$2,470 | \$898 | \$578 |
| June | \$674 | \$857 | \$1,018 | \$1,705 | \$1,254 | \$1,129 | \$1,584 | \$2,227 | \$760 | \$558 |
| % Change | | | | | | | | | | |
| 2008-09 | 9% | 8% | 0% | -6% | 36% | -6% | 4% | 21% | 2% | 14% |
| June | | | | | | | | | | |

SOURCE: Community Research Center rental surveys, 2006-2009, including most major apartment complexes and *Fairbanks Daily News-Miner* advertisements during the week surrounding the 19th of March, June, September and December.

NOTE: Birchwood Apartments (400 units; 3-5 bdrm.) which were once on-base housing was privatized and started public advertising May 2007. Birchwood Apts. became a part of this survey in June 2007. Alpine Lodge (16 Units: efficiencies) entered the market as seasonal rental housing beginning 4th Quarter 2007. Lazelle Estates (37 Units: 3-4 bedrooms) appeared on market survey September 2007. The Ft. Wainwright Army 172nd Stryker Brigade deployed to Iraq Fall 05-06 and again Fall 08-09.

AVERAGE MONTHLY RENTS FOR AVAILABLE HOUSING UNITS

Fairbanks North Star Borough
2005-2009



Housing

RESIDENTIAL HOUSING SALES*

Fairbanks North Star Borough
2007-2009**

| Quarter | 1 Bedroom | | 2 Bedroom | | 3 Bedroom | | 4 Bedroom | | 5+ Bedroom | | Total # Sold | Avg.Price |
|--|-------------|------------------|-------------|------------------|-------------|------------------|-------------|------------------|-------------|------------------|-----------------|------------------|
| | # | Price | # | Price | # | Price | # | Price | # | Price | | |
| 2007 | | | | | | | | | | | | |
| 1st Qtr. | 7 | \$105,142 | 28 | \$164,741 | 124 | \$223,673 | 36 | \$274,169 | 11 | \$263,900 | 206 | \$222,608 |
| 2nd Qtr. | 22 | \$100,115 | 42 | \$164,662 | 149 | \$239,958 | 47 | \$271,061 | 12 | \$277,325 | 272 | \$224,044 |
| 3rd Qtr. | 17 | \$124,194 | 56 | \$178,698 | 143 | \$226,861 | 61 | \$279,901 | 12 | \$280,316 | 289 | \$224,904 |
| 4th Qtr. | 12 | \$97,366 | 50 | \$170,652 | 125 | \$220,895 | 50 | \$259,437 | 6 | \$370,958 | 243 | \$216,092 |
| 2007 Total | 58 | \$107,211 | 176 | \$170,842 | 541 | \$228,359 | 194 | \$271,421 | 41 | \$288,301 | 1010 | \$222,084 |
| 2008 | | | | | | | | | | | | |
| 1st Qtr. | 7 | \$127,814 | 21 | \$144,432 | 92 | \$219,994 | 30 | \$270,630 | 4 | \$337,125 | 154 | \$218,407 |
| 2nd Qtr. | 19 | \$108,347 | 38 | \$173,839 | 142 | \$222,050 | 56 | \$279,496 | 5 | \$306,520 | 260 | \$220,692 |
| 3rd Qtr. | 22 | \$110,465 | 43 | \$152,979 | 162 | \$224,815 | 45 | \$289,412 | 6 | \$264,466 | 278 | \$215,967 |
| 4th Qtr. | 11 | \$89,174 | 33 | \$145,051 | 97 | \$202,995 | 28 | \$263,432 | 4 | \$338,375 | 173 | \$197,617 |
| 2008 Total | 59 | \$107,872 | 135 | \$155,583 | 493 | \$218,826 | 159 | \$277,801 | 19 | \$306,389 | 865 | \$214,151 |
| % Chg. ANNUAL 2007-08 | 2% | 1% | -23% | -9% | -9% | -4% | -18% | 2% | -54% | 6% | -14% | -4% |
| 2009 | | | | | | | | | | | | |
| 1st Qtr. | 7 | \$152,834 | 14 | \$158,295 | 52 | \$224,299 | 21 | \$266,933 | 7 | \$329,360 | 101 | \$226,343 |
| 2nd Qtr. | 11 | \$97,309 | 36 | \$159,202 | 112 | \$221,595 | 47 | \$264,209 | 8 | \$260,517 | 214 | \$215,525 |
| 2009 Total | 18 | \$118,902 | 50 | \$158,948 | 164 | \$222,452 | 68 | \$265,050 | 15 | \$292,644 | 315 | \$218,993 |
| % Chg. 2nd QTR. 2008-09 | -42% | -10% | -5% | -8% | -21% | 0% | -16% | -5% | 60% | -15% | -18% | -2% |

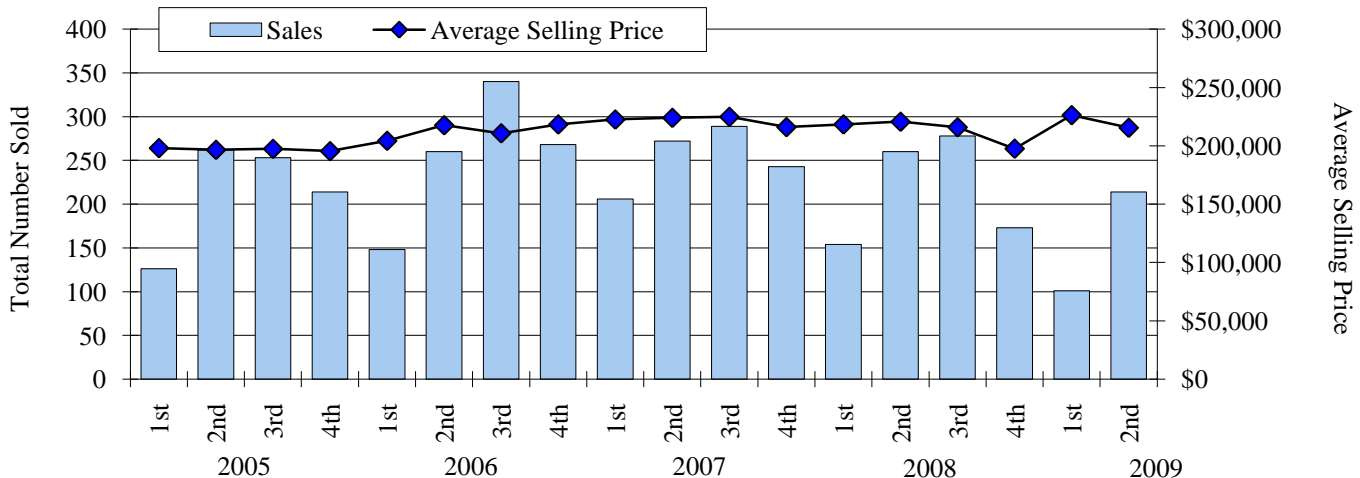
SOURCE: Greater Fairbanks Board of Realtors and Alaska/Multiple Listing Service, Inc., personal and computer printout communications 2007-2009. Data maintained by the Board or its MLS may not reflect all real estate activity in the market, and neither the Board nor its MLS guarantees or is in any way responsible for accuracy of the data.

* Does not include houses without bedrooms or sales of housing with zero lot lines.

** The Year-End Total number of sales includes the calculated average price of sales.

RESIDENTIAL HOUSING SALES

Fairbanks North Star Borough
2005-2009, Quarterly Data



Housing

ANNUAL AVERAGE RESIDENTIAL HOUSING SALES*

Fairbanks North Star Borough
2000-2008

| Year | 1 Bedroom | | 2 Bedroom | | 3 Bedroom | | 4 Bedroom | | 5+ Bedroom | | Total # Sold | Avg. Selling Price | % Chg fr prev yr | |
|-------------------------------|-----------|-----------------|------------|------------------|------------|------------------|------------|------------------|------------|------------------|--------------|--------------------|------------------|------------|
| | # | Price | # | Price | # | Price | # | Price | # | Price | | | Total # Sold | Avg. Price |
| 2000 | 59 | \$53,824 | 180 | \$92,473 | 396 | \$140,714 | 140 | \$173,130 | 41 | \$187,028 | 816 | \$131,679 | 11.3% | 2.7% |
| 2001 | 61 | \$63,591 | 233 | \$94,299 | 432 | \$150,035 | 162 | \$176,423 | 47 | \$188,765 | 935 | \$137,025 | 14.6% | 4.1% |
| 2002 | 43 | \$68,595 | 175 | \$100,499 | 295 | \$158,241 | 130 | \$213,208 | 50 | \$201,706 | 693 | \$151,545 | -25.9% | 10.6% |
| 2003 | 59 | \$74,127 | 204 | \$107,667 | 410 | \$170,379 | 173 | \$204,159 | 47 | \$237,134 | 893 | \$159,751 | 28.9% | 5.4% |
| 2004 | 65 | \$93,531 | 164 | \$120,336 | 441 | \$178,733 | 147 | \$214,663 | 39 | \$240,959 | 856 | \$170,080 | -4.1% | 6.5% |
| 2005 | 55 | \$95,452 | 160 | \$135,749 | 439 | \$207,847 | 163 | \$244,873 | 38 | \$266,373 | 855 | \$196,785 | -0.1% | 15.7% |
| 2006 | 64 | \$107,793 | 158 | \$148,952 | 554 | \$220,860 | 194 | \$262,791 | 46 | \$288,256 | 1016 | \$213,613 | 18.8% | 8.6% |
| 2007 | 58 | \$107,211 | 176 | \$170,842 | 541 | \$228,359 | 194 | \$271,421 | 41 | \$288,301 | 1010 | \$222,084 | -0.6% | 4.0% |
| 2008 | 59 | \$107,872 | 135 | \$155,583 | 493 | \$218,826 | 159 | \$277,801 | 19 | \$306,389 | 865 | \$214,151 | -14.4% | -3.6% |
| Annual Average 2000-08 | 58 | \$85,777 | 176 | \$125,156 | 445 | \$185,999 | 162 | \$226,497 | 41 | \$244,990 | 882 | \$177,413 | | |

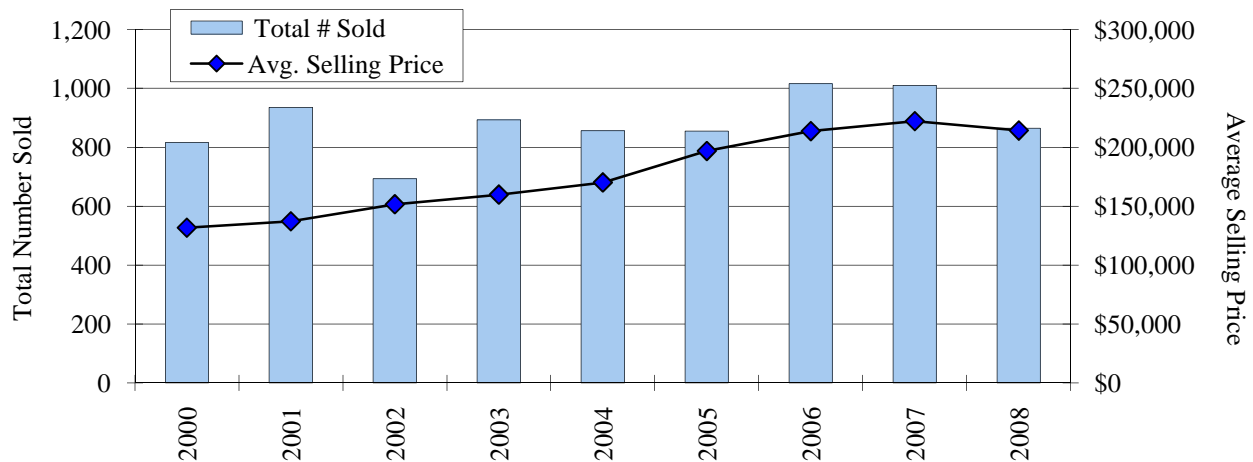
SOURCE: Greater Fairbanks Board of Realtors and Alaska/Multiple Listing Service, Inc., personal and computer printout communications 2000-2009. Data maintained by the Board or its MLS may not reflect all real estate activity in the market, and neither the Board nor its MLS guarantees or is in any way responsible for accuracy of the data.

* Does not include houses without bedrooms or housing with zero lot lines.

** The Year-End Total number of sales includes the calculated average price of sales.

ANNUAL RESIDENTIAL HOUSING SALES*

Fairbanks North Star Borough
2000-2008



Housing

DEEDS OF TRUST RECORDED

Fairbanks Recording District
2004-2009

| | Mortgage | | Consumer | | Construction | | Commercial | | Total | |
|----------------|--------------|------------------|-------------|-----------------|--------------|-----------------|-------------|------------------|--------------|------------------|
| | # | (\$1,000) | # | (\$1,000) | # | (\$1,000) | # | (\$1,000) | # | (\$1,000) |
| 2004 | | | | | | | | | | |
| 1st Qtr. | 582 | \$82,738 | 185 | \$7,900 | 26 | \$4,184 | 67 | \$34,180 | 860 | \$129,002 |
| 2nd Qtr. | 691 | \$100,984 | 243 | \$10,508 | 155 | \$30,774 | 85 | \$35,530 | 1,174 | \$177,796 |
| 3rd Qtr. | 686 | \$102,260 | 261 | \$9,979 | 126 | \$28,502 | 68 | \$18,160 | 1,141 | \$158,902 |
| 4th Qtr. | 662 | \$98,643 | 134 | \$1,452 | 53 | \$12,298 | 68 | \$25,904 | 917 | \$138,296 |
| Total | 2,621 | \$384,625 | 823 | \$29,839 | 360 | \$75,758 | 288 | \$113,774 | 4,092 | \$603,996 |
| 2005 | | | | | | | | | | |
| 1st Qtr. | 539 | \$85,133 | 155 | \$5,901 | 54 | \$9,390 | 66 | \$28,243 | 814 | \$128,667 |
| 2nd Qtr. | 668 | \$106,980 | 257 | \$11,065 | 134 | \$34,146 | 85 | \$42,945 | 1,144 | \$195,137 |
| 3rd Qtr. | 727 | \$116,935 | 216 | \$8,533 | 135 | \$27,936 | 90 | \$35,220 | 1,168 | \$188,623 |
| 4th Qtr. | 647 | \$108,260 | 159 | \$6,379 | 49 | \$10,691 | 71 | \$33,668 | 926 | \$158,999 |
| Total | 2,581 | \$417,308 | 787 | \$31,878 | 372 | \$82,163 | 312 | \$140,076 | 4,052 | \$671,426 |
| 2006 | | | | | | | | | | |
| 1st Qtr. | 486 | \$86,804 | 172 | \$7,338 | 37 | \$6,693 | 50 | \$16,943 | 745 | \$117,776 |
| 2nd Qtr. | 686 | \$122,943 | 233 | \$9,663 | 146 | \$46,518 | 64 | \$28,615 | 1,129 | \$207,739 |
| 3rd Qtr. | 776 | \$141,716 | 226 | \$8,981 | 126 | \$31,510 | 79 | \$57,272 | 1,207 | \$239,481 |
| 4th Qtr. | 683 | \$125,045 | 146 | \$6,495 | 58 | \$9,518 | 61 | \$41,435 | 948 | \$182,492 |
| Total | 2,631 | \$476,508 | 777 | \$32,477 | 367 | \$94,239 | 254 | \$144,265 | 4,029 | \$747,488 |
| 2007 | | | | | | | | | | |
| 1st Qtr. | 539 | \$103,415 | 125 | \$6,142 | 32 | \$7,458 | 74 | \$45,145 | 770 | \$162,160 |
| 2nd Qtr. | 684 | \$132,663 | 158 | \$7,450 | 164 | \$39,349 | 63 | \$79,742 | 1,069 | \$259,203 |
| 3rd Qtr. | 677 | \$128,643 | 135 | \$6,038 | 100 | \$20,754 | 62 | \$38,803 | 974 | \$194,240 |
| 4th Qtr. | 547 | \$108,114 | 115 | \$5,957 | 40 | \$8,431 | 43 | \$33,329 | 745 | \$155,831 |
| Total | 2,447 | \$472,835 | 533 | \$25,587 | 336 | \$75,992 | 242 | \$197,019 | 3,558 | \$771,434 |
| 2008 | | | | | | | | | | |
| 1st Qtr. | 498 | \$96,476 | 85 | \$4,379 | 16 | \$2,991 | 38 | \$12,925 | 637 | \$116,770 |
| 2nd Qtr. | 657 | \$127,576 | 144 | \$6,149 | 55 | \$10,361 | 72 | \$41,553 | 928 | \$185,640 |
| 3rd Qtr. | 504 | \$99,095 | 113 | \$5,478 | 45 | \$11,260 | 63 | \$23,281 | 725 | \$139,114 |
| 4th Qtr. | 408 | \$78,045 | 99 | \$3,918 | 13 | \$2,832 | 39 | \$34,225 | 559 | \$119,020 |
| Total | 2,067 | \$401,192 | 441 | \$19,924 | 129 | \$27,444 | 212 | \$111,984 | 2,849 | \$560,544 |
| 2009 | | | | | | | | | | |
| 1st Qtr. | 732 | \$144,547 | 41 | \$1,732 | 10 | \$1,491 | 33 | \$21,968 | 816 | \$169,738 |
| 2nd Qtr. | 1,008 | \$189,664 | 101 | \$4,930 | 43 | \$9,050 | 42 | \$14,508 | 1,194 | \$218,152 |
| Total | 1,740 | \$334,211 | 142 | \$6,662 | 53 | \$10,541 | 75 | \$36,476 | 2,010 | \$387,890 |
| % Chg | | | | | | | | | | |
| 2nd Qtr | 53% | 49% | -30% | -20% | -22% | -13% | -42% | -65% | 29% | 18% |
| 2008-09 | | | | | | | | | | |

SOURCE: Fairbanks Title Agency, "Records of the Fairbanks Recording District, Fourth Judicial District, Mortgage Report," 2004-2009.

NOTE: Numbers reflect insured deeds of trust. This information reflects loans made by lenders only. Numbers are preliminary and may be subject to revision. Please note that numbers are rounded to nearest 100.

Housing

NEW STRUCTURES ANNUAL REPORT**^

Fairbanks North Star Borough
1998-2008

| Year Built | City of Fairbanks | | | | City of North Pole | | | |
|--------------|-------------------|------------|--------------|-----------------|--------------------|------------|--------------|------------------|
| | SFR | Cabin | Multi Family | Fairbanks Total | SFR | Cabin | Multi Family | North Pole Total |
| 1998 | 43 | | 7 | 50 | 18 | | | 18 |
| 1999 | 21 | | 1 | 22 | 4 | | | 4 |
| 2000 | 25 | | | 25 | 3 | | | 3 |
| 2001 | 23 | | 1 | 24 | 1 | | 2 | 3 |
| 2002 | 42 | 1 | 2 | 45 | 4 | | 1 | 5 |
| 2003 | 65 | | 3 | 68 | 10 | 1 | | 11 |
| 2004 | 60 | | 2 | 62 | 37 | | 5 | 42 |
| 2005 | 64 | | 6 | 70 | 42 | | | 42 |
| 2006 | 70 | | 6 | 76 | 37 | | 1 | 38 |
| 2007 | 61 | | 1 | 62 | 28 | | 5 | 33 |
| 2008 | 13 | | 4 | 17 | 11 | | | 11 |
| Total | 487 | 1 | 33 | 521 | 195 | 1 | 14 | 210 |
| AVG | 44.3 | 1.0 | 3.3 | 47.4 | 17.7 | 1.0 | 2.8 | 19.1 |

| Year Built | Balance of Borough | | | | NEW CONSTRUCTION (All) | | | |
|--------------|--------------------|-------------|--------------|--------------------|------------------------|-------------|--------------|------------------------|
| | SFR | Cabin | Multi Family | FNSB Balance Total | SFR | Cabin | Multi Family | New Construction Total |
| 1998 | 453 | 64 | 16 | 533 | 514 | 64 | 23 | 601 |
| 1999 | 409 | 51 | 7 | 467 | 434 | 51 | 8 | 493 |
| 2000 | 321 | 115 | 11 | 447 | 349 | 115 | 11 | 475 |
| 2001 | 418 | 64 | 12 | 494 | 442 | 64 | 15 | 521 |
| 2002 | 478 | 69 | 15 | 562 | 524 | 70 | 18 | 612 |
| 2003 | 554 | 86 | 25 | 665 | 629 | 87 | 28 | 744 |
| 2004 | 662 | 76 | 45 | 783 | 759 | 76 | 52 | 887 |
| 2005 | 644 | 75 | 39 | 758 | 750 | 75 | 45 | 870 |
| 2006 | 620 | 66 | 34 | 720 | 727 | 66 | 41 | 834 |
| 2007 | 574 | 53 | 28 | 655 | 663 | 53 | 34 | 750 |
| 2008 | 295 | 26 | 5 | 326 | 319 | 26 | 9 | 354 |
| Total | 5,428 | 745 | 237 | 6,410 | 6,110 | 747 | 284 | 7,141 |
| AVG | 493.5 | 67.7 | 21.5 | 582.7 | 555.5 | 67.9 | 25.8 | 649.2 |

SOURCE: Fairbanks North Star Borough Assessing Department, personal communications, beginning November 2006, personal communication 2006-2009.

NOTE: Assessing figures are collected and updated daily but stabilize one quarter after calendar year close and prior to May certification date. The term Multi-family is indicative of structures having more than one residential unit, such as a duplex, triplex, 4-plex, etc. Structures with Mother-in-law apartments are not usually regarded as multi-family. Single Family Residential (SFR) abbreviated above. SFR includes condominiums, and townhouses. In some instances, cabins and mobile homes are viewed as SFR (however, cabins are not necessarily year-round residential units, and mobile homes are not always located on a lot with a foundation). The mobile home classification is typically considered transient stock (because they can easily be relocated).

* Current data supersedes previous figures reported.

COST OF LIVING

ACCRA COST OF LIVING INDEX*

For Selected Cities
Second Quarter 2009

| City | Composite Index 100% | Grocery | | Utilities | Trans- portation | Health Care | Msc. Goods & Services |
|-------------------------|-------------------------|-----------------|-------------------|--------------|---------------------|----------------|-----------------------------|
| | | Items 12.49% | Housing 29.18% | | | | |
| West: | | | | | | | |
| Fairbanks, AK | 133.6 | 122.0 | 153.8 | 150.9 | 124.3 | 144.0 | 117.0 |
| Anchorage, AK | 124.8 | 133.1 | 138.9 | 102.9 | 114.9 | 125.3 | 119.1 |
| Kodiak, AK | 124.1 | 144.4 | 122.8 | 125.0 | 138.4 | 129.1 | 112.1 |
| Phoenix, AZ | 99.2 | 107.4 | 96.9 | 88.3 | 98.3 | 98.1 | 101.8 |
| Oakland, CA | 137.9 | 116.0 | 194.2 | 92.3 | 116.1 | 117.7 | 120.1 |
| Denver, CO | 104.1 | 103.6 | 108.6 | 93.0 | 98.5 | 104.6 | 105.5 |
| Boise, ID | 95.8 | 95.7 | 84.9 | 102.8 | 103.6 | 104.5 | 99.7 |
| Kalispell, MT | 102.2 | 119.5 | 100.8 | 85.7 | 104.3 | 101.7 | 101.1 |
| Farmington, NM | 98.5 | 97.5 | 103.3 | 94.0 | 101.3 | 100.6 | 94.8 |
| Seattle, WA | 121.9 | 108.4 | 150.1 | 83.3 | 118.5 | 120.2 | 115.3 |
| Laramie, WY | 100.4 | 109.2 | 102.8 | 91.7 | 93.3 | 94.5 | 100.8 |
| South: | | | | | | | |
| Miami, FL | 110.3 | 108.6 | 120.6 | 92.9 | 113.3 | 107.1 | 106.5 |
| Atlanta, GA | 93.2 | 103.3 | 85.6 | 83.0 | 99.5 | 103.2 | 95.7 |
| Lafayette, LA | 97.6 | 96.0 | 104.9 | 77.4 | 106.1 | 88.7 | 96.2 |
| St. Joseph, MO | 96.2 | 98.6 | 87.2 | 98.8 | 91.8 | 104.9 | 102.9 |
| Tulsa, OK | 87.5 | 93.4 | 65.4 | 90.7 | 91.4 | 99.6 | 101.0 |
| Memphis, TN | 86.6 | 88.7 | 76.0 | 86.2 | 95.5 | 101.1 | 90.5 |
| Dallas, TX | 92.0 | 91.2 | 69.5 | 111.1 | 103.6 | 104.3 | 100.9 |
| North Central: | | | | | | | |
| Indianapolis, IN | 89.1 | 91.7 | 82.4 | 86.3 | 103.0 | 98.2 | 89.1 |
| Grand Rapids, MI | 94.2 | 94.2 | 89.1 | 123.7 | 94.7 | 89.3 | 90.2 |
| Wausau, WI | 97.1 | 95.8 | 88.7 | 135.4 | 99.4 | 102.1 | 92.2 |
| Northeast: | | | | | | | |
| New York, NY | 217.5 | 142.8 | 402.5 | 146.7 | 132.4 | 130.4 | 143.3 |
| Philadelphia, PA | 124.7 | 125.4 | 142.4 | 133.4 | 105.7 | 108.8 | 114.5 |
| Boston, MA | 132.5 | 115.7 | 147.0 | 163.4 | 102.2 | 124.0 | 128.0 |
| Raleigh, NC | 101.5 | 109.5 | 90.2 | 100.7 | 98.4 | 104.2 | 109.4 |
| Richmond, VA | 107.2 | 103.1 | 107.5 | 120.7 | 96.9 | 112.8 | 107.1 |
| Avg. of 320 Urban Areas | 100.0 | 100.0 | 100.0 | 100.0 | 100.0 | 100.0 | 100.0 |

SOURCE: ACCRA (American Chamber of Commerce Researchers Association), "ACCRA Cost of Living Index," Second Quarter 2009

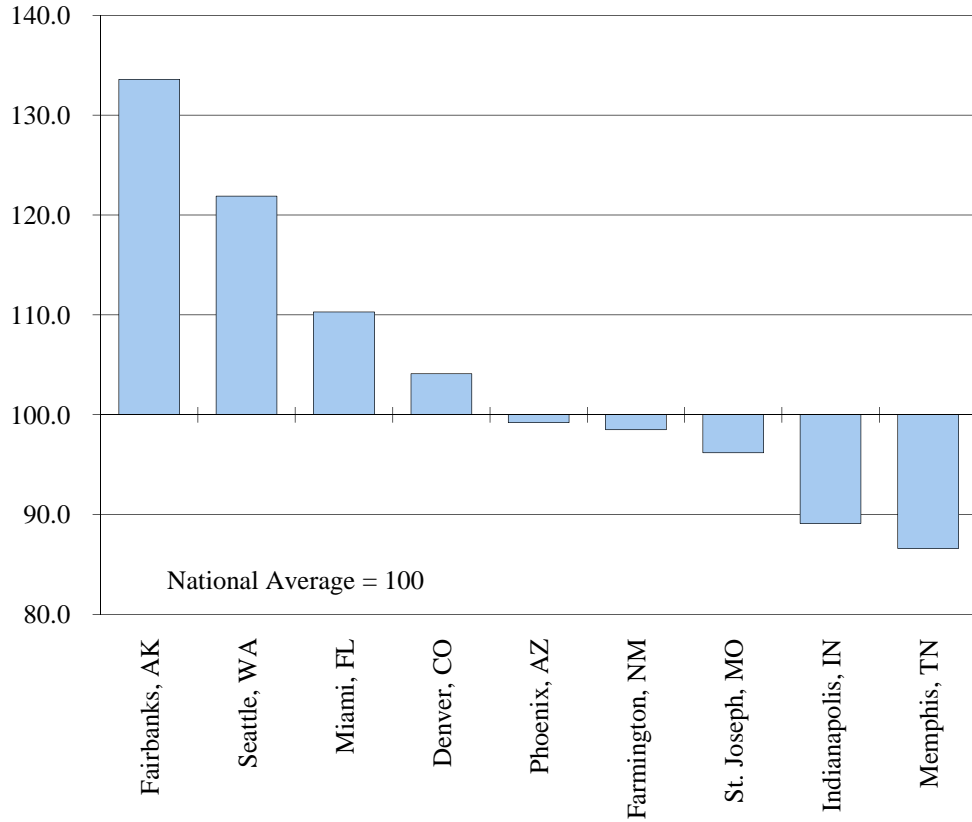
NOTE: The ACCRA Cost of Living Index does not measure inflation (price change over time). Because each quarterly report is a separate comparison of prices at a single point in time, and because both the number and the mix of participants changes from one quarter to the next, Index data from different quarters cannot be compared. For inflation data you will need to use the CPI (Consumer Price Index).

* Item percentages change so please watch for current percentages.

Cost of Living

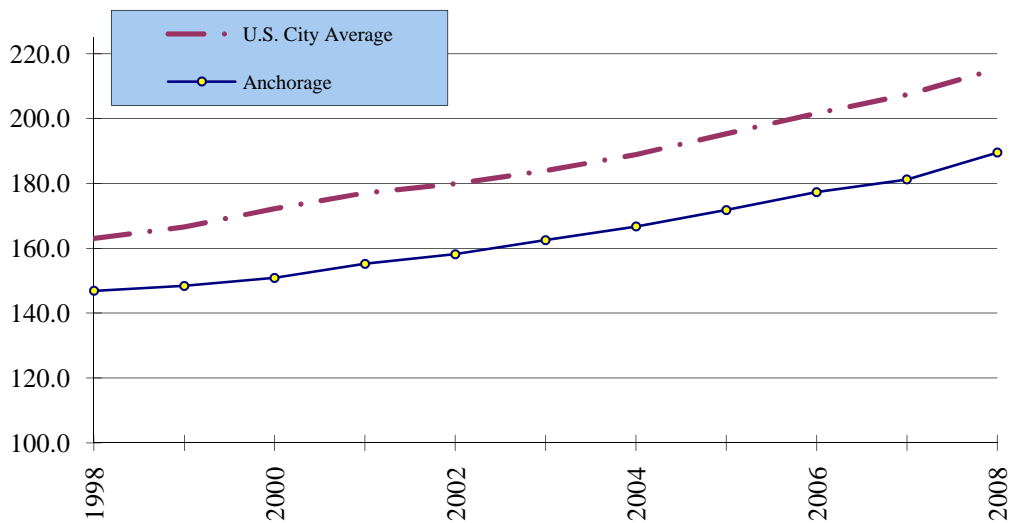
ACCRA COST OF LIVING INDEX

For Selected Cities
Second Quarter 2009



CONSUMER PRICE INDEX-U FOR ALL ITEMS

Anchorage & U.S. City Annual Average
1998-2008



Cost of Living

CONSUMER PRICE INDEX-U*^

Anchorage, Alaska
2004-2009

| | 2004 | 2005 | 2006 | 2007 | 2008 | 2009 | % Change 2008-09 |
|--|--------------|--------------|--------------|--------------|----------------|---------|---------------------|
| Jan. - June Average | 165.6 | 169.6 | 176.7 | 179.4 | 187.659 | 190.032 | 1.3% |
| July - Dec. Average | 167.8 | 174.1 | 177.9 | 183.1 | 191.335 | | |
| Annual Average | 166.7 | 171.8 | 177.3 | 181.2 | 189.497 | | |
| % Change from Previous Year | 2.6% | 3.1% | 3.2% | 2.2% | 4.6% | | |

SOURCE: U.S. Department of Labor, Bureau of Labor Statistics, *Consumer Price Indexes Pacific Cities and U.S. City Average*, not seasonally adjusted, 2004-2009.

NOTE: 1982-1984 = 100

* For All Urban Consumers.

CONSUMER PRICE INDEX-U* FOR ALL ITEMS

U.S. City Average
2004-2009

| | 2004 | 2005 | 2006 | 2007 | 2008 | 2009 | % Change 2008-09 |
|--|--------------|--------------|--------------|--------------|----------------|---------|---------------------|
| January | 185.2 | 190.7 | 198.3 | 202.4 | 211.080 | 211.143 | 0.0% |
| February | 186.2 | 191.8 | 198.7 | 203.5 | 211.693 | 212.193 | 0.2% |
| March | 187.4 | 193.3 | 199.8 | 205.4 | 213.528 | 212.709 | -0.4% |
| April | 188.0 | 194.6 | 201.5 | 206.7 | 214.823 | 213.240 | -0.7% |
| May | 189.1 | 194.4 | 202.5 | 207.9 | 216.632 | 213.856 | -1.3% |
| June | 189.7 | 194.5 | 202.9 | 208.4 | 218.815 | 215.693 | -1.4% |
| July | 189.4 | 195.4 | 203.5 | 208.3 | 219.964 | | |
| August | 189.5 | 196.4 | 203.9 | 207.9 | 219.086 | | |
| September | 189.9 | 198.8 | 202.9 | 208.5 | 218.783 | | |
| October | 190.9 | 199.2 | 201.8 | 208.9 | 216.573 | | |
| November | 191.0 | 197.6 | 201.5 | 210.2 | 212.425 | | |
| December | 190.3 | 196.8 | 201.8 | 210.0 | 210.228 | | |
| Average | 188.9 | 195.3 | 201.6 | 207.3 | 215.303 | | |
| % Change from Previous Year | 2.7% | 3.4% | 3.2% | 2.8% | 3.8% | | |

SOURCE: U.S. Department of Labor, Bureau of Labor Statistics, *Consumer Price Indexes Pacific Cities and U.S. City Average*, not seasonally adjusted, 2004-2009.

NOTE: 1982-1984=100; All items.

* For All Urban Consumers.

Cost of Living

CONSUMER PRICE INDEX FOR ALL URBAN CONSUMERS

Anchorage
2005-2008

| Index Item | Relative Importance (Percent of All Items) Dec. 2008 | -----Indexes----- | | | | % Change 2005-08 | % Change 2007-08 |
|---|--|-------------------|--------------|----------------|----------------|---------------------|---------------------|
| | | 2005 | 2006 | 2007 | 2008 | | |
| Food & Beverage | 15.078 | 173.1 | 176.2 | 184.224 | 192.283 | 11.1% | 4.4% |
| Food | 13.841 | 173.9 | 177.0 | 185.567 | 194.347 | 11.8% | 4.7% |
| Food at Home | 7.847 | 176.1 | 177.6 | 187.131 | 198.195 | 12.5% | 5.9% |
| Food away from home | 5.995 | 171.4 | 176.4 | 182.800 | 187.486 | 9.4% | 2.6% |
| Alcoholic beverages | 1.237 | 161.7 | 164.3 | 166.068 | 166.268 | 2.8% | 0.1% |
| Housing | 40.942 | 153.1 | 159.2 | 163.467 | 167.564 | 9.4% | 2.5% |
| Shelter | 31.859 | 157.0 | 162.3 | 164.540 | 169.058 | 7.7% | 2.7% |
| Rent of primary residence | 5.691 | 146.6 | 151.4 | 156.066 | 161.824 | 10.4% | 3.7% |
| Owners' equivalent rent of primary residence [^] | 23.857 | 156.0 | 160.6 | 164.008 | 168.695 | 8.1% | 2.9% |
| Fuels and utilities | 4.296 | 189.4 | 211.9 | 238.720 | 241.659 | 27.6% | 1.2% |
| Household Energy | 3.554 | 193.6 | 220.2 | 250.802 | 253.094 | 30.7% | 0.9% |
| Household furnishings and operations | 4.787 | 109.9 | 110.8 | 112.098 | 115.741 | 5.3% | 3.2% |
| Apparel | 3.903 | 121.3 | 126.9 | 123.356 | 130.852 | 7.9% | 6.1% |
| Transportation | 18.307 | 171.7 | 178.6 | 180.744 | 199.673 | 16.3% | 10.5% |
| Private transportation | 15.854 | 170.6 | 175.8 | 177.545 | 195.539 | 14.6% | 10.1% |
| Motor fuel | 4.297 | 186.4 | 212.5 | 226.117 | 296.838 | 59.2% | 31.3% |
| Medical Care | 6.028 | 344.2 | 356.1 | 366.953 | 380.591 | 10.6% | 3.7% |
| Education and communication[#] | 5.494 | 104.2 | 106.6 | 107.321 | 109.298 | 4.9% | 1.8% |
| Recreation[*] | 6.586 | 117.5 | 116.9 | 116.744 | 118.981 | 1.3% | 1.9% |
| Other Goods & Services | 3.662 | 250.8 | 254.0 | 264.234 | 284.307 | 13.4% | 7.6% |
| All Items | 100.000 | 171.8 | 177.3 | 181.237 | 189.497 | 10.3% | 4.6% |
| All Items Less Shelter | 68.141 | 171.7 | 177.5 | 187.644 | 198.032 | 15.3% | 5.5% |

SOURCE: U.S. Department of Labor, Bureau of Labor Statistics, *CPI Detailed Report*, Bureau of Labor statistics website: www.bls.gov, 2009.

No calculation reflected.

[^] Indexes on a November 1982=100 base.

^{*} Indexes on a December 1997=100 base.

Cost of Living

CONSUMER PRICE INDEX FOR ALL URBAN CONSUMERS

United States City Average
2005-2008

| Index Item | Relative Importance (Percent of All Items) Dec. 2008 | -----Indexes----- | | | | % Change 2005-08 | % Change 2007-08 |
|---|--|-------------------|--------------|----------------|----------------|---------------------|---------------------|
| | | 2005 | 2006 | 2007 | 2008 | | |
| Food & Beverage | 15.757 | 191.2 | 195.7 | 203.300 | 214.225 | 12.0% | 5.4% |
| Food | 14.629 | 190.7 | 195.2 | 202.916 | 214.106 | 12.3% | 5.5% |
| Food at Home | 8.156 | 189.8 | 193.1 | 201.245 | 214.125 | 12.8% | 6.4% |
| Food away from home | 6.474 | 193.4 | 199.4 | 206.659 | 215.769 | 11.6% | 4.4% |
| Alcoholic beverages | 1.127 | 195.9 | 200.7 | 207.026 | 214.484 | 9.5% | 3.6% |
| Housing | 43.421 | 195.7 | 203.2 | 209.586 | 216.264 | 10.5% | 3.2% |
| Shelter | 33.200 | 224.4 | 232.1 | 240.611 | 246.666 | 9.9% | 2.5% |
| Rent of primary residence | 5.957 | 217.3 | 225.1 | 234.679 | 243.271 | 12.0% | 3.7% |
| Owners' equivalent rent of primary residence^ | 24.433 | 230.2 | 238.2 | 246.235 | 252.426 | 9.7% | 2.5% |
| Fuels and utilities | 5.431 | 179.0 | 194.7 | 200.632 | 220.018 | 22.9% | 9.7% |
| Household Energy | 4.460 | 161.6 | 177.1 | 181.744 | 200.808 | 24.3% | 10.5% |
| Household furnishings and operations | 4.790 | 126.1 | 127.0 | 126.875 | 127.800 | 1.3% | 0.7% |
| Apparel | 3.691 | 119.5 | 119.5 | 118.998 | 118.907 | -0.5% | -0.1% |
| Transportation | 15.314 | 173.9 | 180.9 | 184.682 | 195.549 | 12.4% | 5.9% |
| Private transportation | 14.189 | 170.2 | 177.0 | 180.778 | 191.039 | 12.2% | 5.7% |
| Motor fuel | 3.164 | 195.7 | 221.0 | 239.070 | 279.652 | 42.9% | 17.0% |
| Public Transportation | 1.125 | 217.3 | 226.6 | 230.002 | 250.549 | 15.3% | 8.9% |
| Medical Care | 6.390 | 323.2 | 336.2 | 351.054 | 364.065 | 12.6% | 3.7% |
| Education and communication* | 6.301 | 113.7 | 116.8 | 119.577 | 123.631 | 8.7% | 3.4% |
| Recreation* | 5.741 | 109.4 | 110.9 | 111.443 | 113.254 | 3.5% | 1.6% |
| Other Goods & Services | 3.386 | 313.4 | 321.7 | 333.328 | 345.381 | 10.2% | 3.6% |
| All Items | 100.000 | 195.3 | 201.6 | 207.342 | 215.303 | 10.2% | 3.8% |
| All Items Less Shelter | 66.800 | 186.1 | 191.9 | 196.639 | 205.453 | 10.4% | 4.5% |

SOURCE: U.S. Department of Labor, Bureau of Labor Statistics, *CPI Detailed Report*, Bureau of Labor statistics website: www.bls.gov, 2009.

^ Indexes on a November 1982=100 base.

* Indexes on a December 1997=100 base.

Cost of Living

COST OF FOOD AT HOME FOR A WEEK

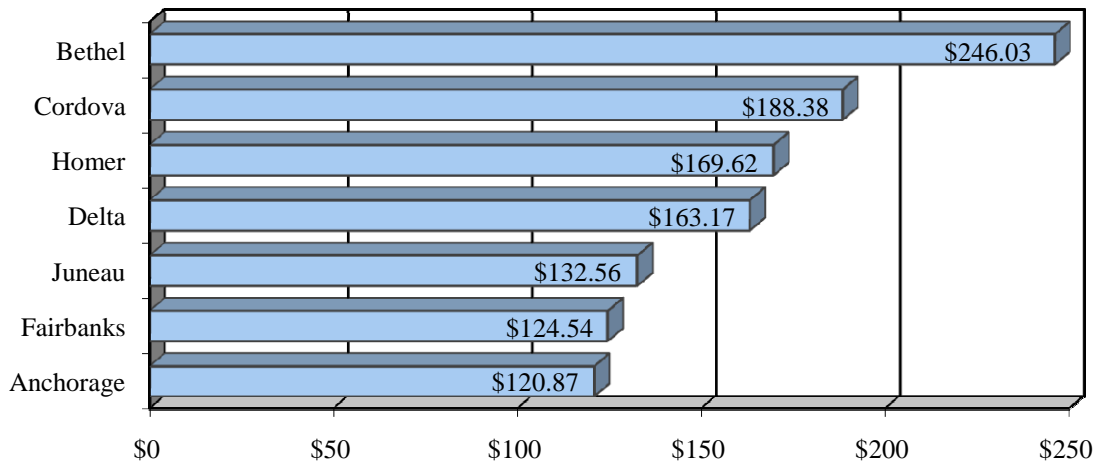
Selected Alaskan Communities
June 2009

| | Anchorage | Bethel | Cordova | Delta | Fairbanks | Homer | Juneau |
|----------------------|-----------|--------|---------|--------|---------------|--------|--------|
| Family of 2 | | | | | | | |
| 19-50 years | 72.47 | 147.51 | 112.94 | 97.83 | 74.67 | 101.70 | 79.48 |
| 51-70 years | 68.88 | 140.20 | 107.35 | 92.98 | 70.97 | 96.66 | 75.54 |
| Family of 4 with: | | | | | | | |
| Children, 2-5 years | 105.51 | 214.77 | 164.45 | 142.44 | 108.72 | 148.07 | 115.72 |
| Children, 6-11 years | 120.87 | 246.03 | 188.38 | 163.17 | 124.54 | 169.62 | 132.56 |
| Individuals | | | | | | | |
| Children: | | | | | | | |
| 1 years | 18.05 | 36.74 | 28.13 | 24.37 | 18.60 | 25.33 | 19.80 |
| 2-3 years | 18.86 | 38.39 | 29.39 | 25.46 | 19.43 | 26.46 | 20.68 |
| 4-5 years | 20.12 | 40.94 | 31.35 | 27.15 | 20.73 | 28.23 | 22.06 |
| 6-8 years | 25.68 | 52.28 | 40.03 | 34.67 | 26.46 | 36.04 | 28.17 |
| 9-11 years | 29.36 | 59.77 | 45.77 | 39.64 | 30.26 | 41.21 | 32.20 |
| Males: | | | | | | | |
| 12-13 years | 31.43 | 63.98 | 48.98 | 42.43 | 32.38 | 44.11 | 34.47 |
| 14-18 years | 32.60 | 66.35 | 50.80 | 44.00 | 33.59 | 45.74 | 35.75 |
| 19-50 years | 34.93 | 71.10 | 54.44 | 47.16 | 35.99 | 49.02 | 38.31 |
| 51-70 years | 31.97 | 65.07 | 49.82 | 43.16 | 32.94 | 44.86 | 35.06 |
| 71+ years | 32.15 | 65.44 | 50.10 | 43.40 | 33.12 | 45.11 | 35.26 |
| Females: | | | | | | | |
| 12-13 years | 31.61 | 64.34 | 49.26 | 42.67 | 32.57 | 44.36 | 34.67 |
| 14-18 years | 31.16 | 63.43 | 48.56 | 42.07 | 32.11 | 43.73 | 34.17 |
| 19-50 years | 30.98 | 63.06 | 48.28 | 41.82 | 31.92 | 43.48 | 33.98 |
| 51-70 years | 30.71 | 62.51 | 47.86 | 41.46 | 31.64 | 43.10 | 33.68 |
| 71+ years | 29.99 | 61.05 | 46.75 | 40.49 | 30.90 | 42.09 | 32.89 |

SOURCE: Alaska Cooperative Extension Service, UAF, "Cost of Food at Home for a Week," June 2009.

COST OF FOOD AT HOME FOR A WEEK FAMILY OF 4 WITH CHILDREN AGE 6-11 YEARS

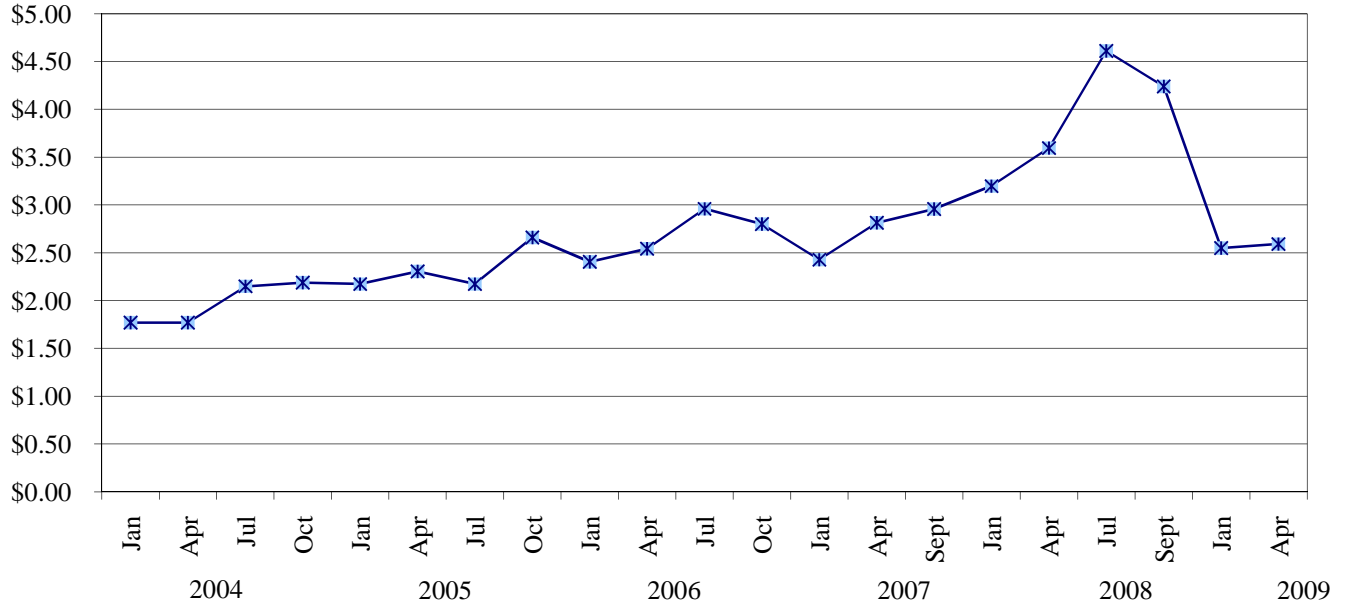
Selected Alaskan Communities
June 2009



Cost of Living

AVERAGE SELF-SERVICE UNLEADED GASOLINE PRICES

Fairbanks North Star Borough
2004-2009



AVERAGE SELF-SERVICE UNLEADED GASOLINE PRICES*

Fairbanks North Star Borough
2005-2009

| | -----2005----- | | -----2006----- | | -----2007----- | | -----2008*----- | | -----2009*----- | |
|-----------|---------------------|--------------|---------------------|--------------|---------------------|--------------|---------------------|--------------|---------------------|--------------|
| | # Stations Surveyed | Price/Gallon | # Stations Surveyed | Price/Gallon | # Stations Surveyed | Price/Gallon | # Stations Surveyed | Price/Gallon | # Stations Surveyed | Price/Gallon |
| January | (8) | \$2.17 | (7) | \$2.41 | (5) | \$2.43 | (5) | \$3.20 | (5) | \$2.55 |
| April | (8) | \$2.30 | (7) | \$2.54 | (5) | \$2.81 | (5) | \$3.60 | (5) | \$2.59 |
| July | (7) | \$2.17 | (5) | \$2.96 | - | - | (5) | \$4.61 | - | - |
| September | - | - | - | - | (5) | \$2.96 | (5) | \$4.24 | - | - |
| October | (7) | \$2.66 | (5) | \$2.80 | - | - | - | - | - | - |

SOURCE: Community Research Center gasoline price surveys, 2005-2009.

NOTE: Figures reflect prices shown on the gasoline pumps. Only national gasoline retail chain outlets are surveyed. Sourdough Fuel purchased all Texaco stations and replaced their brand name signs, July 2006.

* Beginning September 2007 the survey month changed.

POPULATION & SOCIAL CONDITIONS

POPULATION COUNTS & ESTIMATES**

Fairbanks, North Pole and the Fairbanks North Star Borough
1999-2008, Selected Years

| | | U.S. Census Bureau (1) | Ak. Department of Labor ¹ (2) | Ak. Dept of Commerce (3) |
|--|------|---------------------------|---|-----------------------------|
| F A I R B A N K S | 1999 | -- | 31,697 | 31,697 |
| | 2000 | 30,182 | 30,224 | 30,224 |
| | 2001 | 31,001 | 29,516 | 29,558 |
| | 2002 | 31,575 | 29,773 | 29,670 |
| | 2003 | 31,775 | 28,924 | 29,486 |
| | 2004 | 33,249 | 30,101 | 30,083 |
| | 2005 | 33,950 | 31,104 | 31,071 |
| | 2006 | 33,917 | 30,179 | 30,552 |
| | 2007 | 34,540 | 31,627 | 30,552 |
| | 2008 | 35,132 | 30,367 | 30,367 |
| N O R T H P O L E | 1999 | -- | 1,616 | 1,616 |
| | 2000 | 1,568 | 1,570 | 1,570 |
| | 2001 | 1,613 | 1,469 | 1,500 |
| | 2002 | 1,663 | 1,601 | 1,683 |
| | 2003 | 1,715 | 1,602 | 1,646 |
| | 2004 | 1,768 | 1,529 | 1,532 |
| | 2005 | 1,920 | 1,601 | 1,599 |
| | 2006 | 2,007 | 1,647 | 1,710 |
| | 2007 | 2,183 | 1,945 | 1,710 |
| | 2008 | 2,212 | 2,099 | 2,099 |
| F N S B | 1999 | 83,390 | 83,773 | 83,773 |
| | 2000 | 82,769 | 82,840 | 82,840 |
| | 2001 | 85,293 | 83,261 | 83,530 |
| | 2002 | 87,412 | 84,749 | 84,791 |
| | 2003 | 89,294 | 82,160 | 82,214 |
| | 2004 | 92,414 | 85,453 | 84,979 |
| | 2005 | 94,561 | 87,704 | 87,608 |
| | 2006 | 94,803 | 87,766 | 96,888 |
| | 2007 | 97,986 | 90,963 | 96,888 |
| | 2008 | 97,970 | 89,896 | 97,970 |

SOURCE: (1) Population Division, U.S. Census Bureau, www.census.gov; July 1st estimates. Table 1: Annual Estimates of the Resident Population for the United States, Regions, States, and Puerto Rico: April 1, 2000 to July 1, 2008 (NST-EST2008-01); Release Date: December 22, 2008. Place not available at press time.

(2) Alaska Dept. of Labor and Workforce Development, Research and Analysis Section, and US Census 2000, 1990. Table 2.1 *Population of Alaska by Labor Market Area, Borough and Census Area, 1990-2007* (2008 Vintage Population Estimates). All estimates represent July 1 of that year unless stated otherwise. ADOL website: <http://almis.labor.state.ak.us>.

(3) Alaska Dept. of Commerce, Community and Economic Development (DCCED), Division of Community and Regional Affairs, certified 2008 municipal population, June 1, 2009. DCCED Certified numbers may vary from ADOL population estimates as a result of the population estimate appeal process available to incorporated communities on a yearly basis. Once certified, DCCED numbers may be applied for two consecutive calendar years.

NOTE: City of Fairbanks figures include military population living on Ft. Wainwright. All borough figures include population for City of Fairbanks, City of North Pole, Ft. Wainwright Army Base and Eielson Air Force Base.

** U.S. Census number may be revised annually. Alaska Dept. of Labor and Workforce Dev. numbers are provisional.

Population and Social Conditions

MILITARY POPULATION

Ft. Wainwright Army Base*
By Quarter 2006-2009

| Ft. Wainwright Army Base | Qtr. | Military Active Duty Personnel | Military Dependents | Total | % Change (same Qtr.) fr/prev/yr |
|---------------------------------|-------------|---------------------------------------|----------------------------|--------------|--|
| 2006 | 1st | 5,108 | 5,798 | 10,906 | -1.5% |
| | 2nd | 5,923 | 6,002 | 11,925 | -3.7% |
| | 3rd | 6,541 | 6,384 | 12,925 | -3.7% |
| | 4th | 7,332 | 6,897 | 14,229 | 11.2% |
| 2007 | 1st | 6,834 | 7,440 | 14,274 | 30.9% |
| | 2nd | 6,203 | 7,300 | 13,503 | 13.2% |
| | 3rd | 6,167 | 7,232 | 13,399 | 3.7% |
| | 4th | 5,466 | 8,238 | 13,704 | -3.7% |
| 2008 | 1st | 4,598 | 7,025 | 11,623 | -18.6% |
| | 2nd | 4,593 | 7,413 | 12,006 | -11.1% |
| | 3rd | 4,859 | 7,995 | 12,854 | -4.1% |
| | 4th | 4,866 | 8,017 | 12,883 | -6.0% |
| 2009 | 1st | 4,908 | 8,566 | 13,474 | 15.9% |
| | 2nd | 4,825 | 8,482 | 13,307 | 10.8% |

SOURCE: ALCOM, Alaskan Command, 2006-2009.

* Does not include contract civilian positions or BLM.

MILITARY POPULATION

Eielson Air Force Base*
By Quarter 2006-2009

| Eielson Air Force Base | Qtr. | Military Active Duty Personnel | Military Dependents | Total | % Change (same Qtr.) fr/prev/yr |
|-------------------------------|-------------|---------------------------------------|----------------------------|--------------|--|
| 2006 | 1st | 2,800 | 3,600 | 6,400 | 2.6% |
| | 2nd | 2,850 | 3,601 | 6,451 | -7.0% |
| | 3rd | 2,902 | 3,577 | 6,479 | -0.7% |
| | 4th | 3,101 | 3,602 | 6,703 | 0.0% |
| 2007 | 1st | 3,056 | 3,591 | 6,647 | 3.9% |
| | 2nd | 3,056 | 3,591 | 6,647 | 3.0% |
| | 3rd | 2,260 | 2,803 | 5,063 | -21.9% |
| | 4th | 2,265 | 3,409 | 5,674 | -15.4% |
| 2008 | 1st | 2,087 | 3,056 | 5,143 | -22.6% |
| | 2nd | 2,056 | 3,049 | 5,105 | -23.2% |
| | 3rd | 2,054 | 3,029 | 5,083 | 0.4% |
| | 4th | 2,039 | 3,103 | 5,142 | -9.4% |
| 2009 | 1st | 2,023 | 3,312 | 5,335 | 3.7% |
| | 2nd | 2,007 | 3,343 | 5,350 | 4.8% |

SOURCE: ALCOM, Alaskan Command, 2006-2009.

* Does not include contract civilian positions or BLM.

NOTE: Active Duty 1 qtr. 2007 correction made 9/2007.



**FNSB -
COMPLETE
COUNT
COMMITTEE
OFFICE**

800 Cushman St
Fairbanks, AK 99701
907/459-6809

For more
information
contact us at

census@fnsb.us

Please visit these websites to learn more:

The Fairbanks North Star Borough - U.S. Census 2010 Complete Count Committee links are in the following locations:

<http://co.fairbanks.ak.us/CommunityPlanning/CRC/Default.htm>

<http://co.fairbanks.ak.us/MayorsOffice/EconomicDevelopment/default.htm>

<http://co.fairbanks.ak.us/>

SURVEY

(For the 2010 CENSUS, we need to determine just how many FNSB residents receive their mail at PO Boxes and where they live)

On the following page there is a survey you can fill out and mail back by land mail to CCC - 800 Cushman Street, Fairbanks, AK 99701, or you can go online to any of the website links above and fill it out. Your input is very valuable to the success of this survey. Thank you for participating.

FNSB MAIL ADDRESS SURVEY

An extraordinary number of FNSB residents receive their mail at PO Boxes and the US Census Bureau doesn't mail census questionnaires to PO Boxes. So the FNSB is conducting a questionnaire to determine just how many FNSB residents receive their mail at PO Boxes and where they live. The information is confidential and will be used to help the Census Bureau better understand our community. Thank you!

1. Do you live in the Fairbanks North Star Borough?

- Yes No Not sure

2. Where do you receive your mail?

- Home address General Delivery PO Box Other (please specify)

3. What area of the Fairbanks North Star Borough do you LIVE in?

- | | | |
|---|--|---|
| <input type="checkbox"/> Chena Ridge | <input type="checkbox"/> Farmer's Loop | <input type="checkbox"/> Salcha |
| <input type="checkbox"/> Chena Hot Springs | <input type="checkbox"/> Fox | <input type="checkbox"/> Steese Highway |
| <input type="checkbox"/> City of Fairbanks | <input type="checkbox"/> Ft. Wainwright | <input type="checkbox"/> Two Rivers |
| <input type="checkbox"/> City of North Pole | <input type="checkbox"/> Goldstream | <input type="checkbox"/> UAF |
| <input type="checkbox"/> Eielson AFB | <input type="checkbox"/> Moose Creek | <input type="checkbox"/> Other (please specify) |
| <input type="checkbox"/> Elliot Highway | <input type="checkbox"/> North Pole area | |
| <input type="checkbox"/> Ester | <input type="checkbox"/> Parks Highway | |

4. What is the zip code of your HOME address?

- | | | |
|--------------------------------|--------------------------------|---|
| <input type="checkbox"/> 99701 | <input type="checkbox"/> 99709 | <input type="checkbox"/> 99775 |
| <input type="checkbox"/> 99702 | <input type="checkbox"/> 99712 | <input type="checkbox"/> Don't know |
| <input type="checkbox"/> 99703 | <input type="checkbox"/> 99714 | <input type="checkbox"/> Other (please specify) |
| <input type="checkbox"/> 99705 | <input type="checkbox"/> 99725 | |

5. If you receive mail at a post office, what is the zip code of your POST OFFICE?

- | | | |
|--------------------------------|--------------------------------|---|
| <input type="checkbox"/> 99702 | <input type="checkbox"/> 99708 | <input type="checkbox"/> 99725 |
| <input type="checkbox"/> 99703 | <input type="checkbox"/> 99710 | <input type="checkbox"/> 99775 |
| <input type="checkbox"/> 99705 | <input type="checkbox"/> 99711 | <input type="checkbox"/> Don't know |
| <input type="checkbox"/> 99706 | <input type="checkbox"/> 99714 | <input type="checkbox"/> Get my mail at home |
| <input type="checkbox"/> 99707 | <input type="checkbox"/> 99716 | <input type="checkbox"/> Other (please specify) |

6. Did you live in the Fairbanks North Star Borough in Spring 2000?

- Yes No Don't remember Other (please specify)

7. Were you counted as a Fairbanks North Star Borough resident in the 2000 Census?

- I wasn't in the Fairbanks North Star Borough in 2000 Don't remember
 Yes Other (please specify)
 No

8. If you lived in Fairbanks and were not counted in 2000, did you try to get a questionnaire?

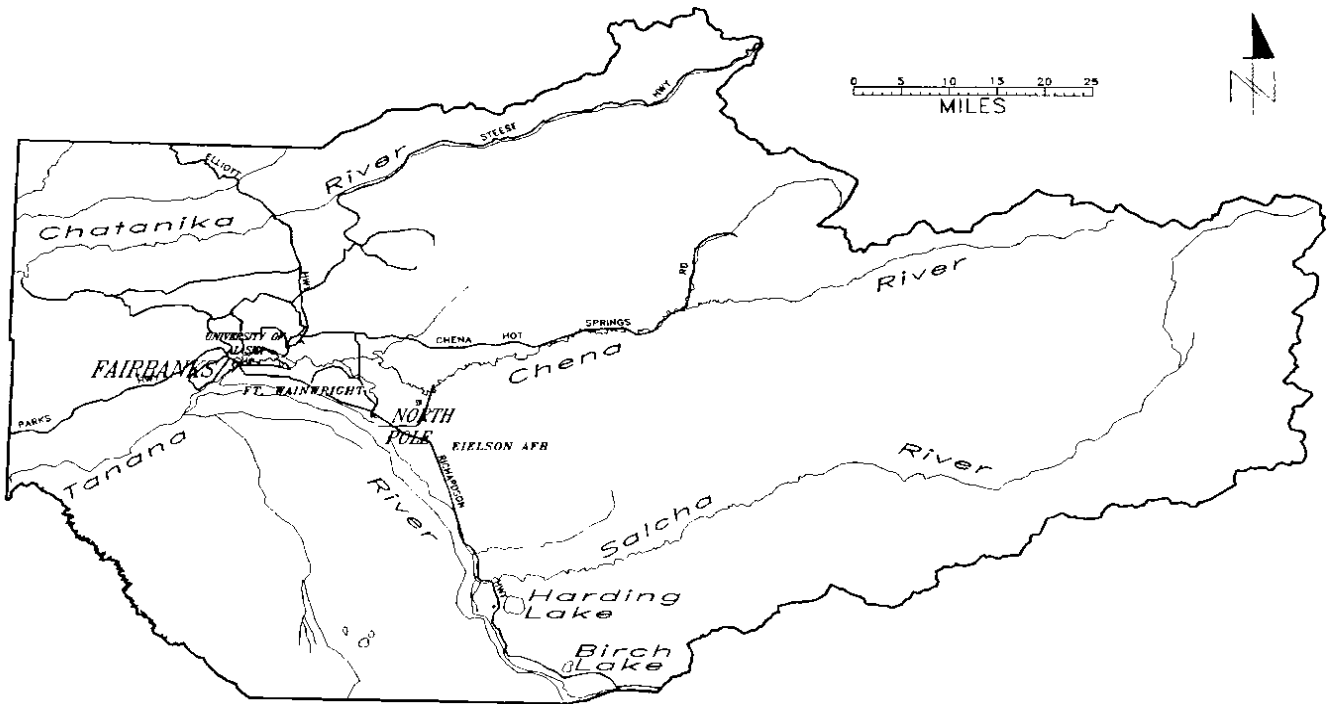
- Yes No I received my questionnaire and didn't fill it out

We'd love to hear your comments!

Comments:

THANK YOU!

FNSB VICINITY MAP



Date of Incorporation: January 1, 1964

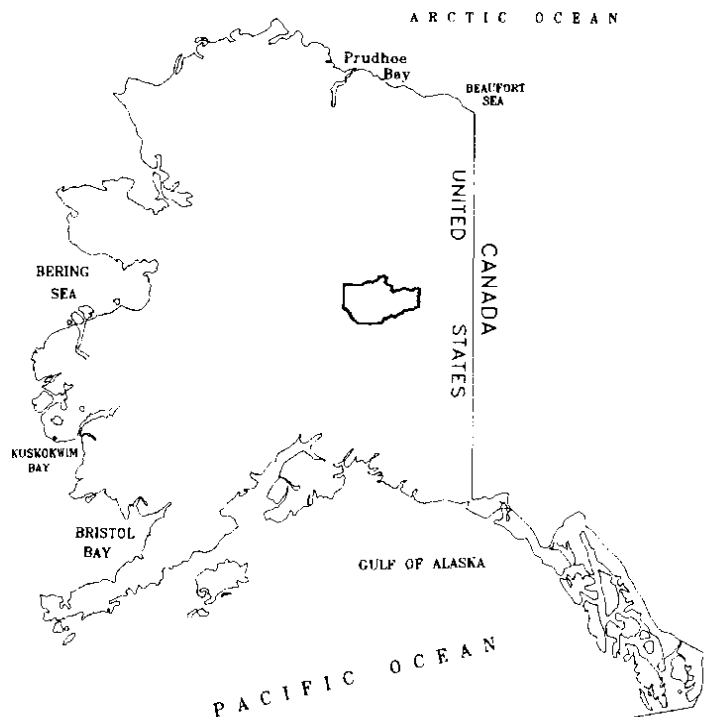
Form of Government: Second Class Borough

Type of Government: Borough Mayor, 3 yr. Term
Assembly, 9 Members
Elected at large, 3 yr. Terms

Population (2008)
U.S. Census: 97,970

Size: 7,361 square miles
19,065 square kilometers

Certified Assessed Valuation (2009): \$7,982,203,416 (non-pipeline)
\$ 694,077,720 (pipeline)



FROM:

Fairbanks North Star Borough
Community Research Center
PO Box 71267
Fairbanks, AK 99707-1267

TO: