

COMMUNITY RESEARCH QUARTERLY

A Socio - Economic Review



COMMUNITY RESEARCH CENTER

The Community Research Center is located on the second floor
of the Borough Administration Building
at 809 Pioneer Road.

Office and Research Library hours are Monday through Friday
8:00 a.m. to Noon and 1:00 p.m. to 5:00 p.m.



CITATION

Tabular and summary information contained herein may be reproduced without special permission. It is requested that any information reproduced be cited as follows: Fairbanks North Star Borough, Community Research Center, *Community Research Quarterly*, Vol. XXXVI, No. 4, 2013.

ACKNOWLEDGMENTS

The Community Research Center would like to thank the many persons, businesses, government agencies and organizations who contributed to this report. FNSB has established a policy of equal opportunity in employment, service, programs and activities.

COVER PAGE

A winter scene taken at Chena Hot Springs Resort, compliments of the Nancy Durham, Planner III, of the Fairbanks North Star Borough.

FAIRBANKS NORTH STAR BOROUGH
COMMUNITY RESEARCH QUARTERLY
A Review of Socio - Economic Trends

Volume XXXVI, Number 4
Winter 2013

BOROUGH MAYOR
Luke Hopkins

COMMUNITY PLANNING DEPARTMENT
Bernardo Hernandez, Director

COMMUNITY RESEARCH CENTER
Jennifer K. Nachtrieb, (ed.) Documentation Coordinator II

Fairbanks North Star Borough, Community Research Center
PO Box 71267, Fairbanks, Alaska 99707-1267
Phone: (907) 459-1212; e-mail: jnachtrieb@fnsb.us
WEBSITE: <http://co.fairbanks.ak.us/CommunityPlanning/CRC>

Table of Contents


	<u>Page</u>
A Spotlight on Community Economic Trends	i-iv
	
Fairbanks Economy at a Glance	1-2
Economic Indicators	3-15
Bank Deposit & Loan Summary	3
Bankruptcies Filed	4
Notices of Default	5
Foreclosures	6
Fairbanks International Airport Freight	7
Fairbanks International Airport Transit Freight	8
Fairbanks International Airport Revenue Landings	9
Fairbanks International Airport Passengers	10
Alaska Highway Statewide Entering Passengers	11
Alaska Highway Statewide Exiting Passengers	11
Alaska Highway Statewide Net Annual Migration Trends	12
Alaska Highway Statewide Net Monthly Migration	12
Hotel / Motel Room Receipts	13
Quarterly Hotel / Motel Room Receipts	13
Annual Hotel / Motel Room Receipts	14
University of Alaska Museum Visitors	15
Employment	16-21
Civilian Labor Force Unemployment Rates	16-17
Average Monthly Employment Estimates by Sector	17
Average Monthly Employment Estimates by Industry	18
Annual Average Monthly Employment by Industry	19
Annual Average Monthly Wage by Industry	20
Quarterly Census of Employment and Wages by Industry	21
Housing	22-27
Apartment/Multi-Plex Vacancy Rates	22
Rental Housing Units Available	23
Average Monthly Rents for Available Housing Units	24
Residential Housing Sales	25
Annual Average Residential Housing Sales	26
New Structures Annual Report	27

Table of Contents

	<u>Page</u>
Cost of Living	28-32
C2ER Cost of Living Index	28-29
Consumer Price Index-U for All Items	29
Consumer Price Index-U (Anchorage)	30
Consumer Price Index-U for All Items (U.S. City Average)	30
Cost of Food at Home for a Week	31
Average Self-Service Unleaded Gasoline Prices	32
Population & Social Conditions	33-41
Population Counts & Estimates	33
Military Population	34
Vital Statistics	35
Birth, Death, Marriage & Divorce Rates	36
College Degrees Awarded	37
Opening Fall Semester headcounts for Credit Enrollment, University of Alaska	37
Fall Public School Enrollments	38
Private School Enrollments	39
Alaska Statewide Correspondence School Enrollments	39
Alcoholic Beverages Distributed or Sold	40
Annual Alcoholic Beverages Distributed or Sold	41

NOTE FROM THE EDITOR:

If you have a change in your address information and wish to continue to receive the hard copy of the *Community Research Quarterly* please advise this office as soon as possible so the database can be altered before the next mailing. In an effort to conserve on postage costs, if your issue of the *Community Research Quarterly* is returned for any reason, we will not attempt to resend. Thank you for your cooperation.

A SPOTLIGHT
ON
*COMMUNITY ECONOMIC TRENDS**

***SPOTLIGHT SOURCE:** *Private spending to grow \$1.2B in '14*, By Elwood Brehmer,
Alaska Journal of Commerce, January 29, 2014. Elwood Brehmer can be reached at
elwood.brehmer@alaskajournal.com.

Private spending to grow \$1.2B in '14

By ELWOOD BREHMER, ALASKA JOURNAL OF COMMERCE
Published: January 29, 2014

Investments in North Slope oil and gas projects will be the main driver behind statewide construction spending growth in the coming year, according to a report by the University of Alaska Anchorage Institute of Social and Economic Research.

The annual forecast projects oil and gas spending on construction work in the state to total \$4.3 billion in 2014, up 34 percent from \$3.2 billion last year. That sector accounts for 46 percent of all construction spending in the state, estimated to be about \$9.2 billion.

Last year's initial projection of \$8.4 billion was revised to \$7.8 billion after oil and gas spending lagged behind expectations in 2013, setting up an even larger increase in anticipated spending this year.

The overall construction spending forecast of \$9.2 billion is an 18 percent increase versus 2013.

"An 18 percent increase over last year — it's pretty amazing. I think we can attribute most of that to SB 21," the oil tax reform legislation signed by Gov. Sean Parnell last spring, Associated General Contractors of Alaska Executive Director John MacKinnon said.

The "More Alaska Production Act," touted by Parnell and Republican legislators as a way to spur investment in the state by oil producers, went into effect Jan. 1. Opponents to the tax structure change got Proposition 1, a referendum to repeal the law, on the August primary ballot after a successful petition campaign.

MacKinnon said the "rosy" forecast, as he called it, extends beyond the oil and gas industry.

Construction employment peaked last year in August at 21,600 jobs across the state, according to Labor Department figures. It marked the most construction jobs in Alaska since September 2005.

Combined private spending in other areas is expected to increase in 2014 as well, by about 5 percent, to about \$2 billion.

Despite a \$1.7 billion cut in the 2014 fiscal year state capital budget — excluding federal appropriations — public construction spending is projected to grow slightly more than 7 percent, from \$2.7 billion in 2013 to \$2.9 billion this year. That is due in large part to the record state capital spend of \$2.8 billion in fiscal 2013, which ended last June 30, when the \$453 million construction bond package approved by voters in the timeframe is included.

It can often take multiple years for money allocated to public construction projects to be dispersed, as large projects usually are not "shovel ready." Likewise, it will probably be several years before the impact of the 2015 fiscal year capital budget — proposed by Parnell at a \$600 million state spend — will be felt across Alaska, MacKinnon has said.

Along that line, activity at the state-funded Port MacKenzie and Tanana River rail projects will continue as expected this year, officials familiar with the projects have stated.

The oil and gas spending on the North Slope will come from ConocoPhillips drill work at Kuparuk, its Greater Moose's Tooth prospect in the National Petroleum Reserve-Alaska, and development of the CD-5 project west of the Colville River, according to the report.

Additionally, BP will concentrate on well workovers in its existing fields. The company is expected to increase capital spending "by several billion (dollars) over the next five years," the report states.

ExxonMobil will continue developing its Point Thomson field east of Prudhoe Bay, which ExxonMobil says requires up to 1,200 workers during the peak winter season.

Major Cook Inlet player Hilcorp announced in December it planned on spending about \$300 million on capital projects in the basin in 2014, similar to its expenditure last year, and drill about 10 new wells.

Alaska mines will likely hold back in 2014. The \$205 million projection is about \$125 million less than the 2013 forecast, largely due to a drop in the price of gold, the report states.

It forecasts \$110 million being spent to run the six large operating mines in the state and less exploration work being done at the Livengood and Donlin Creek gold prospects, along with Pebble.

A combination of public and private dollars, spending by energy utilities should remain fairly flat at about \$850 million, ISER predicts. Construction of new power plants by Matanuska Electric Association and Municipal Light and Power, along with infrastructure expansion by Enstar Natural Gas around Homer will drive spending in Southcentral.

Golden Valley Electric Association's acquisition and subsequent emissions retrofit of a coal-fired power plant in Healy will be big in the Interior.

Verizon's push into the Alaska market will be a boost for telecom spending as well, the report projects.

Construction activity at the state's military installations "will take a big jump this year" to \$103 million, the report states. Military construction work totaled \$33 million last year. The 2014 budget includes seven projects at Fort Wainwright, the largest of which is a \$36 million warm-storage hangar. Defense officials have warned that the spike may be short-lived, however, as uncertainty looms over future federal budgets and President Barack Obama's directive to cut defense spending continues.

Spending on health care facilities was down in 2013 as hospitals in Barrow, Nome and Fairbanks opened their doors and it is expected to remain steady at about \$230 million this year. The largest project will be construction of state-financed patient housing and an associated parking garage at the Alaska Native Medical Center in Anchorage. The state contribution to ANMC work is \$35 million.

Smaller projects around the state including hospital expansions in Ketchikan and on the Kenai Peninsula, along with a veterans' long-term care facility in Haines will collectively make up the bulk of health care construction in the coming year.

Residential and commercial building will combine to account for \$650 million worth of construction activity. While the Cabela's and Bass Pro Shops superstore projects in Anchorage will wrap up, work on large office complexes in the city, including the new Cook Inlet Region Inc. headquarters and the 100,000 square-foot JL Properties project in Midtown Anchorage, will pick up the slack.

The tight Southcentral housing market did not lead to increased building in 2013, and "market pressure will result in a modest increase in new housing starts this year," there and in Southeast, the report states.

Elwood Brehmer can be reached at elwood.brehmer@alaskajournal.com.

THIS PAGE INTENTIONALLY BLANK

ECONOMY AT-A-GLANCE

Fairbanks North Star Borough

Economic Indicator	Current Data Period	One Period Ago	One Year Ago
Reporting Period	4th Qtr '13	% Change from 3rd Qtr. '13	% Change from 4th Qtr. '12
BANKING			
Total Bank Deposits (millions of \$)	\$1,073.7	0.8%	5.8%
Total Bank Loans (millions of \$)	\$662.8	-1.0%	-2.4%
BANKRUPTCIES			
Business	2	100.0%	100.0%
Non-Business	8	-46.7%	-60.0%
TRANSPORTATION			
Fairbanks International Airport			
Incoming Freight (thousands of lbs.)	1,520	-33.7%	-18.8%
Outgoing Freight (thousands of lbs.)	7,228	-29.7%	-8.4%
Transit Freight (thousands of lbs.)	943	86.7%	9.7%
Revenue Landings	5,008	-31.3%	6.4%
Incoming Passengers	96,827	-37.4%	4.1%
Outgoing Passengers	103,888	-34.8%	2.9%
Alaska Highway (statewide)			
Entering Passengers	7,895	-84.0%	1.6%
Exiting Passengers	8,752	-82.5%	16.7%
EMPLOYMENT			
Total Employment	39,400	-5.3%	-0.3%
Mining and Logging	1,800	-10.0%	12.5%
Construction	2,600	-25.7%	8.3%
Manufacturing	500	-16.7%	-16.7%
Trade/Transportation/Utilities.	8,200	-3.5%	7.9%
Information	600	20.0%	20.0%
Financial Activities	1,300	0.0%	-13.3%
Professional & Business Services	2,500	-13.8%	0.0%
Education & Health Services	5,400	0.0%	0.0%
Leisure & Hospitality	3,500	-23.9%	-7.9%
Other Services	1,200	-7.7%	-7.7%
Government	11,700	5.4%	-4.9%

NOTE: Employment numbers rounded to nearest 100.

Fairbanks Economy at a Glance

(continued)

Fairbanks North Star Borough

Economic Indicator	Current Data Period	One Period Ago	One Year Ago
Reporting Period (annual/by qtr.)			
CONSTRUCTION	Annual		
New Structures Annual Report (2013)	288	-22.6%	-20.7%
Reporting Period (annual/by qtr.)			
	4th Qtr. '13	3rd Qtr. '13	4th Qtr. '12
REAL ESTATE			
Single Family Houses			
Number Sold	137	-49.6%	24.5%
Average Price	\$200,527	-12.7%	-1.6%
RENTALS			
Residential Rentals			
Rental Units Advertised	722	21.8%	57.3%
Average Rent (2 bdrm. apartment)	\$1,234	1.6%	6.8%
MILITARY			
Military Active Duty Personnel	8,004	-5.3%	-4.4%
Military Dependents	11,443	-4.5%	-11.0%
POPULATION++			
FNSB (Census annual)*	--	--	--
City of Fairbanks* (annual)	--	--	--
City of North Pole* (annual)	--	--	--
FNSB (DCCED annual)^	99,632	-0.7%	-0.7%
FNSB (ADOL annual)**	99,632	-0.7%	-0.7%
City of Fairbanks** (annual)	32,204	0.4%	0.4%
City of North Pole** (annual)	2,209	2.2%	2.2%

SOURCE: (1) U.S. Census Bureau, Population Division, July 1st estimates. 2012 Population Estimates. PEPANNRES Table: *Annual Estimates of the Resident Population for Counties of Alaska: April 1, 2010 to July 1, 2012*, also Table: *Annual Estimates of the Resident Population in Alaska: now known as *Intercensal Estimates of the Resident Population for Incorporated Places and Minor Civil Divisions: April 1, 2000 to July 1, 2012*, May 2013. Geographic change notes defined at: <http://www.census.gov>.

(2) Alaska Department of Labor and Workforce Development, Research and Analysis Section; and US Census Bureau. *Alaska Population Estimates by Borough, Census Area, City and Census Designated Place (CDP), 2010-2013*, Vintage 2013 ^, and *Alaska Population Estimates by Borough, Census Area, City and Census Designated Place (CDP), 2010-2013*, Vintage 2013 ^. All numbers are based on 2010 Census geography. ADOL website: <http://laborstats.alaska.gov>, February 2014.

(3) Alaska Department of Commerce, Community and Economic Development (DCCED), Division of Community and Regional Affairs, 2013 Commissioner Certified Estimates, January 15, 2013. DCCED Certified numbers may vary from ADOL population estimates as a result of the Population Estimate Appeal process available to incorporated communities on a yearly basis, as well as annual revisions by ADOL. Once certified, DCCED numbers may be applied for two consecutive calendar years. DCCED website: http://www.commerce.state.ak.us/dca/commdb/CF_COMMDB.htm.

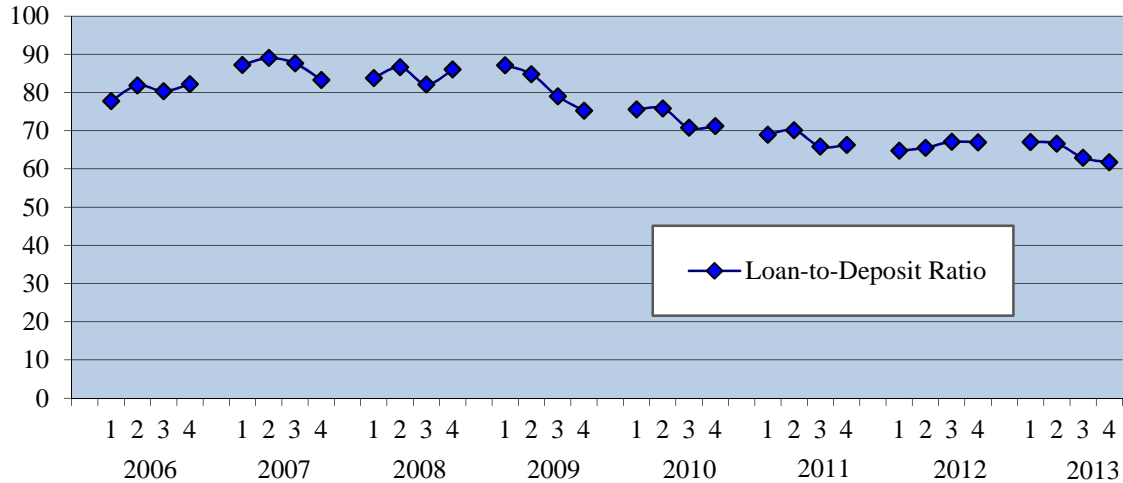
NOTE: The FNSB numbers include population for all communities within the Borough plus Fort Wainwright Army Base and Eielson Air Force Base.

** U.S. Census and ADOL estimated numbers may be revised annually.

ECONOMIC INDICATORS

BANK DEPOSIT & LOAN SUMMARY

Fairbanks North Star Borough
2006-2013, End of Quarter



BANK DEPOSIT & LOAN SUMMARY

Fairbanks North Star Borough
2006-2013

	2006	2007	2008*	2009	2010	2011	2012	2013
Deposits	-----Millions of Dollars-----							
March 31	\$698.4	\$699.9	\$751.1	\$786.9	\$873.8	\$938.3	\$957.0	\$1,007.8
June 30*	\$717.2	\$731.2	\$754.6	\$826.9	\$889.4	\$929.3	\$983.6	\$1,023.2
Sept. 30	\$747.3	\$752.7	\$807.4	\$847.0	\$927.1	\$966.3	\$1,021.4	\$1,064.8
Dec. 31	\$741.1	\$762.1	\$782.3	\$887.0	\$949.2	\$960.3	\$1,014.6	\$1,073.7
Loans	-----Millions of Dollars-----							
March 31^	\$543.2	\$610.5	\$629.1	\$685.4	\$660.0	\$646.9	\$619.5	\$675.3
June 30*	\$587.0	\$650.9	\$653.7	\$701.4	\$674.4	\$651.6	\$644.7	\$681.8
Sept. 30	\$600.7	\$659.8	\$662.9	\$669.0	\$656.0	\$636.1	\$685.6	\$669.8
Dec. 31*	\$608.9	\$634.6	\$673.0	\$667.6	\$676.0	\$636.7	\$679.1	\$662.8

SOURCE: Denali State Bank, (Interior City Branch), 1st National Bank of Anchorage, Mt. McKinley Bank, Northrim Bank, Wells Fargo Bank Alaska, N.A. (local branches), personal communications 2006-2013.

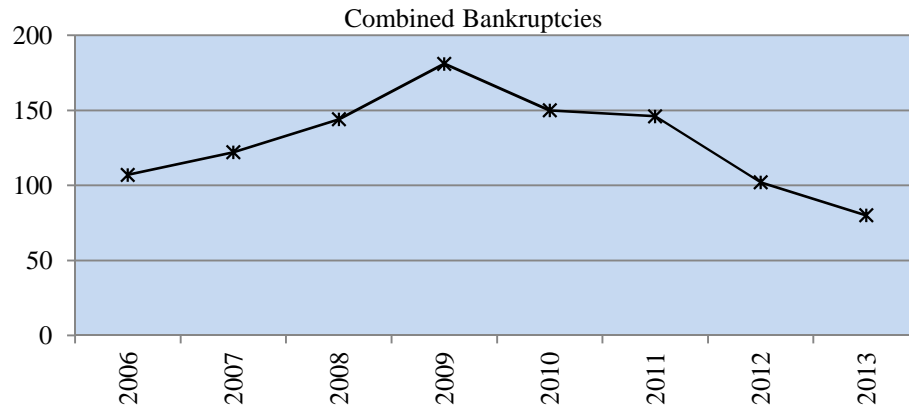
* Adjustment made to data entered March-June 2008 in October 2008.

^ Calculation adjusted loan value only, November 2007.

Economic Indicators

TOTAL BANKRUPTCIES FILED

Alaska Fourth Judicial District, Fairbanks Office
2006-2013



BANKRUPTCIES FILED

Alaska Fourth Judicial District, Fairbanks Office
2006-2013

	2006	2007	2008	2009	2010*	2011*	2012*	2013*
Nonbusiness								
1st Quarter	9	20	20	31	38	40	24	28
2nd Quarter	20	25	22	54	39	37	26	26
3rd Quarter	24	21	41	42	38	35	31	15
4th Quarter	37	32	40	48	33	33	20	8
Total	90	98	123	175	148	145	101	77
% Change from Previous Year	-75%	9%	26%	42%	-15%	-2%	-30%	-24%
Business								
1st Quarter	1	3	6	0	1	0	0	0
2nd Quarter	3	9	6	2	1	1	0	0
3rd Quarter	7	8	7	2	0	0	0	1
4th Quarter	6	4	2	2	0	0	1	2
Total	17	24	21	6	2	1	1	3
% Change from Previous Year	-70%	41%	-13%	-71%	-67%	-50%	0%	200%
Combined Annual Total	107	122	144	181	150	146	102	80

SOURCE: U.S. Courts website: <http://www.akb.uscourts.gov>, and personal communications with FNSB Collections Department, May 2006-2013.

NOTE: *Revised formulas and chart, November 18, 2013.*

Beginning in January 2009 the U.S. Bankruptcy Court changed the way they report bankruptcy cases. Due to staffing changes the information is no longer individually entered. They now use the nationwide formatting which does not sort business and non-business categories. FNSB will research the cases reported in effort to separate the two categories.

* Beginning First Quarter 2010 bankruptcy records reflect refined research documenting through FNSB Collections Department who utilizes PACER (Public Access To Court Electronic Records).

Economic Indicators

NOTICES OF DEFAULT

Fairbanks Recording District*
2007-2013 ^

	2007	2008	2009	2010	2011	2012	2013	% Change 2012-13
January	16	21	20	20	14	8	30	275%
February	8	17	32	26	33	20	20	0%
March	15	16	26	15	27	25	13	-48%
April	16	16	21	21	22	14	16	14%
May	22	25	18	25	15	26	18	-31%
June	24	27	18	30	18	24	16	-33%
July	8	25	34	22	13	23	25	9%
August	14	20	26	23	25	22	24	9%
September	17	27	20	26	21	27	17	-37%
October	9	27	16	19	12	21	19	-10%
November	11	14	16	11	14	12	19	58%
December	7	25	24	14	20	12	33	175%
Total	167	260	271	252	234	234	250	7%

SOURCE: Alaska Department of Natural Resources website: <http://www.dnr.alaska.gov>, 2007-2013.

NOTE: Notices of default indicate the terms of a Deed of Trust or Mortgage have been breached, i.e. delinquency of payments. The notices need not result in foreclosures because deficiencies can be corrected. There can be multiple notices if a default is corrected but the Deed of Trust or Mortgage terms are breached again in the future. A single notice can be for more than one parcel. Notices are tabulated by date of initiation.

^ Current data supersedes previous figures reported. The data presented only reflects the number of notice of defaults have been recorded and does not reflect any effect of amendments, modifications or terminations of notice of defaults. Please contact the Community Research Center for any additional questions.

* **Fairbanks Recording District** includes (*bolded communities may reside in the FNSB*) **A.G.M.(Camp); Alaska Lodge;** Alatna; **Alder Creek; Alder Creek Camp;** Alexanders Village; Allakaket; **Amy Creek;** Arctic City (Aband); **Aurora Lodge;** Barlett; **P.O. (Ester);** Bear Paw; Bearman Cabin; Beaver; Beaver Cr. Yukon; Bend S.C.; Berry; Berry Camp; Bettles; Bettles Field (Evansville); Biedermans Camp; Big Delta; Big Horn; Big Lake; Birch Creek; Black Jack Cabin; Bonanza; Bonanza Bar; Boundary; Burnt Paw; **Cache;** Canyon Creek Camp; Canyon Vil; Caribou; Caribou Bar; Caro; Cathedral Bluffs; Cathedral Rapids; Central; Chalkyitsik; Chandalar; Chapman; **Chatanika; Chena; Chena Hot Springs;** Chicken; Chisana; Christian; Circle; Circle Hot Springs; **Cleary Summit;** Coal Creek; Cold Foot; **College;** Crooked Creek; Dahten; Dall; Dalton; Delta Junction; Demarcation Pt; Diamond; Dome; Dome Creek; Donnelly; Doran; Dot Lake; Eagle; Eagle Creek; Eagle Village; **Eielson Air Force Base; Ester (Bartlett; P.O.);** Evansville (Bettles Field); **Fairbanks; Fairbanks Creek Camp; Fiftysix Mile Cabin;** Fish Camp; Fishook; Flume Creek; Fort Greely; Fort Hamlin; **Fort Wainwright;** Fort Yukon; Forty-Mile R.H. (Tetlin Junction); Fortysix Mile Cabin; Fossil Cr. S.C.; **Fox;** Franklin; Glacier; Glacier (Mine); Gold Bench; **Goldstream; Graehl;** Healy Lake; Heinie Creek; Henshaw Cabin; Horsfeld ; Jack Wade; Joe Ward Camp; John Herbert Village; Johnnie Frog Cabin; Johnson River; Joseph; Kantishna; Kochumstuk; **Lake Harding Store;** Lake Minchumina; Larson Cabin; Liberty; Lilywig Creek; Livengood; Log Cabin Inn; Mansfield Village; **Martin;** McCallum; Miller House; Millers Camp (Aband); Millers R.H.; Montana Creek Camp; **Moose Creek;** Mudbank Cabin; **Murphy Dome;** Muskeg; Myrtle Creek; Nabesna; Nabesna Village; Nation (Aband); Ninemile Cabin; Nineteen Mile; Nolan; **North Pole;** North Slope; Northway; Northway Junction; Old Camp; Old Rampart; **Old Saulich; Olnes;** Oscars Cabin; Poker Creek; Yukon Post & Scoby; Richardson; **Riverside; Roosevelt; Salcha; Salchakat;** Salmon; Salmon River; Sam Creek; **Saulich;** Scottie Creek; Seventeen mile; Shaw Creek Lodge; Shuman House; **Silver Fox R.H.;** Sixtymile (Glacier P.O.) Yukon; Sourdough Camp; **South Fork;** Standard; **Steele Creek;** Stephens (Stevens); Swede Boys Camp; Tanacross; Ten Mile; Tenderfoot; Tetlin; Tetlin Jct; Thirtysix Mile; Cabin Tok (Junction); Toklat; Tolovana; Tramway Bar; Tsukon Cabin; Twentyfour Mile Cabin; Twentytwo Mile Village; **Two Rivers;** United States Camp; Venetie; Venetie Landing; Wallen; **West Fork (Aband);** White Eye; Wild Lake; Willow House; Wiseman; Woodchopper (Aband); Woodchopper Creek.

Economic Indicators

FORECLOSURES

Fairbanks Recording District*
2007-2013 ^

	2007	2008	2009	2010	2011	2012	2013	% Change 2012-13
January	7	5	12	15	11	14	19	36%
February	6	9	20	12	10	11	9	-18%
March	3	6	16	13	10	18	7	-61%
April	3	7	14	14	14	9	22	144%
May	6	10	12	13	7	18	14	-22%
June	3	10	13	10	15	10	6	-40%
July	13	5	20	13	12	17	22	29%
August	8	8	10	16	12	12	25	108%
September	6	11	14	21	11	8	13	63%
October	8	14	20	13	9	9	27	200%
November	3	4	15	10	19	18	16	-11%
December	3	13	15	15	14	18	13	-28%
Total	69	102	181	165	144	162	193	19%

SOURCE: Alaska Department of Natural Resources website: <http://www.dnr.alaska.gov>, 2007-2013.

NOTE: Foreclosures in this table indicate the loss of property by a borrower as a result of an Affidavit of Foreclosure, Deed in Lieu of Foreclosure, Relinquishment, Trustee Deed, or Judicial Deed of Foreclosure. More than a single parcel may be affected by the foreclosure.

^ Current data supersedes previous figures reported.

CORRECTION: 2004-2006 adjustments occurred and are reflected because Patents were collected/reflected in error, January 2007. Patents are not foreclosures but rather a transfer of property between governments or from a government to an individual.

* **Fairbanks Recording District** includes (*bolded communities may reside in the FNSB*) **A.G.M. (Camp); Alaska Lodge;** Alatna; **Alder Creek; Alder Creek Camp;** Alexanders Village; Allakaket; **Amy Creek;** Arctic City (Aband); **Aurora Lodge;** Barlett; **P.O. (Ester);** Bear Paw; Bearman Cabin; Beaver; Beaver Cr. Yukon; Bend S.C.; Berry; Berry Camp; Bettles; Bettles Field (Evansville); Biedermans Camp; Big Delta; Big Horn; Big Lake; Birch Creek; Black Jack Cabin; Bonanza; Bonanza Bar; Boundary; Burnt Paw; **Cache;** Canyon Creek Camp; Canyon Vil; Caribou; Caribou Bar; Caro; Cathedral Bluffs; Cathedral Rapids; Central; Chalkyitsik; Chandalar; Chapman; **Chatanika;** **Chena; Chena Hot Springs;** Chicken; Chisana; Christian; Circle; Circle Hot Springs; **Cleary Summit;** Coal Creek; Cold Foot; **College;** Crooked Creek; Dahten; Dall; Dalton; Delta Junction; Demarcation Pt; Diamond; Dome; Dome Creek; Donnelly; Doran; Dot Lake; Eagle; Eagle Creek; Eagle Village; **Eielson Air Force Base; Ester (Bartlett; P.O.);** Evansville (Bettles Field); **Fairbanks;** **Fairbanks Creek Camp; Fiftysix Mile Cabin;** Fish Camp; Fishook; Flume Creek; Fort Greely; Fort Hamlin; **Fort Wainwright;** Fort Yukon; Forty-Mile R.H. (Tetlin Junction); Fortysix Mile Cabin; Fossil Cr. S.C.; **Fox;** Franklin; Glacier; Glacier (Mine); Gold Bench; **Goldstream; Graehl;** Healy Lake; Heinie Creek; Henshaw Cabin; Horsfeld ; Jack Wade; Joe Ward Camp; John Herbert Village; Johnnie Frog Cabin; Johnson River; Joseph; Kantishna; Kochumstuk; **Lake Harding Store;** Lake Minchumina; Larson Cabin; Liberty; Lilywig Creek; Livengood; Log Cabin Inn; Mansfield Village; **Martin;** McCallum; Miller House; Millers Camp (Aband); Millers R.H.; Montana Creek Camp; **Moose Creek;** Mudbank Cabin; **Murphy Dome;** Muskeg; Myrtle Creek; Nabesna; Nabesna Village; Nation (Aband); Ninemile Cabin; Nineteen Mile; Nolan; **North Pole;** North Slope; Northway; Northway Junction; Old Camp; Old Rampart; **Old Saulich;** **Olmes;** Oscars Cabin; Poker Creek; Yukon Post & Scoby; Richardson; **Riverside; Roosevelt; Salcha; Salchakat;** Salmon; Salmon River; Sam Creek; **Saulich;** Scottie Creek; Seventeen mile; Shaw Creek Lodge; Shuman House; **Silver Fox R.H.;** Sixtymile (Glacier P.O.) Yukon; Sourdough Camp; **South Fork;** Standard; **Steele Creek;** Stephens (Stevens); Swede Boys Camp; Tanacross; Ten Mile; Tenderfoot; Tetlin; Tetlin Jct; Thirtysix Mile; Cabin Tok (Junction); Toklat; Tolovana; Tramway Bar; Tsukon Cabin; Twentyfour Mile Cabin; Twentytwo Mile Village; **Two Rivers;** United States Camp; Venetie; Venetie Landing; Wallen; **West Fork (Aband);** White Eye; Wild Lake; Willow House; Wiseman; Woodchopper (Aband); Woodchopper Creek.

Economic Indicators

FAIRBANKS INTERNATIONAL AIRPORT FREIGHT*
2007-2013

	2007	2008	2009	2010	2011	2012	2013	% Change 2012-13
Incoming	----- Thousands of Pounds -----							
January	764	710	616	477	1,007	307	449	46%
February	907	724	647	482	459	500	425	-15%
March	994	802	6,189	637	1,120	587	470	-20%
April	1,041	879	627	739	597	557	618	11%
May	1102	914	657	1,752	652	680	622	-9%
June	1,002	1,557	633	1,810	615	663	600	-10%
July	968	983	658	709	678	698	728	4%
August	1,065	1,045	673	754	716	759	814	7%
September	1,036	1,035	706	857	803	707	750	6%
October	880	930	947	611	637	699	635	-9%
November	868	714	529	574	524	574	460	-20%
December	570	552	529	501	539	599	425	-29%
Total	11,197	10,845	13,411	9,903	8,347	7,330	6,996	-5%
Outgoing	----- Thousands of Pounds -----							
January	3,368	2,182	1,806	2,189	2,883	2,666	1,871	-30%
February	3,156	2,681	2,257	2,760	1,539	2,590	2,365	-9%
March	3,992	2,677	5,667	3,191	2,776	2,721	1,394	-49%
April	3,552	2,935	3,216	2,929	2,482	2,670	2,781	4%
May	3,324	3,077	2,836	1,863	2,587	4,112	3,162	-23%
June	4,096	3,126	3,188	2,511	3,340	3,574	3,740	5%
July	3,754	3,595	3,624	3,600	3,017	3,830	3,658	-4%
August	4,726	2,930	3,513	3,402	3,650	3,956	3,619	-9%
September	3,311	2,768	3,202	3,652	3,233	4,143	3,003	-28%
October	2,617	3,407	2,951	3,023	2,660	2,857	3,043	7%
November	2,982	2,479	2,595	2,254	2,623	2,310	1,982	-14%
December	2,314	2,866	2,017	2,542	2,775	2,725	2,203	-19%
Total	41,192	34,723	36,872	33,916	33,565	38,154	32,821	-14%

SOURCE: Alaska Department of Transportation and Public Facilities, Fairbanks International Airport, "Fairbanks International Airport Statistical Report", 2007-2013.

NOTE: UPS made a sizeable stop in March 2009. Everts Air Fuel notable stop in May-June 2010. Sizeable stop by a domestic carrier in January 2011. Kalitta Air stopped at FAI March 2011. Frontier Flying Service, Lynden Air Cargo, and Tatonduk Outfitters boosted numbers in May 2012.

* Numbers are preliminary and may be subject to revision.

Economic Indicators

FAIRBANKS INTERNATIONAL AIRPORT TRANSIT FREIGHT*^ 2007-2013

	2007	2008	2009	2010	2011	2012	2013	% Change 2012-13
	-----Thousands of Pounds-----							
January	575	299	463	572	886	276	631	129%
February	1,410	341	298	1,543	235	282	270	-4%
March	483	335	14,296	1,118	258	361	670	86%
April	650	338	302	296	297	750	276	-63%
May	699	261	245	342	344	326	291	-11%
June	823	307	361	1,574	342	370	109	-71%
July	371	4,334	359	327	341	397	250	-37%
August	572	5,168	350	593	321	350	215	-39%
September	376	329	292	8,508	305	926	40	-96%
October	805	1,294	268	451	309	348	151	-57%
November	577	317	748	993	293	211	469	122%
December	1,362	553	940	364	350	301	323	7%
Total	8,703	13,876	18,922	16,681	4,281	4,898	3,695	-25%

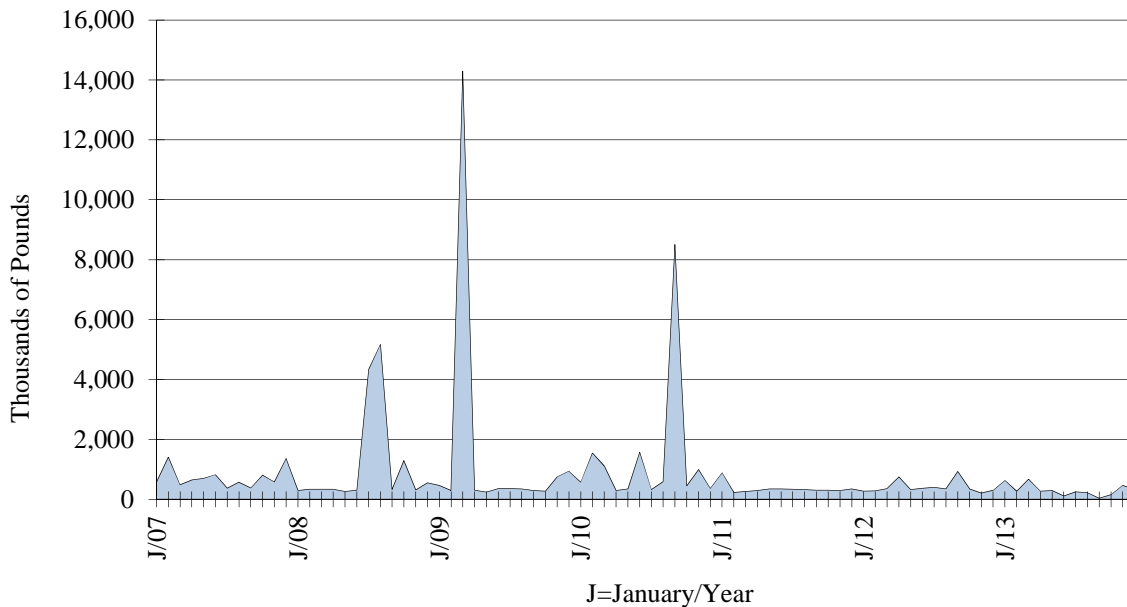
SOURCE: Alaska Department of Transportation and Public Facilities, Fairbanks International Airport, "Fairbanks International Airport Statistical Report", 2007-2013.

NOTE: On average FAI should see between 70-100 operations from *Volga-Dnepr Airlines* per year. Ukraine-based *Antonov Design Bureau*, made transit landings Feb-Mar 2010.

^ International Airlines: Evergreen and Volga-Dnepr made non-routine stops at FAI in July-August 2008. UPS made a sizeable stop in March 2009. Asiana, Cathay Pacific, China Air, Nippon Cargo, Atlas Air, China Cargo, and Evergreen International plus domestic carriers Fed Ex and UPS had transit landings in September and November 2010. Cathay Pacific and Nippon Cargo boosted numbers reported in Apr 2012, Jan & Mar 2013. Cathay Pacific, Nippon Cargo and China Air increase values in Sept 2012.

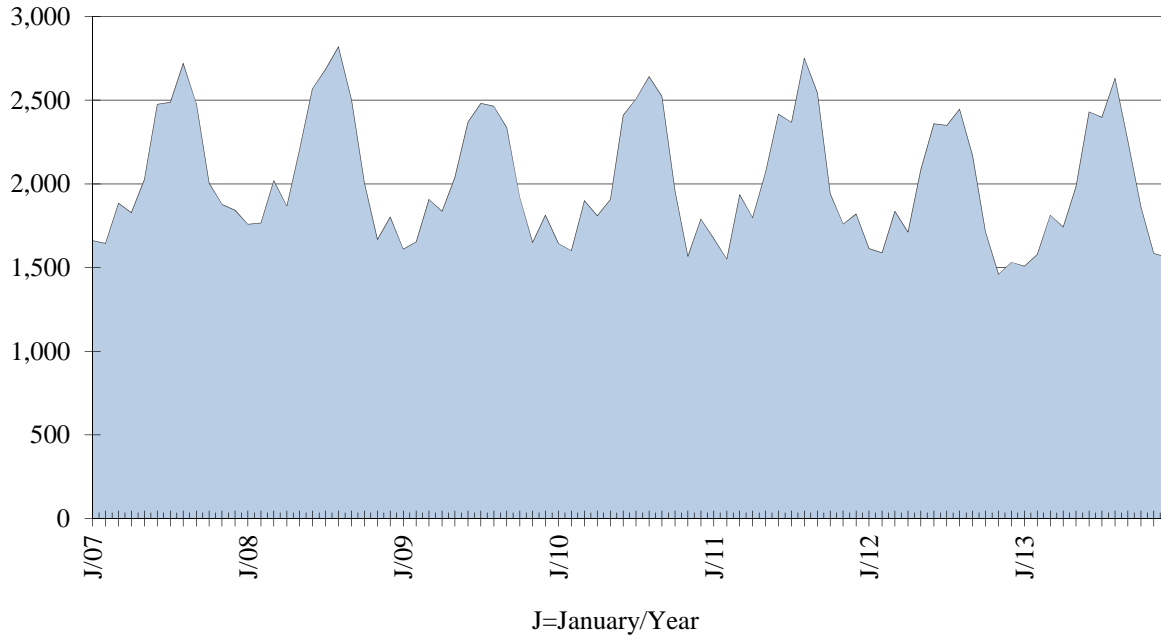
* Numbers are preliminary and may be subject to revision.

FAIRBANKS INTERNATIONAL AIRPORT TRANSIT FREIGHT 2007-2013



Economic Indicators

FAIRBANKS INTERNATIONAL AIRPORT REVENUE LANDINGS
2007-2013



FAIRBANKS INTERNATIONAL AIRPORT REVENUE LANDINGS*
2007-2013

	2007	2008	2009	2010	2011	2012	2013	% Change 2012-13
January	1,662	1,758	1,610	1,643	1,673	1,614	1,508	-7%
February	1,644	1,766	1,653	1,601	1,551	1,588	1,578	-1%
March	1,885	2,019	1,907	1,900	1,935	1,836	1,813	-1%
April	1,828	1,868	1,836	1,810	1,797	1,712	1,742	2%
May	2,028	2,208	2,039	1,906	2,070	2,085	1,983	-5%
June	2,476	2,571	2,370	2,410	2,416	2,360	2,431	3%
July	2,488	2,686	2,481	2,510	2,368	2,349	2,398	2%
August	2,720	2,820	2,464	2,641	2,751	2,447	2,631	8%
September	2,483	2,503	2,338	2,523	2,544	2,167	2,258	4%
October	2,005	2,009	1,922	1,957	1,942	1,715	1,862	9%
November	1,878	1,668	1,650	1,567	1,760	1,459	1,585	9%
December	1,843	1,802	1,813	1,791	1,820	1,532	1,561	2%
Total	24,940	25,678	24,083	24,259	24,627	22,864	23,350	2%

SOURCE: Alaska Department of Transportation and Public Facilities, Fairbanks International Airport, "Fairbanks International Airport Statistical Report", 2007-2013.

* Numbers are preliminary and may be subject to revision.

Economic Indicators

FAIRBANKS INTERNATIONAL AIRPORT PASSENGERS*

2007-2013

	2007	2008	2009	2010	2011	2012	2013	% Change 2012-13
Incoming								
January	33,903	33,333	32,118	32,275	33,897	33,555	34,474	3%
February	28,548	31,801	29,051	29,677	30,763	31,566	31,104	-1%
March	33,825	35,869	33,266	34,689	39,085	37,380	38,735	4%
April	29,406	30,386	28,065	29,191	30,449	30,156	29,853	-1%
May	49,863	45,270	40,536	40,531	41,461	42,888	41,734	-3%
June	58,926	60,012	51,532	51,352	51,949	56,506	53,673	-5%
July	61,865	60,249	54,055	56,896	55,490	57,927	59,516	3%
August	62,223	64,713	54,191	57,370	57,039	58,021	57,174	-1%
September	38,013	39,664	37,907	37,040	38,298	39,404	38,093	-3%
October	33,784	31,565	47,049	35,120	32,048	31,710	33,781	7%
November	32,184	28,568	31,077	29,939	30,024	30,085	29,534	-2%
December	32,339	31,534	31,855	32,823	31,408	31,250	33,512	7%
Total	494,879	492,964	470,702	466,903	471,911	480,448	481,183	0%
Outgoing								
January	28,912	29,821	29,763	28,908	30,157	29,447	30,946	5%
February	28,144	31,495	28,742	28,955	29,911	31,231	30,457	-2%
March	34,049	35,259	32,379	34,426	38,609	37,143	38,519	4%
April	28,648	29,871	27,517	29,076	29,943	29,746	29,952	1%
May	37,992	40,420	35,530	36,495	37,776	40,461	38,411	-5%
June	54,648	54,765	48,923	47,899	48,027	50,765	49,715	-2%
July	55,668	58,257	52,252	54,198	52,019	55,564	56,807	2%
August	57,332	58,267	50,500	53,742	53,832	56,668	56,543	0%
September	43,330	44,796	43,105	44,985	45,230	45,283	45,978	2%
October	35,169	34,349	35,654	36,204	33,996	33,915	35,712	5%
November	32,430	28,909	31,291	30,499	30,905	30,909	30,748	-1%
December	35,697	34,171	36,778	36,844	35,921	36,169	37,428	3%
Total	472,019	480,380	452,434	462,231	466,326	477,301	481,216	1%

SOURCE: Alaska Department of Transportation & Public Facilities, Fairbanks International Airport, "Fairbanks International Airport Statistical Report", 2007-2013.

NOTE: Numbers do not include passengers in transit.

* Numbers are preliminary and may be subject to revision.

Economic Indicators

ALASKA HIGHWAY STATEWIDE ENTERING PASSENGERS*

Via the Yukon Territory
2007-2013

	2007	2008	2009	2010	2011	2012	2013	% Change 2012-13
January	2,733	2,108	2,388	2,216	2,213	1,868	1,888	1%
February	2,301	2,365	2,419	2,139	2,350	2,037	1,970	-3%
March	3,806	3,681	3,958	3,434	3,992	3,688	3,358	-9%
April	5,529	5,168	4,899	5,662	5,068	4,611	4,592	0%
May	13,386	11,033	12,447	11,989	11,732	10,430	10,290	-1%
June	28,967	17,887	22,929	23,610	22,411	21,800	22,299	2%
July	27,583	16,946	24,187	21,002	22,964	24,446	23,400	-4%
August	21,776	13,246	18,311	16,553	20,063	18,903	18,272	-3%
September	8,584	5,987	7,954	5,829	7,901	7,409	7,661	3%
October	3,549	3,832	3,803	3,949	3,512	3,489	3,296	-6%
November	2,806	2,096	2,783	2,547	2,424	2,426	2,467	2%
December	2,456	2,145	2,237	2,334	2,016	1,854	2,132	15%
Total	123,476	86,494	108,315	101,264	106,646	102,961	101,625	-1%

SOURCE: U.S. Department of Justice, Immigration and Naturalization Service, District 32, (Tok) personal communications, 2007-2013.

NOTE: This entry point includes statewide travel for automobiles on the Alaska Highway and, during the summer, the Taylor Highway (Poker Creek).

* Current year figures subject to revisions.

NA not available.

ALASKA HIGHWAY STATEWIDE EXITING PASSENGERS*

Via the Yukon Territory
2007-2013

	2007	2008	2009	2010	2011	2012	2013	% Change 2012-13
January	1,873	1,783	1,491	1,688	1,483	1,485	1,640	10%
February	1,970	1,812	2,018	1,643	1,657	1,553	1,376	-11%
March	3,204	2,455	2,380	2,542	2,297	2,617	2,142	-18%
April	3,701	2,608	2,884	3,155	2,615	2,719	2,962	9%
May	7,283	6,990	7,057	7,358	6,771	6,171	6,092	-1%
June	18,767	15,502	13,932	14,771	15,473	14,116	15,021	6%
July	24,747	22,729	20,196	24,479	22,377	20,212	19,144	-5%
August	24,601	21,827	20,089	11,766	20,734	20,268	20,783	3%
September	13,657	10,585	10,522	11,196	10,341	9,859	10,157	3%
October	4,827	3,657	4,145	4,673	4,470	3,485	4,135	19%
November	2,387	2,054	2,781	2,070	2,213	2,074	3,035	46%
December	2,326	1,573	1,998	1,613	1,867	1,942	1,582	-19%
Total	109,343	93,575	89,493	86,954	92,298	86,501	88,069	2%

SOURCE: Canadian Customs Border Services, Area Ports, Yukon Government, 2007-2013.

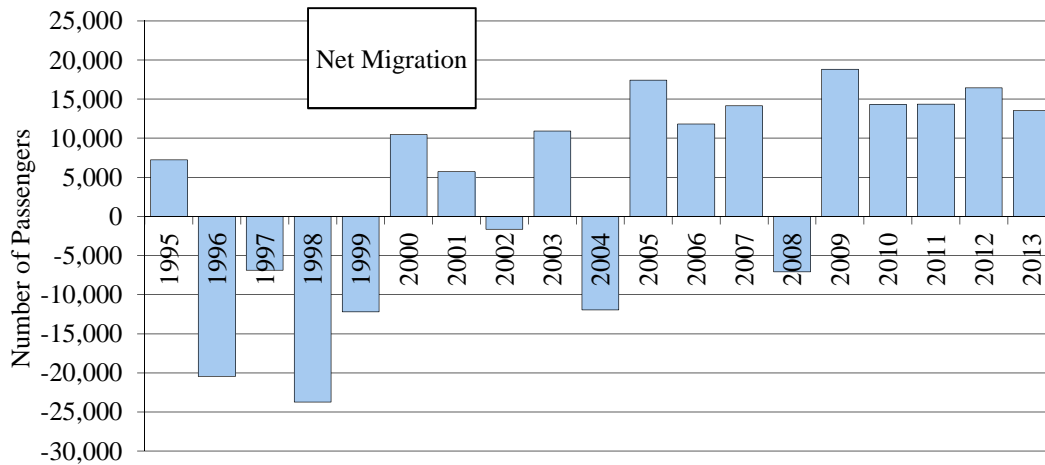
NOTE: This exit point includes statewide travel for automobiles on the Alaska Highway (Beaver Creek) and, during the summer through September 15th, the Taylor Highway (Little Gold).

* Current year figures subject to revisions.

Economic Indicators

ALASKA HIGHWAY STATEWIDE NET ANNUAL MIGRATION TRENDS

Via the Yukon Territory
2000-2013



SOURCE: U.S. Department of Justice, Immigration and Naturalization Service, District 32, and Customs Border Services, Area Ports, Yukon Government, Canada, personal communications 1995-2013.

ALASKA HIGHWAY STATEWIDE NET MONTHLY MIGRATION*

Via the Yukon Territory
2007-2013

	2007	2008	2009	2010	2011	2012	2013
January	860	325	897	528	730	383	248
February	331	553	401	496	693	484	594
March	602	1,226	1,578	892	1,695	1,071	1,216
April	1,828	2,560	2,015	2,507	2,453	1,892	1,630
May	6,103	4,043	5,390	4,631	4,961	4,259	4,198
June	10,200	2,385	8,997	8,839	6,938	7,684	7,278
July	2,836	-5,783	3,991	-3,477	587	4,234	4,256
August	-2,825	-8,581	-1,778	4,787	-671	-1,365	-2,511
September	-5,073	-4,598	-2,568	-5,367	-2,440	-2,450	-2,496
October	-1,278	175	-342	-724	-958	4	-839
November	419	42	2	477	211	352	-568
December	130	572	239	721	149	-88	550
Net	14,133	-7,081	18,822	14,310	14,348	16,460	13,556

SOURCE: U.S. Department of Justice, Immigration and Naturalization Service, District 32, and Customs Border Services, Area Ports, Yukon Government, Canada, personal communications 2007-2013.

NOTE: Numbers denote the difference between the number of passengers entering and exiting statewide Alaska on the Alaska Highway and the Taylor Highway (summer only through September 15th).

* Current year figures subject to revisions.

NA not available.

Economic Indicators

HOTEL/MOTEL ROOM RECEIPTS*

Fairbanks North Star Borough
2009-2013

Quarter	2009	2010	2011	2012	2013	% Change 2012-13
1st	\$5,554,495	\$5,549,520	\$6,317,082	\$6,603,066	\$7,170,000	8.6%
2nd	\$11,750,227	\$14,817,922	\$13,757,533	\$14,464,988	\$14,031,111	-3.0%
3rd	\$25,311,523	\$27,183,699	\$26,099,065	\$28,737,266	\$25,686,646	-10.6%
4th	\$7,176,965	\$6,887,983	\$7,429,594	\$8,886,940	\$10,909,172	22.8%
Total	\$49,793,210	\$54,439,124	\$53,603,274	\$58,692,260	\$57,796,929	-1.5%

SOURCE: City of Fairbanks, Finance Dept.; City of North Pole, Finance Dept.; FNSB, Financial Services, personal communications, 2009-2013.

NOTE: Room receipt figures are based on hotel/motel bed tax which is 8%. Receipts are calculated on taxes paid. There is a time lag between collection and reporting of these taxes.

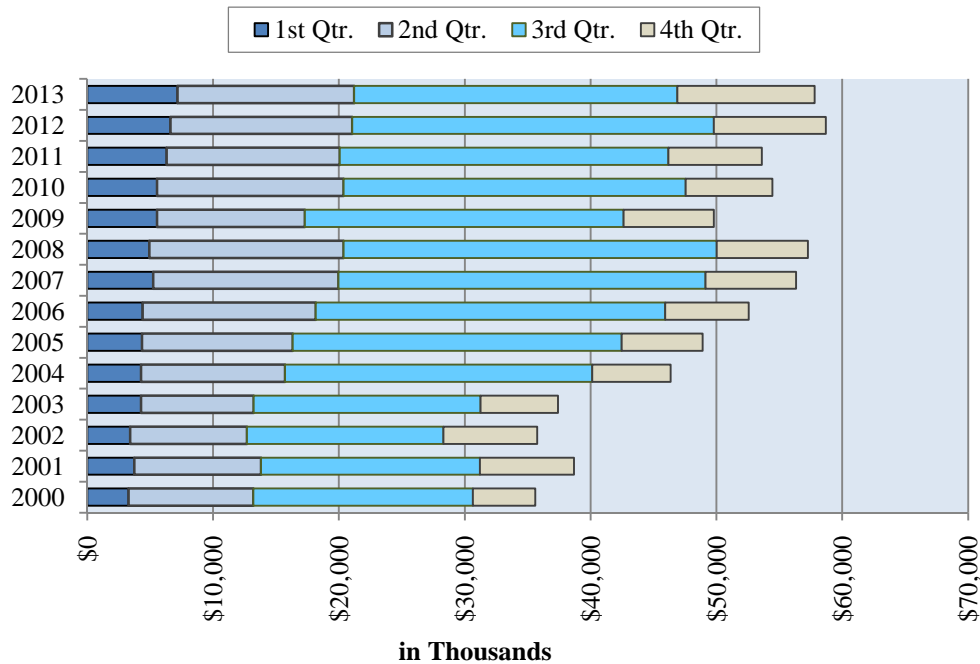
ADDITION/ADJUSTMENT TO TABLE:

City of North Pole began collecting Hotel-Motel Room Tax at (8%) in June 2009. City of North Pole data added to the table above with adjustments beginning second quarter 2009 based on room stay date.

* Due to accrual adjustments the current data will supersede previous figures reported.

QUARTERLY HOTEL/MOTEL ROOM RECEIPTS

Fairbanks North Star Borough
2000-2013



Economic Indicators

ANNUAL HOTEL/MOTEL ROOM RECEIPTS*

Fairbanks North Star Borough
1993-2013

Year	1st Qtr.	2nd Qtr.	3rd Qtr.	4th Qtr.	Annual Total	% Chg fr Prev Yr
1993	\$1,912,664	\$6,509,495	\$13,079,188	\$2,910,413	\$24,411,760	15.6%
1994	\$2,139,404	\$7,282,236	\$14,218,355	\$3,889,047	\$27,529,042	12.8%
1995	\$2,342,331	\$8,112,819	\$14,946,769	\$3,811,319	\$29,213,238	6.1%
1996	\$2,344,161	\$8,651,705	\$15,188,972	\$3,189,160	\$29,373,998	0.6%
1997	\$2,414,719	\$7,794,574	\$18,608,324	\$3,526,383	\$32,344,000	10.1%
1998	\$2,551,863	\$10,173,376	\$17,682,597	\$4,296,950	\$34,704,786	7.3%
1999	\$3,055,908	\$10,093,298	\$18,457,738	\$4,567,227	\$36,174,171	4.2%
2000	\$3,274,010	\$9,923,679	\$17,456,009	\$4,959,298	\$35,612,996	-1.6%
2001	\$3,745,458	\$10,072,118	\$17,394,993	\$7,476,847	\$38,689,416	8.6%
2002	\$3,421,975	\$9,279,386	\$15,610,143	\$7,457,382	\$35,768,886	-7.5%
2003	\$4,269,920	\$8,951,462	\$18,034,906	\$6,161,282	\$37,417,570	4.6%
2004	\$4,282,186	\$11,444,548	\$24,397,446	\$6,245,425	\$46,369,605	23.9%
2005	\$4,341,420	\$11,991,395	\$26,148,408	\$6,416,203	\$48,897,426	5.5%
2006	\$4,396,630	\$13,755,407	\$27,784,543	\$6,628,268	\$52,564,848	7.5%
2007	\$5,253,550	\$14,703,344	\$29,164,266	\$7,198,573	\$56,319,733	7.1%
2008	\$4,928,353	\$15,450,099	\$29,652,248	\$7,251,731	\$57,282,431	1.7%
2009	\$5,554,495	\$11,750,227	\$25,311,523	\$7,176,965	\$49,793,210	-13.1%
2010	\$5,549,520	\$14,817,922	\$27,183,699	\$6,887,983	\$54,439,124	9.3%
2011	\$6,317,082	\$13,757,533	\$26,099,065	\$7,429,594	\$53,603,274	-1.5%
2012	\$6,603,066	\$14,464,988	\$28,737,266	\$8,886,940	\$58,692,260	9.5%
2013	\$7,170,000	\$14,031,111	\$25,686,646	\$10,909,172	\$57,796,929	-1.5%

SOURCE: Fairbanks North Star Borough, City of Fairbanks, and City of North Pole, Finance Departments, personal communications 1993-2013.

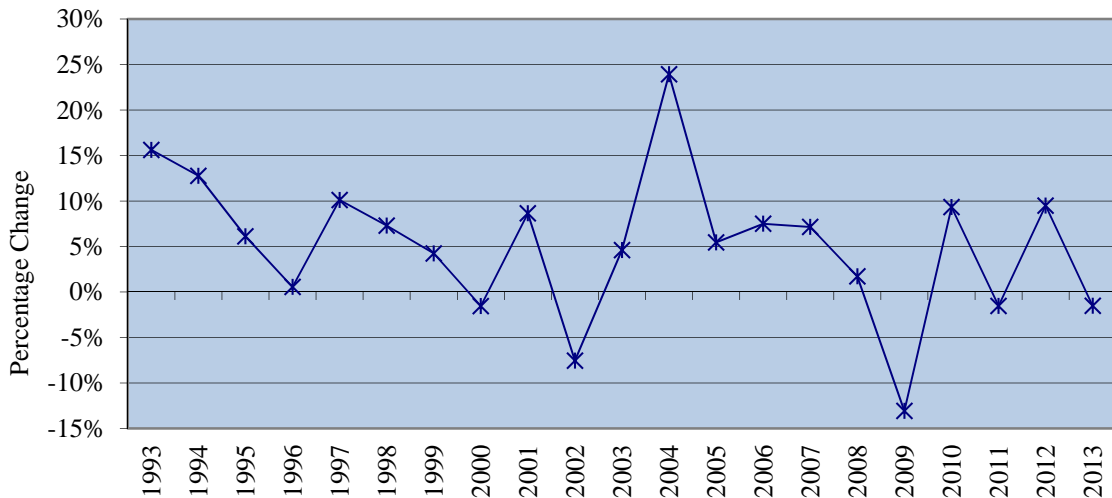
NOTE: Room receipt figures are based on hotel/motel bed tax which is 8%. Receipts are calculated on taxes paid. There is a time lag between collection and reporting of these taxes.

City of North Pole was added beginning second quarter 2009.

* Due to accrual adjustments the current figure supersedes previous figures.

ANNUAL HOTEL/MOTEL ROOM RECEIPTS

Fairbanks North Star Borough
1993-2013



Economic Indicators

UNIVERSITY OF ALASKA MUSEUM VISITORS

Fairbanks, Alaska
2009-2013

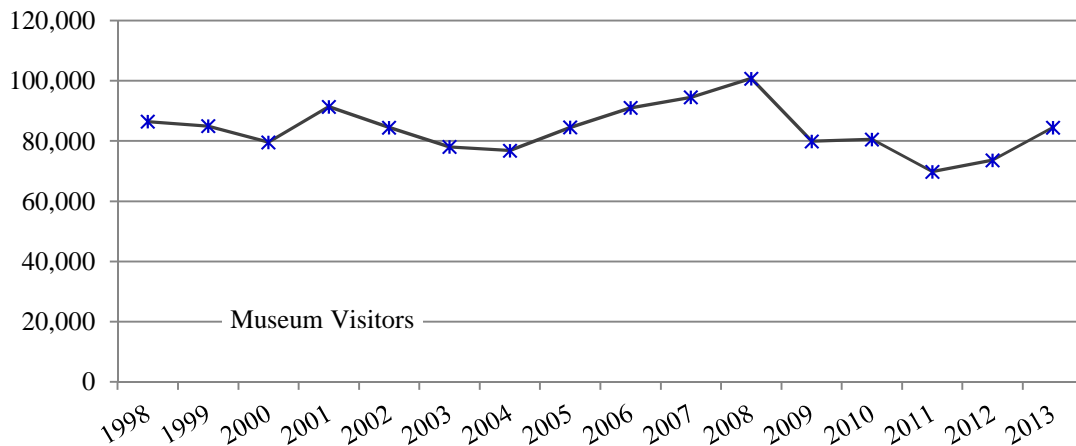
	2009	2010	2011	2012	2013	% Change 2012-13
January	2,236	1,647	1,705	2,235	3,170	42%
February	4,502	4,465	3,199	3,969	3,705	-7%
March	3,394	3,725	4,230	5,934	6,871	16%
April	2,328	2,272	2,525	2,911	2,664	-8%
May	5,767	5,367	4,303	5,100	4,859	-5%
June	15,275	14,051	12,517	11,236	10,956	-2%
July	16,548	16,587	14,169	13,668	14,746	8%
August	14,709	14,193	12,851	12,536	12,993	4%
September	7,567	7,698	6,743	7,137	8,163	14%
October	3,249	4,207	2,841	3,534	6,116	73%
November	1,886	2,567	2,124	1,718	4,206	145%
December	2,437	3,785	2,588	3,662	6,013	64%
Total	79,898	80,564	69,795	73,640	84,462	15%

SOURCE: University of Alaska Museum, University of Alaska, Fairbanks, personal communications 2009-2013.

NOTE: Numbers are preliminary and may be subject to revision. The Fairbanks Children's Museum opened October 2013 in the museums auditorium and will remain there until April 2014.

UNIVERSITY OF ALASKA MUSEUM VISITORS

Fairbanks, Alaska
1998-2013



EMPLOYMENT

CIVILIAN LABOR FORCE UNEMPLOYMENT RATES*

Fairbanks MSA, Alaska and the United States
2007-2013

		2007	2008	2009	2010	2011	2012	2013
F	January	6.3	6.4	7.7	8.6	8.0	7.5	7.1
A	February	6.2	6.3	7.7	8.3	7.7	7.4	6.3
I	March	5.8	6.1	7.5	8.1	7.4	7.2	5.7
R	April	5.4	5.5	6.7	7.1	6.7	6.5	5.5
B	May	4.9	5.5	7.0	6.5	6.3	6.0	5.1
A	June	5.7	6.2	7.6	6.7	6.9	6.6	5.9
N	July	5.0	5.5	6.6	6.1	6.2	6.0	5.2
K	August	4.7	5.3	6.2	6.0	6.1	5.5	4.9
S	September	4.9	5.3	6.6	6.0	6.0	5.2	4.6
	October	4.6	5.5	6.8	6.1	6.0	5.1	5.0
M	November	5.1	5.9	7.0	6.8	6.4	5.6	5.3
S	December	5.7	6.4	7.3	7.0	6.8	6.1	5.4
A	Average	5.3	5.8	7.1	6.9	6.7	6.2	
	January	7.1	7.1	8.0	9.2	8.8	8.1	7.7
	February	7.0	7.1	8.3	9.4	8.7	8.1	7.1
	March	6.7	7.0	8.3	9.2	8.4	7.8	6.6
A	April	6.2	6.4	7.7	8.3	7.7	7.2	6.2
L	May	5.7	6.3	7.5	7.6	7.3	6.9	5.9
A	June	6.1	6.5	8.0	7.8	7.7	7.3	6.5
S	July	5.4	5.8	7.1	7.0	6.9	6.6	5.9
K	August	5.3	5.7	7.0	6.9	6.7	6.2	5.6
A	September	5.5	5.7	7.3	7.1	6.9	6.1	5.5
	October	5.5	5.9	7.6	7.1	6.9	6.1	6.0
	November	5.9	6.4	7.8	7.8	7.3	6.5	6.2
	December	6.5	6.9	8.2	8.1	7.7	7.0	6.5
	Average	6.1	6.4	7.7	8.0	7.6	7.0	
U	January	5.0	5.4	8.5	10.6	9.8	8.8	8.5
N	February	4.9	5.2	8.9	10.4	9.5	8.7	8.1
I	March	4.5	5.2	9.0	10.2	9.2	8.4	7.6
T	April	4.3	4.8	8.6	9.5	8.7	7.7	7.1
E	May	4.3	5.2	9.1	9.3	8.7	7.9	7.3
D	June	4.7	5.7	9.7	9.6	9.3	8.4	7.8
	July	4.9	6.0	9.7	9.7	9.3	8.6	7.7
S	August	4.6	6.1	9.6	9.5	9.1	8.2	7.3
T	September	4.5	6.0	9.5	9.2	8.8	7.6	7.0
A	October	4.4	6.1	9.5	9.0	8.5	7.5	7.0
T	November	4.5	6.5	9.4	9.3	8.2	7.4	6.6
E	December	4.8	7.1	9.7	9.1	8.3	7.6	6.5
S	Average	4.6	5.8	9.3	9.6	8.9	8.1	7.4

SOURCES: Alaska Department of Labor, Research and Analysis Section, website: <http://www.laborstats.alaska.gov>, and personal communications 2007-2013. U.S. Department of Labor, Bureau of Labor Statistics, *Current Population Survey*, and website: <http://www.bls.gov>, 2007-2013.

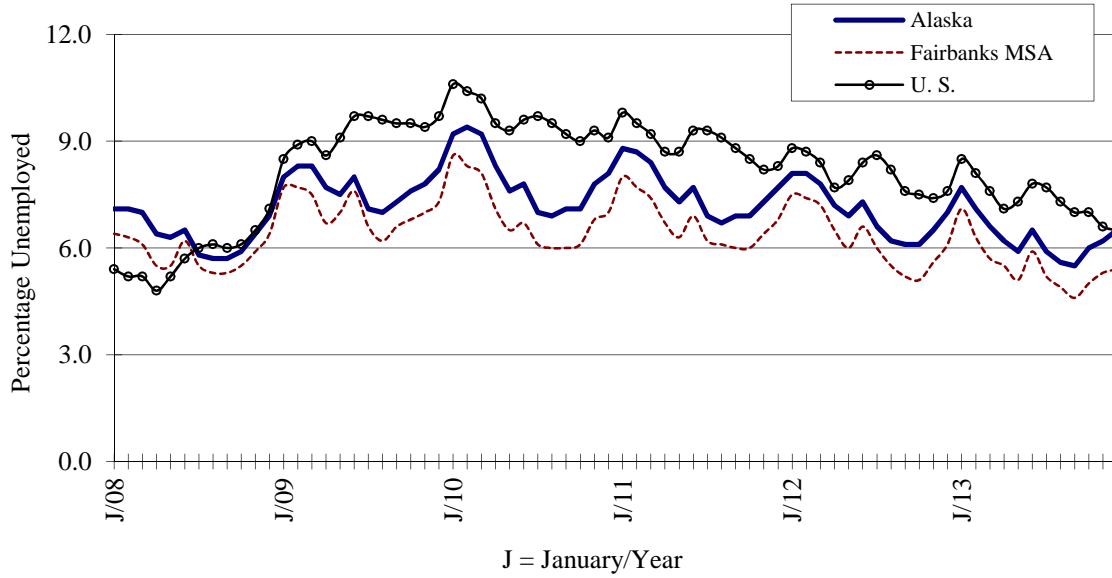
NOTE: Rates presented are "not seasonally adjusted". A change in the way the labor force statistics are calculated for boroughs and census areas makes data prior to 2000 not comparable with later data.

* May be subject to revision.

Employment

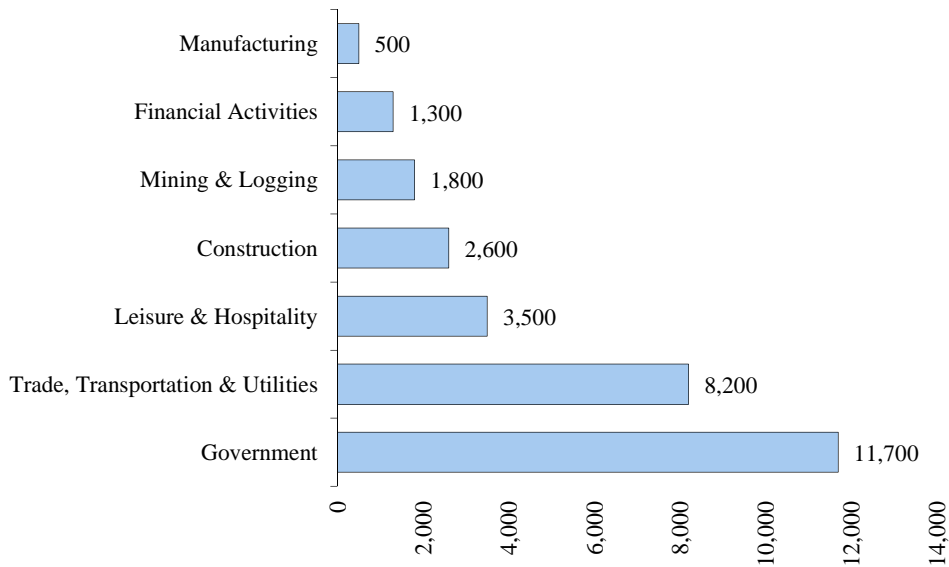
CIVILIAN LABOR FORCE UNEMPLOYMENT RATES

Fairbanks MSA, State of Alaska, the United States
2008-2013



AVERAGE MONTHLY EMPLOYMENT ESTIMATES BY SECTOR

Fairbanks North Star Borough
Fourth Quarter Average - 2013



Employment

AVERAGE MONTHLY EMPLOYMENT ESTIMATES BY INDUSTRY

Fairbanks North Star Borough
2013

Industry	2013				Year-to-Date Average		% Change 2012-13
	1st Qtr	2nd Qtr	3rd Qtr*	4th Qtr	2013	2012	
Reporting Period	1st Qtr	2nd Qtr	3rd Qtr*	4th Qtr	Jan-Dec	Jan-Dec	Jan-Dec
Mining and Logging	1,600	1,700	2,000	1,800	1,800	1,500	20.0%
Construction	2,100	2,700	3,500	2,600	2,700	2,500	8.0%
Manufacturing	500	600	600	500	500	600	-16.7%
Trade, Transportation, Utilities	7,600	8,200	8,500	8,200	8,000	7,700	3.9%
Wholesale Trade	600	700	700	600	700	700	0.0%
Retail Trade	4,700	4,900	5,000	5,100	4,900	4,600	6.5%
Trans/Warehouse/Utilities	2,300	2,600	2,700	2,500	2,500	2,400	4.2%
Information	500	500	500	600	500	500	0.0%
Financial Activities	1,300	1,300	1,300	1,300	1,300	1,500	-13.3%
Professional & Business Svcs	2,500	2,800	2,900	2,500	2,700	2,500	8.0%
Educational & Health Services	5,300	5,400	5,400	5,400	5,400	5,200	3.8%
Health Care	3,900	4,000	4,000	4,000	4,000	3,700	8.1%
Leisure & Hospitality	3,700	4,300	4,600	3,500	4,000	4,100	-2.4%
Other Services	1,200	1,200	1,300	1,200	1,200	1,300	-7.7%
Government	11,600	11,600	11,100	11,700	11,500	11,900	-3.4%
Federal Government	2,800	3,000	2,900	2,700	2,800	3,300	-15.2%
State Government	5,400	5,500	5,300	5,600	5,400	5,400	0.0%
Local Government	3,400	3,100	2,900	3,400	3,200	3,200	0.0%
Total Nonfarm	37,800	40,300	41,600	39,400	39,800	39,300	1.3%

SOURCE: Alaska Department of Labor and Workforce Development, Research and Analysis Section; U.S. Department of Labor, Bureau of Labor Statistics. State website: <http://labor.alaska.gov/research/ces/ces.htm>, 2013.

NOTE: These data exclude self-employed workers, fishers, domestics, and unpaid family workers. Government includes employees of public school systems and the University of Alaska.

-Numbers may not sum due to rounding.

-Beginning January 2001, wage and salary employment estimates were published under a new classification system. The Standard Industrial Classification system (SIC) has been replaced by the North American Industry Classification System (NAICS). Data prior to 2001 are comparable only at the Total Nonfarm and Government levels.

-As of January 2001, certain federally-recognized tribal entities were moved to Local Government, which created a series break for Total Government and Local Government. Please see the April 2002 Alaska Economic Trends publication for a detailed explanation.

* The federal government shutdown delayed the release of 3rd Qtr. 2013 data (shown above).

Employment

ANNUAL AVERAGE MONTHLY EMPLOYMENT BY INDUSTRY

Fairbanks North Star Borough
2009-2012

Industry	2009	2010	2011	2012	% Change 2011-12
Natural Resources & Mining	1,108	1,161	1,330	1,517	14.1%
Agriculture, Forestry, Fishing, Hunting	40	45	48	49	2.1%
Mining	1,068	1,117	1,282	1,468	14.5%
Construction	2,490	2,641	2,596	2,618	0.8%
Construction of Buildings	743	751	771	806	4.5%
Heavy Construction	229	374	404	331	-18.1%
Specialty Trade Contractors	1,519	1,517	1,421	1,482	4.3%
Manufacturing	639	604	575	556	-3.3%
Trade, Transportation & Utilities	7,738	7,642	7,760	7,910	1.9%
Wholesale Trade	656	654	661	705	6.7%
Retail Trade	4,537	4,551	4,659	4,734	1.6%
Food & Beverage	456	471	463	480	3.7%
General Merchandise	1,355	1,341	1,338	1,352	1.0%
Transportation & Warehousing	2,141	2,020	2,016	2,077	3.0%
Air Transportation	606	607	593	595	0.3%
Transit & Ground Passenger	278	299	295	303	2.7%
Information	533	497	549	548	-0.2%
Telecommunication	309	296	293	297	1.4%
Financial Activities	1,558	1,553	1,445	1,427	-1.2%
Finance & Insurance	887	877	799	805	0.8%
Credit Intermediation, etc.	534	517	510	513	0.6%
Real Estate, Renting & Leasing	671	676	647	622	-3.9%
Real Estate	407	428	404	387	-4.2%
Professional & Business Services	2,174	2,368	2,511	2,517	0.2%
Professional, Scientific, Technical Services	1,300	1,515	1,539	1,494	-2.9%
Management of Companies & Enterprises	57	53	120	118	-1.7%
Administrative & Waste Services	817	800	852	905	6.2%
Educational & Health Services	4,541	4,910	4,951	5,155	4.1%
Health Care & Social Assistance	4,384	4,675	4,720	4,910	4.0%
Leisure & Hospitality	4,001	4,084	4,129	4,189	1.5%
Accommodation	927	969	1,029	1,074	4.4%
Food Services & Drinking Places	2,591	2,671	2,691	2,672	-0.7%
Other Services	1,251	1,116	1,132	1,183	4.5%
Membership Organizations, etc.	610	510	509	500	-1.8%
Repair & Maintenance	434	403	403	421	4.5%
Government	11,816	12,072	12,010	11,677	-2.8%
Federal Government	3,469	3,495	3,434	3,264	-5.0%
State Government	5,289	5,487	5,461	5,445	-0.3%
Local Government	3,058	3,090	3,115	2,968	-4.7%
Unclassified Establishments	7	39	29	27	-6.9%
Total Industries	37,855	38,688	39,018	39,323	0.8%

SOURCE: Alaska Department of Labor and Workforce Development, Research and Analysis Section; *Quarterly Census of Employment & Wages-Annual Review 2012*, (data are preliminary and subject to revision).

NOTE: Blanks in the Total Earnings and Average Monthly Earnings columns due to confidentiality; data are suppressed.

Employment

ANNUAL AVERAGE MONTHLY WAGE BY INDUSTRY

Fairbanks North Star Borough
2009-2012

Industry	2009	2010	2011	2012	% Change 2011-12
Natural Resources & Mining	\$7,414	\$7,348	\$7,311	\$7,559	3.4%
Agriculture, Forestry, Fishing, Hunting	\$1,793	\$1,711	\$1,506	\$1,513	0.5%
Mining	\$7,624	\$7,574	\$7,530	\$7,761	3.1%
Construction	\$5,656	\$5,922	\$5,881	\$6,146	4.5%
Construction of Buildings	\$5,524	\$5,382	\$5,406	\$5,222	-3.4%
Heavy Construction	\$6,896	\$6,217	\$6,809	\$7,863	15.5%
Specialty Trade Contractors	\$5,534	\$6,117	\$5,874	\$6,261	6.6%
Manufacturing	\$4,370	\$4,416	\$4,618	\$4,664	1.0%
Trade, Transportation & Utilities	\$3,390	\$3,240	\$3,274	\$3,307	1.0%
Wholesale Trade	\$4,037	\$4,035	\$4,223	\$4,345	2.9%
Retail Trade	\$2,501	\$2,549	\$2,563	\$2,603	1.6%
Food & Beverage	\$2,343	\$2,358	\$2,417	\$2,402	-0.6%
General Merchandise	\$2,302	\$2,342	\$2,340	\$2,328	-0.5%
Transportation & Warehousing	\$4,523	\$3,849	\$3,858	\$3,808	-1.3%
Air Transportation	\$3,674	\$3,693	\$3,552	\$3,389	-4.6%
Transit & Ground Passenger	\$2,366	\$2,272	\$2,307	\$2,419	4.9%
Information	\$4,251	\$4,258	\$4,123	\$4,096	-0.7%
Telecommunication	\$5,058	\$5,026	\$5,407	\$5,262	-2.7%
Financial Activities	\$3,745	\$3,878	\$3,847	\$3,907	1.6%
Finance & Insurance	\$4,006	\$4,238	\$4,086	\$4,166	2.0%
Credit Intermediation, etc.	\$3,720	\$3,914	\$3,997	\$4,113	2.9%
Real Estate, Renting & Leasing	\$3,399	\$3,410	\$3,552	\$3,572	0.6%
Real Estate	\$3,213	\$3,236	\$3,269	\$3,343	2.3%
Professional & Business Services	\$3,719	\$3,848	\$3,891	\$4,137	6.3%
Professional, Scientific, Technical Services	\$4,107	\$4,229	\$4,199	\$4,443	5.8%
Management of Companies & Enterprises	\$5,564	\$5,871	\$6,321	\$7,241	14.6%
Administrative & Waste Services	\$2,971	\$2,996	\$2,990	\$3,227	7.9%
Educational & Health Services	\$3,465	\$3,472	\$3,642	\$3,684	1.2%
Health Care & Social Assistance	\$3,499	\$3,512	\$3,691	\$3,737	1.2%
Leisure & Hospitality	\$1,487	\$1,487	\$1,531	\$1,550	1.2%
Accommodation	\$2,349	\$2,183	\$2,189	\$2,159	-1.4%
Food Services & Drinking Places	\$1,240	\$1,278	\$1,303	\$1,327	1.8%
Other Services	\$2,363	\$2,369	\$2,483	\$2,394	-3.6%
Membership Organizations, etc.	\$1,977	\$1,852	\$1,949	\$1,916	-1.7%
Repair & Maintenance	\$3,275	\$3,389	\$3,625	\$3,497	-3.5%
Government	\$4,176	\$4,297	\$4,423	\$4,549	2.8%
Federal Government	\$4,946	\$5,220	\$5,469	\$5,585	2.1%
State Government	\$3,980	\$4,004	\$4,077	\$4,172	2.3%
Local Government	\$3,641	\$3,774	\$3,877	\$4,101	5.8%
Unclassified Establishments	\$3,291	\$2,081	\$1,641	\$1,451	-11.6%
Total Industries	\$3,738	\$3,789	\$3,870	\$3,968	2.5%

SOURCE: Alaska Department of Labor and Workforce Development, Research and Analysis Section; *Quarterly Census of Employment & Wages - Annual Review 2012*, (data are preliminary and subject to revision).

NOTE: Blanks in the Total Earnings and Average Monthly Earnings columns due to confidentiality; data are suppressed.

Employment

QUARTERLY CENSUS OF EMPLOYMENT AND WAGES BY INDUSTRY*

Fairbanks North Star Borough

By Quarter

Industry	--1Q 2013 Avg Mo--		--2Q 2013 Avg Mo--		% Chg from prev Qtr	
	Employment	Wage	Employment	Wage	Employment	Wage
Natural Resources & Mining	1,312	\$7,116	1,525	\$7,423	16.2%	4.3%
Agriculture, Forestry, Fishing, Hunting	27	\$1,241	92	\$1,428	240.7%	15.1%
Mining	1,285	\$7,240	1,433	\$7,808	11.5%	7.8%
Construction	1,777	\$5,250	2,351	\$5,806	32.3%	10.6%
Construction of Buildings	509	\$4,876	645	\$4,914	26.7%	0.8%
Heavy Construction	237	\$6,809	375	\$7,060	58.2%	3.7%
Specialty Trade Contractors	1,031	\$5,077	1,331	\$5,885	29.1%	15.9%
Manufacturing	545	\$4,403	604	\$4,777	10.8%	8.5%
Trade, Transportation & Utilities	7,413	\$3,378	7,858	\$3,319	6.0%	-1.7%
Wholesale Trade	713	\$4,592	732	\$4,413	2.7%	-3.9%
Retail Trade	4,492	\$2,619	4,657	\$2,549	3.7%	-2.7%
Food & Beverage	427	\$2,392	459	\$2,240	7.5%	-6.4%
General Merchandise	1,287	\$2,432	1,277	\$2,277	-0.8%	-6.4%
Transportation & Warehousing	1,834	\$4,037	2,062	\$3,902	12.4%	-3.3%
Air Transportation	524	\$4,139	554	\$3,874	5.7%	-6.4%
Transit & Ground Passenger	327	\$2,142	278	\$2,824	-15.0%	31.8%
Information	474	\$4,654	480	\$4,442	1.3%	-4.6%
Telecommunication	246	\$6,490	246	\$6,122	0.0%	-5.7%
Financial Activities	1,386	\$4,066	1,421	\$3,883	2.5%	-4.5%
Finance & Insurance	773	\$4,505	783	\$4,065	1.3%	-9.8%
Credit Intermediation, etc.	504	\$4,499	511	\$3,771	1.4%	-16.2%
Real Estate, Renting & Leasing	613	\$3,514	638	\$3,659	4.1%	4.1%
Real Estate	400	\$3,298	406	\$3,450	1.5%	4.6%
Professional & Business Services	2,298	\$4,100	2,372	\$4,066	3.2%	-0.8%
Professional, Scientific, Technical Services	1,418	\$4,348	1,420	\$4,409	0.1%	1.4%
Management of Companies & Enterprises	119	\$6,786	119	\$6,859	0.0%	1.1%
Administrative & Waste Services	760	\$3,222	833	\$3,081	9.6%	-4.4%
Educational & Health Services	5,213	\$3,522	5,267	\$3,808	1.0%	8.1%
Health Care & Social Assistance	4,994	\$3,583	5,039	\$3,882	0.9%	8.3%
Leisure & Hospitality	3,727	\$1,513	4,349	\$1,576	16.7%	4.2%
Accommodation	798	\$2,235	1,185	\$2,175	48.5%	-2.7%
Food Services & Drinking Places	2,526	\$1,304	2,713	\$1,341	7.4%	2.8%
Other Services	1,151	\$2,315	1,168	\$2,410	1.5%	4.1%
Repair & Maintenance	417	\$3,327	429	\$3,453	2.9%	3.8%
Membership Organizations, etc.	481	\$1,871	493	\$1,931	2.5%	3.2%
Government	11,970	\$4,241	11,505	\$4,755	-3.9%	12.1%
Federal Government	3,081	\$5,274	3,130	\$5,763	1.6%	9.3%
State Government	5,387	\$3,868	5,458	\$4,039	1.3%	4.4%
Local Government	3,502	\$3,908	2,917	\$5,012	-16.7%	28.2%
Unclassified Establishments	46	\$1,680	65	\$1,629	41.3%	-3.0%
Total Industries	37,312	\$3,776	38,966	\$3,997	4.4%	5.9%

SOURCE: Alaska Department of Labor and Workforce Development, Research and Analysis Section; *Quarterly Census of Employment & Wages (QCEW)*, State of Alaska website <http://labor.alaska.gov/research/qcew/qcew.htm>.

* All numbers are preliminary and subject to revision. Blanks in the Employment, Total Earnings and Average Monthly Earnings columns due to confidentiality; data are suppressed. There is an approximate 6 month lag in data release.

HOUSING

APARTMENT / MULTI-PLEX VACANCY RATES ^

Fairbanks North Star Borough
2009-2013

	2009	2010	2011	2012	2013
	-----Percent Vacant-----				
March ^	18.5	6.9	8.8	8.7	9.5
June	11.1	7.6	10.2	2.1	8.3
September	5.3	8.9	13.3	6.1	12.7
December	6.6	10.1	15.5	9.6	14.7

SOURCE: FNSB Community Research Center Rental Survey, 2009-2013.

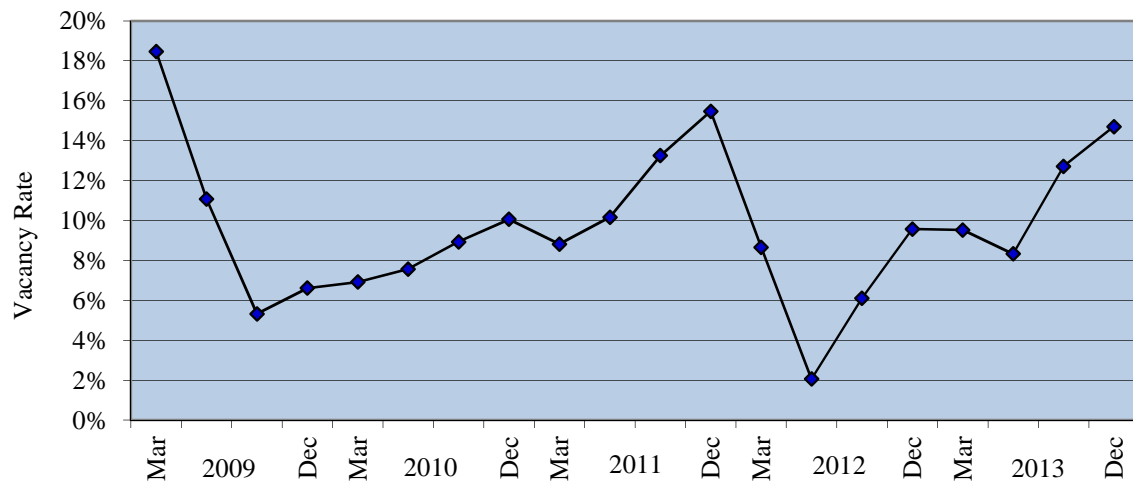
NOTE: Vacancy rates are based on a sample of 3,000 to 4,000 rental units and include data for apartments, duplexes, tri-plexes and larger multi-plex rental properties. They do not include single-family houses, mobile homes or cabins. Changes in seasonal apartment availability may also factor into the Fall and Winter figures.

Vacancy influences: The Ft. Wainwright Army 172nd Stryker Brigade was deployed to Iraq in Fall-Winter 2008-09, Spring-Summer 2011-12, and the Military Police in Fall-Winter 2013-2014. Ft. Wainwright base housing privatized and contracted management to New Haven Communities in May 2009 with additional new construction through 2013. Weeks Field Estates has replaced Fairview Manor with 130 affordable housing units in 2009-2011. Walden Estates, once off-base military housing, privatized and placed 150 units; 3-5 bdrms., on the market for sale or rent (27:duplexes; 23:4-plexes; 4:houses) in June 2010 (PHII). The Ft. Wainwright Army 1st Battalion, 52nd Aviation Regiment deploy March 2014.

^ Correction made to March 2011 data on June 24, 2011.

APARTMENT / MULTI-PLEX VACANCY RATES

Fairbanks North Star Borough
2009-2013



Housing

RENTAL HOUSING UNITS AVAILABLE ^

Fairbanks North Star Borough
2010-2013

	----- Apartments -----				----- Houses -----				Mobile Homes	Cabins	Total Rentals
	Eff.	1-BR	2-BR	3+BR	1-BR	2-BR	3-BR	4+BR			
2010											
March	38	95	93	74	5	5	16	6	NA	16	348
June	34	64	107	108	2	5	8	6	2	10	346
September	70	121	112	103	1	16	36	15	6	21	501
December	51	173	143	80	5	15	18	12	2	23	522
2011											
March ^	41	146	120	66	5	11	8	15	1	12	425
June	40	170	180	116	4	16	45	7	3	30	611
September	84	199	239	100	9	25	45	12	3	35	751
December	64	242	214	134	9	17	19	22	3	26	750
2012											
March	30	159	121	41	1	4	15	9	4	21	405
June	10	35	57	18	0	8	9	5	3	29	174
September	29	65	103	114	3	9	38	16	1	28	406
December	24	114	128	141	1	4	12	13	NA	22	459
2013											
March	20	114	124	147	2	7	18	10	2	11	455
June	22	72	128	119	4	9	19	11	2	18	404
September	30	100	166	163	5	23	48	23	3	32	593
December	23	182	236	118	8	19	80	17	7	32	722
% Change											
2012-13	-4%	60%	84%	-16%	700%	375%	567%	31%	NA	45%	57%
Dec.											

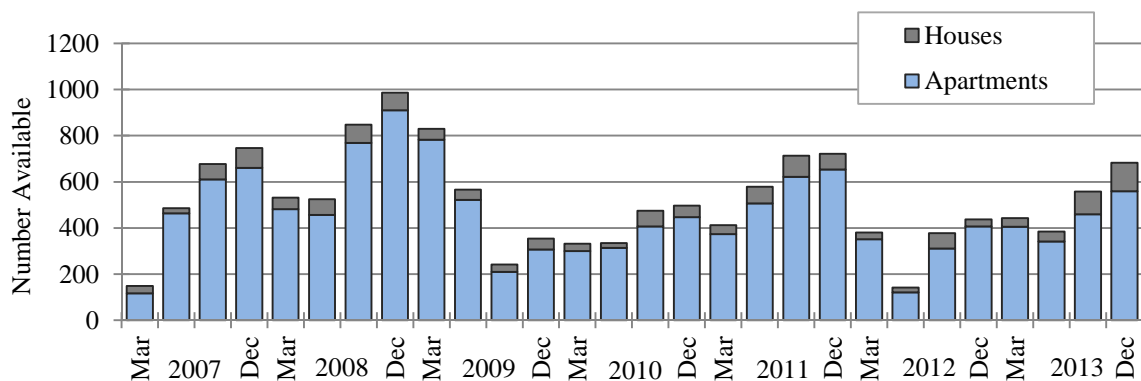
SOURCE: Community Research Center rental surveys, 2010-2013, including most major apartment complexes, *Fairbanks Daily News-Miner* advertisements, and <http://www.craigslist.com> during the week surrounding the 19th of March, June, September and March.

NOTE: Aging Fairview Manor demolished the last units in the fall 2011. Weeks Field Estates has replaced them with 130 affordable housing Units in 2009-2011. Walden Estates, once off-base military housing, privatized and placed 150 units; 3-5 bdrms. on the market for sale or rent (27:duplexes; 23:4-plexes; 4:houses) in June 2010 (PHII). By September 2010 all units were under contract with none available for rent. B&B's come off survey in May & back on in September. See *Vacancy Rates* footer for military deployments. NA represents not available.

^ Correction made to March 2011 data on June 24, 2011.

RENTAL HOUSING UNITS AVAILABLE

Fairbanks North Star Borough
2007-2013



Housing

AVERAGE MONTHLY RENTS FOR AVAILABLE HOUSING UNITS ^

Fairbanks North Star Borough
2010-2013

	----- Apartments -----				----- Houses -----				Mobile Homes	Cabins
	Eff.	1-BR	2-BR	3+ BR	1-BR	2-BR	3-BR	4+ BR		
2010										
March	\$617	\$817	\$1,028	\$1,763	\$960	\$1,489	\$1,516	\$2,073	NA	\$562
June	\$685	\$874	\$1,063	\$1,837	\$1,125	\$1,310	\$1,606	\$1,903	\$1,300	\$535
September	\$842	\$901	\$1,124	\$1,613	\$950	\$1,288	\$1,649	\$2,101	\$795	\$589
December	\$737	\$901	\$1,102	\$1,583	\$840	\$1,319	\$1,588	\$2,098	\$925	\$608
2011										
March ^	\$644	\$904	\$1,143	\$1,571	\$990	\$1,350	\$1,481	\$2,245	\$850	\$570
June	\$723	\$901	\$1,136	\$1,642	\$1,137	\$1,318	\$1,632	\$2,187	\$800	\$628
September	\$833	\$906	\$1,073	\$1,629	\$969	\$1,248	\$1,647	\$2,233	\$750	\$657
December	\$770	\$897	\$1,100	\$1,693	\$863	\$1,141	\$1,728	\$2,217	\$866	\$599
2012										
March	\$722	\$926	\$1,163	\$1,454	\$850	\$1,100	\$1,586	\$2,104	\$725	\$557
June	\$600	\$885	\$1,133	\$1,462	NA	\$1,268	\$1,664	\$1,720	\$881	\$595
September	\$951	\$908	\$1,185	\$1,901	\$950	\$1,433	\$1,775	\$2,140	\$1,000	\$661
December	\$905	\$927	\$1,155	\$1,861	\$900	\$1,381	\$1,650	\$2,107	NA	\$571
2013										
March	\$656	\$920	\$1,190	\$1,720	\$912	\$1,185	\$1,787	\$2,215	\$1,200	\$570
June	\$645	\$920	\$1,181	\$1,797	\$981	\$1,369	\$1,664	\$2,437	\$625	\$520
September	\$959	\$919	\$1,215	\$1,698	\$1,035	\$1,390	\$1,661	\$2,185	\$858	\$635
December	\$768	\$1,047	\$1,234	\$1,698	\$1,011	\$1,243	\$1,820	\$1,951	\$900	\$615
% Change										
2012-13	-15%	13%	7%	-9%	12%	-10%	10%	-7%	NA	8%
Dec.										

SOURCE: Community Research Center rental surveys, 2010-2013, including most major apartment complexes, *Fairbanks Daily News-Miner* advertisements, and <http://www.craigslist.com> during the week surrounding the 19th of March, June, September and December.

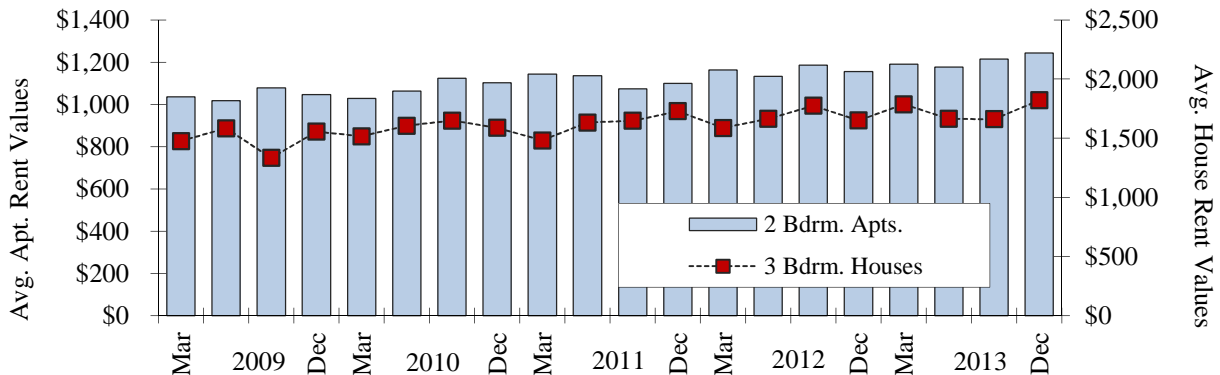
NOTE: Aging Fairview Manor demolished the last units in the fall 2011. Weeks Field Estates has replaced them with 130 affordable housing units in 2009-2011. Walden Estates, once off-base military housing, privatized and placed 150 units; 3-5 bd rms. on the market for sale or rent (27:duplexes; 23:4-plexes; 4:houses) in June 2010 (PHI). By September 2010 all units were under contract with none available for rent. B&B's come off in May & back on in September. See *Vacancy Rates* footer for military deployments.

NA Not available

^ Correction made to March 2011 data on June 24, 2011.

AVERAGE MONTHLY RENTS FOR AVAILABLE HOUSING UNITS

Fairbanks North Star Borough
2009-2013



Housing

RESIDENTIAL HOUSING SALES*

Fairbanks North Star Borough
2011-2013**

Quarter	1 Bedroom		2 Bedroom		3 Bedroom		4 Bedroom		5+ Bedroom		Total # Sold	Avg.Price
	#	Price	#	Price	#	Price	#	Price	#	Price		
2011												
1st Qtr.	5	\$107,300	30	\$161,399	89	\$232,332	35	\$270,897	6	\$293,258	165	\$226,042
2nd Qtr.	10	\$120,650	31	\$174,480	110	\$216,306	47	\$264,488	13	\$257,780	211	\$218,915
3rd Qtr.	7	\$102,785	30	\$166,077	93	\$212,814	35	\$271,040	9	\$272,744	174	\$215,141
4th Qtr.	4	\$86,125	13	\$151,984	40	\$216,743	25	\$260,240	7	\$316,785	89	\$221,500
2011 Total	26	\$107,961	104	\$165,471	332	\$219,677	142	\$266,935	35	\$279,511	639	\$220,088
2012												
1st Qtr.	8	\$107,000	23	\$156,582	81	\$220,186	25	\$293,744	7	\$307,957	144	\$220,776
2nd Qtr.	11	\$108,668	26	\$162,511	95	\$233,418	30	\$276,064	2	\$192,500	164	\$221,111
3rd Qtr.	15	\$125,533	41	\$156,251	110	\$231,445	52	\$271,592	9	\$261,110	227	\$221,238
4th Qtr.	10	\$86,600	18	\$152,544	57	\$221,887	19	\$234,584	6	\$285,133	110	\$203,884
2012 Total	44	\$109,099	108	\$157,211	343	\$227,744	126	\$271,471	24	\$275,062	645	\$218,143
2013												
1st Qtr.	12	\$116,741	22	\$179,311	88	\$222,038	30	\$277,129	6	\$286,066	158	\$220,983
2nd Qtr.	9	\$81,666	26	\$167,436	93	\$229,575	34	\$301,022	9	\$252,544	171	\$227,757
3rd Qtr.	14	\$118,369	45	\$152,495	145	\$231,950	51	\$299,159	17	\$297,294	272	\$229,644
4th Qtr.	9	\$114,611	22	\$137,713	73	\$201,386	23	\$270,673	10	\$248,432	137	\$200,527
2013 Total	44	\$109,649	115	\$158,175	399	\$223,618	138	\$290,081	42	\$274,467	738	\$221,947
% Chg. 4th Qtr. 2012-13	-10%	32%	22%	-10%	28%	-9%	21%	15%	67%	-13%	25%	-2%
% Chg. ANNUAL 2012-13	0%	1%	6%	1%	16%	-2%	10%	7%	75%	0%	14%	2%

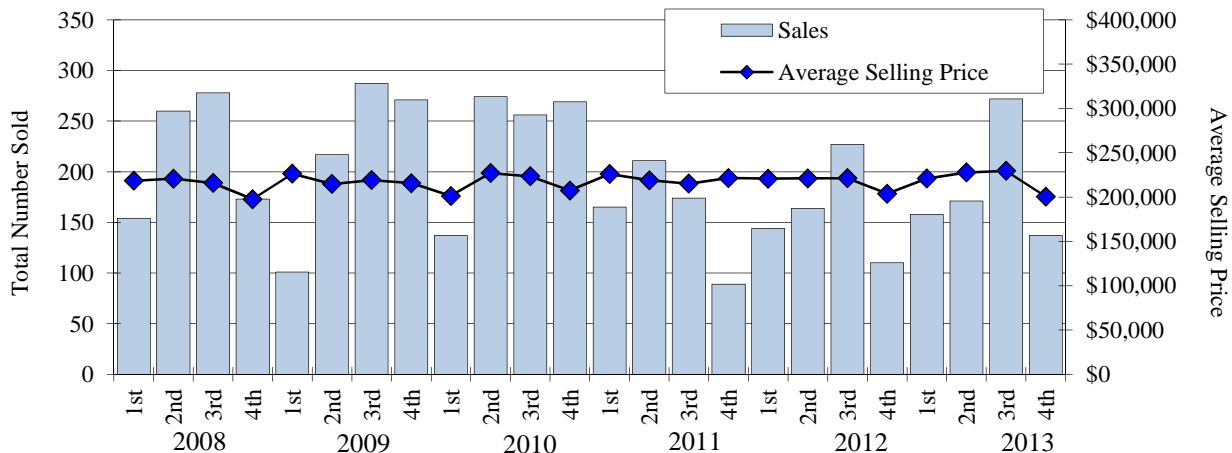
SOURCE: Greater Fairbanks Board of Realtors and Alaska/Multiple Listing Service, Inc., personal and computer printout communications 2011-2013. Fairbanks Area MLS District data maintained by the Board or its MLS may not reflect all real estate activity in the market, and neither the Board nor its MLS guarantees or is in any way responsible for accuracy of the data.

* Does not include houses without bedrooms or sales of housing with zero lot lines.

** The Year-End Total number of sales includes the calculated average price of sales.

RESIDENTIAL HOUSING SALES

Fairbanks North Star Borough
2008-2013, Quarterly Data



Housing

ANNUAL AVERAGE RESIDENTIAL HOUSING SALES*

Fairbanks North Star Borough
2000-2013

Year	1 Bedroom		2 Bedroom		3 Bedroom		4 Bedroom		5+ Bedroom		Total # Sold	Avg. Selling Price	% Chg fr prev yr	
	#	Price	#	Price	#	Price	#	Price	#	Price			Total # Sold	Avg. Price
2000	59	\$53,824	180	\$92,473	396	\$140,714	140	\$173,130	41	\$187,028	816	\$131,679	11.3%	2.7%
2001	61	\$63,591	233	\$94,299	432	\$150,035	162	\$176,423	47	\$188,765	935	\$137,025	14.6%	4.1%
2002	43	\$68,595	175	\$100,499	295	\$158,241	130	\$213,208	50	\$201,706	693	\$151,545	-25.9%	10.6%
2003	59	\$74,127	204	\$107,667	410	\$170,379	173	\$204,159	47	\$237,134	893	\$159,751	28.9%	5.4%
2004	65	\$93,531	164	\$120,336	441	\$178,733	147	\$214,663	39	\$240,959	856	\$170,080	-4.1%	6.5%
2005	55	\$95,452	160	\$135,749	439	\$207,847	163	\$244,873	38	\$266,373	855	\$196,785	-0.1%	15.7%
2006	64	\$107,793	158	\$148,952	554	\$220,860	194	\$262,791	46	\$288,256	1016	\$213,613	18.8%	8.6%
2007	58	\$107,211	176	\$170,842	541	\$228,359	194	\$271,421	41	\$288,301	1010	\$222,084	-0.6%	4.0%
2008	59	\$107,872	135	\$155,583	493	\$218,826	159	\$277,801	19	\$306,389	865	\$214,151	-14.4%	-3.6%
2009	46	\$109,055	154	\$161,362	465	\$224,245	171	\$264,285	40	\$287,474	876	\$217,845	1.3%	1.7%
2010	59	\$115,540	139	\$147,941	493	\$223,043	198	\$266,623	47	\$269,378	936	\$216,659	6.8%	-0.5%
2011	26	\$109,868	104	\$165,225	332	\$222,347	142	\$265,592	35	\$281,853	639	\$221,939	-31.7%	2.4%
2012	44	\$109,099	108	\$157,211	343	\$227,744	126	\$271,471	24	\$275,062	645	\$218,143	0.9%	-1.7%
2013	44	\$109,647	115	\$158,175	399	\$223,618	138	\$290,081	42	\$274,467	738	\$221,947	14.4%	1.7%
Annual Average 2000-13	53	\$94,657	158	\$136,880	431	\$199,642	160	\$242,609	40	\$256,653	841	\$192,375		

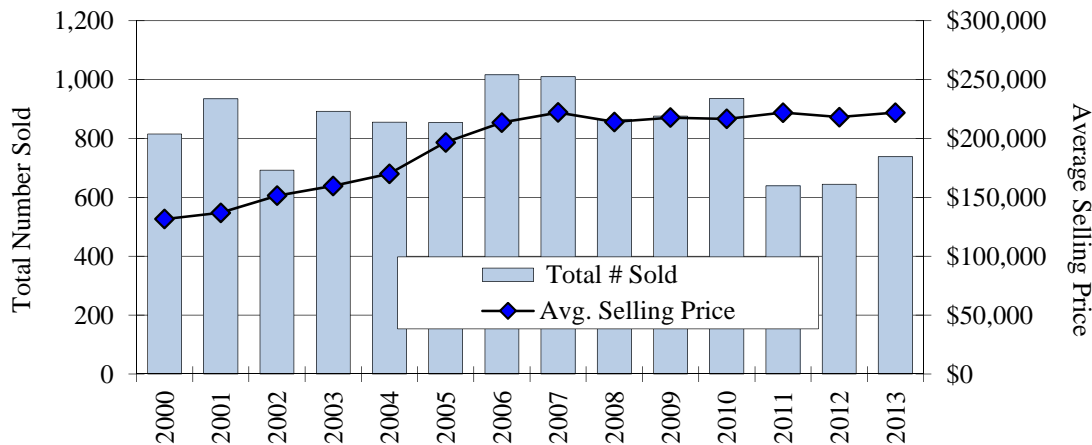
SOURCE: Greater Fairbanks Board of Realtors and Alaska/Multiple Listing Service, Inc., personal and computer printout communications 2000-2013. Fairbanks Area MLS District data maintained by the Board or its MLS may not reflect all real estate activity in the market, and neither the Board nor its MLS guarantees or is in any way responsible for accuracy of the data.

* Does not include houses without bedrooms or housing with zero lot lines.

** The Year-End Total number of sales includes the calculated average price of sales.

ANNUAL RESIDENTIAL HOUSING SALES*

Fairbanks North Star Borough
2000-2013



Housing

NEW STRUCTURES BY UNIT ANNUAL REPORT*

Fairbanks North Star Borough
2003-2013*

Year Built	City of Fairbanks				City of North Pole			
	SFR	Cabin	Multi Family	Fairbanks Total	SFR	Cabin	Multi Family	North Pole Total
2003	66		14	80	10			10
2004	61		4	65	36		14	50
2005	67		14	81	42			42
2006	69		14	83	37		2	39
2007	62		181	243	29		8	37
2008	13		141	154	11			11
2009	11		326	337	2			2
2010	16	1	78	95	9		2	11
2011	16		34	50	3		2	5
2012	11		26	37	5			5
2013*	14		24	38	1			1
Total 2003-2013	406	1	856	1,263	185	0	28	213
Average 2003-2013	36.9	1.0	77.8	114.8	16.8	-	5.6	19.4

Year Built	Balance of Borough				NEW CONSTRUCTION (All)			
	SFR	Cabin	Multi Family	FNSB Balance Total	SFR	Cabin	Multi Family	New Construction Total
2003	536	113	54	703	612	113	68	793
2004	662	92	100	854	759	92	118	969
2005	630	105	81	816	739	105	95	939
2006	585	115	84	784	691	115	100	906
2007	553	96	55	704	644	96	244	984
2008	270	83	15	368	294	83	156	533
2009	273	95	28	396	286	95	354	735
2010	267	81	68	416	292	82	148	522
2011	250	97	326	673	269	97	362	728
2012	197	121	11	329	213	121	37	371
2013*	153	69	27	249	168	69	51	288
Total 2003-2013	4,376	1,067	849	6,292	4,967	1,068	1,733	7,768
Average 2003-2013	397.8	97.0	77.2	572.0	451.5	97.1	157.5	706.2

SOURCE: Fairbanks North Star Borough Assessing Department, personal communications, 2006-2013.

NOTE: Assessing figures are collected and updated daily but stabilize one quarter after calendar year close and prior to May certification date. The term Multi-family is indicative of structures having more than one residential unit, such as a duplex, triplex, 4-plex, etc. Structures with Mother-in-law apartments are not usually regarded as multi-family. Single Family Residential (SFR) abbreviated above. SFR includes condominiums, and townhouses. In some instances, cabins and mobile homes are viewed as SFR (however, cabins are not necessarily year-round residential units, and mobile homes are not always located on a lot with a foundation). The mobile home classification is typically considered transient stock (because they can easily be relocated). The *by Structure* count was replaced with a "*by unit*" count beginning February, 2010.

* Current data supersedes previous figures reported and current year is YTD (year to date) data.

COST OF LIVING

C2ER COST OF LIVING INDEX*

For Selected Cities
2013 Annual Average Data

City	Composite Index 100%	Grocery		Utilities	Trans- portation	Health Care	Misc. Goods & Services
		Items 13.48%	Housing 26.05%				
West:							
Fairbanks, AK	134.5	120.5	132.0	225.9	113.8	151.2	120.1
Anchorage, AK	126.2	113.0	155.1	99.0	107.3	139.2	122.3
Kodiak, AK	132.5	129.6	131.6	166.7	131.0	140.9	123.4
Juneau, AK	132.2	119.0	160.8	158.4	112.9	153.0	111.5
Phoenix, AZ	96.0	93.6	96.9	97.6	95.8	96.0	95.7
San Diego, CA	130.0	101.9	200.3	97.7	113.6	109.9	104.9
Denver, CO	104.2	93.7	116.3	101.3	95.0	103.9	103.4
Boise, ID	93.5	85.9	87.3	87.9	104.0	104.0	97.7
Kalispell, MT	96.0	95.5	88.6	92.7	95.5	109.8	101.1
Carlsbad, NM	91.6	88.6	91.7	88.0	100.2	97.0	89.8
Seattle, WA	119.1	102.9	141.1	97.0	118.6	119.1	115.1
Pierre, SD	101.7	96.2	120.5	89.3	93.5	92.1	97.4
South:							
Miami, FL	107.6	100.2	118.8	95.7	110.7	104.6	104.7
Atlanta, GA	95.3	91.4	87.7	92.1	102.3	102.7	100.0
Lafayette, LA	96.3	90.7	102.2	87.9	104.3	84.9	95.0
Springfield, MO	88.6	90.1	75.1	92.6	92.7	100.8	93.9
Tulsa, OK	88.3	85.7	65.5	96.5	96.6	95.7	100.6
Memphis, TN	85.4	88.2	73.2	86.4	89.1	92.4	91.0
Dallas, TX	95.9	92.6	76.0	106.9	102.5	99.3	106.7
North Central:							
Indianapolis, IN	92.0	85.8	81.5	91.3	99.7	115.9	96.5
Grand Rapids, MI	93.1	84.6	78.2	99.4	106.9	92.0	101.3
Madison, WI	105.6	90.8	111.2	104.2	106.4	124.1	104.6
Northeast:							
New York, NY	220.4	135.9	451.4	133.8	126.7	106.2	151.6
Philadelphia, PA	121.3	113.1	142.9	128.2	105.4	100.2	114.8
Boston, MA	139.7	125.8	176.5	144.4	104.4	126.3	130.2
Raleigh, NC	93.6	102.0	76.7	105.8	98.1	101.9	96.9
Richmond, VA	101.7	98.5	90.1	107.6	99.9	106.7	110.5
Avg. of 308 Urban Areas	100.0	100.0	100.0	100.0	100.0	100.0	100.0

SOURCE: Council for Community and Economic Research (C2ER), *Cost of Living Index, Comparative Data for Urban Areas*, 2013 Annual Average Data, January 2014.

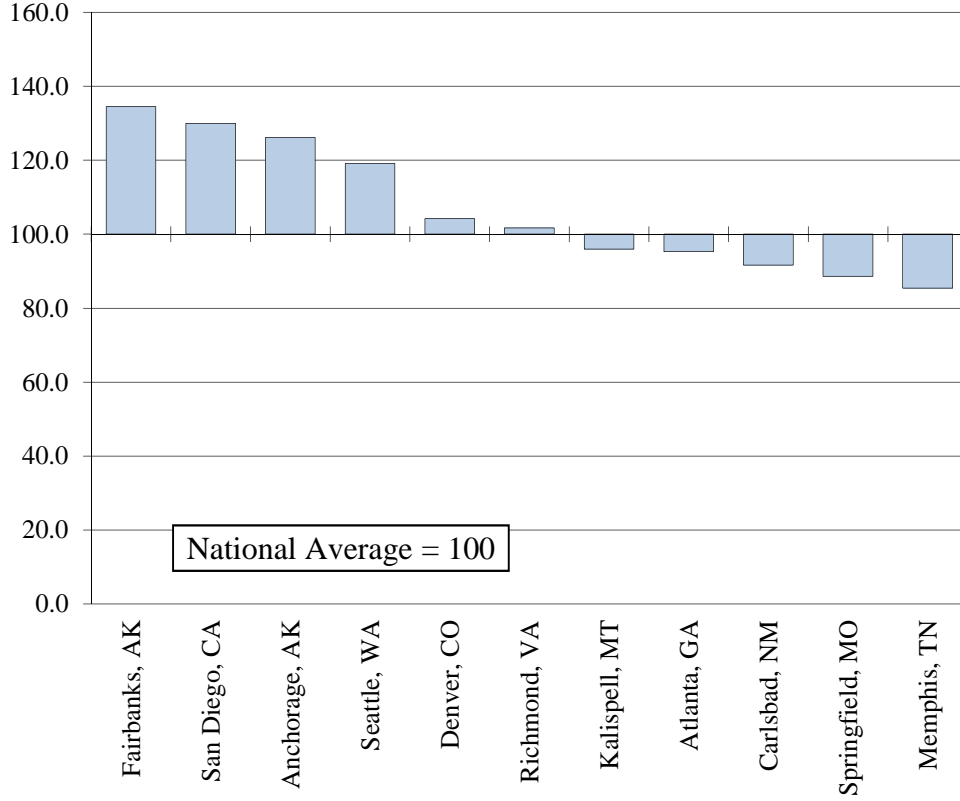
NOTE: This Cost of Living Index **does not measure inflation** (price change over time). Because each quarterly report is a separate comparison of prices at a single point in time, and because both the number and the mix of participants changes from one quarter to the next, **Index data from different quarters cannot be compared.** **The Index reflects cost differentials for professional and executive households in the top income quintile.** For inflation data contact the US Bureau of Labor Statistics (BLS) at www.bls.gov.

* Item percentages change so please watch for current percentages.

Cost of Living

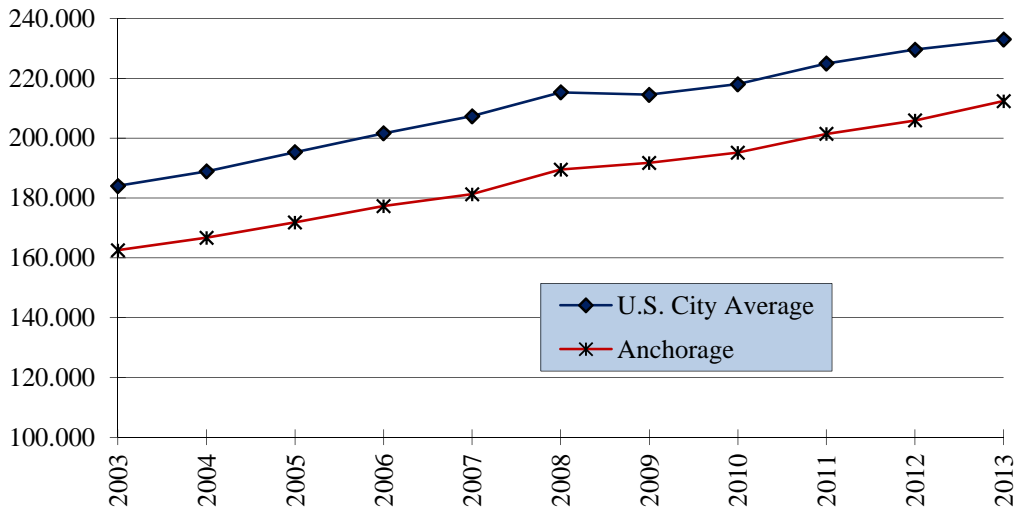
C2ER COST OF LIVING INDEX

For Selected Cities
2013 Annual Average Data



CONSUMER PRICE INDEX-U FOR ALL ITEMS

Anchorage & U.S. City Annual Average
2003-2013



Cost of Living

CONSUMER PRICE INDEX-U*^

Anchorage, Alaska
2008-2013

	2008	2009	2010	2011	2012	2013	% Change 2012-13
Jan. - June Average	187.659	190.032	194.834	200.278	205.215	210.853	2.7%
July - Dec. Average	191.335	193.456	195.455	202.576	206.617	213.910	3.5%
Annual Average	189.497	191.744	195.144	201.427	205.916	212.381	3.1%
% Change from Previous Year	5.6%	1.2%	1.8%	3.2%	2.2%	3.1%	

SOURCE: U.S. Department of Labor, Bureau of Labor Statistics, *Consumer Price Indexes Pacific Cities and U.S. City Average*, not seasonally adjusted, 2008-2013.

NOTE: 1982-1984 = 100

* For All Urban Consumers.

CONSUMER PRICE INDEX-U* FOR ALL ITEMS

U.S. City Average
2008-2013

	2008	2009	2010	2011	2012	2013	% Change 2012-13
January	211.080	211.143	216.687	220.223	226.665	230.280	1.6%
February	211.693	212.193	216.741	221.309	227.663	232.166	2.0%
March	213.528	212.709	217.631	223.467	229.392	232.773	1.5%
April	214.823	213.240	218.009	224.906	230.085	232.531	1.1%
May	216.632	213.856	218.178	225.964	229.815	232.945	1.4%
June	218.815	215.693	217.965	225.722	229.478	233.504	1.8%
July	219.964	215.351	218.011	225.922	229.104	233.596	2.0%
August	219.086	215.834	218.312	226.545	230.379	233.877	1.5%
September	218.783	215.969	218.439	226.889	231.407	234.149	1.2%
October	216.573	216.177	218.711	226.421	231.317	233.546	1.0%
November	212.425	216.330	218.803	226.230	230.221	233.069	1.2%
December	210.228	215.949	219.179	225.672	229.601	233.049	1.5%
Annual Average	215.303	214.537	218.056	224.939	229.594	232.957	1.5%
% Change from Previous Year	3.8%	-0.4%	1.6%	3.2%	2.1%	1.5%	

SOURCE: U.S. Department of Labor, Bureau of Labor Statistics, *Consumer Price Indexes Pacific Cities and U.S. City Average*, not seasonally adjusted, 2008-2013.

NOTE: 1982-1984=100; All items. 3rd Qtr. 2013 - federal government shutdown pushed back the release dates for data.

* For All Urban Consumers.

Cost of Living

COST OF FOOD AT HOME FOR A WEEK

Selected Alaskan Communities

June 2013

	Anchorage	Bethel	Cordova	Fairbanks	Kenai-Soldotna	Valdez
Family of 2						
19-50 years	\$98.60	\$201.83	\$148.98	\$100.23	\$101.01	\$129.28
51-70 years	\$93.58	\$191.56	\$141.40	\$95.13	\$95.87	\$122.70
Family of 4 with:						
Children, 2-5 years	\$143.56	\$293.86	\$216.92	\$145.94	\$147.08	\$188.24
Children, 6-11 years	\$164.56	\$336.85	\$248.65	\$167.29	\$168.59	\$215.77
Individuals						
Children:						
1 years	\$24.20	\$49.53	\$36.56	\$24.60	\$24.79	\$31.74
2-3 years	\$26.48	\$54.20	\$40.01	\$26.92	\$27.12	\$34.72
4-5 years	\$27.39	\$56.06	\$41.38	\$27.84	\$28.06	\$35.91
6-8 years	\$35.15	\$71.96	\$53.11	\$35.74	\$36.01	\$46.09
9-11 years	\$39.71	\$81.28	\$60.00	\$40.37	\$40.68	\$52.07
Males:						
12-13 years	\$42.91	\$87.83	\$64.83	\$43.62	\$43.96	\$56.26
14-18 years	\$44.28	\$90.63	\$66.90	\$45.01	\$45.36	\$58.06
19-50 years	\$47.48	\$97.18	\$71.74	\$48.26	\$48.64	\$62.25
51-70 years	\$43.37	\$88.77	\$65.63	\$44.09	\$44.43	\$56.86
71+ years	\$43.59	\$89.23	\$65.87	\$44.32	\$44.66	\$57.16
Females:						
12-13 years	\$42.91	\$87.83	\$64.83	\$43.62	\$43.96	\$56.26
14-18 years	\$42.22	\$86.43	\$63.80	\$42.92	\$43.26	\$55.36
19-50 years	\$42.22	\$86.43	\$63.80	\$42.92	\$43.26	\$55.36
51-70 years	\$41.65	\$85.26	\$62.93	\$42.34	\$42.67	\$54.61
71+ years	\$40.52	\$82.94	\$61.22	\$41.19	\$41.51	\$53.13

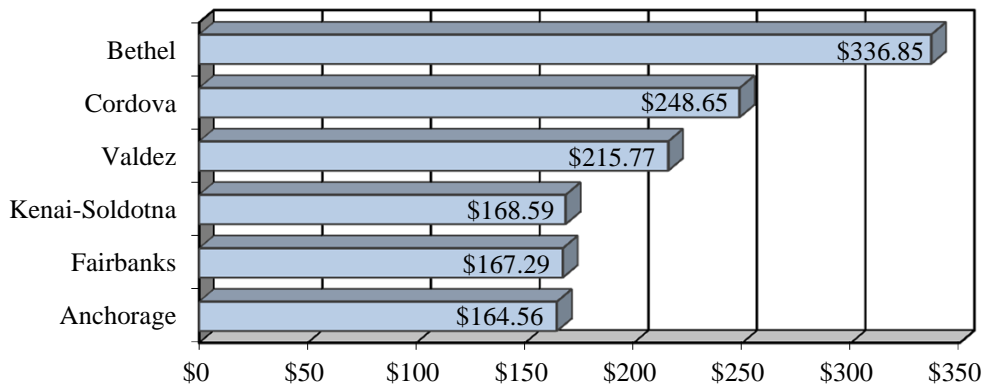
SOURCE: Alaska Cooperative Extension Service, UAF, "Cost of Food at Home for a Week," June 2013.

NOTE: There will be a 6 month lag in this report due to press timelines.

COST OF FOOD AT HOME FOR A WEEK FAMILY OF 4 WITH CHILDREN AGE 6-11 YEARS

Selected Alaskan Communities

June 2013



Cost of Living

AVERAGE SELF-SERVICE UNLEADED GASOLINE PRICES*

Fairbanks North Star Borough
2008-2013

	2008	2009	2010	2011	2012	2013	% chg 2012-13
January	\$3.189	\$2.539	\$3.279	\$3.629	\$3.919	\$3.779	-3.6%
February	\$3.279	\$2.599	\$3.349	\$3.699	\$3.999	\$3.939	-1.5%
March	\$3.469	\$2.559	\$3.349	\$3.919	\$4.309	\$4.179	-3.0%
April	\$3.579	\$2.559	\$3.499	\$4.109	\$4.449	\$4.169	-6.3%
May	\$3.999	\$2.679	\$3.499	\$4.229	\$4.579	\$4.169	-9.0%
June	\$4.359	\$2.859	\$3.499	\$4.179	\$4.369	\$4.189	-4.1%
July	\$4.599	\$3.159	\$3.529	\$4.039	\$4.049	\$4.159	2.7%
August	\$4.429	\$3.299	\$3.529	\$3.919	\$3.989	\$4.069	2.0%
September	\$4.339	\$3.349	\$3.529	\$3.919	\$4.069	\$3.999	-1.7%
October	\$3.599	\$3.479	\$3.529	\$4.019	\$4.209	\$3.889	-7.6%
November	\$2.689	\$3.369	\$3.559	\$4.059	\$4.019	\$3.769	-6.2%
December	\$2.539	\$3.329	\$3.559	\$3.979	\$3.829	\$3.719	-2.9%
Annual Average	\$3.672	\$2.982	\$3.476	\$3.975	\$4.149	\$3.749	-9.6%

SOURCE: Community Research Center gasoline price survey and personal communications with Totem Chevron on Gaffney Road in Fairbanks, Alaska, 2010-2013.

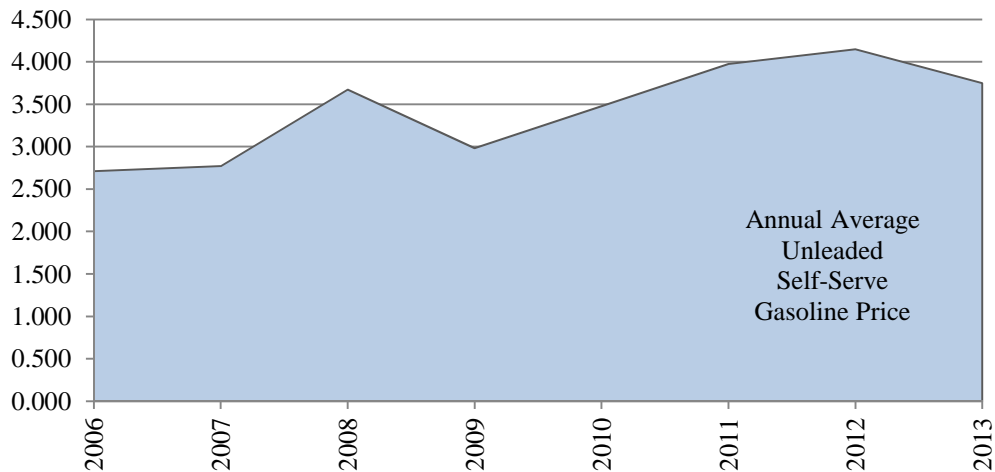
NOTE: Figures reflect prices at the self-serve pump for unleaded gasoline. Price is a monthly average of full months business. Only national gasoline retail chain outlets are surveyed.

Factors that may influence the price fluctuations include seasonality in the demand for gasoline, changes in the cost of crude oil, product supply/demand imbalances, proximity of supply, supply disruptions, competition in the local market, environmental programs, operating costs, and World oil supply/demand. Recent examples include the natural disaster named Hurricane Katrina (August 2005) which took out 25% of the US Crude oil production and 15% of the US refinery capacity. Some major pipelines were impacted by either shutdowns or reduced operating rates. The Deep Water Horizon Oil Spill in the Gulf of Mexico (April 2010). Other factors are political unrest such as the riots in the Middle East including Egypt, and Libya (January-April 2011). It is known that retail prices are likely to remain elevated as long as some refineries remain shut down and the U.S. gasoline market continues to stretch supplies to their limit.

* Beginning December 2010 this survey changed to monthly reporting.

ANNUAL AVERAGE SELF-SERVICE UNLEADED GASOLINE PRICES

Fairbanks North Star Borough
2006-2012



POPULATION & SOCIAL CONDITIONS

POPULATION COUNTS & ESTIMATES** Fairbanks, North Pole and the Fairbanks North Star Borough 2003-2013, Selected Years

			U.S. Census Bureau (1)	Ak. Department of Labor (2)*	Ak. Dept of Commerce (3)
F A I R B A N K S	2003	*	30,469	29,156	29,156
	2004	*	30,839	30,402	30,402
	2005	*	30,946	31,478	31,478
	2006	*	30,636	30,580	30,580
	2007	*	31,184	32,266	32,266
	2008	*	31,212	31,694	31,694
	2009	*	31,083	32,346	32,346
	2010	^	31,741	31,535	31,535
	2011	^	32,007	30,621	30,621
	2012	^	32,312	32,033	32,033
	2013	^	NA	32,204	32,204
N O R T H P O L E	2003	*	1,728	1,617	1,617
	2004	*	1,796	1,548	1,548
	2005	*	1,848	1,624	1,624
	2006	*	1,873	1,675	1,675
	2007	*	1,967	2,013	2,013
	2008	*	2,008	2,233	2,233
	2009	*	2,045	2,199	2,199
	2010	^	2,133	2,117	2,117
	2011	^	2,173	2,104	2,104
	2012	^	2,210	2,158	2,158
	2013	^	NA	2,209	2,209
F N S B	2003	*	86,885	83,714	84,979
	2004	*	89,043	87,555	87,608
	2005	*	90,431	90,381	96,888
	2006	*	90,545	90,953	96,888
	2007	*	93,545	95,354	97,970
	2008	*	94,552	96,423	98,660
	2009	*	95,238	96,631	97,581
	2010	^	98,267	97,581	97,581
	2011	^	99,286	97,909	97,909
	2012	^	100,272	100,320	100,320
	2013	^	NA	99,632	99,632

SOURCE: (1) U.S. Census Bureau, Population Division, July 1st estimates. 2012 Population Estimates. PEPANNRES Table: *Annual Estimates of the Resident Population for Counties of Alaska: April 1, 2010 to July 1, 2012*, also Table: *Annual Estimates of the Resident Population in Alaska: now known as *Intercensal Estimates of the Resident Population for Incorporated Places and Minor Civil Divisions: April 1, 2000 to July 1, 2012*, May 2013. Geographic change notes defined at: <http://www.census.gov>.

(2) Alaska Department of Labor and Workforce Development, Research and Analysis Section; and US Census Bureau. *Alaska Population Estimates by Borough, Census Area, City and Census Designated Place (CDP), 2010-2013*, Vintage 2013 ^, and *Alaska Population Estimates by Borough, Census Area, City and Census Designated Place (CDP), 2010-2013*, Vintage 2013 ^. All numbers are based on 2010 Census geography. ADOL website: <http://laborstats.alaska.gov>, February 2014.

(3) Alaska Department of Commerce, Community and Economic Development (DCCED), Division of Community and Regional Affairs, 2013 Commissioner Certified Estimates, January 15, 2013. DCCED Certified numbers may vary from ADOL population estimates as a result of the Population Estimate Appeal process available to incorporated communities on a yearly basis, as well as annual revisions by ADOL. Once certified, DCCED numbers may be applied for two consecutive calendar years. DCCED website: http://www.commerce.state.ak.us/dca/commdb/CF_COMDB.htm.

NOTE: The FNSB numbers include population for all communities within the Borough plus Fort Wainwright Army Base and Eielson Air Force Base.

** U.S. Census and ADOL estimated numbers may be revised annually.

Population and Social Conditions

MILITARY POPULATION

Ft. Wainwright Army Base*[^]

By Federal Fiscal Year Quarter: 2011-14

Ft. Wainwright Army Base	FFY Qtr.	FFY Months	Military Active Duty Personnel	Military Families	Total	% Change (same Qtr.) fr/prev/yr
2011	1	Oct-Dec	6,996	8,517	15,513	5.1%
	2	Jan-Mar	7,358	8,858	16,216	17.7%
	3	Apr-Jun	7,549	9,097	16,646	12.1%
	4	Jul-Sept	7,736	9,097	16,833	14.2%
2012	1	Oct-Dec	7,453	9,097	16,550	6.7%
	2	Jan-Mar	7,278	9,009	16,287	0.4%
	3	Apr-Jun	6,379	10,152	16,531	-0.7%
	4	Jul-Sept	6,441	9,998	16,439	-2.3%
2013	1	Oct-Dec	6,132	9,157	15,289	-7.6%
	2	Jan-Mar	6,164	8,863	15,027	-7.7%
	3	Apr-Jun	6,568	9,082	15,650	-5.3%
	4	Jul-Sept	6,475	9,038	15,513	-5.6%
2014	1	Oct-Dec	6,142	8,628	14,770	-3.4%

SOURCE: Fort Wainwright Army Base (FWA), Plans, Analysis and Integration Office (PAIO), and ALCOM, Alaskan Command, 2011-2014.

NOTE: June 2009 ALCOM used the military Defense Enrollment Eligibility Reporting System (DEERS) which uses the military definition of a "dependent" associated with the uniformed services members (sponsors). Since these DEERS persons may be anywhere in the country, it grossly inflates the number of dependents at the Alaska base. Using Federal Fiscal Year (FFY) reporting periods: FFY1Q: Oct-Dec; FFY2Q: Jan-Mar; FFY3Q: Apr-Jun; FFY4Q: Jul-Sept. 3rd Qtr. 2013 - federal government shutdown pushed back the release dates for data.

[^] Prior to deployment a build up of replacements occurs.

* Does not include contract civilian positions or BLM.

MILITARY POPULATION

Eielson Air Force Base*

By Federal Fiscal Year Quarter: 2011-2014

Eielson Air Force Base	FFY Qtr.	FFY Months	Military Active Duty Personnel	Military Families	Total	% Change (same Qtr.) fr/prev/yr
2011	1	Oct-Dec	1,909	2,974	4,883	-1.1%
	2	Jan-Mar	1,912	2,998	4,910	-0.2%
	3	Apr-Jun	1,914	3,022	4,936	-2.2%
	4	Jul-Sept	1,887	2,954	4,841	0.5%
2012	1	Oct-Dec	1,893	2,953	4,846	-0.8%
	2	Jan-Mar	1,893	2,953	4,846	-1.3%
	3	Apr-Jun	1,918	2,939	4,857	-1.6%
	4	Jul-Sept	1,931	2,866	4,797	-0.9%
2013	1	Oct-Dec	1,900	2,846	4,746	-2.1%
	2	Jan-Mar	1,873	2,832	4,705	-2.9%
	3	Apr-Jun	1,883	2,900	4,783	-1.5%
	4	Jul-Sept	1,866	2,840	4,706	-1.9%
2014	1	Oct-Dec	1,862	2,815	4,677	-1.5%

SOURCE: ALCOM, Alaskan Command, 2011-2014.

NOTE: June 2009 ALCOM used the military Defense Enrollment Eligibility Reporting System (DEERS) which uses the military definition of a "dependent" associated with the uniformed services members (sponsors). Since these DEERS persons may be anywhere in the country, it grossly inflates the number of dependents at the Alaska base. Using Federal Fiscal Year (FFY) reporting periods: FFY1Q: Oct-Dec; FFY2Q: Jan-Mar; FFY3Q: Apr-Jun; FFY4Q: Jul-Sept. 3rd Qtr. 2013 - federal government shutdown pushed back the release dates for data.

* Does not include contract civilian positions or BLM.

Population and Social Conditions

VITAL STATISTICS[^]

Fairbanks North Star Borough
1993-2012

Year	Births	Deaths	Marriages	Divorces*	Adoptions
1993	1,631	311	885	693	110
1994	1,536	304	901	638	87
1995	1,490	291	856	593	107
1996	1,462	298	804	556	84
1997	1,424	310	778	600	103
1998	1,439	290	735	677	88
1999	1,415	335	817	593	118
2000	1,537	329	806	475	114
2001	1,488	367	806	558	104
2002	1,515	283	831	541	109
2003	1,564	355	779	525	88
2004	1,591	388	854	531	76
2005	1,557	338	897	559	63
2006	1,568	363	805	475	75
2007	1,725	387	1123	622	59
2008	1,881	362	995	614	92
2009	1,557	421	800	614	74
2010	1,764	393	992	735	74
2011	1,679	424	878	718	79
2012	1,449	456	940	670	NA
% Chg. 2011-12	-14%	8%	7%	-7%	NA

SOURCE: Alaska Department of Health and Social Services, Division of Public Health, Vital Statistics Section, Annual Reports 1993-2003, and personal communications, 1993-2013.

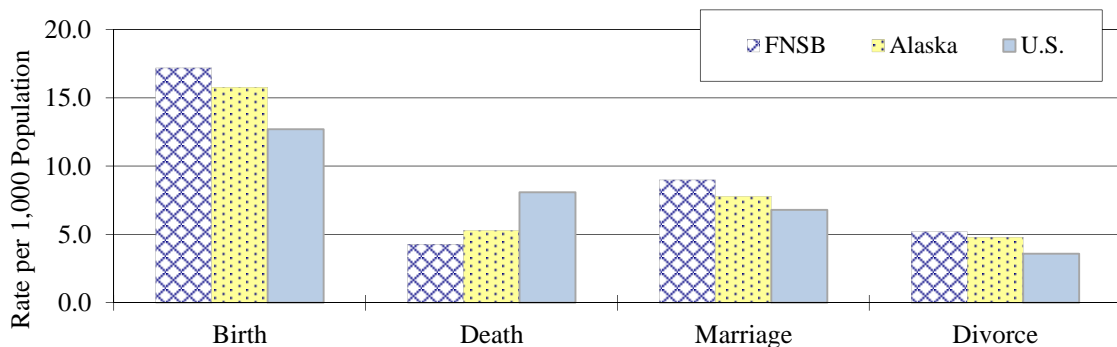
NOTE: Births & deaths are counted by place of residence. Marriages & adoptions are counted by place of occurrence of the event, and Divorces are for the 4th Judicial District. Adoption rate for 2012 was not available at press time.

* Includes dissolutions & annulments for the 4th Judicial District.

[^] Current data supersedes previously report figures.

BIRTH, DEATH, MARRIAGE & DIVORCE RATES

FNSB, Alaska & the United States
2011



Population and Social Conditions

BIRTH, DEATH, MARRIAGE & DIVORCE RATES[^]

Fairbanks North Star Borough, Alaska & the United States

2003-2012

Year	Births	Deaths	Marriages	Divorces*	
	2003	18.7	4.2	9.3	4.3
	2004	18.2	4.4	9.8	4.2
	2005	17.2	3.7	9.9	4.3
F	2006	17.2	4.0	8.9	3.7
N	2007	18.1	4.1	11.8	4.7
S	2008	19.5	3.8	10.3	4.6
B	2009	16.1	4.4	8.3	4.6
	2010	18.1	4.0	10.2	5.4
	2011	17.2	4.3	9.0	5.2
	2012	14.4	4.5	9.4	4.7
	2003	15.5	4.9	8.1	4.5
	2004	15.7	4.6	8.5	4.5
A	2005	15.7	4.7	8.2	4.4
L	2006	16.3	5.0	8.2	4.3
A	2007	16.2	5.1	8.6	4.5
S	2008	16.6	5.1	8.4	4.6
K	2009	16.2	5.2	7.8	4.6
A	2010	16.1	5.3	8.0	4.8
	2011	15.8	5.3	7.8	4.8
	2012	14.4	5.3	7.3	4.6
	2003	14.1	8.4	7.4	3.7
	2004	14.0	8.3	7.7	3.9
	2005	14.0	8.1	7.8	3.8
	2006	14.3	8.1	7.4	3.7
U	2007	14.3	8.0	7.3	3.6
S	2008	14.0	8.0	7.1	3.5
A	2009	13.5	7.9	6.8	3.4
	2010	13.0	7.9	6.8	3.6
	2011	12.7	8.1	6.8	3.6
	2012	12.6	NA	NA	NA

SOURCE: Alaska Dept. of Health and Social Services, Division of Public Health, Vital Statistics Section, Alaska Vital Statistics, personal communications, 2003-2013. U.S. Dept. of Commerce, Bureau of Census, Statistical Abstract of the United States 2004-2006. National Center for Health Statistics: www.cdc.gov/nchs, 2010.

NOTE: Rates are the number per 1,000 population. Births and deaths are counted by place of residence. Marriages, divorces and adoptions are counted by the place of occurrence of the event. 2011 data not available at press time.

* Includes dissolution's and annulments. The data listed for the FNSB are for the Alaskan 4th Judicial District.

NA Not available.

[^] Preliminary figures and may be subject to revision.

Population and Social Conditions

COLLEGE DEGREES AWARDED*

University of Alaska Fairbanks
1994-95 to 2012-13

Academic Year	Occupational Endorsements	Certificates	Associate's	Bachelor's	Teacher Licensure	Master's	Doctorate	Total
1994-95	-	94	129	482	-	178	19	902
1995-96	-	74	130	512	-	184	28	928
1996-97	-	90	136	586	-	182	20	1,014
1997-98	-	123	179	552	-	167	34	1,055
1998-99	-	77	196	497	-	117	27	914
1999-00	-	115	190	445	-	169	20	939
2000-01	-	104	216	448	-	125	27	920
2001-02	-	98	243	431	-	142	19	933
2002-03	-	78	246	395	-	163	36	918
2003-04	-	117	240	411	-	183	20	971
2004-05	-	91	223	432	-	236	25	1,007
2005-06	-	124	237	483	34	183	21	1,082
2006-07	-	169	210	464	34	199	33	1,109
2007-08	-	190	238	444	30	199	29	1,130
2008-09	26	109	193	483	30	169	37	1,047
2009-10	66	165	204	473	34	219	45	1,206
2010-11	54	98	233	523	35	199	46	1,188
2011-12	59	179	226	535	30	245	50	1,324
2012-13	80	162	283	550	37	213	52	1,377
% Change '11-12 to '12-13	36%	-9%	25%	3%	23%	-13%	4%	4%

SOURCE: University of Alaska Fairbanks, Office of Planning, Analysis and Institutional Research, Fairbanks, Alaska, personal communications, 1994-2013.

NOTE: The academic year runs from summer through spring. Beginning FY08 the UAF awards occupational endorsements, which is a non-degree award similar to a certificate, but requiring fewer credits to complete. UAF also recognizes its students who have earned the university's recommendation for teacher licensure.

* Current data supersedes previous figures reported.

OPENING FALL SEMESTER HEADCOUNTS FOR CREDIT ENROLLMENT*

University of Alaska - Fairbanks and Alaska
2007-2013

Fall Semester	2007	2008	2009	2010	2011	2012	2013	% chg 2012-13
Fairbanks Campus	13,271	4,976	5,271	5,504	5,665	5,369	6,279	16.9%
UAF System	8,627	8,579	9,137	9,855	9,818	9,314	9,256	-0.6%
UA System	28,348	28,211	29,447	30,998	31,301	29,866	29,510	-1.2%

SOURCE: University of Alaska Fairbanks, Office of Planning, Analysis and Institutional Research, personal communications, 2007-2013.

NOTE: Opening headcounts are taken near the end of the second week of classes. Because most campuses offer credit courses beginning after this period, opening counts are generally lower than closing counts taken at the end of the semester.

* Current data supersedes previous figures reported.

Population and Social Conditions

FALL PUBLIC SCHOOL ENROLLMENTS

Fairbanks North Star Borough
2007-2013

School	2007	2008	2009	2010	2011	2012	2013	% Chg 2012-13
In-Town Enrollments								
Alternative Schools	75	106	113	110	116	137	131	-4.4%
Anne Wien Elem.	470	432	398	372	386	401	412	2.7%
Badger Road Elem.	591	564	549	593	515	505	497	-1.6%
Barnette Elem.	379	393	404	409	404	412	415	0.7%
Chinook Charter Elem.	155	153	153	152	156	153	150	-2.0%
Denali Elem.	379	394	370	376	366	398	402	1.0%
Effie Kokrine Charter FYF	155 28	141 20	155 14	153 17	153 20	152 17	167 10	9.9% -41.2%
Hunter Elem.	313	320	352	388	392	353	353	0.0%
Hutchison High	349	362	358	363	362	372	362	-2.7%
Joy Elem.	355	369	384	379	424	444	464	4.5%
Lathrop High	1,146	1,185	1,199	1,125	1,184	1,101	1,073	-2.5%
Nordale Elem.	365	397	334	343	343	360	317	-11.9%
North Pole Elem.	531	533	532	483	413	453	459	1.3%
North Pole Middle	509	599	634	585	652	679	656	-3.4%
North Pole Sr. High	834	823	814	781	721	730	753	3.2%
Pearl Creek Elem.	410	406	444	480	484	470	478	1.7%
Randy Smith Middle	408	366	335	293	313	326	338	3.7%
Ryan Middle School	391	361	375	389	396	394	385	-2.3%
Salcha Elem.	87	98	101	88	83	84	75	-10.7%
Star of the North Charter	187	201	201	194	196	196	194	-1.0%
Tanana Middle	467	503	523	514	501	513	472	-8.0%
Ticasak Brown Elem.	501	517	553	548	511	545	514	-5.7%
Two Rivers Elem.	109	99	92	92	88	87	98	12.6%
University Park Elem.	515	490	460	473	526	529	503	-4.9%
WaterShed Charter	--	--	173	188	195	196	202	3.1%
Weller Elem.	489	502	519	541	541	484	477	-1.4%
West Valley High	1,190	1,095	1,081	1,071	1,035	1,019	966	-5.2%
Woodriver Elem.	443	441	413	446	436	445	438	-1.6%
Subtotal	11,831	11,870	12,033	11,946	11,912	11,955	11,761	-1.6%
On-Base Enrollments								
Anderson Elem.	294	310	328	329	283	269	253	-5.9%
Arctic Light Elem.	533	533	524	476	570	569	530	-6.9%
Ben Eielson Jr/Sr High	547	513	474	473	437	403	399	-1.0%
Crawford Elem.	309	281	306	292	296	300	298	-0.7%
Ladd Elem.	305	381	542	499	495	499	540	8.2%
Subtotal	1,988	2,018	2,174	2,069	2,081	2,040	2,020	-1.0%
BEST Correspondence	284	252	195	211	274	269	269	0.0%
Total	14,103	14,140	14,402	14,226	14,267	14,264	14,050	-1.5%

SOURCE: FNSB School District, Attendance Office, "FTE October 20-school-Day ADM Count.", personal communications 2007-2013.

NOTE: Watershed Charter opened in 2009. BEST Correspondence aka Correspondence Study changed names in 2010.

Population and Social Conditions

PRIVATE SCHOOL ENROLLMENTS[^]

Fairbanks North Star Borough
2007-2013

Private School	Grade Range	2007	2008	2009	2010	2011	2012	2013
Bible Baptist Church	Pre-12*	40	30	15	--	--	--	--
Bright Beginnings Learning Ctr	Pre-K	75	80	76	76	70	85	72
Fairbanks Montessori	Pre-K	96	97	101	96	90	101	95
Fairhill Community Christian	Pre-12*	205	146	162	163	93	96	80
Far North Christian	Pre-12*	72	70	64	45	51	58	55
Frontier High School	9-12	9	10	6	--	--	--	--
Golden Heart Christian	Pre-12*	12	24	39	32	32	19	18
Hamilton Acres Baptist	Pre-8*	73	80	65	57	65	41	49
Immaculate Conception	Pre-6**	262	266	270	266	282	245	238
Monroe Jr./Sr. High School	7-12**	189	212	217	204	202	186	186
North Pole Christian	Pre-12	115	83	87	95	104	104	119
Total		1,148	1,098	1,102	1,034	989	935	912

SOURCE: Community Research Center Survey, 2007-2013.

NOTE: Bright Beginnings and Montessori schools added to survey January 2007.

* In 2007-2008 school year the school(s) expanded their classrooms structures to include Pre-school and extend to 12th grade.

** In 2007, Immaculate Conception (IC) includes Pre-6 and Monroe 7-12.

-- School has closed.

[^] Current data supersedes previous figures.

ALASKA STATEWIDE CORRESPONDENCE SCHOOLS*

Fairbanks North Star Borough
2007-2013

Correspondence School	Grade Range	2007	2008	2009	2010	2011	2012	2013
Alaska Gateway REACH Acad.	K-12	--	--	--	--	--	--	1
Alaska Virtual Acad.-Wrangell	K-8	--	--	--	--	9	0	12
Chugach Extension	P-12	55	57	48	67	79	80	97
Copper River	K-12	2	0	--	--	--	--	--
CyberLynx Program	P-12	108	125	129	157	136	156	138
Delta Cyber Charter School	K-12	26	36	11	1	0	--	--
Denali PEAK Program	K-12	4	4	1	2	0	2	5
Interior Distance Education of AK	P-12	682	728	765	727	759	742	748
Iditarod Distance Learning	K-12	--	--	--	--	--	--	10
PACE -Craig City	K-12	5	4	15	12	9	3	2
Raven School	K-12	300	267	250	225	224	271	270
Total		1,181	1,221	1,218	1,192	1,216	1,254	1,283

SOURCE: Alaska Department of Education & Early Development, Foundation Program Administrator, "Alaska Statewide Correspondence School Enrollments, FNSB School District, Attendance Office, "FTE October 20-school-Day ADM Count or ^October Count Period-Head Count (when ADM not available)", Juneau, Alaska, personal communication, 2007-2013.

NOTE: The addition of the statewide correspondence school (SCS) enrollment will provide a clearer picture of students in the FNSB, albeit, they are living here and attending SCS. Full Time Equivalent (FTE) numbers have been rounded to the nearest whole number.

-- School has closed.

* Current data supersedes previous figures.

Population and Social Conditions

ALCOHOLIC BEVERAGES DISTRIBUTED OR SOLD *

Fourth Judicial District

2007-2012

Month	2007	2008	2009	2010	2011	2012
LIQUOR						
January	20,716	28,029	29,146	22,113	18,057	21,085
February	15,059	13,238	10,341	14,743	5,779	14,405
March	13,520	8,107	14,549	15,382	7,034	16,336
April	16,417	14,353	17,578	18,468	46,246	18,709
May	13,307	17,214	7,510	19,123	18,161	19,283
June	21,624	18,239	30,839	20,151	22,982	23,116
July	20,958	24,440	22,425	22,228	23,456	22,560
August	14,839	16,560	22,512	21,560	20,475	19,393
September	2,388	26,454	22,153	20,818	21,895	23,530
October	14,755	9,138	20,292	11,890	21,946	20,111
November	16,112	15,163	19,743	10,617	18,012	18,766
December	17,184	12,604	18,263	26,576	19,048	18,566
TOTAL	186,879	203,539	235,351	223,669	243,091	235,860
WINE						
January	26,574	41,276	46,418	27,391	29,416	28,410
February	25,248	16,947	11,530	18,336	10,636	19,742
March	17,234	15,998	20,317	19,700	13,362	25,082
April	22,257	21,480	29,074	23,300	48,699	23,575
May	13,596	20,228	11,905	24,652	23,330	21,781
June	33,289	22,834	37,350	21,488	27,457	29,341
July	26,609	31,027	32,111	34,013	31,773	28,257
August	16,696	27,747	26,542	27,344	28,295	28,403
September	9,709	37,648	24,796	25,595	28,997	30,125
October	21,235	14,979	24,802	10,257	24,873	27,272
November	18,427	17,311	25,696	10,037	23,704	22,612
December	23,470	15,854	21,348	40,945	28,878	27,664
TOTAL	254,344	283,329	311,889	283,058	319,420	312,264
BEER**						
January	181,020	295,460	351,042	195,082	176,442	162,504
February	203,973	153,994	90,925	137,537	126,644	129,229
March	148,205	108,834	135,297	147,958	116,518	147,163
April	168,007	155,462	194,245	173,684	248,358	158,181
May	121,660	182,071	87,574	204,881	174,511	169,075
June	304,248	233,579	338,872	227,098	233,997	248,067
July	251,366	246,353	257,032	267,300	260,080	231,054
August	163,488	235,773	275,503	255,965	230,576	235,787
September	237,103	271,041	214,545	235,608	236,685	247,469
October	198,377	113,958	235,254	241,996	221,790	190,495
November	141,321	114,949	181,587	170,115	143,507	175,606
December	180,063	94,363	170,543	158,405	162,318	225,345
TOTAL	2,298,831	2,205,837	2,532,419	2,415,629	2,331,426	2,319,975

SOURCE: Alaska Department of Revenue, *Report of Alcoholic Beverages Distributed or Sold*, 2006-2012.

The 4th Judicial District includes Fairbanks, Bethel, Delta Jct., Ft. Yukon, Galena, Healy, Nenana, Rampart, Tanana & Tok. 2013 data not available at press time.

* Beginning in 2003, qualifying beer includes the category malt beverage in its total.

Population and Social Conditions

ANNUAL ALCOHOLIC BEVERAGES DISTRIBUTED OR SOLD

Fourth Judicial District
1977-2012

Year	-----IN GALLONS-----			Total Gallons	% Change fr/prev Yr.
	Liquor	Wine	Beer		
1977	228,820	170,305	2,018,415	2,417,540	*
1978	200,688	161,508	1,839,315	2,201,511	-8.9%
1979	181,514	151,855	1,808,381	2,141,750	-2.7%
1980	202,099	165,259	1,987,710	2,355,068	10.0%
1981	224,084	187,968	2,178,041	2,590,093	10.0%
1982	238,162	192,634	2,225,209	2,656,005	2.5%
1983	238,056	206,550	2,437,909	2,882,515	8.5%
1984	224,666	228,067	2,414,750	2,867,483	-0.5%
1985	211,861	222,148	2,385,227	2,819,236	-1.7%
1986	166,064	198,852	2,187,939	2,552,855	-9.4%
1987	165,766	195,227	2,157,696	2,518,689	-1.3%
1988	156,158	169,387	2,060,926	2,386,471	-5.2%
1989	153,093	158,816	1,843,109	2,155,018	-9.7%
1990	157,740	168,780	2,040,133	2,366,653	9.8%
1991	160,334	160,079	2,072,898	2,393,311	1.1%
1992	156,997	169,307	2,155,268	2,481,572	3.7%
1993*	147,971	140,573	1,971,294	2,259,838	-8.9%
1994	174,206	172,048	2,239,190	2,585,444	14.4%
1995	157,502	169,369	2,163,870	2,490,741	-3.7%
1996	156,754	186,899	2,124,892	2,468,545	-0.9%
1997	153,440	175,481	2,123,419	2,452,340	-0.7%
1998	161,313	182,293	2,256,574	2,600,180	6.0%
1999	163,599	188,063	2,397,989	2,749,651	5.7%
2000#	165,256	189,689	2,381,779	2,736,724	-0.5%
2001	169,696	201,823	2,300,564	2,672,083	-2.4%
2002	186,477	220,965	2,375,380	2,782,822	4.1%
2003	159,510	218,309	2,263,094	2,640,913	-5.1%
2004	179,574	228,859	2,363,897	2,772,330	5.0%
2005	189,249	237,384	2,322,680	2,749,313	-0.8%
2006	193,641	254,251	2,297,600	2,745,492	-0.1%
2007	186,879	254,344	2,298,831	2,740,054	-0.2%
2008	203,539	283,329	2,205,837	2,692,705	-1.7%
2009	235,351	311,889	2,532,419	3,079,659	14.4%
2010	223,669	283,058	2,415,629	2,922,356	-5.1%
2011	243,091	319,420	2,331,426	2,893,937	-1.0%
2012	235,860	312,264	2,319,975	2,868,099	-1.9%
10 Yr/Avg	205,036	270,311	2,335,139	2,810,486	

SOURCE: Alaska Department of Revenue, Report of Alcoholic Beverages Distributed or Sold, 1977-2012.

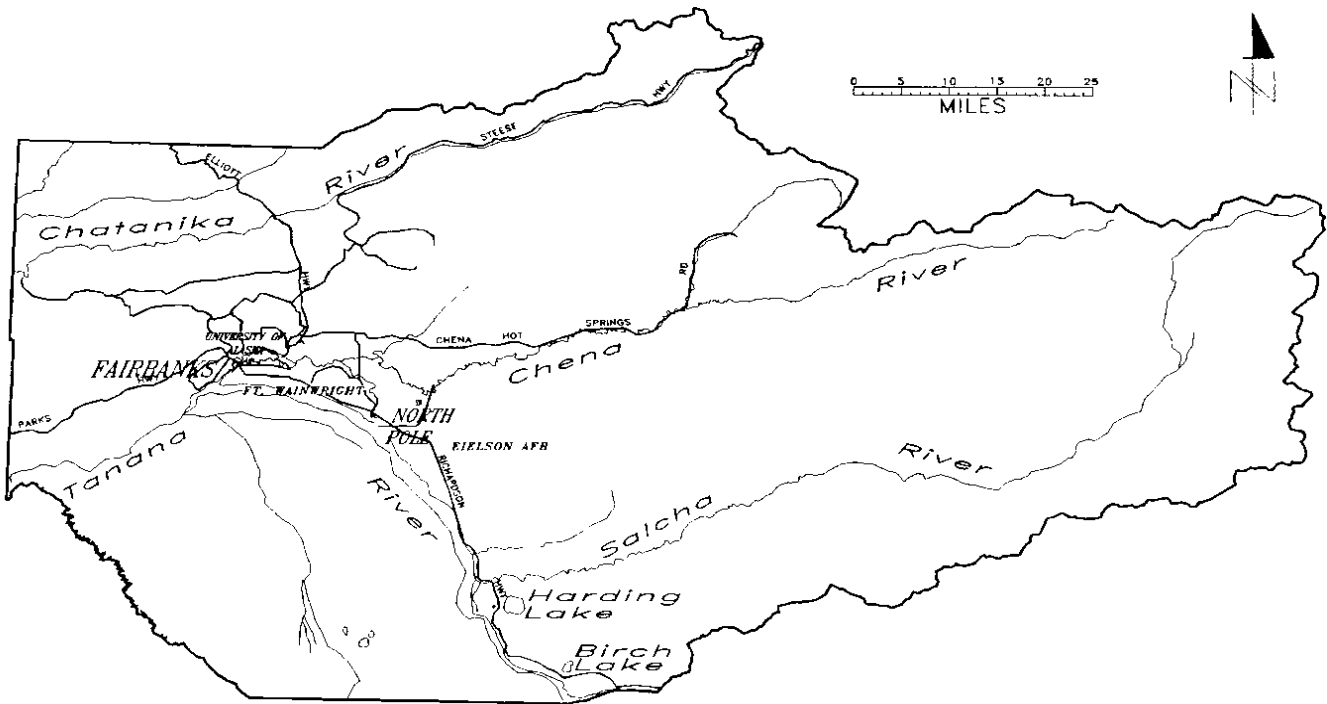
NOTE: The 4th Judicial District includes Fairbanks, Bethel, Delta Jct., Ft. Yukon, Galena, Healy, Nenana, Rampart, Tanana and Tok. 2013 data not available at press time.

* Information not available.

** Beginning in 2003, qualifying beer includes the category malt beverage in its total.

1993 totals revised January 1998. 2000 totals revised July 2001.

FNSB VICINITY MAP



Date of Incorporation: January 1, 1964

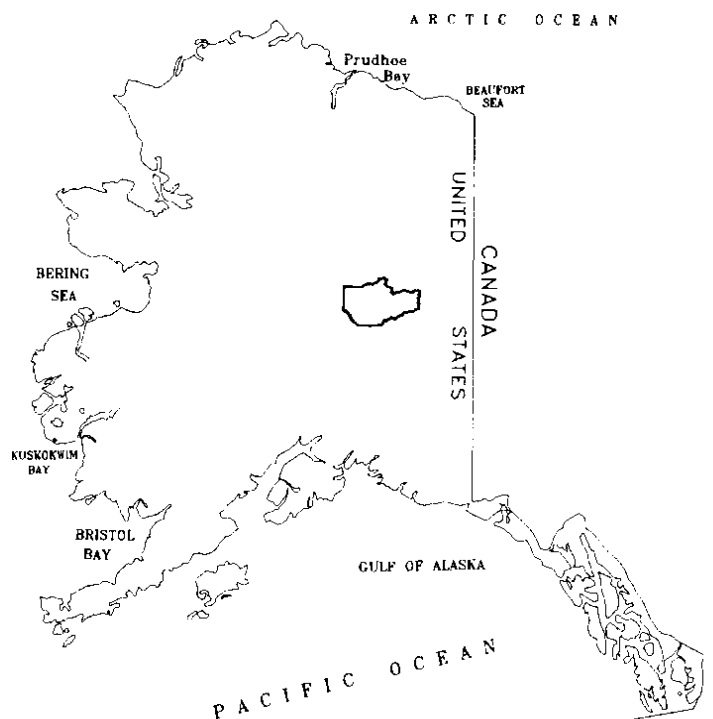
Form of Government: Second Class Borough

Type of Government: Borough Mayor, 3 yr. Term
Assembly, 9 Members
Elected at large, 3 yr. Terms

Population (2013) Alaska: 100,343

Size: 7,361 square miles
19,065 square kilometers

Certified Assessed Valuation (2013): \$8,100,556,328 (non-pipeline)
\$ 947,537,770 (pipeline)



Fairbanks North Star Borough
Community Research Center
PO Box 71267
Fairbanks, AK 99707-1267

TO: