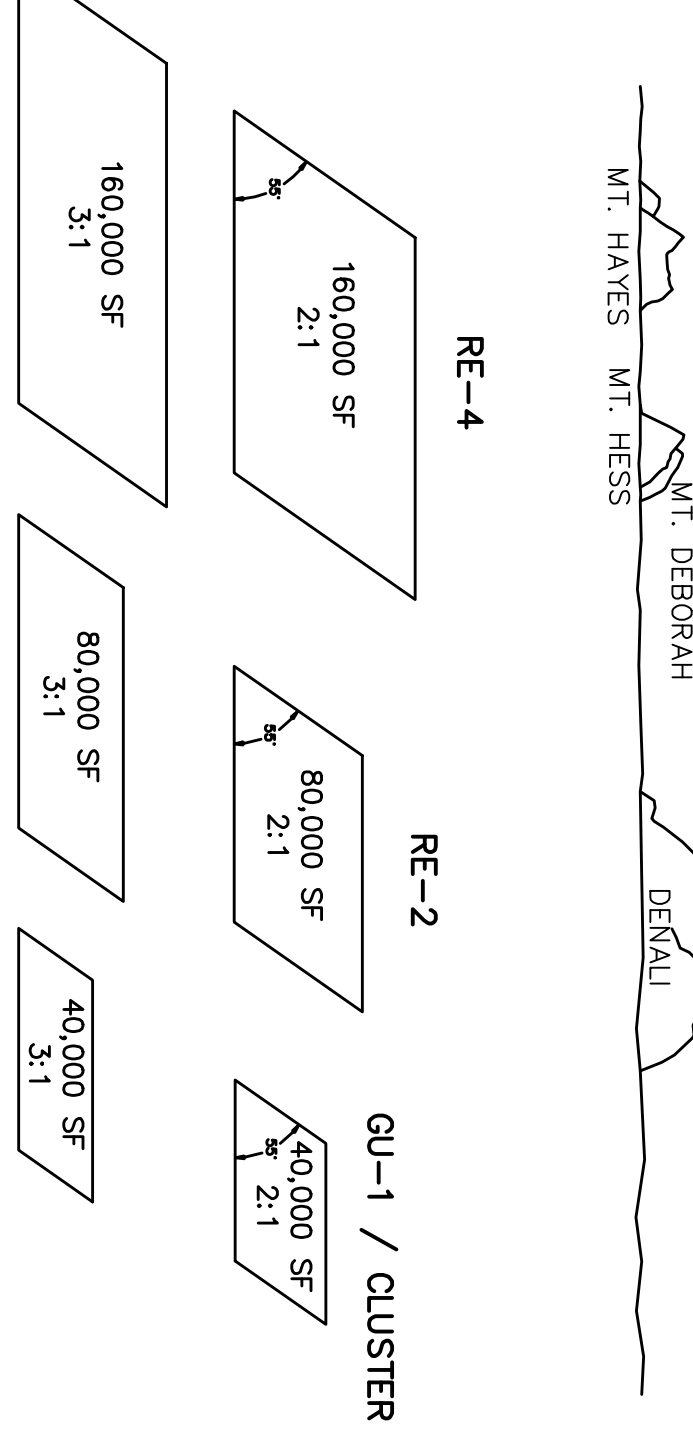
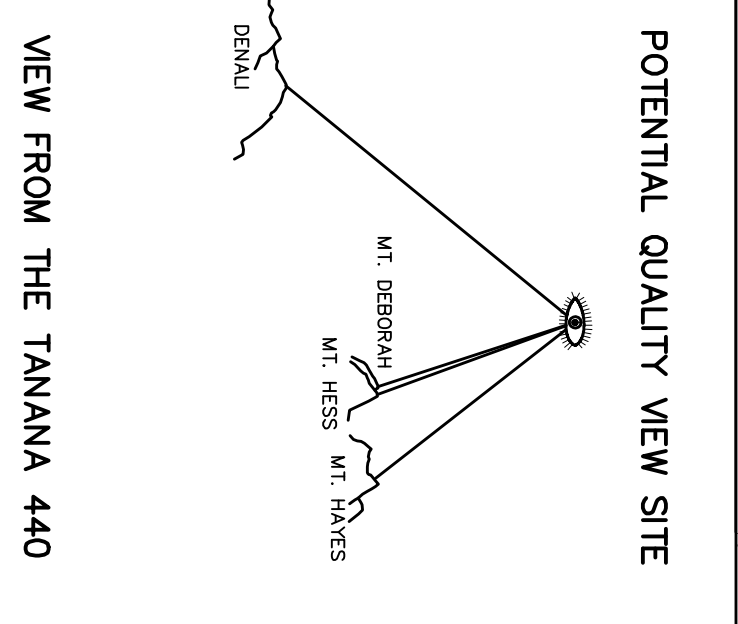
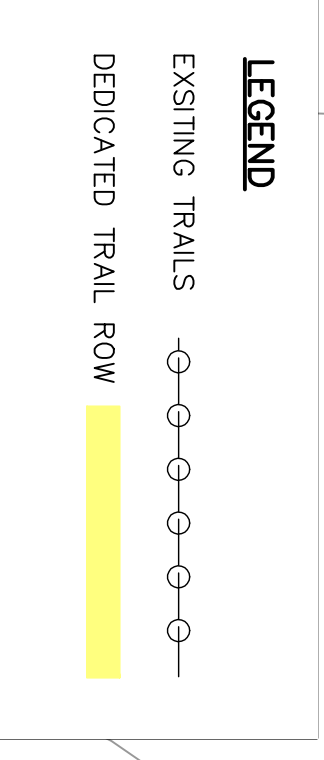


MASTER PLAN C
 TITLE 17, RE 4 DENSITY
 VACATION, REZONE AND
 VARIANCES PROPOSED
 PUBLIC TRAILS/PARKS
 118 RESIDENTIAL LOTS
 5.9 MILES OF ROAD

- NOTES**
1. PERMITTED USE IN OPEN SPACE BUFFER (OSB) ZONING IS LIMITED TO TRAIL MAINTENANCE LESS THAN 10 FEET IN WIDTH. CONDITIONAL USES INCLUDE CLEARING FOR ROADS, DRIVEWAYS AND UTILITIES, GARDENS, LAWNS AND LANDSCAPING AND THE CONSTRUCTION OF TRAILS AND FENCING. (SEE TITLE 18.11 FOR FURTHER DETAILS)
 2. OUTDOOR RECREATION (OR) PERMITTED USES INCLUDE ACCESSORY USES, DOGS, DECKS, BOAT LAUNCHES, CAMPGROUNDS, CORRALS, SKI FACILITIES, GOLF COURSES, OUTDOOR ICE RINKS, NATURE CENTERS, PLAY FIELDS, PLAYGROUNDS, AND RECREATIONAL OPEN SPACE. CONDITIONAL USES INCLUDE ORGANIZED TRAIL FACILITIES AS A PRIMARY USE, DOMESTIC LIVESTOCK, PUBLIC RECREATION BUILDINGS AND COMMUNITY CENTERS, TRAVEL TRAILER PARKS, SHOOTING AND ARCHERY RANGES. (SEE TITLE 18.10 FOR FURTHER DETAILS)



NOT TO SCALE

KALEN & ASSOCIATES, INC.
 1041 CHENA RIDGE ROAD
 FAIRBANKS, ALASKA 99709
 (907) 479-2628

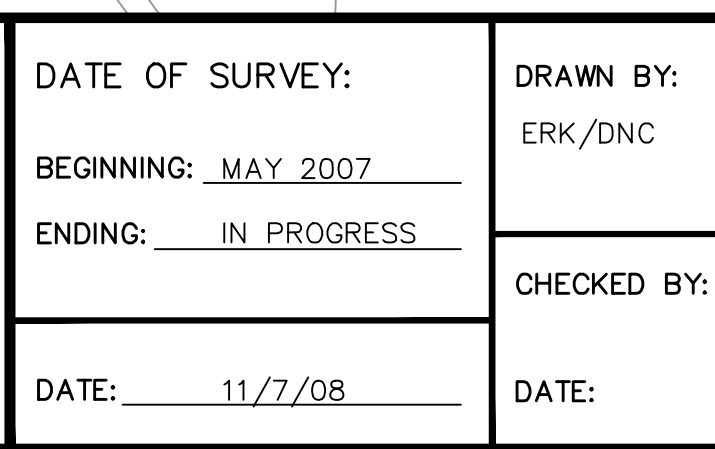
TANANA 440
 MASTER PLAN C
 MULTIPLE REZONE

OWNER: FNSB

DATE OF SURVEY:
 BEGINNING: MAY 2007
 ENDING: IN PROGRESS
 DATE: 11/7/08

DRAWN BY:
 ERK/DNC
 CHECKED BY:
 DATE:

FILE NO.:
 2007010
 FIELDBOOK:
 SHEET NO.:
 1 OF 1



KALEN & ASSOCIATES, INC.